



**CITY OF MANHATTAN BEACH
CULTURAL ARTS COMMISSION**

**February 11, 2014
Manhattan Beach City Hall
City Council Chambers
1400 Highland Avenue
Manhattan Beach, CA 90266
6:00 PM**

A G E N D A

- A. CALL TO ORDER**
- B. ROLL CALL**
Chairperson James Gill
Vice Chairperson Nancy Dunn
Commissioner Russ Samuels
Commissioner Loli Ramezani
Commissioner Peter De Maria
- C. APPROVAL OF MINUTES**
None
- D. CEREMONIAL**
- E. AUDIENCE PARTICIPATION (3-Minute Limit)**
The public may address the Commission regarding City business not on the agenda
- F. CULTURAL ARTS MANAGER REPORT**
- G. CULTURAL ARTS COMMISSIONER ANNOUNCEMENTS**
- H. GENERAL BUSINESS**
13/0813.4 Strand Bench Program
- I. COMMISSION ITEMS**
- J. ADJOURNMENT**

TO:

Members of the Cultural Arts Commission

FROM:

Gina Allen, Recreation Services Manager

SUBJECT:

New Architectural Bench Design Proposal for the Strand Alcove Bench Program

RECOMMENDATION:

Staff recommends that the Commission discuss and provide recommendations to the City Council for the architectural bench design proposals for the Strand Alcove Bench Program's pre-approved bench catalog:

1. *The Loop* by Sparano + Mooney Architecture
2. *Wave II* by Stacy Dukes Design
3. *Puddle* by Ball & Nogues Studio

FISCAL IMPLICATIONS:

There are no fiscal implications on the General Fund associated with the recommended action. The program will be supported through private purchase.

DISCUSSION:

The Cultural Arts Commission will be reviewing its recommendations to City Council of the following design proposals:

1. *The Loop* by Sparano + Mooney Architecture (attachment 1)

The project will be fabricated using cooper and a hydroforming process which uses the pressure of water to create unique balloon-like shapes in stainless steel. An industrial process used throughout Southern California to make high-end components, hydroforming combines high strength with sleek aesthetics. This cost-effective method of shaping malleable metals produces lightweight, structurally sound forms that speak to the ocean setting by virtue of their water based process and their harmoniously curved shapes suggestive of inflatable beach toys or sea mammals.

Similar to stuffing a pillow or filling a balloon, two flat metal sheets with welded edges are 'inflated' with a water pump. Once the water is drained, the openings are trimmed and welded together. Then the smooth metal shell can be finished with a metallic flame coat (a process that involves spraying atomized metal alloys such as bronze, copper, or brass onto a surface). No further shaping is required and the need for complex dies and stamping is eliminated, decreasing cost and production time. This form has a higher strength-to-weight ratio and suffers less distortion than with other metal forming techniques. The final step will be filling the form with

expanding foam, providing more impact strength and rigidity.

2. *Wave II* by Stacy Dukes Design (attachment 1)
The intent is to use the existing base of the *Wave I* and add a low back-support feature to the bench-top. No additional information has been provide by the artist at this time.
3. *Puddle* by Ball & Nogues Studio (attachment 1)

Ball & Nogues Studio studied forms and structures of soft shell sea life and aquatic plants. They found that many of these sea creatures and plants, including sea grasses, kelp, and jellyfish, are often formed by a basic hollow tube structure. The bench design and form are derived from a slice, or section, of a simple hollow tube structure.

Glass fibers and acrylic co-polymers are added to a Portland cement base, reinforcing the concrete, much as steel reinforcing does in conventional concrete. The glass fiber reinforcement results in a product with much higher flexural and tensile strengths than normal concrete.

An admixture of pozzolans and titanium oxide are part of a proprietary Organcrete blend that produces the white coloring of the bench.

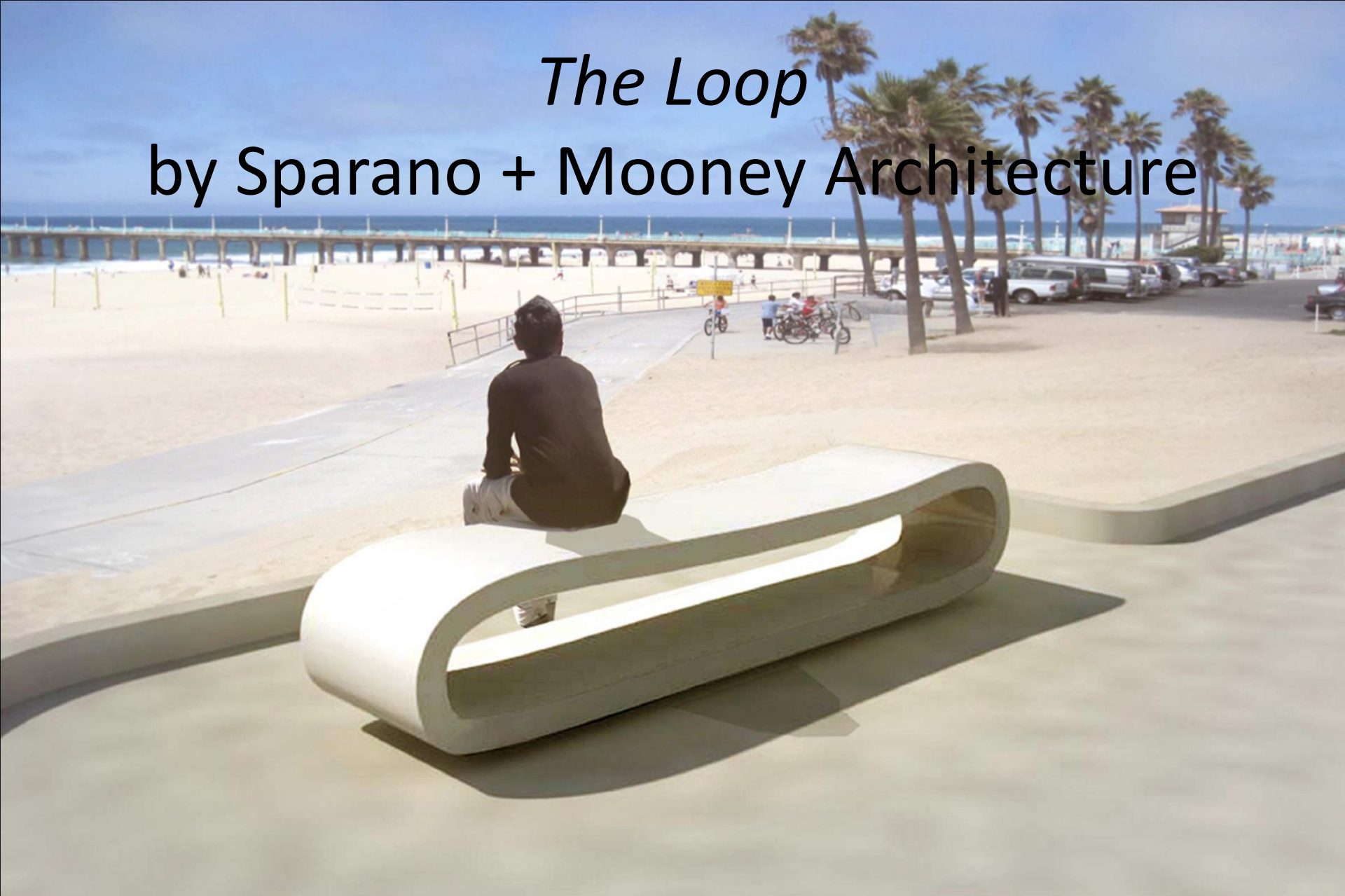
CONCLUSION:

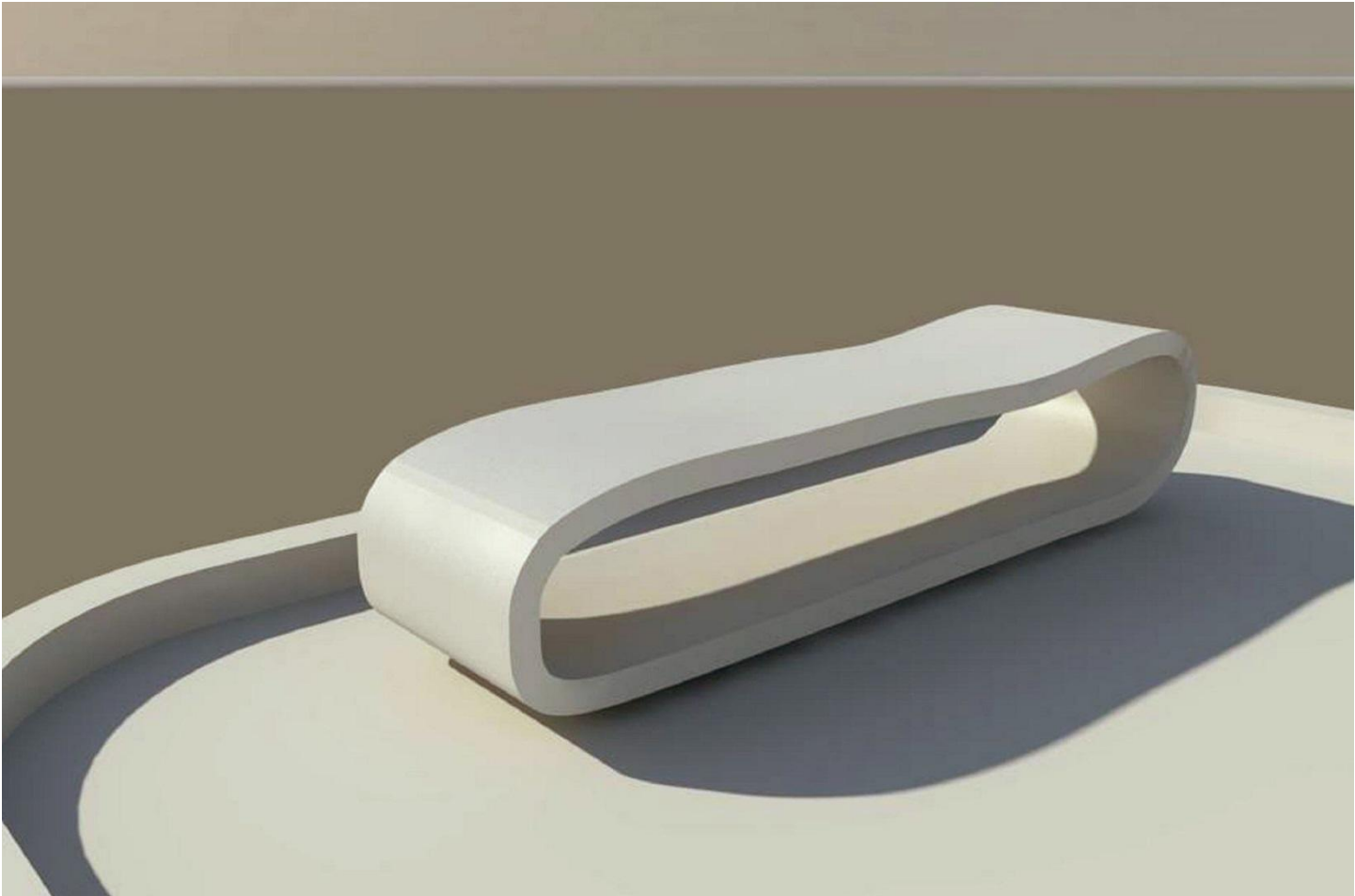
Staff recommends that the Cultural Arts Commission discuss and provide recommendation to the City Council for the new architectural bench design proposals for the Strand Alcove Bench Program's pre-approved bench catalog (attachment 2).

Attachments:

1. New Architectural Bench Designs:
The Loop by Sparano + Mooney Architecture
Wave II by Stacy Dukes Design
Puddle by Ball & Nogues Studio
2. Strand Alcove Bench Program brochure

The Loop by Sparano + Mooney Architecture





Wave II
by Stacy Dukes



Puddle

by Ball & Noguees Studio







Pre-existing benches

Project Bench Site

Available Bench Sites

Site Location

The Manhattan Beach Strand is 2 ½ miles in length from 1st Street to 45th Street. The concrete walk-way runs parallel to the bike path and ocean on the west. On the east are residential homes. Each Bench/Alcove will be treated as a whole unit. The alcove dimensions are approximately 5' by 15' in size. The concrete curb surrounding the alcove is 10" high. There is no access to water or electricity. Alcove sites are assigned to donors on a first come, first serve basis. Alcove sites are reserved directly with the City's Cultural Arts Manager.



City of Manhattan Beach
 Parks and Recreation Department
 1400 Highland Avenue
 Manhattan Beach, CA 90266



Strand Alcove

BENCH PROGRAM

CITY OF MANHATTAN BEACH

DONOR GUIDELINES



INTRODUCTION

The Cultural Arts Commission and City of Manhattan Beach invite donors to be part of the Manhattan Beach Strand Enhancement Project. The City intends to increase the public's enjoyment and civic pride through the addition of functional, yet artistic Bench/Alcove areas along the Strand. The following information explains the process for individuals interested in participating. 44 alcoves each containing an area for seating have been created adjacent to the Strand. Rather than continuing to maintain the standard benches, there is a desire to make these Bench/Alcoves an artistically pleasing and restful place to enjoy the beach and surrounding area. For project information, contact the City of Manhattan Beach Parks and Recreation Department Cultural Arts Manager (310) 802-5406.



Project Goal

The goal of this project is to create an artistic walk along the Strand and provide seating areas which:

- Are of high artistic quality and in keeping with the City's cultural identity of surf, sand and sea;
- Provide a comfortable space to rest and enjoy the ocean and surrounding views;
- Are appropriate to the site;
- Contain seating areas which are durable, safe, vandal resistant, environmentally sound, and require minimum maintenance.

THE PROCESS

The Options For Donating A Bench Along The Strand Are:

- Select from Pre-approved Designs: Potential donors can review pre-approved Bench/Alcove designs from pre-qualified artists.
- Donor's Design Option: The donor is permitted to submit an artist's rendering and model to the Cultural Arts Commission for review. If approved, the artist's proposal would be sent to City Council for approval.

Design submissions to the Commission are reviewed twice annually; in February and July. Benches formerly donated at the 16th and 17th Streets are examples of acceptable style benches. Designs that focus on memorializing the lives of individuals will not be considered.

Design Guidelines

- Americans with Disabilities Act (ADA) compliant, allowing a 48" entryway for wheelchair access
- Surface mounted (i.e. bolted in place)
- Materials should be environmentally sound
- Back rests and arm rests are optional
- Colors selected for the benches are to be lighter muted hues

Artist and Donor Recognition

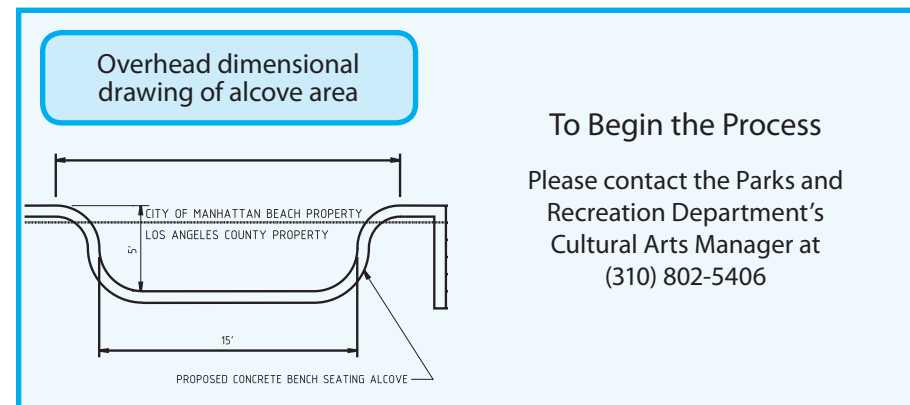
Recognition of the artist and donor for each Bench/Alcove area may be placed in a discreet location and the size of the letters will be no larger than one inch high.

Wording as follows:

- Donated by _____ - Artist: _____
- Donated by _____ for _____ - Artist: _____
- Donated by Friends and Family for _____ - Artist: _____

City Acknowledgment

A letter and Certificate of Appreciation signed by the Mayor and City Council will be issued.



To Begin the Process

Please contact the Parks and Recreation Department's Cultural Arts Manager at (310) 802-5406

PRE-APPROVED DESIGNS



THE WAVE by Stacy Dukes

THE SHELL by Christoph Kapeller
Artist Rendering

