

# Preparing for El Niño Community Workshop October 22, 2015

City of Manhattan Beach  
Public Works, Police and Fire Departments  
in Collaboration with the Los Angeles County  
Flood Control District



# Presentation Overview

- El Niño Storms Probability
- City Drainage System
- Public Works Response Plan
- Council Action at the October 6, 2015 Meeting
- L. A. Co. Flood Control District Response Plan
- Police and Fire Departments on Preparing for El Niño – Before/During/After a Storm
- Stormwater Reuse Tips
- Useful links



# El (Jack O') Niño



MakeAGIF.com



# 2015 El Niño

## Probability of Occurring at 95%

- Unprecedented agreement among meteorologists
- May rival the strongest El Niño previously recorded in 1997
- Likely to peak between October and January
- Weaken through Spring 2016

***PREPARATION IS KEY  
TO MINIMIZING POTENTIAL IMPACTS***



# **Department of Public Works**

**Raul Saenz, Utilities Manager**

**310.802.5315**

**[rsaenz@citymb.info](mailto:rsaenz@citymb.info)**



# STORM WATER SYSTEM

## City of Manhattan Beach

- Catch Basins**
  - City Catch Basin
  - City Grate
  - City Flow Thru
  - County Catch Basin
  - Private Catch Basin
- Manholes**
  - Storm Drain Manhole
- Storm Drain Lines**
  - City Pipe
  - County Pipe
  - Private Pipe
- Other**
  - ⊙ City Pump Station
  - Storm Drain Outfall
  - ◆ Low Flow Diversions

0 0.5 1 Miles

12/15/04

County Storm Drain



# City Stormwater Drainage System

- 21 Miles of Storm Lines
- 530 Catch Basins
- 8 Continuous Deflection Systems
- 2 Pump Lift Stations
- 3 Stormwater Retention Basins
- 1 Percolation Basin
- 2 Low Flow Diversion Structures



# City Storm Response Action Plan

Coordinate closely with MBPD/MBFD/County

- Weather conditions monitored continuously
- Field patrols are deployed at first rains
- Catch basins and low lying areas on a year-round maintenance schedule
- Stormwater pump stations are routinely tested year-round
- Sand bags, pumps/equipment and traffic control always staged for immediate deployment





# City Storm Response Action Plan

- Light storms addressed routinely through Public Works, Fire and Police Departments.
- If storm intensity increases risk to public safety/property, the Disaster Operations Center (DOC) will be activated and staffed.
- If storm intensity exceeds DOC's capability to manage, the Emergency Operations Center will be activated.



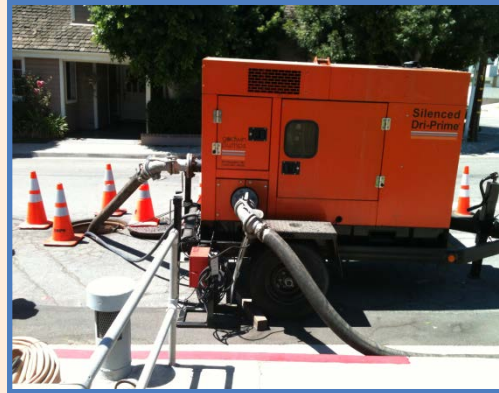
# October 6, 2015

## City Council Action

- Appropriated \$335,000 for the purchase of high capacity pumps, generators and traffic control equipment/supplies
- Authorized City Manager to approve any necessary purchase orders for equipment and supplies in the cumulative amount of \$335,000



# Equipment



# Equipment



# Sand Bags and Sand Availability

- 10 filled bags per household
- Unlimited sand and bags.  
**BRING YOUR OWN SHOVEL**

## Bagged and Unbagged

- PW Yard - 3621 Bell Ave

## Bagged Only

- Fire Station 1 – 400 15<sup>th</sup> Street
- Fire Station 2 – 1400 Manhattan Beach Blvd



# City/County Collaboration

- City / County have long established relationship
- City and County will work collaboratively on 24/7 basis
- Polliwog Lake designated as “Hot Spot” – assigned priority attention during storm season



# **Los Angeles County Flood Control District**

**Dan Sharp, Civil Engineer**



# Manhattan Beach Drainage Infrastructure



- **LA County Flood Control District**
  - 12 Miles of storm drains
  - 350 catch basins
  - Johnson Street Pump Station
  - Manhattan Beach Pump Station at Polliwog Park





# Pre-Storm Maintenance



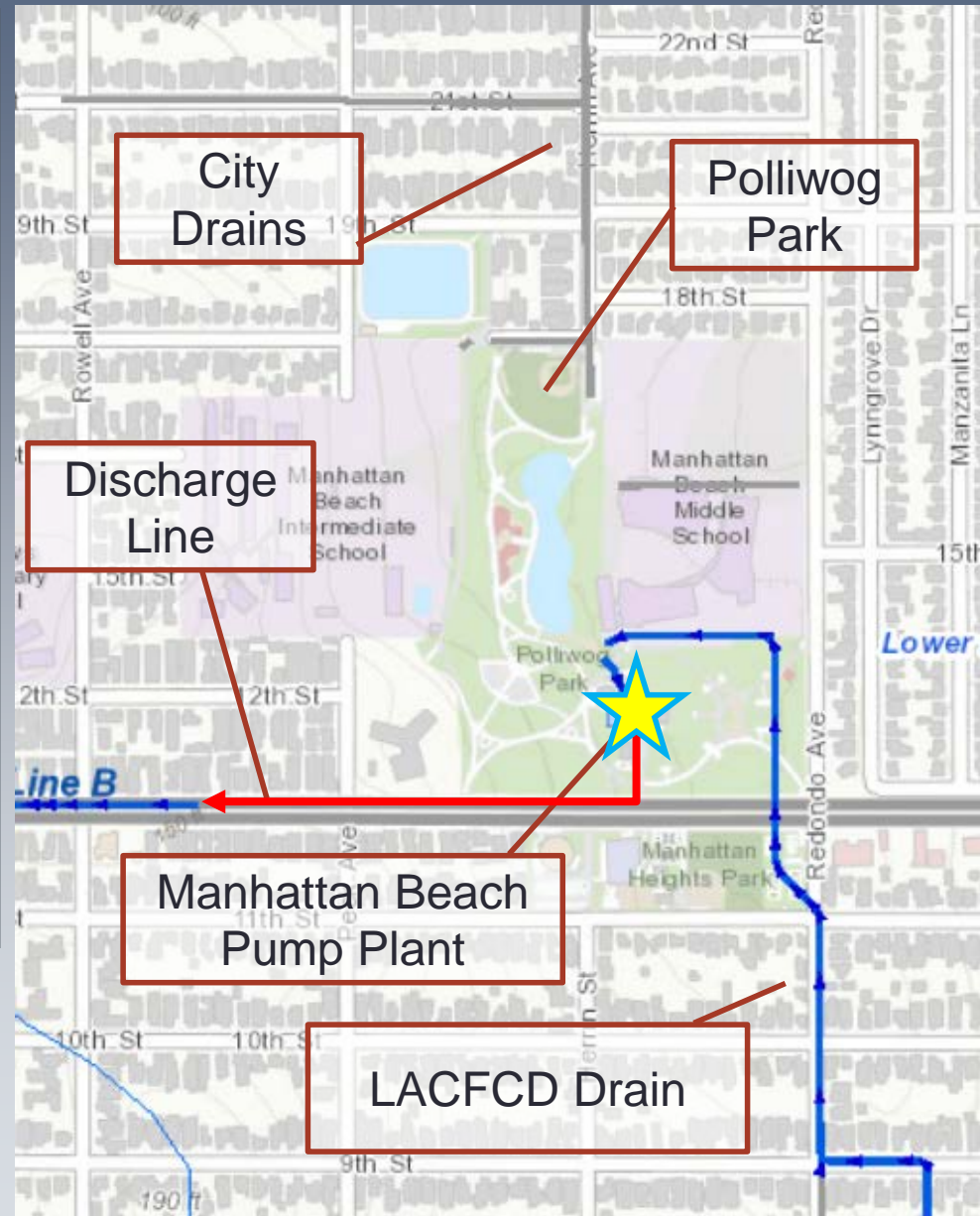
- Regular inspections of all LACFCD facilities
- Clean catch basins and drains
- Clean sumps at pump stations
- Test main and backup pumps at pump stations



# MB Pump Station at Polliwog Park



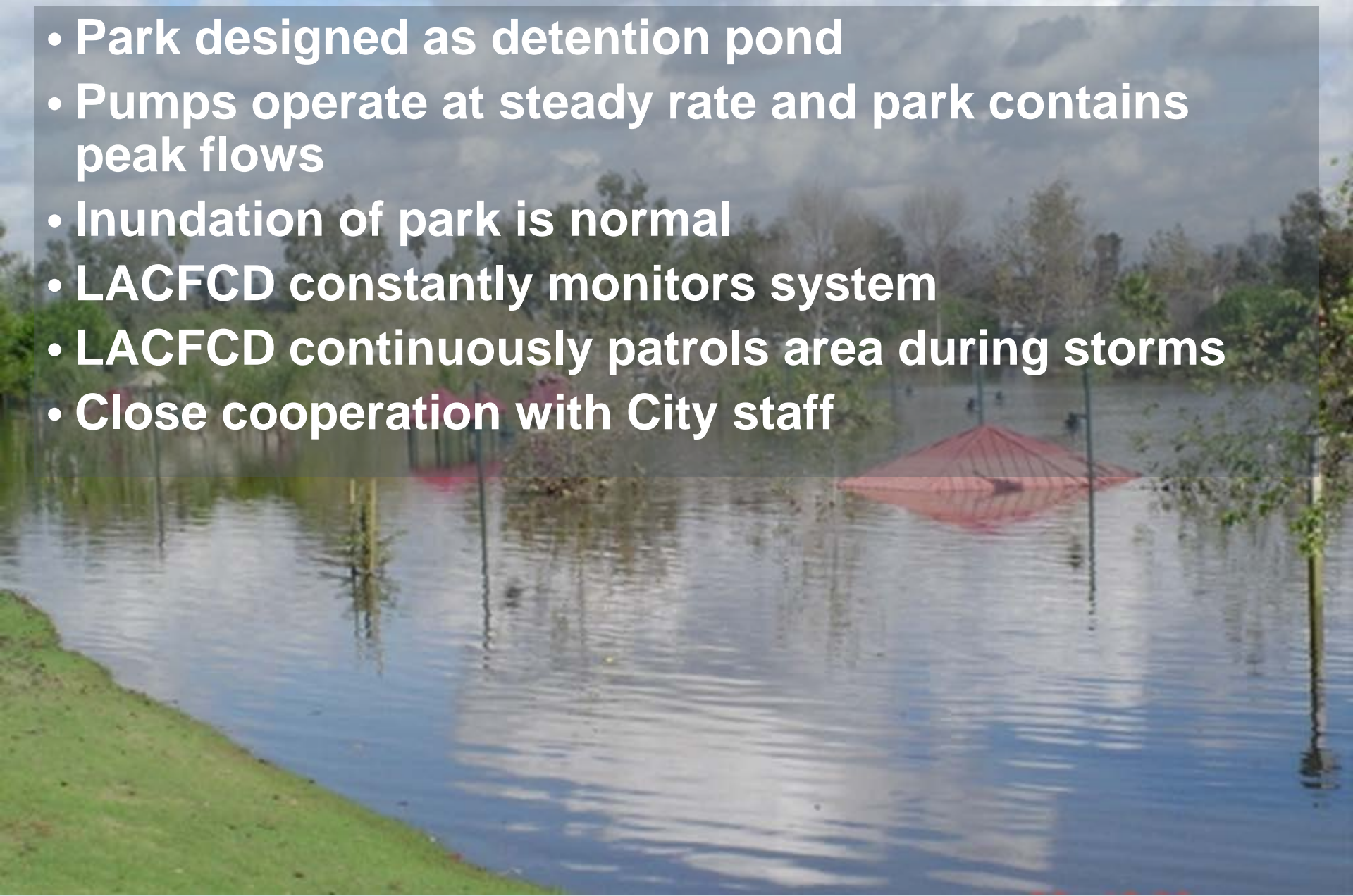
- Area is a local sump
- City and LACFCD drains
- 482 acre drainage area
- Pump Plant sends water to ocean
- System designed to work with detention pond



# MB Pump Station – Storm Operations



- Park designed as detention pond
- Pumps operate at steady rate and park contains peak flows
- Inundation of park is normal
- LACFCD constantly monitors system
- LACFCD continuously patrols area during storms
- Close cooperation with City staff



# **Manhattan Beach Police Department**

**Derrick Abell, Police Captain**  
**P: (310) 802-5177**  
**dabell@citymb.info**



# MB Police Department and El Niño

- Before a Flood (emergency)
- Preparing your home
- What to do during the emergency

***PREPARATION IS KEY  
TO MINIMIZING POTENTIAL IMPACTS***



# Before a Flood (emergency)

- Stay informed
  - ✓ [www.weather.gov](http://www.weather.gov)
  - ✓ Local news
  - ✓ Nixle
  - ✓ City website/E-news
- Is your home in a potential problem area?
- Practice alternate routes to/from home & school
- Have a family communication plan
- Assemble your emergency kit
- Keep electronics charged



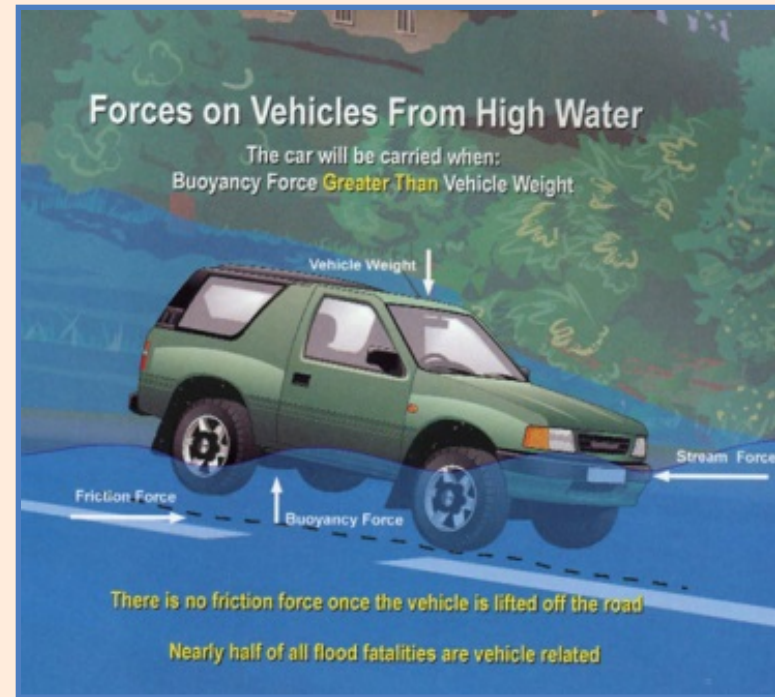
# Prepare Your Home

- Do your windows close and lock securely?
  - ✓ Check weather-stripping for proper seal
- Do your doors close and lock securely?
  - ✓ Deadbolts at 1" in length & case-hardened steel
  - ✓ Doors to be solid construction and solid frame
- Are your address numbers clearly posted & visible?
- Clear landscaping from window/door/roof areas
- Verify your alarm system is in proper working order
  - ✓ Schedule a service call, if needed



# During a Flood

- Stay informed
- Follow all evacuation orders and heed warning signs
- If you have time, disconnect utilities and appliances if you have to leave
- Avoid flood waters – It is NEVER safe to drive or walk through flood waters





# When The Water Rises...



Most flood-related deaths and injuries could be avoided if people followed this simple advice:

## ***TURN AROUND DON'T DROWN***

- 6 inches of fast-moving flood water can knock an adult off his/her feet and sweep them away
- 12 inches of moving water can carry off a small car
- 18-24 inches of water can carry away trucks, vans & SUV's



# **Manhattan Beach Fire Department**

**Scott Hafdell, Battalion Chief**  
**310.802.5204**  
**[shafdell@citymb.info](mailto:shafdell@citymb.info)**



# MB Fire Department

- Stay informed of weather conditions
- Store extra food and water
- Be prepared for possible power outages
- Keep flashlights/batteries in multiple locations
- Turn off electric breakers if home starts flooding
- Be ready to evacuate and know safest routes

***PREPARATION IS KEY  
TO MINIMIZING POTENTIAL IMPACTS***



# Tree Pruning

- Prune large trees
- Have trees near power lines and windows trimmed



# Below Grade Garages and Yards

- Clear drains of debris
- Test Pumps to ensure they work
- If your home drainage system relies on pumps consider a generator.
- Keep rain gutter and storm drains clear of debris.
- Obtain and use sand bags before the storm



# Power Lines

- Treat All Downed Wires as Live Wires
- Report Any Downed Power Lines to 911



# Simple Stormwater Harvesting



# Complex Stormwater Harvesting





# Useful El Niño Links

- **MB Police, Fire and Public Works Departments**
  - ✓ Non Emergency 24/7, call (310) 545-4566
  - ✓ Life Threatening Emergency 24/7, call 911
- **National Weather Service**  
[www.weather.gov](http://www.weather.gov)
- **Outage Center - Southern California Edison**  
[www.on.sce.com](http://www.on.sce.com)
- **ALERTS: Flash Floods, Roads Closed, Wind**  
[www.lacounty.gov](http://www.lacounty.gov)
- **Storm Weather Safety Tips**  
<http://www.youtube.com/watch?v=mjzpXVRB2nw&feature=youtu.be>



## WHAT'S NEW

# Don't get the Flu. Don't spread the Flu.

**Free Flu Shot Clinic (ages 3+) - Wednesday, October 28th**  
10:00 AM - 12:00 PM at Joslyn Community Center

### FREE FLU SHOT CLINIC

Wednesday, October 28, 2015 from 10:00 AM to 12:00 PM at the Joslyn Community Center

ENEWS SIGN UP

ONLINE REQUESTS

ACTIVITY REGISTRATION

ONLINE PAYMENTS

PERMITS & LICENSES

AGENDAS, MINUTES & eCOMMENTS

### CONNECT WITH US



OPEN CITY HALL

DROUGHT

DOWNTOWN PLAN

VILLAGE MALL

STORM WATCH

GOING GREEN

### CURRENT NEWS

City of Manhattan Beach Amends Water Conservation Ordinance

Downlow Specific Plan Community Workshop October 8th

Downlow Crosswalk Replacement and Slurry Seal Project

October 9, 2015 - Information Memo: Strategic Planning Process

[READ MORE >>](#)

### CURRENT EVENTS

### MEETINGS

Oct 22 Preparing For El Niño 2015

Oct 22 Parking and Public Improvements Commission Meeting

Oct 26 Parks and Recreation Commission Meeting

Oct 27 City Council Adjourned Regular Meeting

[FULL CALENDAR >>](#)



# Questions???

