



**CITY OF MANHATTAN BEACH
PARKS AND RECREATION COMMISSION**

**October 26, 2015
Manhattan Beach City Hall
1400 Highland Ave.
Manhattan Beach, CA 90266
6:30 PM**

A G E N D A

A. CALL TO ORDER

B. PLEDGE TO THE FLAG

C. ROLL CALL

Commissioner Rothans
Commissioner Allard
Commissioner Paralusz
Commissioner Allen

Commissioner Manna
Commissioner Jones
Commissioner Enomoto

D. APPROVAL OF MINUTES

September 28, 2015

E. CEREMONIAL

F. AUDIENCE PARTICIPATION (3-Minute Limit)

G. GENERAL BUSINESS

13/1028.3 Discussion of Skateboard Park – Presentation by Kanten Russell, Stantec Consulting

15/1027.1 Discussion of Salute to the Troops 2016 Event

15/1027.2 Discussion of Sunscreen Pilot Project

H. COMMISSION ITEMS

I. STAFF ITEMS

Update on Parks and Recreation Programs and Events

J. ADJOURNMENT

CITY OF MANHATTAN BEACH
MINUTES OF THE PARKS AND RECREATION COMMISSION
Manhattan Beach City Hall
1400 Highland Ave.
Manhattan Beach, CA 90266
September 28, 2015
6:30 PM

CONTENTS

A. CALL TO ORDER

The meeting was called to order at 6:33 PM.

B. PLEDGE TO THE FLAG

C. ROLL CALL

Present: Commissioners Rothans, Allard, Manna, Allen, Jones and Enomoto

Absent: Commissioner Paralusz

Others present: Parks and Recreation Director, Mark Leyman and recording secretary,
Linda Robb

D. APPROVAL OF MINUTES

Page 2, line 3 - Commissioner Paralusz requested that "Boy Scouts" be capitalized. Recording Secretary Linda Robb corrected page 1, F under Audience Participation, "Commissioner Rothans" be corrected to read Commissioner Allard.

Commissioner Rothans moved to approve the July 27, 2015 minutes with the above changes. The motion was seconded by Commissioner Manna. The motion passed.

Ayes: Commissioners Allard, Allen, Rothans, Manna, Allen, Paralusz, Jones
and Enomoto

Nays: None

Abstain: None

Absent: None

E. CEREMONIAL

F. AUDIENCE PARTICIPATION (3-Minute Limit)

Commissioner Allard opened the floor to audience participation.

Lee Barr, resident, addressed the commissioners who were not present at the last meeting to thank them for a job well done for the Salute to the Troops event. Mr. Barr suggested making the Salute to the Troops event a part of the Concerts in the Park.

The floor was closed to public comment.

G. GENERAL BUSINESS - None

H. COMMISSION ITEMS

Commissioner Allard announced that the budget for Salute to the Troops had been distributed. The budget showed a small surplus. Commissioner Paralusz asked what happens to the surplus. Parks and Recreation Director Mark Leyman stated that it would stay in the trust account and could be used toward a future event.

Commissioner Rothans requested a correction to the budget to show Mark and Dickie Burton.

Director Leyman stated that the memo to request direction from City Council regarding the Salute to the Troops should be more specific as to whether or not the Commission wants to continue planning and fundraising for the event and if it should be established as an annual event, and the date of the event.

Commissioner Paralusz would like for it to be an annual event and for the Commission to continue to plan and fundraise for it.

Commissioner Jones asked how the attendance increased for the rest of the Concert season. Director Leyman stated that attendance for the Salute to the Troops was on the lower end compared to the rest of the concerts but it is usually the case that attendance increases based on successful events and he guessed that attendance would likely double if the event were held again next year due to word of mouth.

Commissioner Rothans echoed Commissioner Paralusz' sentiments regarding the event being great. He suggested that the Commission leave it to the City Council to decide if this should be an annual event but would like to see it happen again next year. Commissioner Manna stated that both he and Commissioner Rothans will term out before the concert itself if it happens next year. Commissioner Paralusz stated that with the timing, most of the legwork would be done by the end of May if the event were to kick off the concert season.

Commissioner Jones agreed that the event should continue and the Commission should be responsible for planning and fundraising. She stated that this event may be an incentive for people to apply to be on the Park and Recreation Commission.

Commissioner Enomoto stated that the event was very successful and may encourage people want to become involved with the Commission.

Commissioner Allard stated that he favored a date at the beginning of the summer. Commissioner Allen moved to keep the planning and fundraising for the Salute to the Troops event within the Commission for the purposes of the request to City Council. Commissioner Paralusz seconded the motion. The motion passed. Unanimous.

Ayes: Commissioners Allard, Allen, Rothans, Manna, Paralusz, Jones
and Enomoto

Nays: None

Abstain: None

Absent: None

The commission decided that July 3rd 2016 would be recommended for the date.

Commissioner Jones presented a sunscreen project and distributed information on skin cancer and melanoma to illustrate the need for sunscreen dispensers around town. Her vision is to have the Manhattan Beach logo on ten dispensers located around town. Five dispensers would be placed in the elementary schools so that children can be made aware and learn about the importance of sunscreen. The other five would be distributed at other

locations around town. The budget for ten dispensers to kick off the event will be in the neighborhood of \$8,000 - \$15,000. She stated that the hope is that in the future Little Company of Mary, Torrance Memorial or other Medical Center to validate the importance of the endeavor. Commissioner Paralusz inquired if Commissioner Jones had spoken with Little Company of Mary. Commissioner Paralusz stated that she wasn't aware of Little Company of Mary funding this type of thing but that Beach Cities might be an option for a micro-grant with the right timing. Commissioner Manna asked if there is any information on how long a dispenser full of lotion will last. Commissioner Jones estimates refilling every week and hopes that the staff responsible for filling mutt mitt containers can monitor the sunscreen. Commissioner Enomoto mentioned pitching the idea of funding the refilling of the sunscreen to Leadership Manhattan Beach (LMB). Commissioner Jones would like for this project to be either a Parks and Recreation project or an LMB project but not both. Commissioner Paralusz stated that there have been projects that were started by LMB that were later adopted by the City. He offered Mutts Mitts as an example.

Director Leyman reported that he had updated the City Council that this might be coming up for approval for discussion. He asked for clarification on the scope of the project (generally, how many dispensers and generally, where would they be located). He stated that sponsorship should also be addressed. He stated that Beach Cities Health District would be a natural sponsor but a commercial sponsor might be viewed differently. Commissioner Jones stated that she envisioned ten dispensers as a pilot program with five in the elementary schools and five placed strategically around town. Commissioner Rothans stated that he liked the idea but was not sure if they had any jurisdiction over the schools. Commissioner Jones stated that it would need to be approved by the School Board and if they did not want the dispensers on school grounds, they would be placed in other locations around the City.

Commissioner Jones moved to present a memo to City Council on the Sunscreen project. The motion was seconded by Commissioner Rothans. The motion passed.

Ayes: Commissioners Allard, Rothans, Manna, Allen, Paralusz, Jones
and Enomoto

Nays: None

Abstain: None

Absent: None

Commissioner Allard asked the Commissioners if they would like to enter a Pumpkin in the Pumpkin Race. Commissioner Rothans volunteered to take the lead on the Pumpkin project.

I. **STAFF ITEMS** – Director Leyman gave the following updates:

1. Skateboard park – Kanten Russel from Stantec is the skateboard park consultant hired to study the feasibility of a skateboard park and facilitate community meetings. The first meeting was held on August 6th with about forty people in attendance. At the August 6th meeting, the locations were narrowed to top 3 options through input and survey results. The three locations are: Marine Avenue Park, Manhattan Heights and El Porto. Each of the locations were noticed within 500 feet, traditionally notices are sent to residences within 100 feet. At the second meeting on September 6th, feedback was received and the top two locations are Marine Avenue Park and Manhattan Heights. About 1/3 of the crowd was from El Porto and were strongly opposed to that location. Generally, it has been observed that as the size of the park goes down, support increases. Mr. Russel educated the audience about the different skate park size

and feature options. Open City Hall still open. Mr. Russell will be presenting to the Commission at the October 27th meeting for recommendations to City Council. It will go to the following meeting unless there is a lot of input from the public or the commission that needs to be incorporated. Commissioner Jones asked if the funding would potentially be commercial. Director Leyman stated a corporate sponsorship option would definitely be presented.

2. Strategic Planning Community Input meeting – Director Leyman encouraged the commissioners to get involved by attending the Strategic Planning Community input meeting on Thursday, October 15 from 6:00-9:00 PM at the Joslyn Center and also at the Older Adults Program Lunch Bunch luncheon the same day.

J. ADJOURNMENT

Commissioner Paralusz moved to adjourn. Commissioner Jones seconded the motion. The motion passed. The meeting was adjourned at 07:12 p.m. unanimous

Ayes: Commissioners Allard, Allen, Rothans, Manna, Allen, Paralusz, Jones and Enomoto

Nays: None

Abstain: None

Absent: None

DRAFT

TO:

Parks and Recreation Commission Members

FROM:

Mark Leyman, Parks and Recreation Director
Idris Al-Oboudi, Recreation Services Manager
Andrew Berg, Recreation Supervisor

SUBJECT:

Skateboard Park Project (Parks and Recreation Director Leyman)

RECOMMENDATION:

Staff recommends that the Parks and Recreation Commission discuss and provide further input on the Skateboard Park Project for City Council consideration.

FISCAL IMPLICATIONS:

There are no fiscal implications associated with this item.

BACKGROUND:

At the July 15, 2014 City Council Meeting, the City Council directed staff to develop a request for proposal to look into the feasibility of a skate park and develop options for City Council consideration.

The specific City Council direction was to “have a consultant who has the expertise and who is a good facilitator (who will not be allowed to bid on the project), keep it at the Parks and Recreation level, with no more ad hoc committee, have a facilitator meeting with a cross-section of the community, and if they propose locations they need to propose what type of park and how it would be funded, and take Polliwog Park out of consideration. A friendly amendment was added by Councilmember Burton to prioritize locations that are nonresidential and explore donations of private property and private funding.”

Based upon the City Council direction, staff developed a request for proposal (RFP) for the skate park feasibility. The City Council approved the request for proposal at the October 7, 2014 Council meeting. Three top consultants in the skate industry submitted proposals and were interviewed by a selection committee consisting of two residents from the Friends of Polliwog Park community group, a Parks and Recreation Commissioner, and a local skateboard park proponent. The Committee unanimously selected Stantec for their background, expertise and commitment to the City’s community outreach process.

The City Council approved the contract with Stantec at the January 6, 2015 City Council meeting.

DISCUSSION:

Staff worked with Kanten Russel, the project manager for Stantec, to develop a comprehensive community input plan and the specific scope of services to reflect the City Council's direction.

The scope of work included:

1. Review of data from previous skate park public outreach meetings
2. Conduct a community needs assessment and skate park survey
3. Site analysis and assessment of previously reviewed and potential locations throughout the City (excluding any location in Polliwog Park)
4. Development of community outreach meetings and public input process
5. Selection of skate park location, prioritizing non-residential areas
6. Selection of skate park type
7. Recommendations for funding (explore donations of private property and private funding) and cost estimates
8. Presentation to the Parks and Recreation Commission
9. Presentation to the City Council for action

Outreach

Mr. Russell reviewed all data from previous skate park public outreach meetings, which included six ad-hoc committee meetings, three Parks and Recreation Commission meetings, input from the City's online MB forum and community survey data. Mr. Russell also toured the City to conduct a site analysis of the approximately 20 previously proposed locations. Per City Council direction, Polliwog Park sites were not reviewed and are excluded from consideration. Mr. Russell facilitated two Community input meetings and discussed skate park location, type, design, funding and cost estimates. In addition to the Community meetings, input was gathered through the City's Open City Hall online forum, which included a skate park survey and e-mail blasts were sent to the department database, school district and distributed to community groups.

Community Survey

Information on the skate park was also gathered through the City's Community survey, to determine residents' positions on building a skate park in Manhattan Beach. The results of the community survey showed that in general, intensity of opposition outweighs intensity of support. The survey also showed however, that support outweighs opposition two-to-one when the proposal does not require City tax dollars. The survey also showed support for a small skate park, and that support declines as the size of a proposed skateboard park increases. In conclusion, the survey showed the strongest support for a small park in an existing public space that used no City tax dollars.

Community Input Meetings

The first of the two community meetings provided an overview of skateboard park designs and terminology and an analysis of potential sites within the City. Polliwog Park and Begg Field/parking lot locations were not considered. Input received during the meeting mirrored the results of the community survey. Potential sites were discussed

and the top three sites were identified. Following the meeting, notices were sent to the owners of residences within 500 feet of each of the three locations (Attachment 1), informing residents of the discussion of potential skateboard park locations and design and the community input process. The notices included diagrams and descriptions of site options.

The second community meeting presented the top three potential locations for a skateboard park: Marine Avenue Park, Manhattan Heights Park, and an area at the north end of El Porto beach. There was strong opposition to the El Porto location from meeting attendees, who cited the location's proximity to residences, distance from schools and the Teen Center, traffic and parking concerns, and impact on open space. Those not opposed to a skateboard park generally supported both the Marine Ave. Park and Manhattan Heights Park locations, noting their proximity to the Teen Center and Manhattan Beach Middle School, distance from residences, and low impact on existing activities and amenities.

Feedback was also received via email to mbskatepark@citymb.info. Most of the seventy-one emails received expressed opposition to the El Porto location. Several were written in general support of a skateboard park and several written in opposition (Attachment 2).

Project Funding

Project funding was consistently raised as a concern in the community input meetings, on the survey, and in emails. Support for a skateboard Park was strongest when not funded by City tax dollars. Alternative funding sources include, community fundraising, grants from organizations such as the Tony Hawk Foundation and private sponsorships from companies such as Vans, Converse and Skechers. A skateboard park could also be built privately in cooperation with the Manhattan Village Mall or similar company.

Possible Locations

Community input and discussions indicate support for one or more small skate-spot or skate-dot type facilities located at either Marine Avenue Park or Manhattan Heights Park. The project would receive more support if funded without the use of City dollars, located away from residences, and not built to be a regional destination.

The possible location size, cost and design of the locations are as follows (Attachment 3):

Marine Ave. Park

Skate Path Concept #1:

Size: 2,000 square feet

Cost: \$100,000

Skate Path Concept #2 & #3:

Size: 5,000 square feet

Cost: \$250,000

PROS: Non-residential location, does not replace or interfere with existing amenities, ample parking.

CONS: Funding, low visibility, accessibility.

Manhattan Heights Park (two locations)

Skate Spot Concept Location#1:

Size: 3,000 square feet

Cost: \$150,000

Skateable Art Concept at Location#2:

Size: 1,500 square feet

Cost: \$200,000

PROS:

Central location near Teen Center and Middle School, skateboard camps and classes take place on site, not immediately adjacent to residences

CONS:

Funding, small area, traffic related hazards on Manhattan Beach Blvd.

PUBLIC OUTREACH/INTEREST:

The public was noticed through ads and press releases in the Beach Reporter. A survey was administered via Open City Hall, two Community Input Meetings were held, and feedback was received via email and phone. Residences adjacent to potential sites were noticed and encouraged to attend meetings and provide feedback. Eighty-six people participated in the survey, 71 provided feedback via email, and approximately 80 people attended the two community input meetings.

CONCLUSION:

Staff recommends that the Parks and Recreation Commission discuss and provide direction on the Skateboard Park Project.

Attachments:

1. Skate park notice
2. E-mail input for the skate park
3. Presentation including skate park location, design, size and funding options

Skate Park Feasibility Study For The City Of Manhattan Beach

Presented by:

Kanten Russell, P.M. /Senior Design



FEASIBILITY STUDY PROCESS

Analyze potential sites for skate park

Facilitate public input meetings

Gather surveys and Information

Provide Skate Park Examples and Costs

Explore donations of private property and Funding

Provide Recommendations

DESIGN CONSIDERATIONS

STYLE OF PARK

Plaza / Street (Streetscape)

- *Elements such as curbs, rails, ledges, stairs, ledges, gaps, planter boxers and benches are incorporated into a realistic street skating/riding environment.*
- *Street style parks are designed to resemble traditional urban street areas.*
 - *Accommodates beginners to advanced skaters.*

Transition / Flow

- *Flow style parks consist of features such as curved walls, banks, ledges, pyramids, volcanoes, large flat bottom areas as well as large decking areas.*

The wide open course allows users to freely ride in many directions. Accommodates beginners to advanced skaters.

Bowls (Transition)

- *Skate Feature that resemble a swimming pool with varying depths, walls, extensions and coping.*
 - *Accommodates moderate to advanced skaters.*

Hybrid / Combo

- *A combination style park combines one or more elements from at least two styles of parks.*
 - *Accommodates beginner to advanced skaters.*
-

DESIGN CONSIDERATIONS

DOT

- The Skate Dot is the smallest skateable space possible.
- Dots are always a single structure - usually a sidewalk or paved open space.
- Skate Dots can support 3 to 5 users, one at a time.



SPOT

- Small skateable elements integrated into the existing landscape to larger areas that can accommodate up to a dozen riders, typically comprised of several street terrain elements.
- Roughly 1,500 square feet in size.
- Can be integrated into existing parks as "additional playgrounds" since essentially that is what they are; areas for kids to play.



PATHS

- Networks of skateable paths and existing routes which are skate friendly
- Integrated into a community's transportation plan or existing park pathways
- Provides routes for skaters/cyclists to venture to higher challenging spots



NEIGHBORHOOD SKATEPARK

- They are between 6,000 to 10,000 square feet with a diverse arrangement of structures.
- Neighborhood skateparks can support dozens of users with up to 6 skating simultaneously depending on the size and design.



DESIGN CONSIDERATIONS

SKATEABLE ART

- Skateable Art is a creative structure that is designed and built specifically to be "skateboarding friendly."
- Most skateable art features forms that are compelling to a broader pedestrian audience. In some cases the public may be unaware that the form is intended to attract skateboarders.
- Skateable art is usually commissioned specifically for a site though some companies offer these pieces as catalog products.



STREETSCAPE

- Street terrain consists of skating challenges which replicate those types of challenges typically found in urban settings.
- These include benches, seating walls, picnic tables, staircases, handrails and various lengths and slopes of ramps.



TRANSITION

Mini - Transition Terrain:

- Consists of any gradual transition from horizontal and do not include a vertical face.
- These are typically smaller than six feet in height. Many of the modular type ramps are considered to be mini-terrain.

Vertical Transition Terrain:

- This terrain is similar to mini-transition but featuring walls up to and sometimes exceeding vertical.
- "Vert" was popularized through the use of empty swimming pools.



MEETING #2 POTENTIAL LOCATIONS

SELECTED POTENTIAL SKATE SPOT LOCATIONS

Established from feedback at the Skate Park Overview Meeting #1

- *MARINE PARK*
- *MANHATTAN HEIGHTS PARK*
- *EL PORTO BEACH*
- *OTHER POSSIBLE LOCATIONS*

We were asked to look at these potential locations to look at the feasibility of a small skate park, skate spot, or skate path.

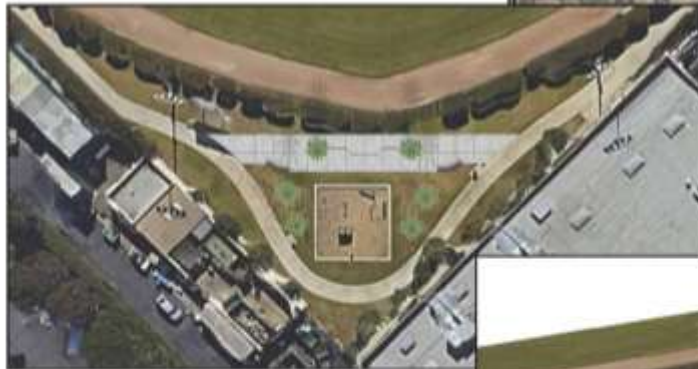
DESIGN CONSIDERATIONS

MARINE AVENUE PARK

Marine Avenue Park is located on Marine Avenue at Redondo Ave. It is adjacent to Manhattan Beach Studios, Northrop Grumman and Marine Sports Complex.

This park encompasses just over 7.5 acres and is a favorite spot for young children's birthday parties and family gatherings. Facilities include an off-leash dog run, full-size baseball field, turf soccer field, two basketball courts, racquetball courts, exercise area, picnic tables, children's play areas and a small recreation activity building, restrooms and drinking fountains.

Ample parking is available in the lot bordering Marine Avenue.



DESIGN CONSIDERATIONS

MANHATTAN HEIGHTS PARK

Manhattan Heights Park is located across Manhattan Beach Boulevard from Polliwog Park. This park encompasses almost 4 acres and is a popular site for social, informal family gatherings. Facilities include: community center, lighted athletic field, tennis courts, paddle tennis courts, basketball courts, horseshoe court, small children's play area and picnic facilities.

Manhattan Heights Community Center is home to the After School REC Program, Teen Center and a Senior Citizens' Club and is available to the public for meetings, parties and other gatherings.

Parking is available in an adjacent lot and along Manhattan Beach Boulevard, Redondo Avenue and Eleventh St.



DESIGN CONSIDERATIONS

EL PORTO

El Porto Beach is located on the Northern border of Manhattan Beach near the Chevron oil refinery and the Hyperion sewage treatment plant and is protected under the State Park System.

The beach is staffed by LA County Lifeguards and features volleyball courts, restrooms and showers.

Parking is available in the large metered parking lot accessible at the west end of 45th Street from Highland Avenue.



FINAL CONSENSUS OF POTENTIAL LOCATIONS

ALTERNATIVE #1:

Marine Ave. Park

PROS:

Non-residential location, does not replace or interfere with existing amenities, ample parking

CONS:

Funding, low visibility

ALTERNATIVE #2:

Manhattan Heights Park (two locations)

PROS:

Central location near Teen Center and Middle School, skateboard camps and classes take place on site, not immediately adjacent to residences

CONS:

Funding, small area, traffic related hazards on Manhattan Beach Blvd.

SIZE AND COST OF POTENTIAL LOCATIONS

Marine Ave. Park Skate Path Concept #1

SIZE:

2,000 s.f.

COST:

\$100,000

Marine Ave. Park Skate Park Concept #2 & #3

SIZE:

5,000 s.f.

COST:

\$250,000

Manhattan Heights Park Skate Spot Concept at Location #1

SIZE:

3,000 s.f.

COST:

\$150,000

Manhattan Heights Park Skateable Art Concept at Location #2

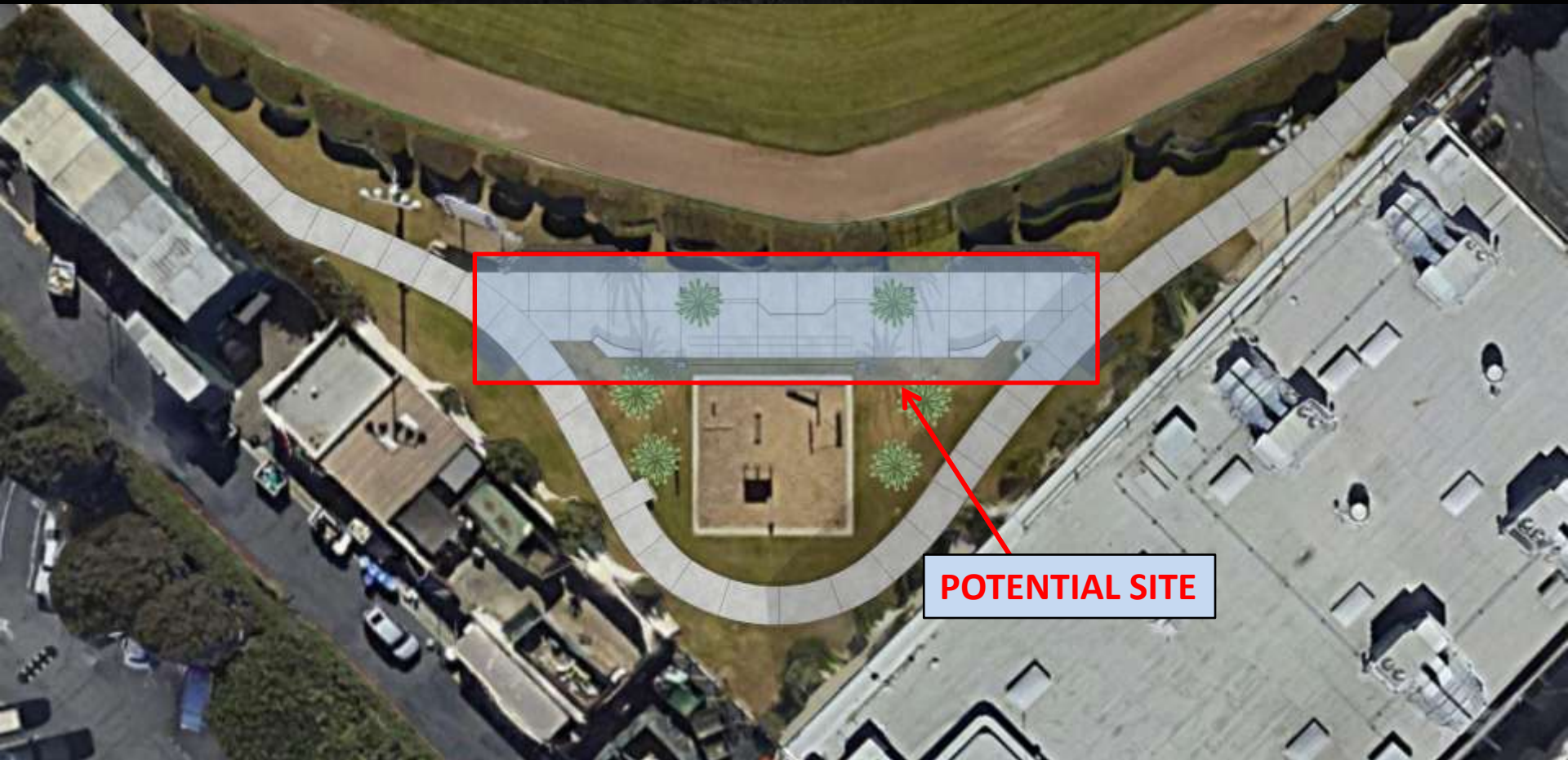
SIZE:

1,500 s.f.

COST:

\$200,000

SITE ANALYSIS – MARINE PARK CONCEPT 1



POTENTIAL SITE

SITE ANALYSIS – MARINE PARK CONCEPT 1



SITE ANALYSIS – MARINE PARK CONCEPT 1



SITE ANALYSIS – MARINE PARK CONCEPT 2



POTENTIAL SITE

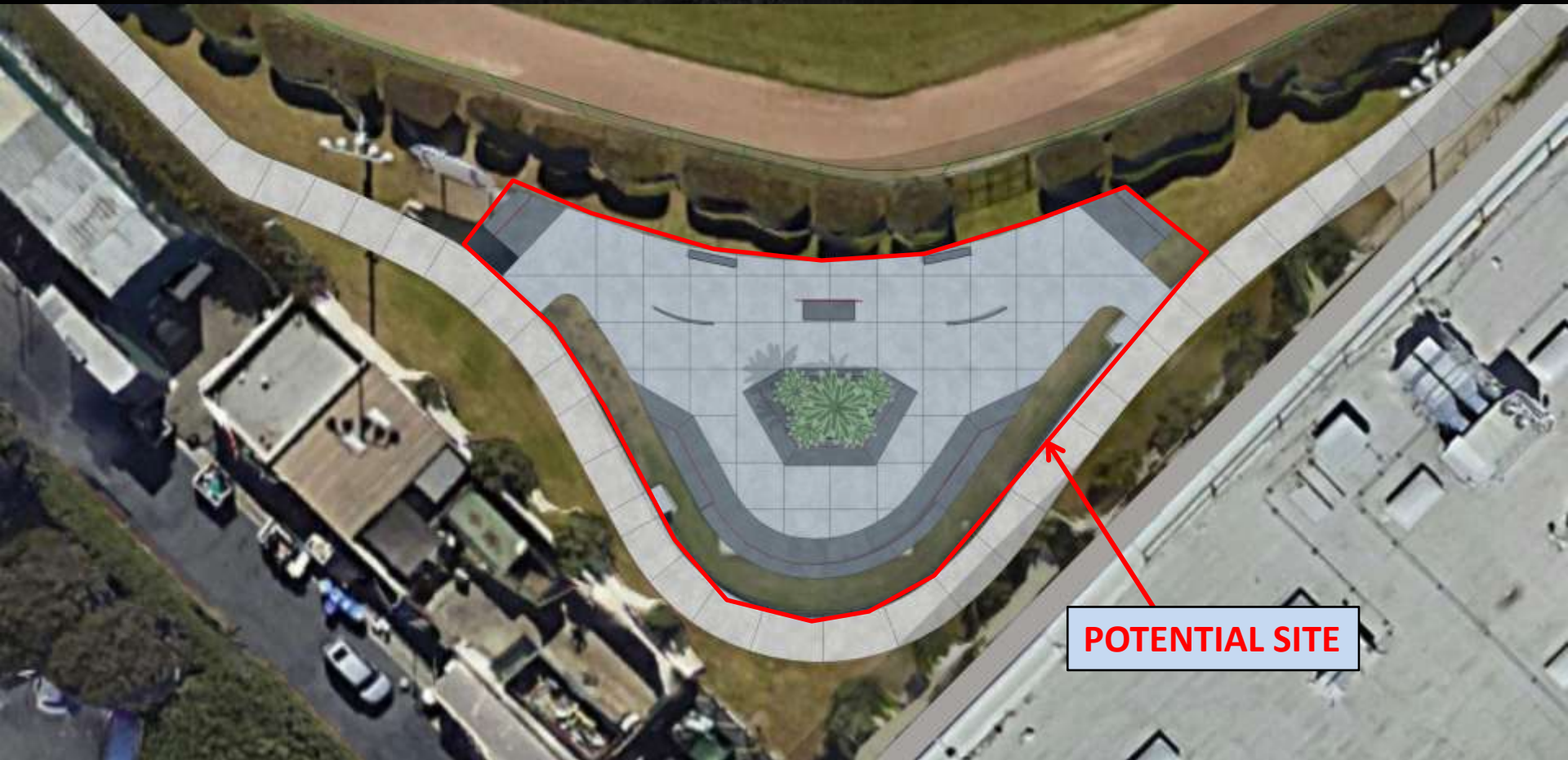
SITE ANALYSIS – MARINE PARK CONCEPT 2



SITE ANALYSIS – MARINE PARK CONCEPT 2



SITE ANALYSIS – MARINE PARK CONCEPT 3



POTENTIAL SITE

SITE ANALYSIS – MARINE PARK CONCEPT 3



SITE ANALYSIS – MARINE PARK CONCEPT 3



SITE ANALYSIS – MANHATTAN HEIGHTS CONCEPT 1



POTENTIAL SITE #1

SITE ANALYSIS – MANHATTAN HEIGHTS CONCEPT 1



SITE ANALYSIS – MANHATTAN HEIGHTS CONCEPT 1



SITE ANALYSIS – MANHATTAN HEIGHTS CONCEPT 2



POTENTIAL SITE #2

SITE ANALYSIS – MANHATTAN HEIGHTS CONCEPT 2



SITE ANALYSIS – MANHATTAN HEIGHTS CONCEPT 2



FINAL CONCLUSION OF FEASIBILITY STUDY

Community input was gathered through a survey, two community input meetings, and comments received via email.

A review of the results of the community survey, administered through Open City Hall, showed that, generally:

- intensity of opposition outweighs intensity of support*
- support outweighs opposition two-to-one when the proposal does not require City tax dollars*
- The survey showed the strongest support for a small park in an existing public space that used no City tax dollars.*

The first of the two community meetings provided an overview of skateboard park designs and terminology and an analysis of potential sites within the City. Polliwog Park and Begg Field/parking lot locations were not considered. Input received during the meeting mirrored the results of the community survey. Potential sites were discussed and the top three sites were identified.

FINAL CONCLUSION OF FEASIBILITY STUDY

The second community meeting presented the top three potential locations for a skateboard park: Marine Ave. Park, Manhattan Heights Park, and an area at the north end of El Porto beach. There was strong opposition to the El Porto location from meeting attendees, who cited the location's proximity to residences, distance from schools and the Teen Center, traffic and parking concerns, and impact on open space. Those not opposed to a skateboard park generally supported both the Marine Ave. Park and Manhattan Heights Park locations, noting their proximity to the Teen Center and Manhattan Beach Middle School, distance from residences, and low impact on existing activities and amenities.

Support for a skateboard Park was strongest when not funded by City tax dollars. Alternative funding sources include, community fundraising, grants from organizations such as the Tony Hawk Foundations and private sponsorships from local companies such as Skechers. A skateboard park could also be built privately in cooperation with the Manhattan Village Mall or similar company.

FINAL CONCLUSION OF FEASIBILITY STUDY

PUBLIC OUTREACH/INTEREST:

The public was noticed through ads and press releases in the Beach Reporter. A survey was administered via Open City Hall, two Community Input Meetings were held, and feedback was received via email and phone. Residences adjacent to potential sites were noticed and encouraged to attend meetings and provide feedback. Eighty-six people participated in the survey, 75 provided feedback via email, and....attended the community input meetings

Community input and discussions indicate support for one or more small skate-spot or skate-dot type facilities located at either Marine Ave. Park or Manhattan Heights Park. The project would receive more support if funded without the use of City dollars, located away from residences, and not built to be a regional destination.

CONCLUSION:

Staff recommends that the City Council discuss and provide direction on the Skateboard Park Update and Presentation of Community Outreach Findings by Stantec, AST.

**QUESTIONS
&
ANSWERS**

Linda M. Robb

From: Susan Harris <slh121@aol.com>
Sent: Thursday, September 03, 2015 8:04 AM
To: MB Skate Park
Subject: : Concerns re Proposed El Porto Skate Spots

I have lived in El Porto for over 30 years and am very concerned about the proposed El Porto skate spots. Please do not place one here!

The skateboarders already cause noise and safety problems on the Strand, parking lot, bike path, and even on our narrow streets around here. Encouraging more activity would only increase this activity to and from the "spots". This area is already very dense with people and cars due to the parking lot and our small house lots. The safety and noise are a major concern for residents, let alone the potential for increased crime.

The other proposed areas make much more sense. Manhattan Heights Park or Marina Avenue Park are built for physical activities and are further away from residents. We are already too congested in El Porto!

Thank you,

Susan Harris

El Porto Resident

Linda M. Robb

From: Kristina Burrows <Kristina@chamberlainteam.com>
Sent: Friday, September 11, 2015 11:26 AM
To: MB Skate Park
Subject: A skate Mom's suggestion

Hello-

I just read your article in The Beach Reporter. I believe the younger demographic is not aware that this is being proposed. Have you sent out flyers to the local schools? Or to the Parks and Rec departments to help spread the word? I was not even aware until my friend that works in the business sent me a face book message about the meeting earlier this week. I know my kids are not reading the paper or watching the news. Also, a lot of the skater kids do not have parents that are "in tune" with these things. (if that makes sense)

So just a suggestion. I am very "in tune" with the skater world. We travel down to Orange county at least 2x a week so they can practice. I would love this to go through. I would be happy help support this proposal in any way. This is my work email. If you want to contact me use this information:

Cell 310-465-3993

email kristina@sk8family.com

Thanks so much,

Kristina Burrows

Chamberlain Team Assistant

RE/MAX Estate Properties

Office: 310-802-2231

eFax: 310-872-5342

Email: Kristina@chamberlainteam.com

Office Hours: Monday-Friday 10:30 am- 2:30 pm

Alternately you may contact Heather at 310-283-9614 or

Wayne at 310-809-5458

Linda M. Robb

From: Peter Erling <perling@gmail.com>
Sent: Thursday, September 03, 2015 1:18 PM
To: MB Skate Park
Subject: AGAINST proposed skate park

I am responding to the proposed skate park in North Manhattan Beach - somewhere on 45th street.

I am vehemently opposed to this idea. Why is the city not putting their effort and attention to things that have been voted on and where supposed to be underway? Somehow new proposals are moving forward and old business has been stalled, ignored and delayed - specifically undergrounding. We voted AGAIN in 2009 to move forward, yet the city has managed to stall and delay without good reason!!!!

I am against this park today and forever!

Thank you for your attention.

Dr. Peter Erling

225 Rosecrans Place

310-503-5609

Linda M. Robb

From: Paul Mance <theupperdeck@aol.com>
Sent: Thursday, September 03, 2015 8:38 PM
To: MB Skate Park
Cc: Bob Sievers
Subject: Against skate park

To whom it may concern,
I am a former Police Officer & 100%
against a proposed skate park in El
Porto. This would be a horrible mistake that will attract individuals that will commit crimes and bring noise to a now
peaceful community.

Who's stupid idea is this?

You're asking for trouble and creating a area that will attract gang members and trouble makers to loiter and you won't
be able to get rid of them. The police department will be dealing with noise, fights, littering, drinking, loud music, drugs,
thefts, robberies, urinating, parking problems where parking is a problem already, and the crime list goes.

I want those crimes in front of my house, DON'T YOU!!!

This skate park would be a nightmare. I ask anyone in favor of this park to construct a skate park in front of your house
and deal with the element it attracts.

I want to live in a safe community for me and my family. There's is a good reason why we pay so much to live here. The
reason is IT'S SAFE!!!

Why is this city proposing a plan to attract an outside threat to my community? Who are you doing this for? Are you
doing it for the people who live here or some little trouble maker, who marks his territory with graffiti and yells gang
affiliations.

The residents that I have approached are outraged that someone would even consider a senseless attempt to be like a
Venice Beach. Watch the News and see the problems they are having.

Do you want to be like them? I Don't.

Listen closely to the taxpayers of Manhattan Beach. We know what we want and we know what we don't want. We
don't want a skate park.

Paul Mance
204 Gull Street Manhattan Beach
310 408-7525 cell

Sent from my iPhone

From: Robert Sikonia
To: Linda M. Robb
Subject: Begg Skatepark
Date: Wednesday, September 23, 2015 3:24:49 PM

Dear Linda,

How very nice to meet you and chat yesterday. Please thank the girl at the counter for her instructions to the survey. I did find it and could read some responses, but could not take it because I do not seem to have any "cookies"- nor do I want any. I do have a couple of Girl Scout Thin Mints in the freezer though.

I thought the survey was very biased and required choosing one of the 3 noted locations. Some of the directions said that you could not choose Polliwog. The site I would like to request for consideration is Begg parking lot -which is known to many as Polliwog. I think from the directions on the survey, people were not aware that other suggestions were still being accepted.

Wow! Things sure do get complex. I will therefore send or bring my suggestions and comments in to your office as soon as I type them up-but please count me in for Begg Skatepark! I think I will send this email to Mr. Leyman as well.

By the way, if you need to contact me, my email address is msikonia@verizon.net and my phone # is 310.376.6423-leave a message. Please *do not put my email or phone* on any public list though. However, i would like to know of upcoming meetings on the skatepark plan.Thank you.

Sincerely,
Mary

Linda M. Robb

From: donna-morrison <donna-morrison@mbdolphin.com>
Sent: Thursday, September 03, 2015 1:45 PM
To: MB Skate Park
Subject: EL PORTAL PROPERTY OWNER

AGAINST SKATEPARK!

Mr. & Mrs. Robert Leaf
210 El Porto St.
Manhattan Beach

Sent via the Samsung Galaxy Note® 4, an AT&T 4G LTE smartphone

Linda M. Robb

From: donna-morrison <donna-morrison@mbdolphin.com>
Sent: Thursday, September 03, 2015 1:43 PM
To: MB Skate Park
Subject: EL PORTAL PROPERTY OWNER

AGAINST SKATEPARK!

Sent via the Samsung Galaxy Note® 4, an AT&T 4G LTE smartphone

Linda M. Robb

From: Greg Morgan <greg@filmpunk.com>
Sent: Thursday, September 03, 2015 1:49 PM
To: MB Skate Park
Subject: EL PORTO PROPERTY OWNER

Hello,

My name is Greg Morgan. I live at 4230 The Strand. I am very strongly against the skateplark!!! It's ridiculous to have this in a residential area!! Who thought of this?!?!?

Greg

Linda M. Robb

From: April Marano <amarano@medsolve.org>
Sent: Thursday, September 03, 2015 1:31 PM
To: MB Skate Park
Subject: EL PORTO PROPERTY OWNER

Importance: High

To whom it may concern,

We understand that the city is contemplating locating a skateboard park in El Porto/North Manhattan Beach. As the owner of 221 Rosecrans Place/ 220 38th Street Unit 2, my husband and I are completely **against** this proposal. A skateboard park will attract the wrong element of people into our neighborhood and increase crime. We understand that the location for a skateboard park was first discussed for Pollywog Park, but also rejected. We want to remind the city that El Porto is a residential community, and we will not be treated like an ugly step sister.

Let us also remind you that El Porto is the north end gateway to the city of Manhattan Beach. Attracting the right people to our city is paramount to all other issues.

Please, NO SKATEBOARD PARK in north Manhattan!

Sincerely,

April Marano-Ford
John S. Ford MD MPH

Linda M. Robb

From: Nik Bringleson <niko2son@gmail.com>
Sent: Thursday, September 03, 2015 2:26 PM
To: MB Skate Park
Cc: Ja SoCal
Subject: El Porto Property Owner/ Against El Porto Skatepark

Hi,

My wife and I own our property at 120 Shell Street in El Porto. We are against the skatepark coming in.

Please feel free to contact us to discuss further if need be.

Thank you,

Nik Bringleson

(310)514-6003.

Linda M. Robb

From: Scott M. Jensen <scottjensenesq@hotmail.com>
Sent: Friday, September 04, 2015 10:00 AM
To: MB Skate Park
Subject: EL PORTO PROPERTY OWNER

Importance: High

Good morning,

As a new homeowner < as of March 31 < in North Manhattan Beach (aka El Porto), I am writing to raise my concerns about the proposed skate park.

I have a 10 year old, so I fully understand having a place for our kids to go to safely skate (or do any sport/activity) is important. However, when I chose to purchase a home in this area, it was because it is a residential neighborhood. The proposed site would diminish my property value and create the wrong environment for El Porto.

A new skatepark located in areas near existing baseball or sports fields would make sense both from quality of life and urban planning perspectives.

If this does proceed, please know there are many residents in the area who will be strongly opposed as I am, and we are happy to share our rationale in any public forums that are appropriate.

Thank you,
Scott

Scott M. Jensen
121 Rosecrans Place
Manhattan Beach, CA 90266 USA
+1 310-866-3534

Linda M. Robb

From: Kevin Wieland <landkev@gmail.com>
Sent: Thursday, September 03, 2015 8:47 PM
To: MB Skate Park
Subject: El Porto Property Owner

Although I think a skate park is not a bad idea, I don't think the bottom of 45th street is a good location. As a local property owner we already deal with traffic, loitering, and illegal activity in the parking lot and I believe adding a skate park would contribute further to an already challenged area. I would hope that the City could find a better suited location.

Kevin Wieland

225 39th St

Linda M. Robb

From: Brian Scott <bscott180@gmail.com>
Sent: Thursday, September 03, 2015 7:33 PM
To: MB Skate Park
Subject: EL PORTO PROPERTY OWNER

To whom this may concern,

I'm concerned. I recently received a pamphlet in the mail regarding the proposed El Porto skate park. My wife and I just purchased our first home at 117 Shell St. We chose this location for the proximity to the ocean, the wonderful sound of the waves and the close-knit neighborhood feel.

There's no disputing that if a skate park is built in between our home and the ocean, the audible disruption alone will be inevitable and obnoxious. Just the thought of skateboard trucks incessantly slamming against concrete at all hours of the day is enough to keep me up at night.

A skatepark for Manhattan Beach kids is a novel idea, but a skatepark on the beach in our beautiful neighborhood will attract all sorts of non-MB visitors who can easily skate, drive or bike down. Parking, crime, vandalism and noise are already problematic enough in El Porto without turning it into a tourist attraction for skaters, punks, transients and others frequenting LA's underbelly.

The skatepark pamphlet we all received in El Porto would have never gone to print if it was proposed in the hill or tree sections of Manhattan Beach.

Our quality of life and the value of our homes in the El Porto neighborhood will suffer as a result of the proposed skatepark.

Here's an 8 minute long video compilation of 2015's best skate park fights: <http://youtu.be/dwg8iI71NyU>

Not in my neighborhood.

Concerned El Porto Residents,

Brian & Katrina

Linda M. Robb

From: Michael Kreger <makreger@gmail.com>
Sent: Thursday, September 03, 2015 7:11 PM
To: MB Skate Park
Subject: El Porto Property Owner

To whom it may concern,

It has come to my attention that the community is considering a skate park in El Porto. As a resident and member of the community, I am in violent opposition to this idea. There are a number of issues that are presented with such a plan including the following:

- 1) increased traffic on Highland and Ocean, which are already not safe for pedestrians given lack of sidewalks and overuse given beach parking in the area (which itself should be undone)
- 2) increase in vandalism: skateparks run rampant with vandalism and not just to the skatepark alone, but the nearby areas
- 3) increase in violent crimes: skateparks are notorious for physical and violent criminal behavior
- 4) prevalence of drug use and under age alcohol consumption

El Porto is a quiet beach community that is already dealing with traffic and congestion issues associated with the ill placed public parking locations near the strand. Citizens of El Porto have to deal with streets that are less safe, less clean and the worry that our children are not safe given the lack of pedestrian infrastructure. Adding a skate park will only exacerbate this issue, further disrupting a peaceful area of town that is already treated like a second class citizen in Manhattan Beach. It is interesting to me that El Porto remains with power lines, has more beach side public parking and little to no safe walking areas for those in the area relative to the South side of Manhattan Beach. The skatepark proposal is just one more way in which El Porto is being mistreated and the community being destroyed for the benefit of those outside of the area. I have posted below a few articles which demonstrate the issues that surround skateparks and the battle that good communities have to endure when these establishments are put in place.

<http://www.theblaze.com/stories/2015/04/30/man-breaks-up-skate-park-brawl-between-two-teens-but-what-you-see-flash-across-the-screen-in-his-right-hand-is-raising-eyebrows/>

<http://samuel-warde.com/2014/01/8-year-old-smokes-weed-drunk-skate-park-video/>

Sincerely,

Michael Kreger

229 Rosecrans Place

Manhattan Beach

Linda M. Robb

From: Stuartsackley@aol.com
Sent: Thursday, September 03, 2015 2:54 PM
To: MB Skate Park
Subject: el porto property owner

we are against the skate park.

stuart sackley
4108 the strand

Linda M. Robb

From: Paul Rothbard <prothbard@hotmail.com>
Sent: Thursday, September 03, 2015 2:51 PM
To: MB Skate Park
Subject: EL PORTO PROPERTY OWNER

To Whom It May Concern:

It has recently come to my attention that the City is considering the approval of a skatepark in the El Porto neighborhood, around 45th st. As a property owner at 4112 & 4114 The Strand, I want to be clear in my strong opposition to this proposal. With a parking lot already in front of our homes and a very busy pedestrian walkway, the addition of a skate park will only serve to exacerbate an already unsafe problem.

The strand walkpath is already over-run with unsafe skateboarders including motorized skateboards and very unsafe other skateboarders who have no concern for the safety of children. My 11 yr old nephew has serious scars from a fall he sustained due to the reckless behavior of skateboarders. In fact, the City of MB police are RARELY in N. Manhattan addressing the many problems associated with the parking lot including people who don't live in the neighborhood and are disruptive to a safe, way of life that much of the rest of Manhattan Beach is afforded. Building a skate park will only bring even more skate boarders to the area. And to expect that they will stay only in the skate park and not on The Strand or in the parking lot is unrealistic and pure folly. What the City should be more concerned with is appropriately policing the recreational areas we already have in our once-serene neighborhoods.

PLEASE DO NOT APPROVE ANY TYPE OF ADDITIONAL RECREATION ACTIVITY, INCLUDING A SKATE PARK, IN THE EL PORTO NEIGHBORHOOD.

Thank you,

Paul Rothbard

Linda M. Robb

From: Jim Benedetto <jim@gravity.com>
Sent: Tuesday, September 08, 2015 11:47 AM
To: MB Skate Park
Subject: EL PORTO PROPERTY OWNER

Hi Manhattan Beach City Hall -

I moved to Manhattan Beach a few years ago and am currently the owner of 4421 Crest Drive, right at the top of the hill on 45th.

The proposed skate park location at the bottom of 45th street will sit in direct line of sight of mine and all of my neighbors beach views. This, in addition to the general development, will directly impact our property values.

I grew up skating and know its a very fun thing to do, but I am strongly opposed to the 45th location. I would be willing to donate money for its development somewhere not directly blocking my ocean view. In the end I think any money donated would be significantly less than the property value decrease I would face if this gets approved.

Thanks

Jim Benedetto

CTO/Cofounder Gravity.com

4421 Crest Drive MB

310-924-5100

Linda M. Robb

From: Steve Gilmour <stevegilmour@yahoo.com>
Sent: Thursday, September 03, 2015 1:23 PM
To: MB Skate Park
Subject: El Porto Property Owner

I am emailing to voice my displeasure in hearing that a skate park is potentially going to be built in North Manhattan Beach/El Porto at the end of 45th St. My home is at 212 Seaview St, and while that's still a few blocks over, I'd rather not have to deal with the spill over effect that most skate parks generate. To place a skate park in a highly residential area makes little sense for zoning purposes and I feel that there are many other options not near so many residences. In my experience, skate parks often lead to loitering, underage drug and alcohol abuse, graffiti, and an element not wanted near family homes. I'm currently in the stages of starting a family, and I can't think of many things I'd less want than a skate park near my children. Also, in putting it at 45th st. (the border or the city), you are encouraging more people from other cities to use Manhattan Beach facilities.

Thanks in advance for listening to my opinion. I know these decisions aren't easy to make, but I think you'd find an overwhelming "no" vote if you asked local residents.

Sincerely,

Steve Gilmour

Linda M. Robb

From: m.millington4@gmail.com
Sent: Thursday, September 03, 2015 12:51 PM
To: MB Skate Park
Subject: El Porto Property owner

Hello,

My name is Manuela Millington and we live at 315 Gull Street, in El Porto. We are definitely against the building of a skateboard park in our neighborhood. The traffic getting to the parking lot is already a nuisance with car fumes and backed up cars on weekends and early mornings. The sound of skateboarders would add additional noise to a residential neighborhood along with more cars coming to the neighborhood. Commercial areas with baseball fields and tennis courts exist in our community and therefore that would be an area where recreation belongs. Not in this part of town.

Thank you,
Manuela Millington
Sent from my iPhone

Linda M. Robb

From: Tammy Olson <tammy.weir@gmail.com>
Sent: Thursday, September 03, 2015 2:29 PM
To: MB Skate Park
Subject: El Porto property owner

Hello,

We own two properties in El Porto and are very against the proposition of a skate park in El Porto. We are a residential area and feel like this skate park would introduce additional risks to our community. Thanks.

Mike and Tammy Olson

Sent from my iPhone

Linda M. Robb

From: Mr GP <pamplonico@yahoo.com>
Sent: Sunday, September 06, 2015 1:26 PM
To: MB Skate Park
Subject: El Porto Property Owner 220 Moonstone Wants NO skate park in my neighborhood

I am strongly against having a skate park in our neighborhood. For starters there are few children in the area so those using it will not be from our neighborhood. The space would be much better used for work out equipment like at marine.

Further the clientele that use a skate park tend to be loud and noisy often times fail to obey regulations. A skate park would have a huge negative impact to our neighborhood and I as well as all my surrounding neighbors are strongly against the skate park. I work on the 8th of September or I would be there to voice my strong opinion of no to the skate park.

Sincerely,
Greg Pousson
Home Owner at 220 Moonstone

Linda M. Robb

From: David Gurewitz <dmgbeachlaw@hawaii.rr.com>
Sent: Thursday, September 03, 2015 1:36 PM
To: MB Skate Park
Subject: El Porto Property Owner Against Skate Park in El Porto

Gentlepersons: I own the property at 126 El Porto St. I am against placing a skate park adjacent to 45th and the Strand (the "El Porto Location"). The El Porto Location is a residential area, not an area that currently has a park. The other 2 alternative locations, which are currently park uses, are much better suited than residential El Porto. As there is, there is a severe lack of parking for residents in El Porto, which will only be exacerbated by a skate park at the El Porto Location.

Moreover, the logic of putting a non-residential use in a residential area, when the City recently banned residential uses (i.e. vacation rentals) in residential areas, escapes me.

Please keep park uses in park areas.

David M. Gurewitz, Attorney at Law
P.O. Box 1267
Kilauea, HI 96754
(808) 828-6288
dmgbeachlaw@hawaii.rr.com

Linda M. Robb

From: John Rosso <jarosso1@gmail.com>
Sent: Thursday, September 03, 2015 7:44 PM
To: MB Skate Park
Subject: El Porto Property Owner against Skate Park

Dear Sirs:

I am a property owner at 213-215 Gull Street in El Porto. I am against the proposal to build a skate park in our residential neighborhood.

However I am not against having it in an industrial area or another area not zoned residential where it makes more sense.

Please keep me informed as to the status of future information pertaining to this proposal. Thank you for your consideration.

Sincerely,

John Rosso
310 649 0955
Jarosso1@gmail.com

Linda M. Robb

From: Peggy Malpee <pmalpee@aol.com>
Sent: Friday, September 04, 2015 11:10 AM
To: MB Skate Park
Subject: EL PORTO PROPERTY OWNER REGARDING THE PROPOSED SKATEBOARD PARK

To Whom It May Concern:

AS AN EL PORTO PROPERTY OWNER, I AM AGAINST THE PROPOSED SKATEBOARD PARK AT 45TH STREET IN EL PORTO FOR THE FOLLOWING REASONS:

1. **PROPERTY VALUES:** We currently house the largest parking lot in residential Manhattan Beach as well as a concession stand at the foot of 41st Street. These features have NOT increased our property values, for sure. In fact, we already live with excessive traffic because of that parking lot. In addition, our beach is a favored surfing spot, which also creates excessive traffic.

ANY OTHER BUSINESS OR SPORTS ACTIVITY WOULD FURTHER INCREASE TRAFFIC IN AN ALREADY DENSELY POPULATED AND HIGHLY VISITED AREA, THUS CONTINUING TO DECREASE OUR PROPERTY VALUES.

2. **LOCATION:** Furthermore, one of the complaints of our city's skateboarding parents is having a place for their children close to their homes, some of which live east of Sepulveda. Selecting a location that is at the farthest north and farthest west corner of Manhattan Beach is NOT the closest place for these budding skateboarders to visit.

SELECT A CENTRALLY LOCATED PIECE OF PROPERTY ON WHICH TO BUILD THIS FACILITY.

3. SAFETY: The proposed site for this skateboard park is virtually on the edge of darkness - -
- with the ocean on the west and the isolated bike path and factory on the north.

THE POSSIBILITY FOR POTENTIAL CRIME AGAINST OUR YOUTH IS REAL. HOW CAN ANYONE SUPERVISE OUR YOUTH IN THIS SETTING? JUST TAKE A LOOK AT THE RECENT BEACH CRIMES ON OUR POLICE BLOTTER AS WELL AS THE CRIMES AGAINST OUR YOUTH IN OUR PARK BATHROOMS. THIS ISOLATED AREA WOULD ONLY LEND ITSELF TO PREDATORS AND CRIMINAL ACTIVITY.

4. WHY EL PORTO?: As a residents of this area, I wonder WHY this location was even selected. Could it be that this proposed skateboard facility is in such disfavor with the majority of residents that El Porto (the once unincorporated step-child of our city) would seem like a perfect place to dump this ongoing controversy?

IF THIS REALLY IS AN IMPORTANT PART OF SERVING OUR YOUTH, THEN IT NEEDS TO BE CENTRALLY LOCATED. IN FACT, THE SKATEBOARD PARK IN EL SEGUNDO IS IN THE CENTER OF TOWN, AWAY FROM RESIDENCES, ADJACENT TO THE TEEN CENTER, THE SCOUT HOUSE, AND REC PARK. IN THIS WAY, IT IS WELL LIT AT NIGHT, WELL-SUPERVISED, AND A SAFE PLACE FOR THEIR YOUTH.

5. PROPOSED SOLUTION AND TEMPORARY MEASURES:

LIKE EL SEGUNDO AND HERMOSA BEACH, I PROPOSE YOU SELECT A SITE THAT IS CENTRAL TO OUR FAMILIES, IN A SAFE, WELL-LIT LOCATION, AND AWAY FROM RESIDENCES.

UNTIL THAT HAPPENS, WHY NOT USE A SHUTTLE SYSTEM (SOMEWHAT LIKE THE ONE FOR OUR SENIORS) THAT COULD BE AVAILABLE AFTER SCHOOL TO TRANSPORT OUR YOUTH TO EITHER EL SEGUNDO OR HERMOSA'S SKATEBOARD PARKS? LIKE ANY

AFTERSCHOOL PROGRAM, IT COULD BE FUNDED BY THE CITY AND THE PARENTS, THUS PROVIDING SAFE SKATING FOR THE CHILDREN UNTIL THIS IS RESOLVED.

I look forward to our City Council Meeting Tuesday evening to seek a solution to this problem.

Most sincerely,

peggy malpee

310.748.2165

Property owner of:

117 41st Street

115 41st Street

120 Moonstone

Linda M. Robb

From: PICKERELL, KIM A <kp1313@att.com>
Sent: Friday, September 04, 2015 10:15 AM
To: MB Skate Park
Subject: El Porto Property owner

Hello,

My name is Kim Pickerell, owner of the property at 225/227 Kelp St. I am sending this message to express my opposition to putting a skate park in our area. This will attract more traffic and crime to the area and is not desirable for a residential area.

I can be reached at 310-648-4733.

Sincerely,

Kim Pickerell

Linda M. Robb

From: Brenda Crosby <jbkkc5@gmail.com>
Sent: Thursday, September 03, 2015 6:01 PM
To: MB Skate Park
Subject: El Porto Resident

We are against the skate park in this area.

Thanks,

Jim and Brenda Crosby

113 El Porto St

Linda M. Robb

From: Laura Develle Atkinson <devellion@gmail.com>
Sent: Thursday, September 03, 2015 2:04 PM
To: MB Skate Park
Subject: El Porto skate park.

As home owners in El Porto at 224 Gull street, my husband and I are not in favor of a skate park in our neighborhood. Parking is already a difficult situation at best. Don't try to turn MB into Venice Beach please.

Cheers,
Laura Develle Atkinson
Louie's of Mar Vista, LA, CA
www.louiesofmarvista.com
North End Caffe, Manhattan Bch, CA
www.northendmb.com

Linda M. Robb

From: ppboone@roadrunner.com
Sent: Wednesday, September 09, 2015 2:58 PM
To: MB Skate Park
Subject: El Porto Skate Park

From the description I received from the city concerning an El Porto Skate Park:

“Parking is available in the large metered lot accessible at the west end of 45th street”

Please – this statement is misleading. In fact, the the overhead view of the lot sent with your “EL PORTO” sheet shows very few if any available spots near the proposed park (defined by a yellow diamond with star). Our beach is a wonderful resource used by an enormous number of people. Parking is UNAVAILABLE during peak usage periods. As I’m sure you know, the city if often forced to close the lot during peak usage periods to avoid gridlock in the lot. Anything that increases parking demand in the El Porto lot is, in my opinion, a mistake.

Peter Boone (ppboone@roadrunner.com)
4308 The Strand
90266

Linda M. Robb

From: Corina Sullivan <famsullivan@verizon.net>
Sent: Thursday, September 03, 2015 2:21 PM
To: MB Skate Park
Subject: El Porto skate park

To whom it may concern,

I just purchased a property and building a new home in El Porto. I oppose the development of a skate park. A skate park should be built only next to or within a park like polliwog or marine park.

There is already no parking in El Porto. A skate park will make parking impossible.

We strongly oppose a skate park in El Porto!

The Sullivan's

Sent from my iPhone

Linda M. Robb

From: Henry Alvarez <alvarezhv@yahoo.com>
Sent: Saturday, September 05, 2015 8:55 AM
To: MB Skate Park
Subject: Fw: Fwd: Skate Parks

On Wednesday, September 2, 2015 11:15 AM, Henry Alvarez <alvarezhv@yahoo.com> wrote:

Sent from my iPhone

Begin forwarded message:

From: Henry Alvarez <alvarezhv@yahoo.com>
Date: August 30, 2015 at 11:36:12 AM PDT
To: "mbskatpark@citymb.info" <mbskatpark@citymb.info>
Subject: Skate Parks
Reply-To: Henry Alvarez <alvarezhv@yahoo.com>

Dear City of Manhattan Beach,

I'm writing this email to voice my concern about placing a skate dot, path or spot at El Porto. My major concern is the increase noise and the potential traffic on The Strand. The Strand by El Porto has numerous of walkers, runners, and joggers. Many residents and visitors walk their dogs on The Strand. An increase of skateboarders traveling too and from the skate dot or spot would frighten the pets and interfere with the pedestrian walking path.

I don't oppose skateparks being built at Manhattan Heights Park or Marina Avenue Park. These two locations are built for physical activities and having a skatepark in those two locations would augment the sports offerings. These two locations are also further away from the residents.

El Porto already caters to local and out of town visitors, additional congestion and noise would disrupt the residents and interrupt the current environment.

Warm Regards,

Henry Alvarez
El Porto Resident

Linda M. Robb

From: Julie Manasfi <jmanasfi@gmail.com>
Sent: Thursday, September 10, 2015 11:23 AM
To: MB Skate Park
Subject: Fwd: MB skatepark locations

Please see below. Thanks so much.

Sent from my iPhone

Begin forwarded message:

From: Julie Manasfi <jmanasfi@gmail.com>
Date: September 10, 2015 at 11:07:48 AM PDT
To: "mbskatepark@citymb.com" <mbskatepark@citymb.com>
Subject: MB skatepark locations

To Whom It May Concern,

I write to give my input on the proposed Manhattan Beach skate park locations. I just completed the Leadership Manhattan Beach program class of 2015, live in Manhattan Beach and own multiple properties in Manhattan Beach (4416 Ocean Drive, 4418 Ocean Drive, 208 42nd Street and 210 42nd Street). I also help manage 4212 The Strand, 4214 The Strand and 4213 Ocean Drive. I have two kids in Manhattan Beach schools, 3rd and 4th grade at Grandview Elementary, who skate and would frequent the proposed park. I see the benefits of the skate park because my kids have frequented the skate parks in El Segundo and Culver City. Giving the kids a safe local place to skate is a wonderful goal that I wholeheartedly support.

That being said some sites are better than others for this project. My main concern is with the proposed El Porto location. I live and own 4418 Ocean Drive which is located at the corner of 45th Street and Ocean Drive, at the entrance of El Porto parking lot. With this location, I see first hand from my living room the folks going into the parking lot and the beach goes walking up and down 45th Street (with no side walk) from the bus stop on Highland to the beach and from the beach to the Chevron gas station to buy refreshments. My concern with the proposed El Porto Skate park location is twofold.

First, I am concerned for the safety of the skatepark children walking up to Chevron to buy drinks and walking to meet their parents who are picking them up when the lot is backed up. You can see this child pedestrian traffic in both the El Segundo and the Culver city skate parks. With no sidewalk on 45th street and a huge volume of cars entering the lot and making a right onto 45th street, I have no doubt this would pose a serious safety risk to our children. This risk is already present with children walking up from the beach and surf camps but the risks would be significantly increased if the skate park were placed there.

My second concern is parents trying to drop kids off at this location. Already you can observe parents dropping kids at the beach double parking every which way on 45th street, Ocean Drive and in the parking lot with kids darting between cars. In the summer weekends and some holidays the police stationed at the entrance of the lot control the illegal dangerous double

parking and loading and unloading of pedestrians. But when no one is stationed at the lot this is already a significant safety issue. This would be significantly exacerbated by a skatepark at this location.

In summary, while I support wholeheartedly a skatepark in Manhattan Beach, I think that the safety and congestion concerns that are present with the proposed El Porto location are significant and cannot be ignored. I am familiar with the other two proposed sites, Marine and Manhattan Heights. These locations seem to me to be a safer alternative to the El Porto location. I appreciate your time in advance. Please contact me if I can be of any help in bringing this project to fruition.

Julie Manasfi, Esq.
310-800-0071

Sent from my iPhone

Linda M. Robb

From: Jeff <jeffdavis.2001@gmail.com>
Sent: Thursday, September 03, 2015 10:45 AM
To: MB Skate Park
Subject: Fwd: Skate Park Design / Location Options

Subject: Skate Park Design / Location Options

El Porto: This is the least attractive option for the following reasons: 1.) Farthest away from most of the MB population = lowest utilization/public good, 2.) Parking is not "available" despite the lot – it is filled on most weekends by 11:00 AM or sooner and you must pay to park, 3.) Traffic – you have to either ride down the bike pathway, pedestrian walkway or a busy combination of streets to arrive at the park = accidents + liability to the City, 4.) Zero supervision by MB park staff, police or city employees.

Manhattan Heights Park: This is the most attractive option for the following reasons: 1.) Greatest access to population / public good, 2.) Most activities possible for family members of all ages, 3.) Sufficient parking, 4.) Large parks surrounding with ample bathroom access, 5.) Safe and secure environment.

Marine Avenue Park: This is the second most attractive option for the following reasons: 1.) Medium public access location, 2.) sufficient parking, 3.) Well lit secure area, 4.) large park with multiple family activities.

Best Regards,

Jeff Davis

Manhattan Beach

Linda M. Robb

From: vic schultz <vicschultz@hotmail.com>
Sent: Thursday, September 10, 2015 8:01 PM
To: MB Skate Park
Subject: local says no

the end of the strand at 45th st. would not be a good place for a small , unfenced and , most likely, unsupervised rec area. the city , now, doesn't really enforce " no bikes on the strand" rules. all they have done is put up some signage. why would we assume the city would be there to enforce noise abatement or any other infraction. skaters who can't find a parking spot in the lot will attempt to park in the neighborhood adding to congestion. those who would use the strand as an approach to the park will be using a walk a street and will be doing their tricks/jumps as they travel to the park. the noise from their wheels etc. scares many dogs. there is no benefit for locals since there are so few kids in the neighborhood and the location could invite out of towners to come to the area. use an existing park that is central to all residents.

Linda M. Robb

From: Janine Lizarde <beachlizardes@gmail.com>
Sent: Wednesday, September 09, 2015 8:25 AM
To: MB Skate Park
Subject: MB Skate Park

I'm not a huge fan of putting in a skate park in Manhattan Beach but if I had to pick an option, Marine Avenue Park (skating spot) is the best choice of the three that were mentioned.

Linda M. Robb

From: Chuck Wuller <chuck@wuller.com>
Sent: Wednesday, September 02, 2015 9:13 PM
To: MB Skate Park
Subject: neighborhood impacts

It is difficult to *quantitatively* rank the suitability of the three “top sites.” But it is easy to *qualitatively* rank the sites with respect to neighborhood impacts.

noise pollution (from most to least isolated from surrounding neighborhood; first is least impact)

- 1 El Porto
- 2 Marine
- 3 Manhattan Heights

ratio of land area for skate use to overall recreational area (smallest ratio is least impact; first is least impact)

- 1 El Porto
- 2 Marine
- 3 Manhattan Heights

parking, number of off street parking spaces (most spaces is least impact; first is least impact)

- 1 El Porto
- 2 Marine
- 3 Manhattan Heights

congestion from multiple use (fewest simultaneous uses is least impact; first is least impact)

- 1 El Porto
- 2 Marine
- 3 Manhattan Heights

separation from other uses, e.g. basketball, youth programs, senior programs, playgrounds, ..., of site (more separation is safest; first is safest)

- 1 El Porto
- 2 Marine
- 3 Manhattan Heights

If the City decides that a skate site is necessary, please keep the above factors in mind.

Charles Wuller
Manhattan Beach CA

Linda M. Robb

From: Chris Emanuel <chris@virtusco.com>
Sent: Thursday, September 03, 2015 2:46 PM
To: MB Skate Park
Cc: Amy Emanuel
Subject: NO skate park in El Porto

127 Shell Street owner. Family of 5. 3 kids (6,4,newborn).

Chris Emanuel
***Sent from my iPad
702.787.0123 x401 office
702.860.7788 cell

Linda M. Robb

From: Debra <dsuard@verizon.net>
Sent: Wednesday, September 02, 2015 9:43 PM
To: MB Skate Park
Subject: NOOOO! on the El Porto site proposal!

I find it difficult to believe that MB is even entertaining the thought that El Porto would be a consideration!!! Doesn't our city know El Porto better than the "attendees" do???

Good grief.

Debra Suard
124 Shell St., 90266

Linda M. Robb

From: Mark Gallon <eightpints@yahoo.com>
Sent: Thursday, September 03, 2015 4:18 PM
To: MB Skate Park
Subject: OBJECTION TO PROPOSED EL PORTAL SKATE PARK

Mark Gallon of 43rd Street and Strand is objecting strongly to a proposed skate park in El Portal parking lot area. In fact enforcement of existing posted no Skateboarding on Strand would be welcomed.

Linda M. Robb

From: Mdjasaitis@roadrunner.com
Sent: Friday, September 04, 2015 11:54 AM
To: MB Skate Park
Cc: Bob Sievers; Jan Jasaitis; Jurgis Jasaitis
Subject: Proposed El Porto Skate Park

Dear City Council Members,

I am writing you to protest the proposed El Porto Skate Park at the bottom of 45th Street. Our neighborhood is a RESIDENTIAL community. A skate park is in direct contrast, a COMMERCIAL entity, and would only encourage more traffic, noise, increased crime and activity in our quiet seaside neighborhood. Our property values would be affected negatively.

If you desire to build a skate park in Manhattan Beach to raise revenue for the city, then please consider a COMMERCIALLY zoned area. After all, in June 2015 your Council voted against "vacation rentals" because our neighborhood was zoned RESIDENTIAL, and to AVOID increased traffic, automobile parking, noise, and disruption.

Please vote NO on the skate park proposal in El Porto, bottom of 45th Street.

Thank you for your consideration.

Respectfully,

M. Dalia Jasaitis
205 Sea View Street
Manhattan Beach, California 90266
Sent via BlackBerry by AT&T

Linda M. Robb

From: Liz <eking7@verizon.net>
Sent: Saturday, September 05, 2015 9:51 AM
To: MB Skate Park
Subject: Proposed El Porto skatepark

Our names are Elizabeth and Jose Alvarez, 4113 highland ave, MB, 310-990-3977

We do not want a skate park in El Porto ! We have no parking as it is now. Makes sense to put it on marine avenue.

Thank you.

Sent from my iPhone

Linda M. Robb

From: Greg Moran <swamigreg@gmail.com>
Sent: Saturday, September 05, 2015 12:20 PM
To: MB Skate Park
Subject: proposed skate park

I am a second generation resident of El Porto, living in our family home built in 1959. I am not a 'nimby', luddite or an old fart who screams at passing cars. Although, that might be the thing that stops the speeders on our street. That's for another rant however.

I am against the proposed skate park for several reasons. We are a residential neighborhood, albeit in the armpit of the Chevron facility. There is a community here that would be negatively impacted by an enterprise with the scope of a skate park. Parking concerns, crowd control, hours of operation, EMT facilities and access, property values, trash, sewer and water concerns, security, access, crime and loitering, vandalism and traffic. There are more.

I have been a South Bay resident for decades and graduated RUHS; I've played baseball at local fields, golf the Lakes in ES, enjoy the bike path and beach, the piers, etc. We don't need another facility. We need the city council to honor the services they commit to and upgrade our infrastructure to bear the population that reside within the city.

Sincerely,

Gregory Moran
219 41st Street
Manhattan Beach CA
90266

Linda M. Robb

From: Suzanne Harris <sharris@harris-ginsberg.com>
Sent: Friday, September 04, 2015 1:56 PM
To: MB Skate Park
Subject: Re: Skatepark

Hello,

I am a property owner on 41st Street, between Highland and Ocean. I reside there and I have 3 tenants there as well.

The demographic in my neighborhood is mostly single professionals. I strongly oppose the plans for a skatepark at 45th or anywhere near my property. It will diminish property values and adversely affect my rental income, too.

I hope you will share these sentiments in an appropriate way.

Suzanne Harris

Suzanne Harris, Esq.
HARRIS-GINSBERG LLP
6420 Wilshire Blvd.,
Sixteenth Floor
Los Angeles, CA 90048
Tel: +1 310-444-6333
fax: +1 310 444-6330
sharris@harris-ginsberg.com

Pasadena Office
70 South Lake Avenue
Suite 1000
Pasadena, California 91101
Tel: +1 626-463-7081

Fellow, American Academy of Matrimonial Lawyers
Fellow, International Academy of Matrimonial Lawyers

Linda M. Robb

From: dbrolls <dbrolls@aol.com>
Sent: Friday, September 04, 2015 11:23 AM
To: MB Skate Park
Subject: RE: Skateboard Park at 45th Street - NO! - EL PORTO PROPERTY OWNER

I am a resident of El Porto and am very opposed to putting a skate facility at that location. The skateboarders already cause a lot of damage to the benches on the strand and attracting more would be a bad choice for our neighborhood. More congestion where it is already awful. Between cars parking and dropping off we can not stand more.

It would be a much better to put it in an area which is more accessible to people rather than the very farthest point to in the city. Maybe where there are already other sports facilities? And parking!

Please. No more traffic and congestion in the El Porto Lot area.

DAVID BEUGEN
4220 THE STRAND
MANHATTAN BEACH
310 749 9831

Sent from my Verizon Wireless 4G LTE smartphone

----- Original message -----

From: GLENN CUNNINGHAM <glenn.e.cunningham@usa.net>
Date: 09/04/2015 9:42 AM (GMT-08:00)
To: mbskatepark@citymb.info
Subject: Skateboard Park at 45th Street - NO! - EL PORTO PROPERTY OWNER

Gentlemen:

I am writing to express my concern about establishing a skateboard park (skate dot, path or spot) at 45th Street and The Strand. As a resident of the El Porto area (4305 The Strand), I am well aware of the congestion in the El Porto parking lot that will certainly be increased with additional traffic for skateboarders who can drive to the site. For those who cannot drive to the site, there is no good drop-off point that won't exacerbate the traffic in the El Porto parking lot or on local streets. Alternately, skateboarders are a hazard on both the bikeway and on The Strand walkway to dog walkers and regular walkers. These hazards will be increased with a skateboard park as proposed in El Porto. Finally, it seems a poor choice to locate a recreational facility that is meant to serve the whole city at the edge of the city where access is extremely constrained.

It seems to me that locating the park in a more centralized location would be

a much better situation from an access point of view, and locating it where other recreational facilities are located would make the most sense.

As an El Porto resident, I am not in favor of the skateboard park (skate dot, path or spot)option located at 45th Street and The Strand due to the increased traffic and congestion that it would bring to our already overburdened neighborhood.

Thanks for your consideration.

Glenn E. Cunningham
glenn.e.cunningham@usa.net
4305 The Strand
Manhattan Beach, CA 90266

Linda M. Robb

From: Heidi Walsh <jnhwalshfamily@hotmail.com>
Sent: Sunday, August 30, 2015 7:50 PM
To: MB Skate Park
Subject: Sept 8th meeting

Hi!

My husband, 4 boys and I have been at a few meetings and were planning on going Sept 8th but it is the Manhattan Beach Middle School back to school night so we won't be able to attend the skatepark meeting. I am writing to let you know because I imagine this will be a conflict to any middle schoolers who were planning on going to the skatepark meeting.

Hope it goes well,
Thank you,
Heidi

Linda M. Robb

From: Murphy/Perkins <murphyperkins@gmail.com>
Sent: Saturday, September 05, 2015 3:19 PM
To: List - City Council; MB Skate Park
Subject: Skate Board Park

Dear Council Members and MB Staff,

We paid \$20,000 for skate park consultants who took more than 6 months to tell us that "El Porto Beach is located near the Chevron refinery and the Hyperion sewage treatment plant." Apparently they got their information from Wikipedia which states: "El Porto is very close to the Chevron oil refinery and the Hyperion sewage treatment plant." Can we ask for our money back?

In fact Hyperion is almost 3 miles away and El Porto borders on the El Segundo Power Plant. In fact the NRG owned power plant also owns a good portion of the El Porto "park area" proposed for transformation into a skate park. The County of LA owns the rest of the land. I have spoken to a representative of the power plant and he said they are not disposed to tear out the landscaping and benches they recently installed and let a skate park be built there. I didn't speak to the county but their approval and Coastal Commission approval would be necessary if the ill-conceived park were to be built. I doubt those entities would want to take this beach land out of wide public use and convert it to use by a small percentage of Angelinos because our consultants thought it looked good to them.

Other issues with this site include: (1) sand is not a great surface to skate on (dangerous I would expect) (2) the border of the proposed park is directly adjacent to a bike path full of speeding bikes and would lead to injuries for sure and deaths quite probably (3) in the summer thousands of cars come down steep 45th St and adding skaters to that mix would be foolish and (4) this tiny pocket park is used by exercisers, children including toddlers, and bikers taking a break. This is not "extra" space but well used beach public property that would be totally obliterated by the planned skate park. This would be a bad idea even if you got the County, the Coastal Commission and NRG to approve it.

I took the City's "survey" but reluctantly because it was only a forced vote for one of three bad choices when the only good choice is to decide not to build any skate park in Manhattan Beach. We are a park and green space starved community. Polliwog Park is in real danger of losing a lot of its open space to school development. The day may come in the future when it is entirely devoted to

school facilities. Half of our remaining green land is Veterans Parkway (the tracks) and though it is a great addition to our town and a lovely jogging/dog walking path, it is not a traditional park.

It will be hard for Council to fight the compulsion to throw good money after the bad \$20,000 already over the dam. Please don't pour concrete over our precious remaining green space. Council has the power and I believe the duty to act as responsible stewards and preserve our parks for use by everyone.

Thanks,

Michelle Murphy

310-545-6751

Linda M. Robb

From: colleen Hinz <citygirlmama@yahoo.com>
Sent: Tuesday, September 08, 2015 3:28 PM
To: MB Skate Park; Sara Beth Muir
Subject: Skate park

Hello, my name is Colleen Hinz, Co-Captain for the 1600 block of 10TH. Street.

I am attending the meeting tonight to express my NO on building a skate park in East Manhattan Heights.

Already there is so much traffic congestion from before and after school drop off and pick up from the Middle School and all the Private Schools located on Manhattan Beach Blvd.

Parents park on 10th to avoid the traffic on Manhattan Beach Blvd. Children and car congestion is bad already.

If Manhattan Council has "extra" money to spend, tear down and build a new building on 11th Street next to Teen Center to house the Before and After School Children. The old building is old, small and hot and it isn't fair to the children who have to use it.

Parents pay a lot of money as it is for the service.

If a skatepark is to be built build it on the west side of PCH on the beach area mapped out for it.

Cement causes noise and children skating and extra foot patrol is too dangerous for anywhere in East Manhattan Heights.

Thank you for your time. Please let me know you received my email.

Colleen Hinz

3103725758

Sent from Yahoo Mail for iPhone

Linda M. Robb

From: BILL SCHINBINE <wildbills4444@msn.com>
Sent: Thursday, September 10, 2015 11:14 AM
To: MB Skate Park
Subject: skate park

I like the idea of a legal place for kids to play the park would be ok with me in El Porto
William Schinbine
228 42 nd st
MB 90266
310 415 0561

Linda M. Robb

From: Merelyn Vanole <meryrae@aol.com>
Sent: Sunday, August 30, 2015 2:23 PM
To: MB Skate Park
Subject: Skate Park

What can I say, I have been against a skate part in Manhattan beach ever since I can remember, but it appears inevitable!

1. Marine Avenue Park: Is already "packed" with Little League Fields, Soccer Fields, Basketball. etc. Marine Avenue itself is a traffic nightmare.

Parking along Marine (in the park) does not seem to be ample; thereby encouraging more jaywalking from the south side. More residential parking being used for the skate park access. Chosen location doesn't seem very accessible to users. Has anyone ever hit a ball that far? Please leave some unused open space in the

Park for the future. Wasn't Maine Avenue Park proposed once before for a Skate Board Park and defeated? Seems so.

2. Manhattan Heights Park: The plan shows a yellow star on the proposed location. What is the proposed skate board park replacing and will it be replaced? Perhaps a larger play area for children and picnic facilities would be more beneficial to the area. It is surrounded on all three sides by residential. Here again, residential parking being used for skaters. How long has it been since anyone as actually done something to this Park for the residents in the area?

3. El Porto: I would imagine here are going to be objections for any of these locations. This is one location that may even benefit the City. Increased parking

revenue? Probably need passes for this (25 cents for, what is it 6 min?). Actually, I think this is a great location (if there has to be one). Maybe even revenue for

local businesses "up the hill". Beach and ocean view. Wow! From the drawing, it doesn't seem like it will impact much of the Strand. Doesn't appear to impact

any on residential parking. I also believe that the skaters would feel special about this location not being so surrounded by other activities in the area. Make sense?

For what it's worth those are my comments. Thanks for listening. Merelyn Vanole, MB resident

Linda M. Robb

From: Stewart, Victoria <vls9975@lausd.net>
Sent: Thursday, September 03, 2015 7:51 PM
To: MB Skate Park
Subject: Skate park

I am opposed to the skate park. The area is already crowded with pedestrians and traffic. Weekends are dangerous on Ocean drive due to people looking for a parking spot. El Porto is already a high volume area for surfing. Building a skate park in this area would take away from the natural beauty of the beach. Build the park inland. What's next? Disney by the beach?

Victoria Stewart
Resident on Shell

Sent from my iPhone

Linda M. Robb

From: Janice Schultz <janicetaitschultz@gmail.com>
Sent: Friday, September 04, 2015 9:04 AM
To: MB Skate Park
Cc: Bob Sievers
Subject: Skate park in El Porto

To Whom It May Concern,

I oppose the placement of a skate park in El Porto for the following reasons:

1. El Porto does not have an abundance of family residences, and so, we have very few children living in El Porto. This means that the main users of a skate park in E Porto are most likely from out of the area. This will increase traffic in an area that already hosts non residents because of our beach parking lot.
2. El Porto is a high density area with very congested streets. There is increased traffic on our narrow streets because of the beach parking lot and the continued use of our area as a cut through to escape traffic on Highland. Adding a skate park will not improve our traffic problems, but rather add to them.
3. El Porto has a higher crime rate than other Manhattan Beach neighborhoods largely due to the easy access in and out (Rosecrans and Highland) and relative easy parking with the parking lot. We do not need to add another attractant to our neighborhood for the criminal element.
4. The current skateboard traffic that we do have is a reckless nuisance, They ride the Strand, zipping in and out of walkers. They jump curbs and ride the handrails on the staircases. Often they miss the jump and the skateboard flies unfettered down the Strand. Its dangerous. Placing the skatepark at the north end of the Strand, just invites more boarders to ride down the Strand creating more problems.

Please consider placing a skateboard park in an area that is central to Manhattan Beach and not on the periphery. Also using an existing central area will help keep the park accessible to all M.B. residents and discourage use from non residents. We have 3 existing large parks, that could easily handle a skate park. Polliwog Park, Bruce's Beach and Live Oak Park. If we need a skate park, let's use the designated park space we already have.

Thank you for your consideration,

Janice and Victor Schultz

Linda M. Robb

From: browkip1@verizon.net
Sent: Thursday, September 10, 2015 3:30 PM
To: MB Skate Park
Subject: skate park in ElPorto

El Porto is the part of the city it ignores until they want something--no xmas decorations, fancy crossings or some of the other amenities that south part of MB get. Now you want to add a skate park with all the negatives that come--extra (or less parking) depends on the way you want to look at it. We already have no parking and the city keeps adding restuarants that does not include parking on site. The extra people it would draw-not from Manhattan but other areas that won't necessarily enhance our property values. Tried to be at the meeting but did not realize that it was at Josslyn--however when we walked from there to dinner, I realized why the city is so anxious to build a skate board park--city hall and library grounds were full of skateboards and it made me nervous with all the steps and different levels--what's the liability to the city with that???

When you built the hotel, shops and center then on Ardmore, Morningside and Manhattan Beach Blvd-- a group of us wanted that to be a park with skateboarding--the parking lot would have been fine. As usual the city council wanted the revenue that it would bring in--now they want us to sacrifice our piece of mind and parking for YOUR skatepark. We even wanted the space that you sold and then reredted from Health Cities for the skatboard park. El Porto should be the last place you would even consider. I live at 4108 Highland and the parking is always a mess and people are always trying to find an extra spot for their friends that want to visit. Importing people from the Southbay areas is NOT A GOOD IDEA.

Roberta A. Brown and John A Brow
310545-2074

Linda M. Robb

From: Charles <charlessouthey@aol.com>
Sent: Tuesday, September 08, 2015 10:56 AM
To: MB Skate Park
Cc: Charles Southey
Subject: Skate Park Input Meeting

To whom it may concern,

I am resident of El Porto and strongly oppose the idea of a skatepark in a residential area. The idea of placing it in Polliwog was shot down because it would be too loud for the residents that are quite a distance away. Now you want to place it in a neighborhood. Not only will the sound echo off the buildings and concrete it will echo up the streets, impacting many many more residents than polliwog ever could have. In Hemesa Beach the sounds from the park can be heard a quarter mile away. Lastly, is the proposed area zoned for sports/athletics? Are you going to change the zoning?

Thanks for your consideration.

Best,

Charles
310-480-9835

Linda M. Robb

From: Craig McManis <cmcmanis1000@gmail.com>
Sent: Thursday, September 03, 2015 7:13 PM
To: MB Skate Park
Subject: Skate Park Objection

To Whom it may concern.

I would like to thank the city council for taking the time to give serious consideration to the residents concerns over at skatepark in El Porto. I have been a property owner in North Manhattan Beach (El Porto) since 1998 (220 SeaView Street) . I enjoy the area and object to the idea of a skate park being put into this residential community.

I will list my concerns here:

The Pacific Ocean the greatest playground in the world. Additionally, the El Porto surf break is a very popular surfing spot. These two natural wonders already draw enough people to create **traffic** and as a result there is a **lack of parking**.

Noise - Skate parks are inherently noisy. The click-clack of wheels and cheers will reverberating through the already densely populated neighborhood.

Property values. We are shortly going to be asked to dig deeper into our pockets to pay for under grounding the power lines. The rational is this will help property values. Then the city sticks a skate park in our backyard. This will have an adverse affect on our values.

Our two nearest neighbors Hermosa to south and El Segundo to the north have skate parks. Two points about these. First, both parks in commercial areas not in a residential area. Second, Proximity. The Hermosa park is 1.7 miles from Metlox and 6 minutes travel time according to google. The 45th street location is 1.7 miles and 8 minutes travel time, are kids really going to drive further just because it is in MB? Additionally the El Segundo park is only 1.8 miles from 45th street and only 6 minutes travel time. The point is people are going to travel to the nearest park. Do we really need (3) skate parks within less than 4 miles of each other?

If the purpose to build this is for the kids of MB, 45th is the last place we should build it. We should learn the lesson of Sand Dune park. Due it's popularity and parking the Sand Dune (another recreational area in a residential area) was overrun by non residence and cost too much to maintain. We had to fence it in a create a reservation system. In short this deprives all residence of this natural wonder.

The skate at 45th will be the same all the visitors will enjoy the park as they do the beach. Parking in El Porto is already a challenge due to the beach goers. Why add a skate park here? I look forward to hear the rationale for this location.

Thank you for taking the time to read.

Craig McManis

Craig McManis

Linda M. Robb

From: Clees, Joseph T. <Joseph.Clees@OgletreeDeakins.com>
Sent: Thursday, September 03, 2015 2:19 PM
To: MB Skate Park
Subject: Skate Park opposition

Hello. I am Joe Clees and the owner of 4206 Highland Ave. in El Porto. I vigorously oppose plans for a skate park in my neighborhood. Thank you. Joe

This transmission is intended only for the proper recipient(s). It is confidential and may contain attorney-client privileged information. If you are not the proper recipient, please notify the sender immediately and delete this message. Any unauthorized review, copying, or use of this message is prohibited.

Linda M. Robb

From: Tana Hausch <tanahausch@roadrunner.com>
Sent: Thursday, September 03, 2015 10:12 AM
To: MB Skate Park
Subject: Skate Park Questions

I have a few questions regarding the proposed park.

- 1) Why are we building a skate park in MB? What were the circumstances that this is now being considered? Were there signed petitions to put one in? Was it the idea of a city staff person? Can you please explain this?
- 2) Why is El Porto being considered as a possible location?
- 3) What kind of study was performed to make El Porto a possible location? Specifically parking? (please see my notes below on the current parking congestion at the El Porto parking lot.)
- 3) Isn't the El Porto proposed site owned by the County and not the City of MB?

I am against any Skate Park in Manhattan Beach. Further, your suggestion of a park in El Porto is not realistic. There is already congestion in the parking lot and in the community at the North End of MB. There is not enough parking to accommodate, beach goers, surfers and now skaters.

Sincerely,

Tana Hausch

Linda M. Robb

From: Wandamae <wmae1@verizon.net>
Sent: Thursday, September 03, 2015 12:19 PM
To: MB Skate Park
Subject: Skate park

We live in El Porto and purchased a home there because it was more quiet and had more character and charm than downtown. I am AGAINST building a skate park anywhere near the beachfront as you are asking for more skateboard traffic on the Strand and I have seen way too many accidents and near accidents between reckless skateboarders and people walking with the elderly and animals. The Strand is a residential area, and where you are indicating to build a skatepark is a residential area. You are looking at way too much traffic. Please build it by the park somewhere where it belongs...and instead apply that money to under grounding and making our streets more drivable....thank you.

Dean and Wandamae Lombardi
117 Rosecrans Pl.

Linda M. Robb

From: Robert Sievers <tradesurf@mac.com>
Sent: Thursday, September 03, 2015 2:33 PM
To: MB Skate Park
Subject: Skate Park--El Porto

We are trying to confirm whether El Porto is a proposed site for the skate park. Please get back as soon as you are able as many EL Porto residents are very concerned. Me included.

Best Regards,

Bob Sievers
Shorewood Realtors
(310) 977-7929

Linda M. Robb

From: Ruck Nicholls <ruckbrit@roadrunner.com>
Sent: Tuesday, September 01, 2015 11:27 AM
To: MB Skate Park
Cc: Deirdre Rinehart-Nicholls
Subject: SKATE PARKS-PROPOSED LOCATIONS

Here our thoughts:

LOCATION ONE: MARINE AVENUE PARK

Too far away for most MB kids to utilize, we would be spending money for surrounding community kids to use, AS IS THE CASE NOW!!

LOCATION TWO: MANHATTAN HEIGHTS PARK

Basically, the same thoughts and comments as Marine Ave.

LOCATION THREE: EL PORTO

Again, geographically non-U and non-central to MB proper.

SUMMARY

This MB skate park has to be CENTRALLY located within MB for MB kids to use.

THINK, Hermosa Beach Skate Park on Pier Ave-CENTRALLY LOCATED!

Surely, one of the MANY empty property sites along Sepulveda could be used for a SBPark?

These sites are at least central to MB.

Trust our thoughts and comments assist MB in the Skate Park quest?

This SBPark is essential to get the MB kids in central MB from NOT skate boarding on city streets.

What we don't understand with "No Skate Boarding" signs very prolific in MB, where is the law to ticket/cite these numerous infringements seen daily?

Sincerely,

Ruck & Deirdre Nicholls
12 Bermuda Court
Manhattan Beach, CA 90266-7240
Tel: 310 545 9480
Email: ruckbrit@roadrunner.com

Linda M. Robb

From: Beth <bmuir1112@aol.com>
Sent: Tuesday, September 08, 2015 3:19 PM
To: MB Skate Park
Subject: Skateboard Facility

Skate Park Locations

El Porto skate park location seems to be a safe location on the sand, no trees, and don't have to dig up dirt and grass. There is no traffic near the El Porto for a child to fall on the curb of the street or fly into the street.

Marine Avenue Park is not the best location for a skate park with traffic on the street and a parking lot for many people to their aerospace buildings.

Manhattan Heights Park skate park design shows next to the Community Building and Manhattan Beach Blvd., which is a racing street going fast. Replacing soil and grass with concrete takes away running around in bare feet, which feels good.

The echoing of cement carries a long way.

Thank you for giving us an opportunity to send a message.

Beth Muir
1642 10th Street
Manhattan Beach, CA 90266-6106

Linda M. Robb

From: kkmoore@roadrunner.com
Sent: Sunday, September 06, 2015 11:08 AM
To: MB Skate Park
Cc: citygirlmama@yahoo.com; BM10thstreet@aol.com
Subject: Skateboard Facility

We are opposed to the creation of a public skateboard facility anywhere in Manhattan Beach. It is simply incompatible with the peaceful enjoyment of a residential community. The adjoining residents would end up having to call police to supervise the facility, and police are desperately needed elsewhere to deal with burglaries and other more important matters. Such a facility would become a hangout. Parking in the city is already very tight.

After the outcry against a facility in Polliwog Park, it is absurd to propose putting one in Manhattan Heights Park, across the street from Polliwog, and much closer to residences.

If there is a need for a skateboard park in the area, it should be provided commercially, with appropriate zoning and hours of operation, far from residences, and paid for by the users of the facility. I am sure the proponents of the skateboard park would rather have it provided at public expense 375 feet from our bedroom window, but that is why we have City Government: to say NO to proposals that benefit a few and lower the quality of life for those who live nearby.

Thank you for the opportunity to express our views.

Kim Moore
Kevin Moore

1633 10th ST. MB

Linda M. Robb

From: GLENN CUNNINGHAM <glenn.e.cunningham@usa.net>
Sent: Friday, September 04, 2015 9:42 AM
To: MB Skate Park
Subject: Skateboard Park at 45th Street - NO! - EL PORTO PROPERTY OWNER

Gentlemen:

I am writing to express my concern about establishing a skateboard park (skate dot, path or spot) at 45th Street and The Strand. As a resident of the El Porto area (4305 The Strand), I am well aware of the congestion in the El Porto parking lot that will certainly be increased with additional traffic for skateboarders who can drive to the site. For those who cannot drive to the site, there is no good drop-off point that won't exacerbate the traffic in the El Porto parking lot or on local streets. Alternately, skateboarders are a hazard on both the bikeway and on The Strand walkway to dog walkers and regular walkers. These hazards will be increased with a skateboard park as proposed in El Porto. Finally, it seems a poor choice to locate a recreational facility that is meant to serve the whole city at the edge of the city where access is extremely constrained.

It seems to me that locating the park in a more centralized location would be a much better situation from an access point of view, and locating it where other recreational facilities are located would make the most sense.

As an El Porto resident, I am not in favor of the skateboard park (skate dot, path or spot) option located at 45th Street and The Strand due to the increased traffic and congestion that it would bring to our already overburdened neighborhood.

Thanks for your consideration.

Glenn E. Cunningham
glenn.e.cunningham@usa.net
4305 The Strand
Manhattan Beach, CA 90266

Linda M. Robb

From: Mary Sikonia <msikonia@verizon.net>
Sent: Friday, September 11, 2015 10:48 AM
To: MB Skate Park
Subject: Skatepark location suggestion - lower Begg parking lot

Dear Kanten Russell, Mark Leyman, Mayor Burton and Council, and MBUSD Superintendent,

Thanks for the excellent and informative meeting on the skatepark ideas on Tues. It was my first meeting on the subject. I am offering a new suggestion and some advantages for it.

I have lived in MB for about 50 years and can remember when Polliwog was a natural wetland. LaMarina School was there and constantly flooded. The land was and still is a flood control area owned by MBUD. There was a downturn in school enrollment and the District was in financial straights. They sold off Manhattan Heights School and wanted to sell off others. That's another story though. Meanwhile, the City stepped in to help, leased the Polliwog area from the school District for a small fee, and spent City money to develop playing fields for the children, lights, maintenance and eventually evolving it into the wonderful park that it is today. I just love how it is and how the City and the Schools worked together in maintaining and using the land today. Of course, I am still the taxpayer no matter who spends the money, but it is well spent for the most part.

WHY A SKATEBOARD PARK IS NEEDED-

I have noticed through the years that when kids were playing baseball, basketball, tennis, football, soccer, etc in the streets, the city/schools stepped in to provide play areas for these sports and education/coaching on safety, skills, rules of the game, etc. Many youngsters today skateboard on our streets and it is very dangerous for them, pedestrians and cars. There have been many accidents and near misses. Our children need a place to skateboard without traffic worries. The City can provide the place and the Schools can provide the skateboard classes, just as they do for surfing, swimming, football, soccer, tennis, etc. The city rec. dept. can also provide after hours classes and skateboard camps, etc on a more permanent basis than at Heights Park. Who knows, maybe we can develop some awesome teams as in other sports!

The important part here is safety, and an athletically adequate place to learn board basics and etiquette for our children. Skateboarders are athletes and learn life long skills that are used in surfing, snow skiing, snow boarding and other areas. Why not teach them the basics now?

WHERE-BEGG PARKING LOT-OFF PECK AT BOTTOM OF HILL

I hope that you will consider the location of the parking lot between the old Begg Middle School and the Begg Pool. (By the way, the current Begg Pool has and continues to serve a very important role in teaching our little beginning swimmers.) That parking lot is a mess and the land is not adequately used on a permanent basis. There is often trash, etc there. Some parking could be left for the childcare and rental times, but not all of it is necessary for parking.

SOME GREAT ADVANTAGES TO BEGG LOCATION

It is in the Polliwog Complex with easy access for MBMS classes.

It is within Polliwog Park for park rules and regulations.

It does not back up to any residential homes-so hopefully no NIMBY complaints

It is already paved, will not take up any green space.

There is car access off MB Blvd onto Peck and should not cause traffic congestion.

It is centrally located for many kids to walk to.

Bathrooms/drinking fountains could be in one of those blgs. at Begg or in park.

Seating could be incorporated into the hill.

Much more room for an adequate. skatepark than any of the other suggested locations.

Little spots and dots are cute-but our kids deserve a real skate park.

Could include some artwork/skate fixtures for a cool attractive park.

I hope you will look into this location as it has some great advantages. I have been in the city long enough to know that a skatepark has been in the city plans in excess of 20 years-but no action in spite of kids letters and requests. Generations of kids grow up and have to move on with other of life's situations. I sure hope that the idea finally becomes real this time. Let the shovels begin in a couple of months and lets open the beauty park for our kids next fall.

Someone came up to me after the meeting and said that MB should bus all skateboarders to El Segundo or Hermosa. Some one else told me that it was just one more attraction for "riff raff" and problems for the city. I happen to disagree, but I know that we all have to respect each others opinions and work together for a solution. Our kids are not "riff raff" and MB should not have to send them to another city to skate. Mr. K. Russell has some great ideas. Let's all drop in and "board" together on this. Isn't that the way we roll?

Sincerely,

Mary

PS. I am not much at emailing and I know I am too wordy-but would you please forward this to the Mayor, Superintendent and Ed Foundation. I'll bet they could find the funds to build and this could be a great collaborative project for our kids and our city! Let me hear from you.

Linda M. Robb

From: Mary Sikonia <msikonia@verizon.net>
Sent: Sunday, September 13, 2015 2:29 PM
To: MB Skate Park
Subject: Skatepark Suggestion

Dear Mr. Russell and Mr. Leyman,

I have tried to terse up the wordy letter I tried to send you the other day. Hope it helps and I do hope the kids actually get a skatepark this time. Let me know about up coming meetings and I will do my best to attend. I tried to take your survey, but couldn't figure it out so will ask one of the Grands when I see them. Following is my letter. Thanks.

Mary

Everyone enjoys Polliwog Park. It evolved through collaboration of our City and MBUSD to meet diverse needs. Youngsters needed a place to play/learn football, baseball, soccer, etc. rather than on our streets. Safe places were built, even for dogs.

We have another need. We have all seen youngsters skateboarding on streets. There are accidents and near misses for boarders, pedestrians and drivers. Young skateboarders need a safe place for MBUSD to teach PE board basics like safety, etiquette, skills.

May I suggest part of the Begg parking lot as a small skateboard site. Some advantages:

- It's in the Polliwog Complex-easy access for MBMS classes
- In Polliwog Park for park rules, regulations, bathrooms- away from traffic
- Could include some artwork/skate fixtures for a cool, attractive park
- Does not back up to residential areas-may improve real estate value
- An improvement to current underused parking lot and trash
- Already paved-will not take up any green space
- Existing car access-MB Blvd. to Peck-no traffic congestion
- Centrally located-kids can walk to after school for park classes
- Seating easily incorporated into hill-grandparents could enjoy
- More room for an athletically adequate skatepark than cute spots,dots

A skatepark has been in the city plans in excess of 20 years-but no action regardless of generations of kid's letters, petitions and requests for a safe place to board.

Email mbskatepark@citymb.info or mmatthews@mbusd.org to share your good ideas. This time, let's all drop in, board together and grind out a safe skatepark to educate our awesome kids. Let the shovels begin and let's have classes there by next fall. Thank you.

WE WANT YOUR INPUT

SKATE PARK SIZE/DESIGN OPTIONS

DOT

- Skate Dots can support 3 to 5 users, one at a time.
- The Skate Dot is the smallest skateable space possible.
- Dots are always a single structure - usually incorporated into a sidewalk or paved open space.



SPOT

- Skate Spots can support 5 to 8 users, one at a time.
- Ranges from small skateable elements integrated into the existing landscape to larger areas that can accommodate up to a dozen riders, typically comprised of several street terrain elements
- Up to 1,500 square feet in size
- Can be integrated into existing parks as "additional playgrounds" since essentially that is what they are; areas for kids to play



PATHS

- Networks of skateable paths and existing routes which are skate friendly
- Integrated into a community's transportation plan or existing park pathways
- Provides routes for skaters/cyclists to venture to higher challenging spots



SKATEABLE ART

- Skateable Art is a creative structure that is designed and built specifically to be "skateboarding friendly."
- Most skateable art features forms that are compelling to a broader pedestrian audience. In some cases the public may be unaware that the form is intended to attract skateboarders.
- Skateable art is usually commissioned specifically for a site though some companies offer these pieces as catalog products.



**WE WANT YOUR
INPUT**

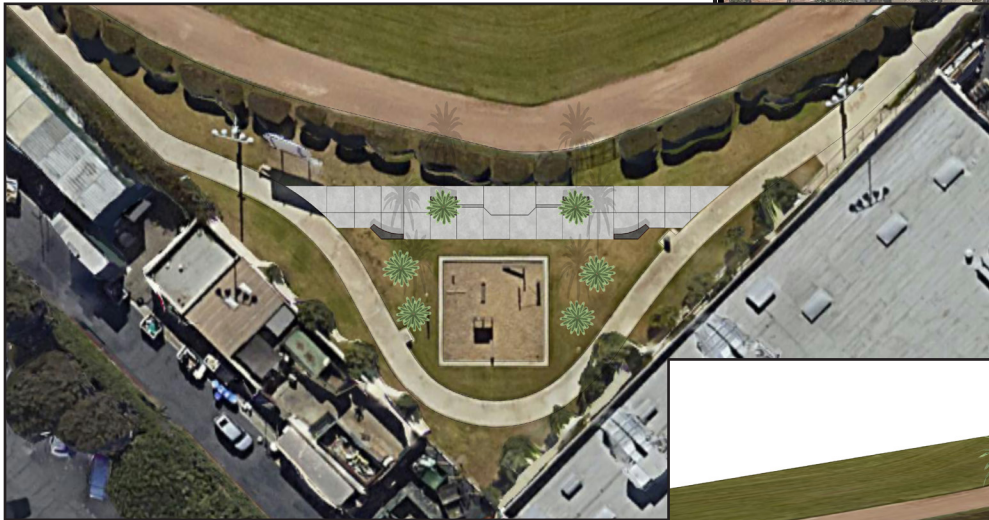
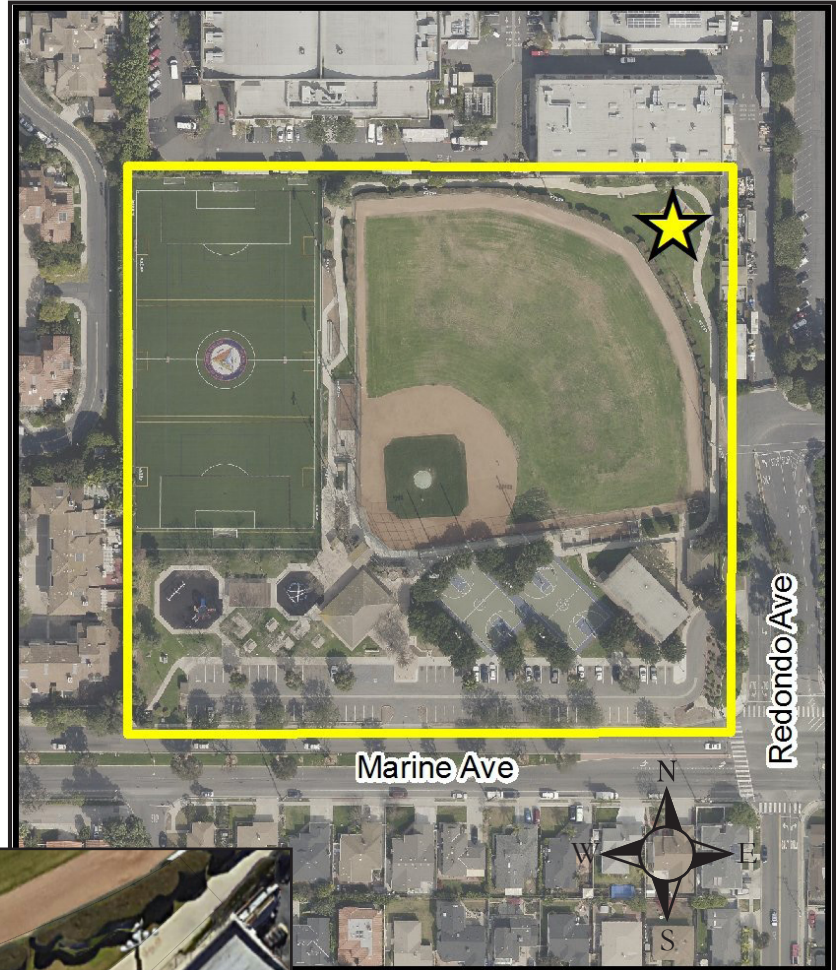
SKATE PARK LOCATION

MARINE AVENUE PARK

Marine Avenue Park is located on Marine Avenue at Redondo Ave. It is adjacent to Manhattan Beach Studios, Northrop Grumman and Marine Sports Complex.

This park encompasses just over 7.5 acres and is a favorite spot for young children's birthday parties and family gatherings. Facilities include an off-leash dog run, full-size baseball field, turf soccer field, two basketball courts, racquetball courts, exercise area, picnic tables, children's play areas and a small recreation activity building, restrooms and drinking fountains.

Ample parking is available in the lot bordering Marine Avenue.



**WE WANT YOUR
INPUT**

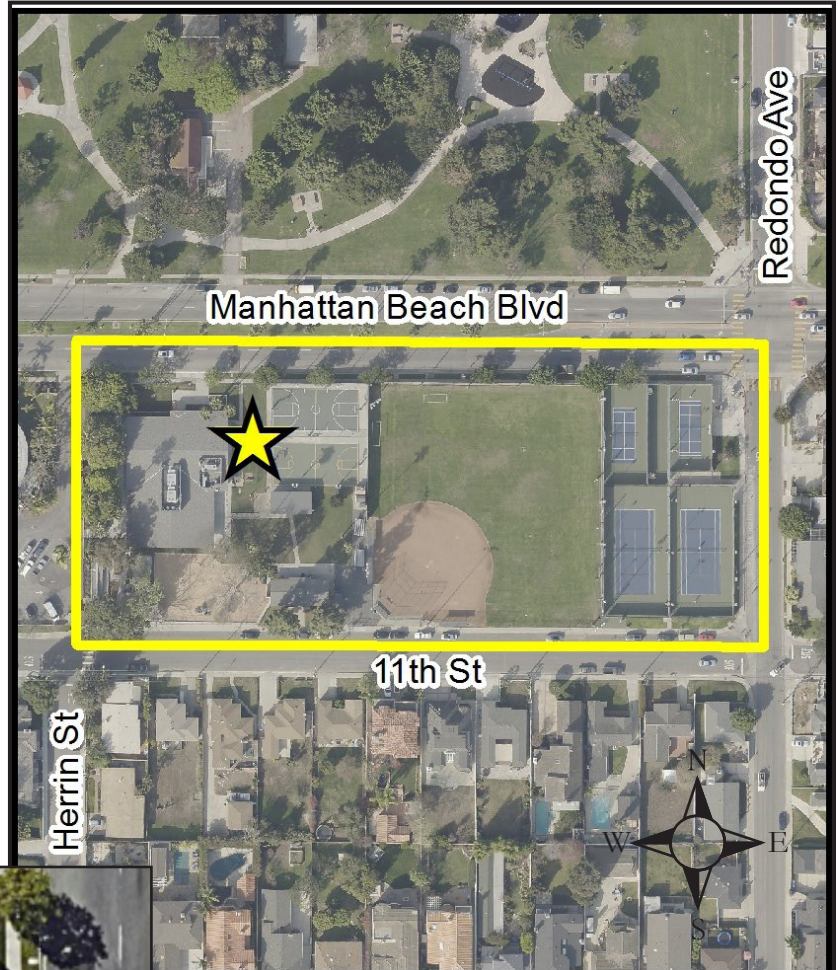
**SKATE PARK
SIZE/DESIGN
OPTIONS**

MANHATTAN HEIGHTS PARK

Manhattan Heights Park is located across Manhattan Beach Boulevard from Polliwog Park. This park encompasses almost 4 acres and is a popular site for social, informal family gatherings. Facilities include: community center, lighted athletic field, tennis courts, paddle tennis courts, basketball courts, horseshoe court, small children's play area and picnic facilities.

Manhattan Heights Community Center is home to the After School REC Program, Teen Center and a Senior Citizens' Club and is available to the public for meetings, parties and other gatherings.

Parking is available in an adjacent lot and along Manhattan Beach Boulevard, Redondo Avenue and Eleventh St.



**WE WANT YOUR
INPUT**

SKATE PARK SIZE/DESIGN OPTIONS

EL PORTO

El Porto Beach is located on the Northern border of Manhattan Beach near the Chevron oil refinery and the Hyperion sewage treatment plant and is protected under the State Park System.

The beach is staffed by LA County Lifeguards and features volleyball courts, restrooms and showers.

Parking is available in the large metered parking lot accessible at the west end of 45th Street from Highland Avenue.



TO:

Parks and Recreation Commission Members

FROM:

Mark Leyman, Parks and Recreation Director

SUBJECT:

Salute to the Troops Event and Community Sunscreen Lotion Dispensers (Parks and Recreation Director Leyman).

RECOMMENDATION:

Staff recommends that the Parks and Recreation Commission discuss the Salute to the Troops event and community sunscreen lotion dispensers to gather information and provide recommendations to the City Council.

FISCAL IMPLICATIONS:

There is no fiscal implication associated with this request.

BACKGROUND:

At the October 20, 2015 City Council meeting, the City Council approved two discussion items for the Commission to discuss: the Salute to the Troops Event and community sunscreen lotion dispensers.

DISCUSSION:

The Parks and Recreation Commission requested permission to discuss the Salute to the Troops Event so they may begin planning for the 2016 event, and the sunscreen lotion dispensers to evaluate a possible pilot program within the community (Attachment 1).

Salute to the Troops

The Commission would like to continue in their planning and support of the Salute to the Troops event, and therefore would like to begin discussions now for the 2016 event.

The Commission will continue to provide outreach for sponsorships and has proposed a 2016 event date of Sunday, July 3, 2016. For the 2015 event, the Commission raised over \$20,000 in sponsorships, which covered all of the event expenditures.

Sunscreen Lotion Dispensers

The Commission would like discuss and explore options for City Council consideration of a sunscreen lotion dispenser pilot program in the community. The Commission will research the possibility of installing the dispensers at elementary school and various locations in the City. Research will include costs, number of dispensers and sponsorship to pay for ongoing expenses.

CONCLUSION:

Staff recommends that the Parks and Recreation Commission discuss the Salute to the

Troops event and community sunscreen lotion dispensers to gather information and provide recommendations to the City Council.

Attachment:

1. Request to Discuss Salute Sunscreen Memo

**CITY OF MANHATTAN BEACH
MEMORANDUM**

TO: The Honorable Mayor and Members of the City Council
c/o – The City Manager Mark Danaj

FROM: Thomas E. Allard, Chairperson *Thomas E Allard*
On behalf of the Parks & Recreation Commission

DATE: October 8, 2015

SUBJECT: Salute to the Troops Picnic & Concert

The City of Manhattan Beach Parks & Recreation Commission seeks the Mayor and City Council's permission to once again celebrate our Veterans and those currently serving in our military, with a concert and picnic in Polliwog Park.

We propose that the Commission again do all the planning and gathering of sponsorships for the proposed event to be held Sunday July 3, 2016.

Thank you for agendizing this matter and your consideration of our request for direction.

Should you have any additional questions please advise us at your convenience.

**CITY OF MANHATTAN BEACH
MEMORANDUM**

TO: The Honorable Mayor and Members of the City Council
c/o – The City Manager Mark Danaj

FROM: Thomas E. Allard, Chairperson *Thomas E. Allard*
On behalf of the Parks & Recreation Commission

DATE: October 8, 2015

SUBJECT: Community Sunscreen Lotion Dispensers

The City of Manhattan Beach Parks & Recreation Commission seeks the Mayor and City Council's permission to research the possibility of installing Sunscreen Lotion dispensers in various locations throughout the City. Research is to include, costs, possible number of dispensers, locations and sponsors to pay for and maintain dispensers, plus ongoing expenses.

Thank you for agendizing this matter and your consideration of our request for direction.

Should you have any additional questions please advise us at your convenience.



City Hall 1400 Highland Avenue Manhattan Beach, CA 90266-4795

Telephone (310) 802-5000 FAX (310) 802-5001 TDD (310) 546-3501

NOTICE OF COMMUNITY INPUT MEETING

SKATE DOT, SPOT, PATH - LOCATION, DESIGN

When: Tuesday September 8, 2015 from 6:00 – 8:00 PM

**Where: Joslyn Community Center
 1601 Valley Drive
 Manhattan Beach, CA 90266**

The City of Manhattan Beach held a Community Input Meeting on August 6, 2015 to receive input on possible location, type and design of skateboard spots, dots and pathways. At the meeting, Skate park designer, Kanten Russell from Stantec’s Action Sports Team provided a “Skate Park 101” overview and facilitated discussions to receive community input on possible skateboard Spot/Dot/Run locations, sizes and designs. Potential skateboarding locations were identified by attendees for further review. The top locations, along with type of skate surfaces and designs will be presented at the Community Input Meeting on September 8, 2015.

It is important that your voice is heard! There are a variety of ways to share your input:

- 1) Attend the upcoming meeting to provide your input.
- 2) Take the [Online SURVEY](http://www.citymb.info/opencityhall) : at: www.citymb.info/opencityhall.
- 3) E-mail us your input: mbskatepark@citymb.info
- 4) Call us to share your input: 310-802-5448

The top sites identified for further review for a skateboard Spot/Dot/Run are:

(Please see diagrams and descriptions of site options attached)

1. Marine Avenue Park – 1625 Marine Avenue – Two potential locations
2. Manhattan Heights Park – Two potential locations
3. El Porto– One potential location

Based on input received in this meeting, the Committee will make recommendations regarding the feasibility of developing skateboard Spots/Dots/Runs to the Parks and Recreation Commission on Monday, October 26, 2015 in the City Council Chambers, 1400 Highland Avenue.