

## City Council Adjourned Regular Meeting

### Environmental Sustainability Study Session

Wednesday, January 31, 2018

5:00 PM

City Council Chambers



**Mayor Amy Howorth**  
**Mayor Pro Tem Steve Napolitano**  
**Councilmember Nancy Hersman**  
**Councilmember Richard Montgomery**  
**Councilmember David Lesser**

#### Executive Team

Bruce Moe, Interim City Manager  
Quinn Barrow, City Attorney

Derrick Abell, Police Chief  
Steve Charelian, Acting Finance Director  
Robert Espinosa, Fire Chief  
Stephanie Katsouleas, Public Works Director  
Mark Leyman, Parks & Recreation Director

Anne McIntosh, Community Development Director  
Liza Tamura, City Clerk  
Sanford Taylor, Information Technology Director  
Teresia Zadroga-Haase, Human Resources Director

#### **MISSION STATEMENT:**

**Our mission is to provide excellent municipal services,  
preserve our small beach town character, and enhance the quality of life for our  
residents, businesses and visitors.**

## MANHATTAN BEACH'S CITY COUNCIL WELCOMES YOU!

*Your presence and participation contribute to good city government.*

*By your presence in the City Council Chambers, you are participating in the process of representative government. To encourage that participation, this agenda provides an early opportunity for public comments under "Public Comments," at which time speakers may comment on any matter within the subject matter jurisdiction of the City Council, including items on the agenda.*

*Copies of staff reports or other written documentation relating to each item of business referred to on this agenda are available for review on the City's website at [www.citymb.info](http://www.citymb.info), the Police Department located at 420 15th Street, and are also on file in the Office of the City Clerk for public inspection. Any person who has any question concerning any agenda item may call the City Clerk's office at (310) 802-5056.*

*Meetings are broadcast live through Manhattan Beach Local Community Cable, Channel 8 (Chapter Spectrum), Channel 35 (Frontier Communications), and live streaming via the City's website.*

*In compliance with the Americans With Disabilities Act, if you need special assistance to participate in this meeting, you should contact the Office of the City Clerk at (310) 802-5056 (voice) or (310) 546-3501 (TDD). The City also provides closed captioning of all its Regular City Council Meetings for the hearing impaired.*

## CERTIFICATION OF MEETING NOTICE AND AGENDA POSTING

*I, Liza Tamura, City Clerk of the City of Manhattan Beach, California, state under penalty of perjury that this notice/agenda was posted on Thursday, January 25, 2018, on the City's Website and on the bulletin boards of City Hall, Joslyn Community Center and Manhattan Heights.*

## BELOW ARE THE AGENDA ITEMS TO BE CONSIDERED.

### A. CALL MEETING TO ORDER

### B. PLEDGE TO THE FLAG

### C. ROLL CALL

### D. PUBLIC COMMENTS (3 MINUTES PER PERSON)

*Speakers may provide public comments on any matter that is within the subject matter jurisdiction of the City Council, including items on the agenda. The Mayor may determine whether an item is within the subject matter jurisdiction of the City Council. While all comments are welcome, the Brown Act does not allow City Council to take action on any item not on the agenda. Each speaker may speak for up to 3 minutes.*

*Please complete the "Request to Address the City Council" card by filling out your name, city of residence, the item(s) you would like to offer public comment, and returning it to the City Clerk.*

**E. GENERAL BUSINESS**

1. Discussion and Approval of Environmental Work Plan for 2018-2020  
(Community Development Director McIntosh).

[18-0033](#)

**APPROVE**

Attachments: [2018-2020 Environmental Work Plan](#)  
[State Lands Commission Letter to City Re Sea Level Rise Assessment](#)  
[California Coastal Commission Sea Level Rise Policy Guidance Cover](#)  
[PowerPoint Presentation](#)

**F. ADJOURNMENT**



**Agenda Date:** 1/31/2018

---

**TO:**

Honorable Mayor and Members of the City Council

**THROUGH:**

Bruce Moe, Interim City Manager

**FROM:**

Anne McIntosh, Director of Community Development  
Dana Murray, Environmental Programs Manager

**SUBJECT:**

Discussion and Approval of Environmental Work Plan for 2018-2020 (Community Development Director McIntosh).

**APPROVE**

---

**RECOMMENDATION:**

Approve Environmental Work Plan for 2018-2020.

**FISCAL IMPLICATIONS:**

No fiscal implications associated with the recommended action at this time. Although, the City may consider hiring a consultant to help administer some of the long-term planning projects such as the creation of a Sustainability Plan and Local Coastal Plan update. Consideration can be given to expand the scope of work for these projects to ensure the City receives comprehensive studies and reports. A budget adjustment may be required to complete the full scope of work. Staff will have more information once the Environmental Task Force is formed and City Sustainability Goals are identified.

**BACKGROUND:**

Manhattan Beach has a long history of environmental leadership, policy, and stewardship, both as a community and as a city government. The vision for the sustainability movement in the City came from the original Environmental Task Force “to unite the community in a comprehensive effort to promote sustainable living in the City of Manhattan Beach.” To guide action on and establish sustainability goals, the City developed the 2008 Green Report, 2012 Environmental Action Plan, and Climate Action Plans. In addition, the City’s 2015 Strategic Plan included Environmental Stewardship as essential to the continued success of the City and its community. The City’s Environmental Stewardship Governance Activities include: 1. proactively reviewing

changes in environmental stewardship best practices; and 2. identifying leadership opportunities for environmental stewardship.

In August 2017, Dana Murray became Manhattan Beach's Environmental Programs Manager and presented this Environmental Work Plan to Council November 7, 2017. Under her environmental leadership, we propose that the City put together a new Environmental Sustainability Task Force composed of multi-departmental city staff, city council members, and community leaders. Meeting regularly throughout 2018-2019, this Task Force will assess and update the city's Environmental Sustainability Goals, including the development of a Sustainability Plan for the City.

**DISCUSSION:**

The City's Environmental Programs Manager prepared an Environmental Work Plan in November 2017 for City Council's further discussion that outlines the policy focus for the next two years, as well as long-term planning elements to create a Sustainability Plan for the City.

The Work Plan is provided as an attachment to this staff report, for the City Council to further discuss (Attachment 1). If the Work Plan is approved by the City Council, once formed, the Task Force will identify and describe City environmental accomplishments, assess which sustainability goals are in progress, and identify new environmental and sustainability goals and actions to pursue over the next five+ years, as recommended by Council on November 7, 2017.

The 2018-2020 Environmental Work Plan Long-term Sustainability Planning items include:

1. Forming an Environmental Task Force
2. Assessing and describing the City's last 10 years of environmental achievements
3. Increasing City Accountability and Measurements with a City Sustainability Reporting Tool
4. Developing the City's Environmental Sustainability Plan and Goals, for adoption into the City's General Plan
5. Creating the City's Community and Municipal Climate Action Plan
6. Identifying priority areas for environmental action and forming sub-committees

In addition to the six long-term sustainability planning processes above, key topical areas of Manhattan Beach's 2018-2020 environmental work will include: building climate change resiliency in the City, performing a sea level rise vulnerability assessment and adaptation planning, exploring the City's renewable energy purchasing through joining a Community Choice Aggregation, continuing to reduce plastic pollution, enhancing our City's water conservation and management, and mitigating climate change through actions identified in our Climate Action Plan and Council directives.

The City's Environmental Sustainability Program should remain nimble to engage on and incorporate areas of emerging concern or opportunities. The Work Plan identifies science and policy areas related to the sustainability initiatives below, with the goal to have Environmental Task Force subcommittees assist the Environmental Manager with areas of priority:

1. Pass policies and launch public education programs to prevent plastic pollution.
2. Advance the City's Climate Change Mitigation Actions and Renewable Energy Goals.
3. Build the City's Climate Change Resiliency capacity, including Sea Level Rise Adaptation Planning and Vulnerability Assessment.  
\*Note: Sea Level Rise Vulnerability Study and Adaptation Planning mandated by State Law\*
4. Promote and enhance Water Conservation and Smart Water Management.
5. Build environmental community and professional partnerships for the City.
6. Remain nimble to incorporate and consider action on areas of emerging concern/opportunity.

If this Work Plan is approved by the City Council, the Environmental Manager and Task Force will consider policies that support each of these areas as described in the Attachment.

**POLICY ALTERNATIVES:**

City Council can decide not to approve the Work Plan or provide direction on alternate actions to consider in the Environmental Work Plan. If there are any additional items recommended, staff would work on incorporating any alternate items into the Work Plan. In addition, items can be added in Sustainability Initiatives 6, where emerging and opportunistic environmental issues are included for consideration.

**PUBLIC OUTREACH/INTEREST:**

As part of the Work Plan, the Environmental Manager would initiate the formation of an Environmental Task Force composed of the public, stakeholders, community groups, City staff and Council, and other governmental agencies.

**ENVIRONMENTAL REVIEW**

Actions associated with topical areas and goals laid out in the Work Plan will greatly improve the environment.

**LEGAL REVIEW**

The City Attorney has reviewed this report and determined that no additional legal analysis is necessary.

**Attachments:**

1. 2018-2020 Environmental Work Plan
2. State Lands Commission Letter to City Re: Sea Level Rise Assessment
3. California Coastal Commission Sea Level Rise Policy Guidance Cover
4. PowerPoint Presentation





# 2018-2020 ENVIRONMENTAL WORK PLAN

## **MANHATTAN BEACH'S ENVIRONMENTAL PROGRAMS**

Manhattan Beach has a long history of environmental leadership, policy, and stewardship, both as a community and as a city government. In 2007, the City developed an environmental report “Working toward a Greater, Greener Manhattan Beach.” Known as the “Green Report,” this plan documents the City's environmental practices and identifies other actions that the City can consider adopting to enhance our environmental programs and policies. Following the completion of this report, the City hired its first Environmental Programs Manager in 2008 to coordinate the City's sustainability policies, and created a community Environmental Task Force to analyze priority environmental issues and make recommendations to City Council. The vision for the sustainability movement in the City came from the original Environmental Task Force “to unite the community in a comprehensive effort to promote sustainable living in the City of Manhattan Beach.” To maintain the City's significant achievements in the environmental arena, and continue growing sustainably in the future, City Council adopted the 2012-2013 Environmental Action Plan. The Environmental Action Plan covered several programs including green business, energy/renewable energy, water conservation, and pollution prevention.

The City's 2015 Strategic Plan includes **Environmental Stewardship** as one of the main objectives considered essential to the continued success of the City and its community.

*The residents of Manhattan Beach place a high value on a healthy, outdoor, and recreational life style and are committed to protecting the environment of their beautiful coastal community. The City recognizes its leadership role in environmental stewardship and works to create a built environment that compliments the natural environment. Manhattan Beach is recognized for its progressive environmental stewardship and healthy community initiatives. A healthy and active lifestyle is accessible for residents because the City is safe, sustainable and resilient.*

The City's Environmental Stewardship Governance Activities include: 1. proactively reviewing changes in environmental stewardship best practices; and 2. identifying leadership opportunities for environmental stewardship.

### ***Environmental Accomplishments, Policy Implementation, & Ongoing Programs***

The City of Manhattan Beach has made significant achievements in environmental sustainability over the past 10 years, establishing our community as an environmental leader. Among other awards, the City maintained its Platinum Level status in the South Bay Cities Council of Governments' Energy Leader Program in 2016, as well as the Beacon Awards Program, where the City of Manhattan Beach achieved Spotlight Awards in Agency Greenhouse Gas Reductions (9%) and Community Greenhouse Gas Reductions (9%), as well as recognition in the Sustainability Best Practices category. Distinguished throughout the U.S. as a plastic pollution reduction leader, the City has taken great strides to reduce the amount of single-use plastics entering our community through several policies- such as bans on expanded polystyrene (aka Styrofoam) and rigid polystyrene, single-use plastic bags, and smoking. Education and outreach on these important policies continues. The City has also implemented various energy efficiency measures, adopting a Sustainable Building Ordinance, Green Code Amendments for Zoning and Public Rights-of-Way, a Green Purchasing Plan, a Climate Action Plan, and conducted a Level III energy audit to identify how best to make our buildings and facilities more energy efficient. Moving forward, in addition to continuing these policies and programs, the City can initiate efforts on Climate Change Adaptation and Resiliency. Some of the notable environmental climate commitments in the City has made include participation in the Compact of Mayors initiative and the Paris Climate Agreement, reinforcing the City's commitment to climate action. Climate actions associated with these commitments are included in the Work Plan.

## **ENVIRONMENTAL WORK PLAN LONG-TERM SUSTAINABILITY PLANNING**

In August 2017, Dana Murray became Manhattan Beach's Environmental Programs Manager. Under her environmental leadership, we propose that the City put together an Environmental Sustainability Task Force composed of multi-departmental city staff, city council members, and community leaders. Meeting regularly throughout 2018-2020, this Task Force will assess and update the city's Environmental Sustainability Goals, including the development of a Sustainability Plan for the City. Incorporating lessons learned from the 2008 Green Report, 2012 Environmental Action Plan, and Climate Action Plans, the City's Environmental Task Force will identify and describe City environmental accomplishments, assess which sustainability goals are in progress, which goals were not achieved, and identify new environmental and sustainability goals and actions to pursue over the following five years, from 2020-2025.

### **MANHATTAN BEACH'S 2018-2020 LONG-TERM SUSTAINABILITY PLANNING GOALS**

- 1. Form an Environmental Task Force**
- 2. Assess and describe the City's last 10 years of Environmental Achievements**
- 3. Increase the City's Accountability by Utilizing a Sustainability Reporting Tool**
- 4. Develop the City's Environmental Sustainability Plan, for Adoption into the City's General Plan**
- 5. Create the City's Community and Municipal Climate Action Plan**
- 6. Identify Priority Areas for Environmental Action and Form Task Force Sub-committees**

In addition to the six long-term sustainability planning processes above, key topical areas of Manhattan Beach's 2018-2020 environmental work will include: building climate change resiliency in the City, performing a sea level rise vulnerability assessment and adaptation planning, exploring the City's renewable energy purchasing through joining a Community Choice Aggregation, continuing to reduce plastic pollution, enhancing our City's water conservation and management, and mitigating climate change through actions identified in our Climate Action Plan and Council directives.

**2018-2020 ENVIRONMENTAL WORK PLAN ONGOING & PRIORITY WORK AREAS**

TOPIC	PRIORITY ACTIONS		
<b>POLLUTION PREVENTION POLICY</b>	<b>Explore new plastic pollution reduction initiatives:</b> Straws-upon-request policy, reducing use of plastic utensils, etc.	<b>Education &amp; Outreach on existing City policies and programs</b>	<b>Conduct Business Outreach:</b> Green Business Program, SEED Awards, Business Associations
<b>CLIMATE CHANGE &amp; ENERGY</b>	<b>Consider Joining a Community Choice Aggregation (CCA):</b> enable our city’s electrical customers to purchase electricity from a higher percentage of renewable energy sources	<b>Implement Actions Associated with Climate Compact of Mayors &amp; Paris Climate Agreement</b>	<b>Consider a City Electric Vehicle Policy:</b> Policy to support EVs in the community; clarify City policy on charging for EV parking/electricity; signage; acquisition of EVs to the City fleet
<b>CLIMATE RESILIENCY</b>	<b>Form a Sea Level Rise Planning Team &amp; Explore Financing:</b> Research planning methodologies, including state funding (LCP grants) and local partnerships to pursue coastal resiliency projects. Work with CA State Lands Commission and Coastal Commission staff, as well as local and regional partners	<b>Complete a Sea Level Rise Vulnerability Assessment:</b> Use best available science and cutting-edge sea level rise models (such as CoSMoS) to assess the City’s physical, societal, economic, and ecosystem vulnerability to help assess and adapt to climate change	<b>Update the City’s Local Coastal Plan:</b> Incorporate sea level rise planning and a vulnerability assessment into the City’s LCP. Establish regular coordination and work together with Coastal Commission staff in the steps of the LCP planning process
<b>SMART WATER MANAGEMENT</b>	<b>Conduct Community Outreach &amp; Education:</b> focus on water conservation and drought-tolerant gardens	<b>Explore City Stormwater Capture &amp; Recycled Water Use:</b> Pursue Future Smart Water Management actions including stormwater capture, recycled water, and increased infiltration in the City.	<b>Consider Smart Water Policies:</b> Pursue policy updates on City low-impact ordinances, green building practices/building sustainability checklist
<b>COMMUNITY PARTNERSHIPS &amp; OUTREACH</b>	<b>Contribute to City’s Sustainability Digital Presence &amp; Outreach:</b> City’s Sustainability Webpages; Social Media Outreach; Environmental Awareness, Education, and Action Opportunities in the City and South Bay	<b>Build relationships and information sharing through Community Engagement and Partnerships</b>	<b>Increase City Cross-Departmental Collaboration:</b> Identify Opportunities for City cross-departmental collaboration
<b>EMERGING ISSUES</b>	<b>Remain nimble to incorporate and consider action on areas of emerging concern/opportunity</b>	<b>Opportunities Coming Soon:</b> Roundhouse Aquarium Environmental Education Collaboration; Beach Dune Restoration in the City	

## **1. POLLUTION PREVENTION PROGRAMS & POLICY**

**Pass policies and launch public education programs to prevent plastic pollution.** Single-use plastic convenience related to food and beverage consumption are surfacing in our neighborhoods, beaches, and ocean. It's now estimated that by 2050, there will be more plastic in the ocean by mass than fish. Plastic drink-related litter is one of the top items found at beach cleanups. In addition to aesthetic and pollution impacts, wildlife such as marine mammals, fish and birds often ingest plastic items, mistaking them for food. Manhattan Beach has taken great strides to reduce the amount of single-use plastics entering our community through several policies- such as bans on expanded polystyrene (aka Styrofoam) and rigid polystyrene, single-use plastic bags, and smoking.

- **Explore new plastic pollution reduction initiatives:** Straws-upon-request policy or paper straws only, reducing use of plastic utensils, etc.
- **Education & Outreach on existing City policies and programs:** Continued outreach on plastic pollution to support the City's polystyrene and plastic bag ban; provide supporting materials to other communities seeking to follow the City's lead and ban plastic bags and polystyrene; monitor violations of ordinance and contact businesses to gain compliance; coordinate with inspectors to identify violations; provide community with reusable bags and materials at outreach events to support the ban. Provide information and signage to local businesses to promote the smoking ban; meet with community groups and makes presentations on the City's policies; provide marketing materials and place community notices to encourage awareness.
- **Conduct Business Outreach:**
  - o **Green Business Program:** Promote businesses that incorporate sustainability initiatives to reduce their energy and water consumption, and waste generation. Initiated in 2012, nearly 40 businesses are certified by the City and are recognized annually.
  - o **SEED Awards:** City support to the annual South Bay Business Environmental Coalition SEED awards; City Council attends this event; MB business or organizations are usually recognized; Staff time involved in managing the awards program and organizing the awards ceremony.
  - o **Business Association:** Provide regular updates and policy requirements to the Downtown and North MB BIDs through presentations at their meetings so the businesses are aware of pollution prevention policies (smoking, plastic bags, polystyrene).

## **2. CLIMATE CHANGE & ENERGY**

**Advance the City's Climate Change Mitigation Actions and Renewable Energy Goals.** Climate change caused by emissions of greenhouse gases (GHG) from human activities is among the most significant problems facing the world today. Climate change impacts Manhattan Beach residents' health, well-being, and economic vitality. The City's 2010 Municipal Climate Action Plan and 2015 Energy Efficiency Climate Action Plan identify specific strategies and actions designed to meet the City's climate goals to strengthen our community and economy by creating clean energy jobs, reducing utility bills, and bolstering innovation. The City has enacted policies and programs to reduce emissions from its transportation, building energy, and waste sectors.

- **Consider Joining a Community Choice Aggregation (CCA):** In October 2017, City Council discussed options for CCA programs that Manhattan Beach could join, to enable our city's electrical customers to purchase electricity from a higher percentage of renewable energy sources. Council provided the following direction: initiate public outreach in partnership with Los Angeles County to provide information about the City's plan to join Los Angeles County Community Choice Energy (LACCE), and return to City Council on November 21, 2017 and December 5, 2017 to: 1. Adopt enabling ordinance and JPA agreement to join LACCE; 2. Designate Board Director and alternate(s); 3. Plan outreach to evaluate constituents' priorities for services and programs; and 4. Work with L.A. County on public outreach.
- **Implement Actions Associated with Climate Compact of Mayors & Paris Climate Agreement:** City Council approved participation in the Compact of Mayors program on November, 3, 2015; as part of this Compact, the City needs to update greenhouse gas emissions inventory and create a community wide climate action plan to meet emissions reductions goals, and publicly report the results through the Compact program. Efforts related to the City's support for the Paris Climate Agreement in June

2017 include considering participation in “We Are Still In Day of Action” (Nov. 14), and other possible climate events.

- **Consider a City EV Policy:** Possibly pursue EV Policy in the City to support EVs in the community and make a statement from the city; clarify City policy on charging for EV parking/electricity; signage; acquisition of EVs to the City fleet.
- **Continue Participation in the South Bay COG Energy Leader Program:** Manage participation in the Energy Leader program (partnership with utilities and South Bay COG).
- **Report Metrics and Participate in the Beacon Awards:** Annual participation in the Institute for Local Government’s Beacon Award Program. The program honors voluntary efforts by local governments to reduce greenhouse gas emissions, save energy and adopt policies that promote sustainability. Staff updates reporting in 10 categories to achieve annual sustainability recognition.
- **Contribute Environmental Expertise to the City LED Retrofitting Project & SCE Streetlight Purchase:** Assist Public Works and Parks & Recreation with LED light conversions including SCE incentive programs; follow Public Works’ SCE streetlight acquisition to convert to LEDs; provide support to consultant team conducting inventory of city lighting.
- **Complete an Energy Efficiency Action Plan:** Work with South Bay COG to complete the energy efficiency climate action plan (EECAP) that will be incorporated into the City’s Climate Action Plan; Need to review measures and indicate completion of projects.
- **Pursue Training Opportunities:** Climate Leaders training; Carbon Reduction Manager training; Green Cities CA workshops; Urban Sustainability Directors Network; and others to be identified.

### **3. CLIMATE RESILIENCY & SEA LEVEL RISE ADAPTATION PLANNING**

**Build the City’s Climate Resiliency capacity, including Sea Level Rise Vulnerability Assessment and Adaptation Planning. Note: Sea Level Rise Vulnerability Planning mandated by State Agencies.**

Climate Resilient Cities are those that are able to continue functioning in the face of impacts due to climate change, and recover quickly from disruptions. Ultimately, the city should create a comprehensive plan for making Manhattan Beach a climate resilient city, based on the best available science. These plans should include adaptive management plans based on iterative, flexible planning, with clearly defined, pre-set triggers in place, to signal which protocols should be enacted when various benchmarks are reached. While uncertainty exists as to how climate change will play out in Manhattan Beach in detail, we know enough to begin to take action. Planning for climate change is fundamentally a risk management strategy against an uncertain future. Cities can become more climate change resilient through on-going awareness and monitoring of their environment, and planning for the expected impacts as the probability of those impacts increase. An assessment of our coastline is the best place to start climate resiliency planning. By identifying what is vulnerable, we can gain a clearer sense of what can be done in order to reduce possible future impacts of inundation from sea level rise and flooding from coastal storms.

*\* State Mandates & Guidance: The California State Lands Commission has sent notices (Attachment 3) to the City highlighting the City’s responsibility to complete a sea level rise assessment by January 1, 2019. In addition, the California Coastal Commission unanimously adopted the State’s Sea Level Rise Policy Guidance in 2015, which outlines the need for planning, the resources available, and the steps for cities to update their Local Coastal Plans (LCPs) in incorporate sea level rise assessments and adaptation planning (Attachment 4).*

- **Form a Sea Level Rise Planning Team:** Form a team that includes representatives of local government (economic development; emergency response; parks, recreation; environmental/marine; planning and zoning; etc.); along with key stakeholders and scientists including AdaptLA, USC Sea Grant, California Coastal Commission, Los Angeles County Beaches and Harbors, USGS, California State Lands Commission, Beach Ecology Coalition, and other local groups.
- **Explore financing:** Research financing and economics of planning methodologies, including state funding (LCP grants) and local partnerships to pursue coastal resiliency projects.
- **Complete a Risk and Vulnerability Assessment:** Using best available science and cutting-edge sea level rise models (such as CoSMoS) to assess the City’s societal vulnerability, economic vulnerability,

and ecosystem vulnerability will help assess and adapt to climate change. This assessment would evaluate the consequences of hazards or processes occurring, assess adaptive capacity, develop adaptation strategies, and communicate these strategies with government departments and community.

- **Work with Community Development's Planning Division and the CA Coastal Commission to Update the City's Local Coastal Plan:** Incorporate sea level rise planning and a vulnerability assessment into the City's LCP. Staff will establish regular coordination and work together with Coastal Commission staff in the steps of the LCP planning process. The main steps of this process include:
  - o Step 1. Determine a range of sea level rise projections relevant to LCP planning area/segment using best-available science, which is currently the 2012 NRC Report, and AdaptLA CoSMoS reports for Los Angeles County.
  - o Step 2. Identify potential physical sea level rise impacts in the LCP planning area/segment, including inundation, storm flooding, wave impacts, erosion, and/or saltwater intrusion into freshwater resources.
  - o Step 3. Assess potential risks from sea level rise to coastal resources and development in the LCP planning area/segment, including those resources addressed in Chapter 3 of the CA Coastal Act. (Incorporate from the Vulnerability Assessment)
  - o Step 4. Identify adaptation measures and LCP policy options to include in the new or updated LCP, including both general policies and ordinances that apply to all development exposed to sea level rise, and more targeted policies and land use changes to address specific risks in particular portions of the planning area. This includes options that could work along Manhattan Beach's coast, especially as they relate to natural coastal resiliency (such as beach dune restoration). All adaptation options for each projected hazard are identified, the criteria for assessing each option is specified; all options are evaluated, recommendations are developed, a plan is drafted and internal review of this draft is completed, and last the adaptation options are communicated with government departments and the community.
  - o Step 5. Draft updated or new LCP for certification with California Coastal Commission, including the Land Use Plan and Implementing Ordinances.
  - o Step 6. Implement the LCP and monitor and re-evaluate strategies as needed to address new circumstances relevant to the area.

#### **4. WATER CONSERVATION, SMART WATER MANAGEMENT, & SUSTAINABLE LANDSCAPING**

**Promote and enhance Water Conservation and Smart Water Management.** Importing over 80% of our water supply in the greater L.A. area is no longer a sustainable model, especially in the face of climate change. Conserving more water while utilizing local water resources- such as from wastewater recycling, stormwater capture, infrastructure repair, and low-impact development- is needed. To make these solutions a reality, financial investment and therefore a supportive and informed public is vital. In accordance with best-available science, Manhattan Beach's City Council is opposed to local open ocean desalination, maintaining that ocean desalination must be our last resort as it remains the most expensive, most energy intensive, and most environmentally impactful alternative. Since the rate of wastewater recycling locally is very low, as are our efforts to retain the rainfall that we do receive, these smart water efforts should be pursued in order for Manhattan Beach to become more sustainable.

- **Conduct Community Outreach & Education:** participation in Green Cities CA: focus on water conservation; Botanical Garden & Landscape Classes; West Basin Classes & rebate information; Mulch program; Demonstration Gardens & grants; provide water conservation information at outreach events.
- **Identify areas for Future Action:** Water issues are important to the community, and will continue to gain importance due to drought conditions and climate change. Options the City could consider include working with Public Works on enhancing the City's use of recycled water and stormwater capture, as well as with the City's Community Development Department on Low-Impact Development and Sustainable Building Ordinances.

## **5. COMMUNITY PARTNERSHIPS, PROFESSIONAL COALITIONS, & ENVIRONMENTAL EDUCATION**

- **Contribute to City's Digital Presence & Outreach:**
  - o Update, Streamline, and Maintain City's Sustainability Webpages
  - o Coordinate with City Manager's Office and Parks & Rec on Social Media Outreach
  - o Highlight and Collaborate on Environmental Awareness, Education, and Action Opportunities in the City and South Bay to celebrate Earth Month in April
- **Build relationships through Community Engagement and Partnerships:** MBUSD Green Committee; Climate Compact of Mayors; MB LEAD; Santa Monica Bay Pier Stakeholders Group; South Bay CCOG (Renewable South Bay Working Group; Energy Management Working Group); Southern CA Beach Ecology Coalition; SEED Awards; Green Cities CA; MB Farmer's Market; AdaptLA; Santa Monica Bay Restoration Commission; Los Angeles Marine Protected Area Collaborative; Coastal Cleanup Day; Urban Sustainability Directors Network; Manhattan Beach Botanical Garden; Surfrider Foundation - South Bay Chapter; Roundhouse Aquarium; Heal the Bay; South Bay Clean Power; Downtown MB Business association; L.A. County Beaches & Harbors; USC Sea Grant; Manhattan Beach Chamber of Commerce; National Charity League – South Bay; Grades of Green; Amigos Unidos; City and County Sustainability/Environmental jurisdictions; and others to emerge.
- **Increase City Cross-Departmental Collaboration:** Identify Opportunities for City cross-departmental collaboration for public education. Some ideas included below:
  - o Community Development
    - Planning Division: LCP update, environmental and coastal impact assessments
    - Building Division: Low-Impact Development Ordinance updates, LEED certification, etc.
    - Traffic Engineering: Promote alternative transportation to reduce GHGs
  - o Parks & Recreation - public programming opportunities, environmental education
  - o Public Works – energy efficiency, renewable energy projects, smart water management, waste management, food waste prevention and food recovery, Roundhouse Aquarium
  - o Fire & Police Departments – emergency planning, including coastal hazards
  - o Management Services – Climate Compact of Mayors and other Council Engagement

## **6. OTHER TOPICS, EMERGING ISSUES, & OPPORTUNITIES TO CONSIDER**

**Goal is to remain nimble to incorporate and consider action on areas of emerging concern/opportunity.**

Listed below are a handful of examples of topics that have already emerged for consideration in the City's environmental sustainability work. These items would be considered on a case-by-case basis for staff analysis and/or City Council action.

- Roundhouse Aquarium Environmental Education Collaboration
- Beach Dune Restoration in the City
- Ballona Wetlands Restoration
- Re-assess City's potential for solar panel installation
- Assess Mechanical Blower Ban (per August 2017 Council meeting)
- Assess Fireplace Use (per Montgomery)





**CALIFORNIA STATE LANDS COMMISSION**  
100 Howe Avenue, Suite 100-South  
Sacramento, CA 95825-8202



*Established in 1938*

**JENNIFER LUCCHESI, Executive Officer**  
**(916) 574-1800 Fax (916) 574-1810**  
*California Relay Service TDD Phone 1-800-735-2929*  
*from Voice Phone 1-800-735-2922*

**Contact Phone: (916) 574-0450**

January 30, 2017

File Ref: G 05-05

City of Manhattan Beach  
Mark Danaj  
City Manager  
1400 Highland Avenue  
Manhattan Beach, CA 90266

Dear Mr. Danaj:

The California State Lands Commission staff would like to remind the City of its responsibility to complete a sea-level rise assessment by January 1, 2019. As you may know, in 2013, the California legislature passed AB 691 (Muratsuchi), Chapter 592, Statutes of 2013, requiring granted land trustees that receive on average of \$250,000 in gross revenues annually from their granted lands to assess the impacts of sea-level rise on their granted lands. The assessment must include the following information:

1. An assessment of the impact of sea-level rise on granted public trust lands, as described in the Resolution of the California Ocean Protection Council on Sea level Rise and the latest version of the State of California Sea-Level Rise Guidance Document.
2. Maps showing the areas that may be affected by sea-level rise in the years 2030, 2050, and 2100. These maps shall include the potential impacts of 100-year storm events. Maps generated by other entities may be used to satisfy the requirement.
3. An estimate of the financial cost of the impact of sea-level rise on granted public trust lands. The estimate should consider the potential cost to repair damage, the value of lost use of improvements and land, and the anticipated cost to prevent or mitigate potential damage.
4. A description of how to protect and preserve natural and man-made resources and facilities located, or proposed to be located, on your trust lands and operated in connection with the use of the trust lands, including how wetlands restoration and habitat preservation would mitigate impacts of sea-level rise.

The Commission recognizes that preparing for sea-level rise is challenging and uncharted terrain for many local jurisdictions. To assist, Commission staff has created a webpage that features detailed information about the criteria for meeting the reporting requirements in AB 691. The webpage also includes up-to-date sea-level rise and flooding mapping tools, peer-reviewed science and planning materials, and sea-level rise guidance and policy documents referenced in AB 691. To access the webpage, please visit [www.slc.ca.gov/Info/AB691.html](http://www.slc.ca.gov/Info/AB691.html).

Commission staff would like to check in with you periodically to see if we can be of assistance or provide an opportunity to connect the City with other trustees to share tools, research, and methodology to help complete the assessment. **Please email me the contact information of the staff person responsible for overseeing the assessment. I can be reached at [Reid.Boggiano@slc.ca.gov](mailto:Reid.Boggiano@slc.ca.gov), or by phone at (916) 574-0450.** I'm also available to answer any questions or address concerns. I look forward to hearing from you.

Sincerely,



Reid Boggiano  
Public Land Management Specialist

cc: **Henry Mitzner**  
City Controller  
1400 Highland Avenue  
Manhattan Beach, CA 90266



# CALIFORNIA COASTAL COMMISSION

## SEA LEVEL RISE POLICY GUIDANCE

---

### *Interpretive Guidelines for Addressing Sea Level Rise in Local Coastal Programs and Coastal Development Permits*

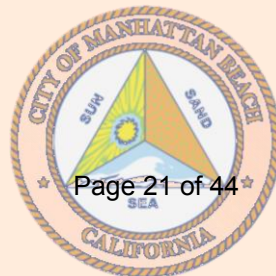


**UNANIMOUSLY ADOPTED – AUGUST 12, 2015**



# Environmental Work Plan 2018-2020

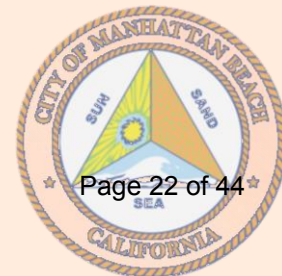
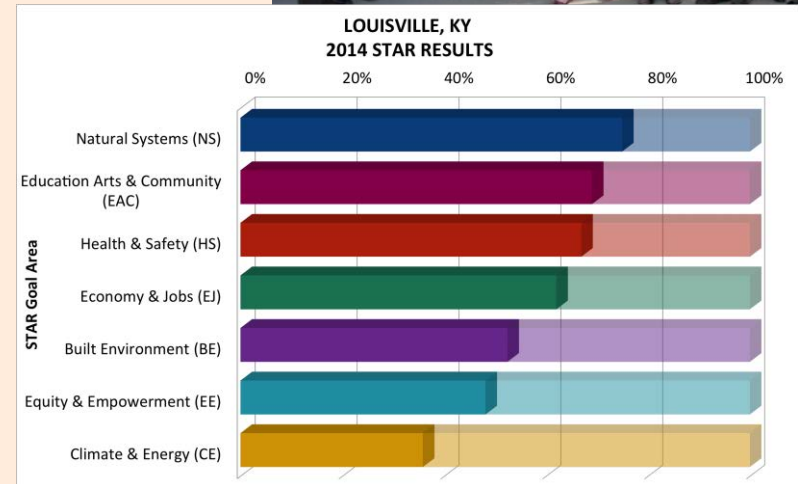
Dana Murray  
Environmental Programs Manager



# MANHATTAN BEACH'S 2018-2020

## LONG-TERM SUSTAINABILITY PLANNING GOALS

1. Form an Environmental Task Force
2. Assess and describe the City's last 10 years of Environmental Achievements
3. Increase the City's Accountability by Utilizing a Sustainability Reporting Tool
4. Develop the City's Environmental Sustainability Plan, for Adoption into the City's General Plan
5. Create the City's Community and Municipal Climate Action Plan
6. Identify Priority Areas for Environmental Action and Form Task Force Sub-committees



# TOPIC

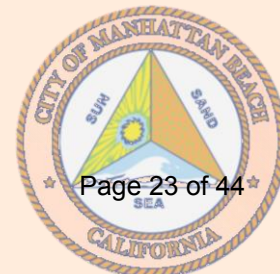
# PRIORITY ACTIONS

**POLLUTION  
PREVENTION  
POLICY**

**Explore new plastic pollution reduction initiatives:** Straws-upon-request policy, reducing use of plastic utensils, etc.

**Education & Outreach on existing City policies and programs**

**Conduct Business Outreach:** Green Business Program, SEED Awards, Business Associations



# TOPIC

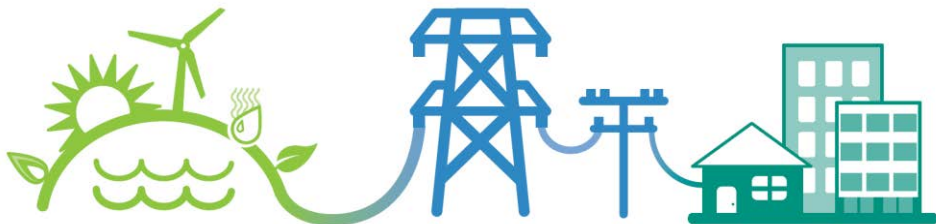
# PRIORITY ACTIONS

## CLIMATE CHANGE & ENERGY

**Consider Joining a Community Choice Aggregation (CCA):** enable our city's electrical customers to purchase electricity from a higher percentage of renewable energy sources

**Implement Actions Associated with Climate Compact of Mayors & Paris Climate Agreement**

**Consider a City Electric Vehicle Policy:** Policy to support EVs in the community; clarify City policy on charging for EV parking/electricity; signage; acquisition of EVs to the City fleet



**RENEWABLE ENERGY**  
*Electric Generation*

**SAME SERVICE AS ALWAYS**  
*Electric Delivery*

**YOUR COMMUNITY**  
*A Greener Electricity*

### CALIFORNIA LOCAL LEADERSHIP



**SAN FRANCISCO**

- Comprehensive plan to upgrade, and expand, hundreds of public charging sites.
- Innovative solutions for curbside charging and charging at Multi-unit Dwellings.
- Battery switching demonstration program with PEV taxicab fleet.
- City Department Workshops to encourage city-wide PEV adoption.



**LOS ANGELES**

- Goal: 7-day permitting, inspection and approval process for home PEV charging installations. Moved permitting online.
- Incentives of up to \$2,000 per household for charging installation.
- Free PEV parking at Los Angeles International Airport.
- Building code amendments to require PEV charging in new construction.



**SAN DIEGO**

- U.S. D.O.E. EV Project award – ECOTality, Nissan, and SDG&E partnership will place hundreds of public access stations, including some DC Fast Charging.
- First all-electric car sharing program in North America.
- Smart City San Diego consortium will foster greater PEV public charging.
- SDG&E leadership in Multi-unit Dwelling charging outreach, options.



**SONOMA**

- Adopted PEV Charging Station Program and Installation Guidelines, 2011.
- Installed over 40 public and fleet PEV charging stations; aiming for total of 130 stations in 2012.
- Obtained funding for over 30 PEVs and chargers.
- PEVs, along with hybrid electric vehicles, comprise 30% of County's fleet.





# TOPIC

# PRIORITY ACTIONS

## CLIMATE RESILIENCY

**Form a Sea Level Rise Planning Team & Explore Financing:** Research planning methodologies, including state funding (LCP grants) and local partnerships to pursue coastal resiliency projects. Work with CA State Lands Commission and Coastal Commission staff, as well as local and regional partners

**Complete a Sea Level Rise Vulnerability Assessment:** Use best available science and cutting-edge sea level rise models (such as CoSMoS) to assess the City's physical, societal, economic, and ecosystem vulnerability to help assess and adapt to climate change

**Update the City's Local Coastal Plan:** Incorporate sea level rise planning and a vulnerability assessment into the City's LCP. Establish regular coordination and work together with Coastal Commission staff in the steps of the LCP planning process

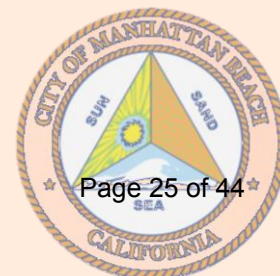
### California coast ocean level could rise 10 feet in 70 years

Addressing sea-level rise would cost a staggering amount of public and private money

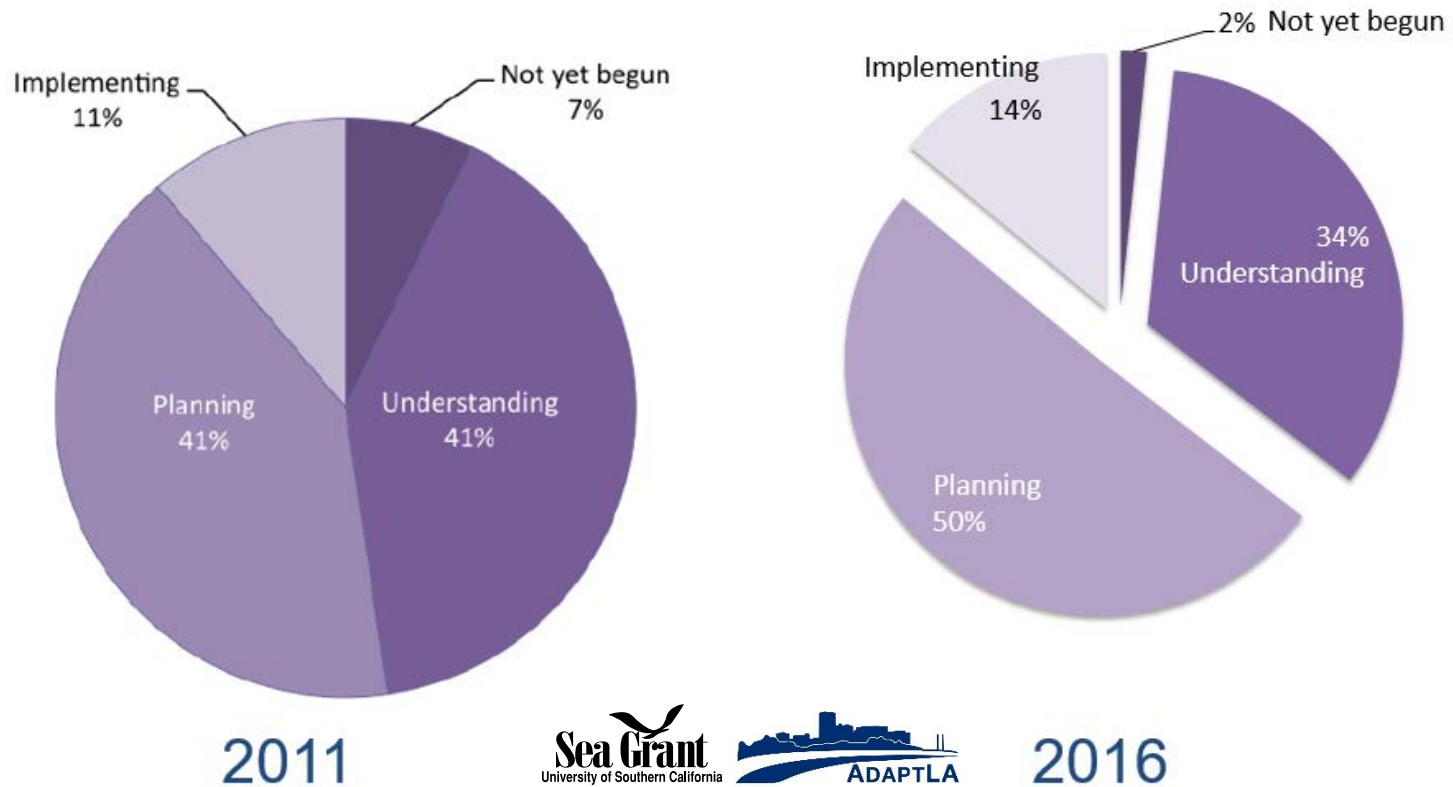


15-foot waves batter the coast on Beach Boulevard in Pacifica on Jan. 23, 2016. (John Green /San Jose Mercury News, File)

By JULIE CART, CALMATTERS |  
PUBLISHED: April 30, 2017 at 6:55 am | UPDATED: April 30, 2017 at 1:31 pm



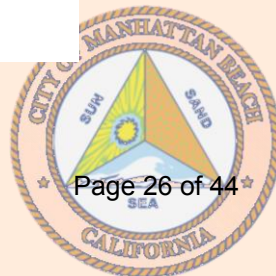
# Where are local jurisdictions in the adaptation planning & decision-making cycle?

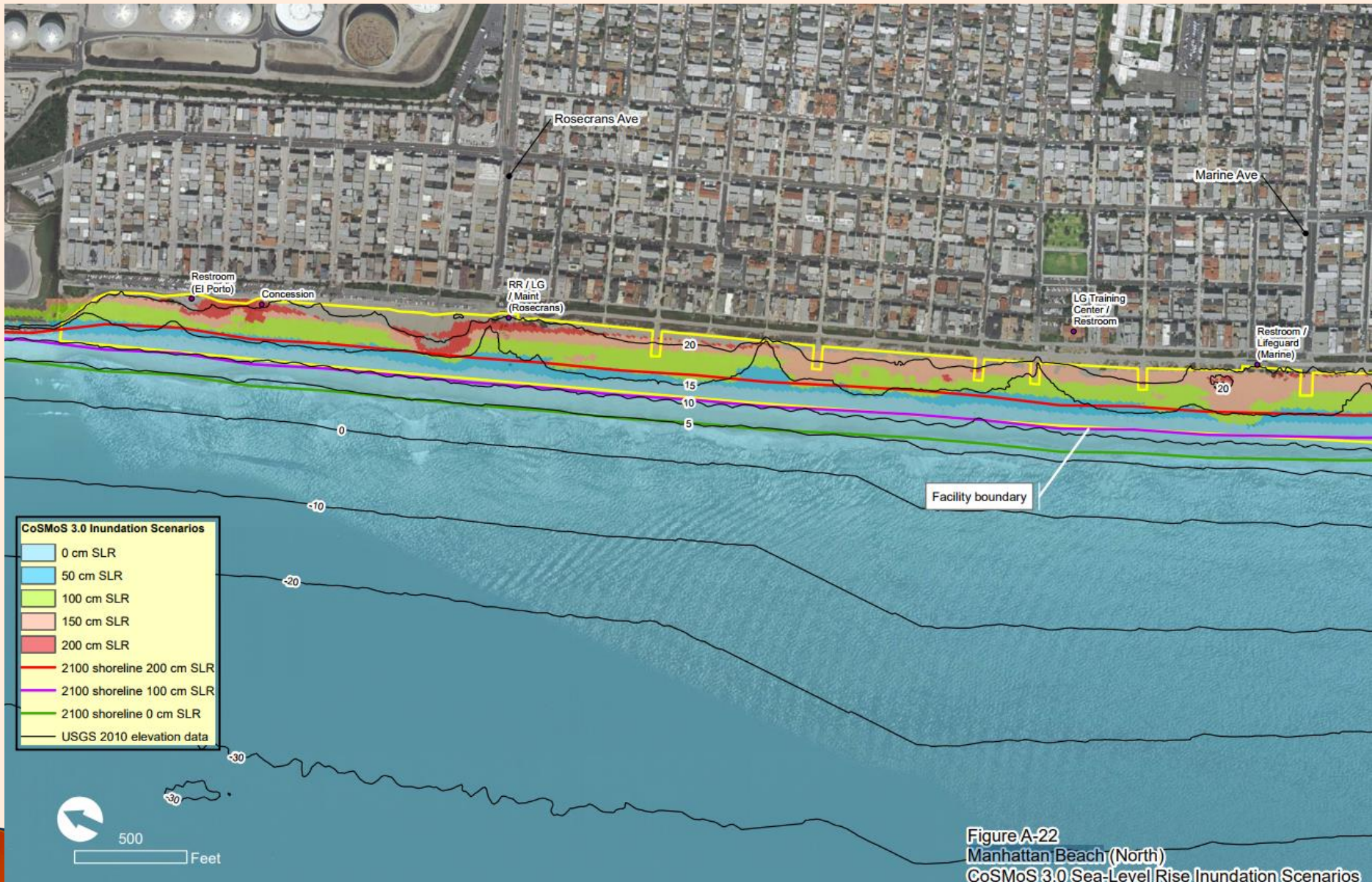


2011



2016





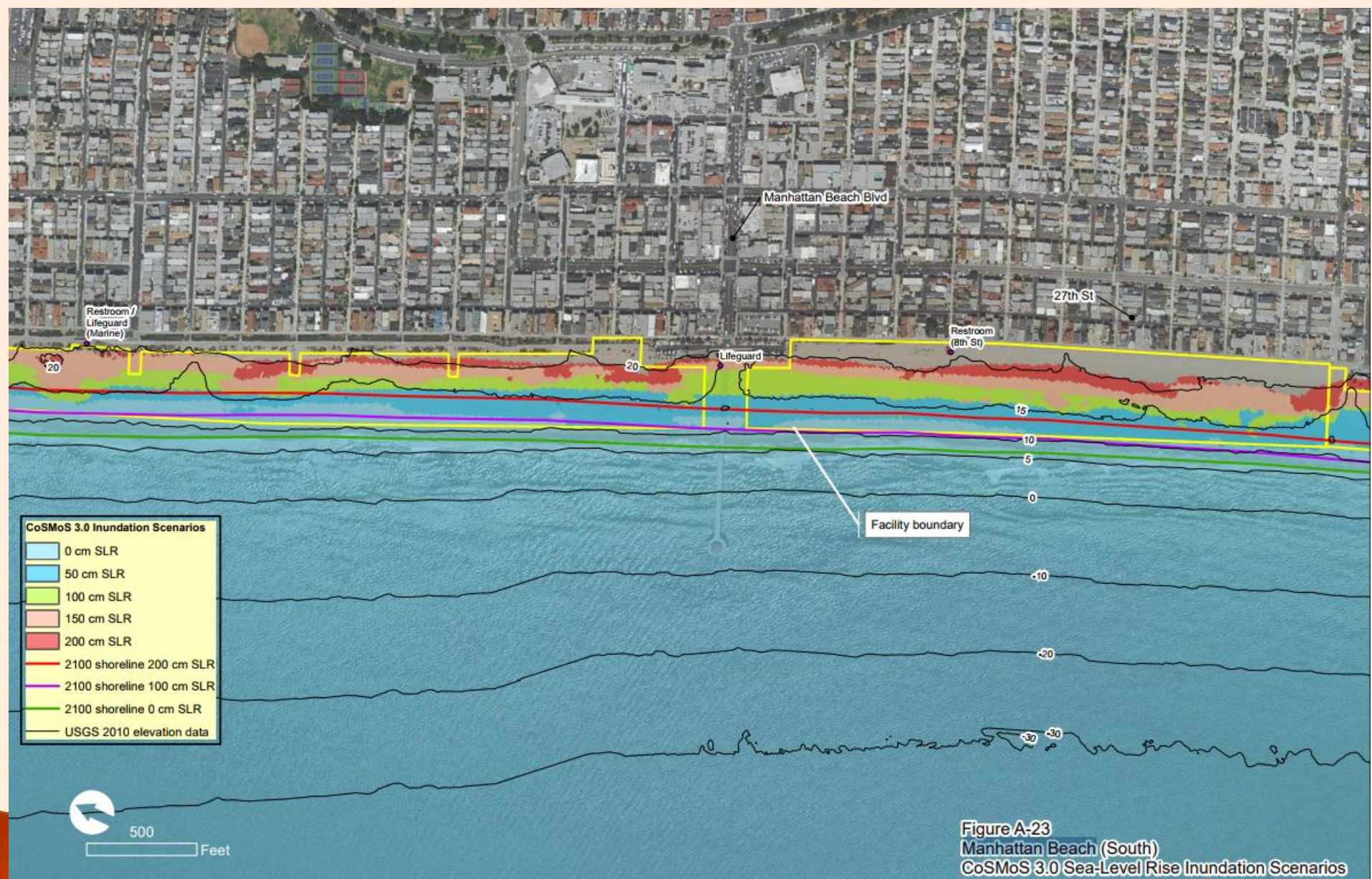


Figure A-23  
 Manhattan Beach (South)  
 CoSMoS 3.0 Sea-Level Rise Inundation Scenarios

# Water-Related Infrastructure



- >90% impermeable surface
- Back-up of runoff during heavy rainfall events
- More street flooding
- Recent stormwater system overhaul very helpful
- Sewage system deficient, need for rehab already recognized
- Additional challenges from saltwater intrusion, corrosion

# Water-Related Infrastructure



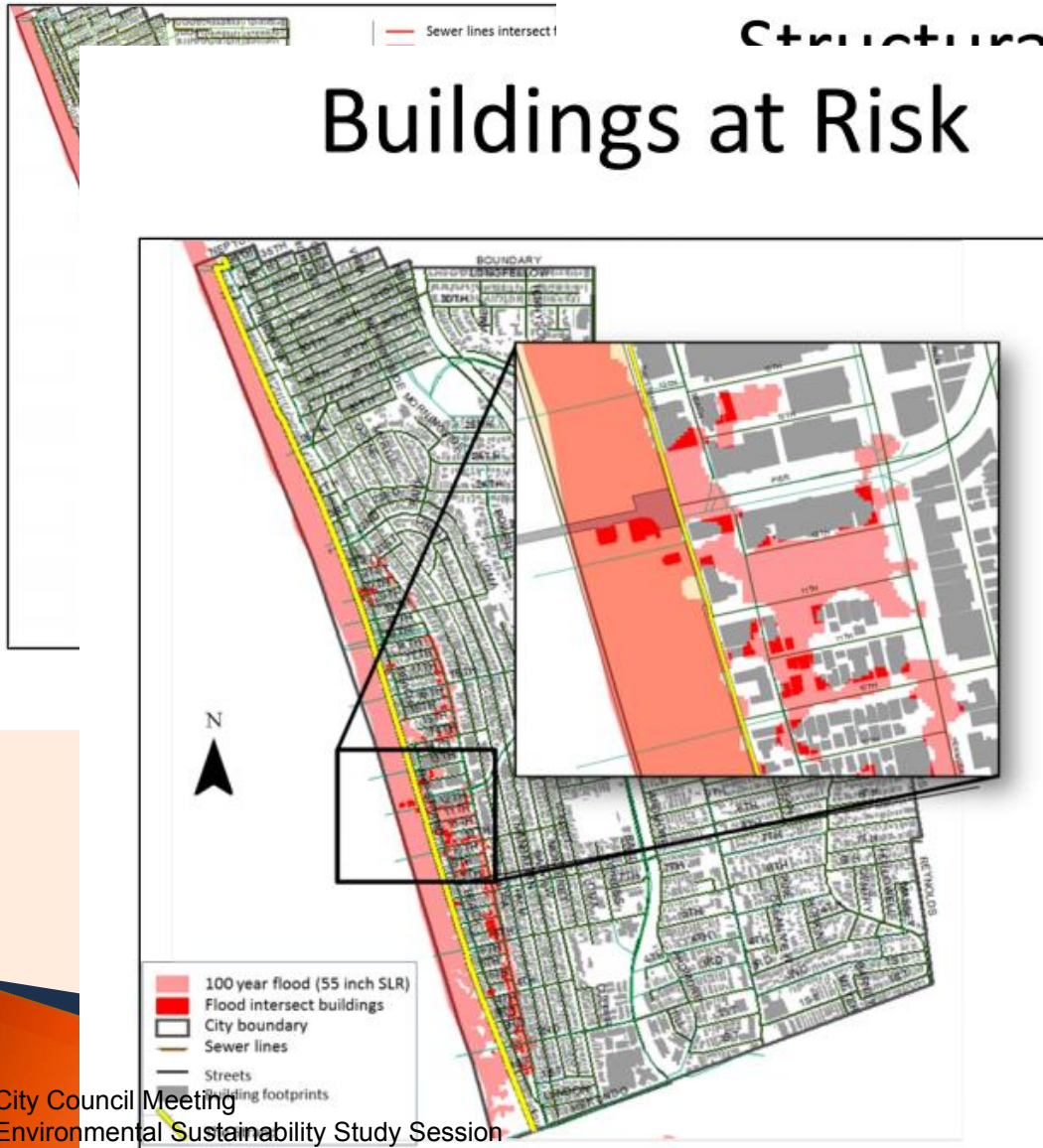
## Structural Vulnerabilities

- 202 buildings exposed, incl.
  - 143 residential buildings
  - a church parking lot (at 1540 Hermosa Avenue)
  - 13 government owned buildings
- Replacement value of buildings and contents (Hazus database)
  - \$35 million (in 2000\$)
- Not incl. growth, infill, value change



# Water-Related Infrastructure

## Structural Vulnerabilities Buildings at Risk



d, incl.  
dings  
:(at  
ue)  
ned  
of  
nts  
(\$)  
fill,



## TOPIC

## PRIORITY ACTIONS

### SMART WATER MANAGEMENT

**Conduct Community Outreach & Education:** focus on water conservation and drought-tolerant gardens

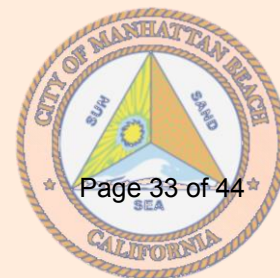
**Explore City Stormwater Capture & Recycled Water Use:** Pursue Future Smart Water Management actions including stormwater capture, recycled water, and increased infiltration in the City.

**Consider Smart Water Policies:** Pursue policy updates on City low-impact ordinances, green building practices/building sustainability checklist





TOPIC	PRIORITY ACTIONS		
<p><b>COMMUNITY PARTNERSHIPS &amp; OUTREACH</b></p>	<p><b>Contribute to City's Sustainability Digital Presence &amp; Outreach:</b> City's Sustainability Webpages; Social Media Outreach; Environmental Awareness, Education, and Action Opportunities in the City and South Bay</p>	<p><b>Build relationships and information sharing through Community Engagement and Partnerships</b></p>	<p><b>Increase City Cross-Departmental Collaboration:</b> Identify Opportunities for City cross-departmental collaboration</p>



## TOPIC

## PRIORITY ACTIONS

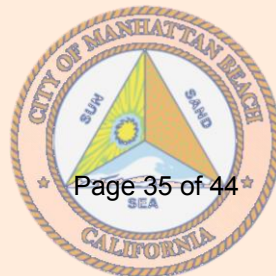
### EMERGING ISSUES

**Remain nimble to incorporate and consider action on areas of emerging concern/opportunity**

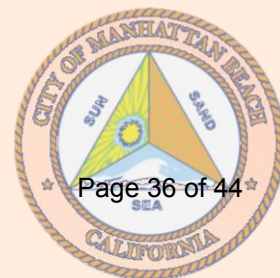
**Opportunities Coming Soon:**  
Roundhouse Aquarium  
Environmental Education  
Collaboration; Beach Dune  
Restoration in the City



# Next Steps



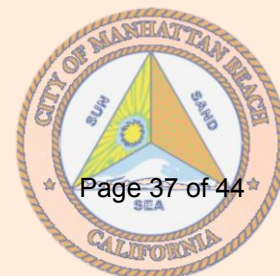
# Discussion & Questions



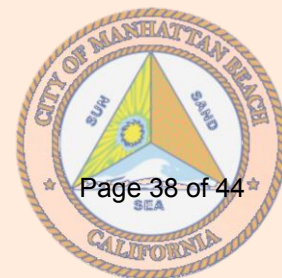
# MANHATTAN BEACH'S 2018-2020

## LONG-TERM SUSTAINABILITY PLANNING GOALS

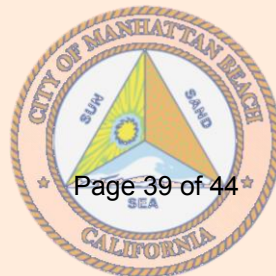
- 1. Form an Environmental Task Force**
- 2. Assess and describe the City's last 10 years of Environmental Achievements**
- 3. Increase the City's Accountability by Utilizing a Sustainability Reporting Tool**
- 4. Develop the City's Environmental Sustainability Plan, for Adoption into the City's General Plan**
- 5. Create the City's Community and Municipal Climate Action Plan**
- 6. Identify Priority Areas for Environmental Action and Form Task Force Sub-committees**



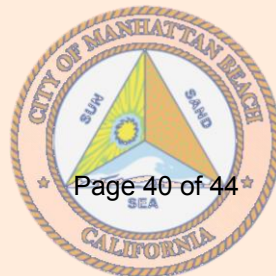
TOPIC	PRIORITY ACTIONS		
<b>POLLUTION PREVENTION POLICY</b>	<b>Explore new plastic pollution reduction initiatives:</b> Straws-upon-request policy, reducing use of plastic utensils, etc.	<b>Education &amp; Outreach on existing City policies and programs</b>	<b>Conduct Business Outreach:</b> Green Business Program, SEED Awards, Business Associations



TOPIC	PRIORITY ACTIONS		
<p><b>CLIMATE CHANGE &amp; ENERGY</b></p>	<p><b>Consider Joining a Community Choice Aggregation (CCA):</b> enable our city's electrical customers to purchase electricity from a higher percentage of renewable energy sources</p>	<p><b>Implement Actions Associated with Climate Compact of Mayors &amp; Paris Climate Agreement</b></p>	<p><b>Consider a City Electric Vehicle Policy:</b> Policy to support EVs in the community; clarify City policy on charging for EV parking/electricity; signage; acquisition of EVs to the City fleet</p>

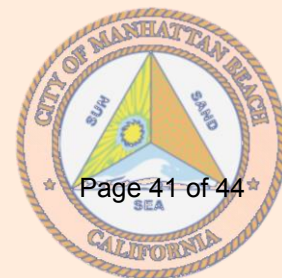


TOPIC	PRIORITY ACTIONS		
<p style="text-align: center;"><b>CLIMATE RESILIENCY</b></p>	<p><b>Form a Sea Level Rise Planning Team &amp; Explore Financing:</b> Research planning methodologies, including state funding (LCP grants) and local partnerships to pursue coastal resiliency projects. Work with CA State Lands Commission and Coastal Commission staff, as well as local and regional partners</p>	<p><b>Complete a Sea Level Rise Vulnerability Assessment:</b> Use best available science and cutting-edge sea level rise models (such as CoSMoS) to assess the City's physical, societal, economic, and ecosystem vulnerability to help assess and adapt to climate change</p>	<p><b>Update the City's Local Coastal Plan:</b> Incorporate sea level rise planning and a vulnerability assessment into the City's LCP. Establish regular coordination and work together with Coastal Commission staff in the steps of the LCP planning process</p>

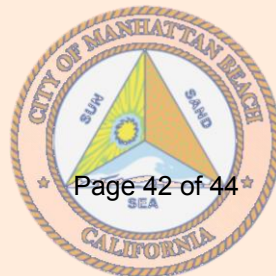




TOPIC	PRIORITY ACTIONS		
<b>SMART WATER MANAGEMENT</b>	<b>Conduct Community Outreach &amp; Education:</b> focus on water conservation and drought-tolerant gardens	<b>Explore City Stormwater Capture &amp; Recycled Water Use:</b> Pursue Future Smart Water Management actions including stormwater capture, recycled water, and increased infiltration in the City.	<b>Consider Smart Water Policies:</b> Pursue policy updates on City low-impact ordinances, green building practices/building sustainability checklist



TOPIC	PRIORITY ACTIONS		
<p><b>COMMUNITY PARTNERSHIPS &amp; OUTREACH</b></p>	<p><b>Contribute to City's Sustainability Digital Presence &amp; Outreach:</b> City's Sustainability Webpages; Social Media Outreach; Environmental Awareness, Education, and Action Opportunities in the City and South Bay</p>	<p><b>Build relationships and information sharing through Community Engagement and Partnerships</b></p>	<p><b>Increase City Cross-Departmental Collaboration:</b> Identify Opportunities for City cross-departmental collaboration</p>



TOPIC	PRIORITY ACTIONS	
EMERGING ISSUES	<p><b>Remain nimble to incorporate and consider action on areas of emerging concern/opportunity</b></p>	<p><b>Opportunities Coming Soon:</b>            Roundhouse Aquarium            Environmental Education            Collaboration; Beach Dune            Restoration in the City</p>

