

Manhattan Beach • Winter 2018

Commercial Recycling News



New Organic Waste Recycling Requirements for 2019



In April 2016, AB 1826 California's Mandatory Organic Waste Recycling Law, required businesses and multi-family properties that generate 8 cubic yards of organic waste to arrange for organic waste recycling services.

Effective January 2019, this requirement extends to businesses and multi-family properties that generate 4 cubic yards of commercial solid waste, regardless of the amount of organic waste generated.

**Organic waste includes food waste, green waste, landscape and pruning waste, nonhazardous wood waste and food-soiled paper waste that is mixed with food waste. While businesses must divert all of these materials, multi-family properties do not need to have a food waste program.*

Year Cubic Yards Generated Weekly

- **2017** 4 (organic waste)
- **2019** 4 (commercial solid waste, regardless of amount of organic waste)
- **2020** 2 (commercial solid waste, regardless of amount of organic waste)

Food waste recycling is available to all businesses in the City of Manhattan Beach. The cost is already included in your refuse rate. If you are not yet participating, please call Waste Management Customer Service and our organics experts will visit your business to share details about our food waste-to-energy program, train your staff and answer any questions you may have. We can custom design a program that best fits your needs.



Please contact us at askgreen@wm.com to help set up your food waste recycling program.

Commercial Recycling



Recycling is mandatory in the City of Manhattan Beach. With the adoption of AB 341, the state of California requires commercial enterprises and public entities that generate four or more cubic yards per week of waste, and multi-family housing facilities with five or more units, to adopt recycling practices.

Waste Management can help you comply with AB 341!

Waste Management offers Manhattan Beach commercial businesses recycling at no additional charge, for both commercial bins and carts. Waste Management's single-stream recycling program makes it easy for your business to recycle, by allowing all of your recyclables to be placed in a single bin.



Help Keep Recycling Strong by Sticking to the basics.



1 Recycle all empty plastic bottles, cans, paper and cardboard.



2 Keep food and liquids out of the recycling.



3 Empty recyclables directly into your cart - NO bagged recyclables.

Avoid placing common contaminants in your bin. Please see reverse for a list.





RECYCLE OFTEN.
RECYCLE RIGHT.™



Most Common Contaminants

Keep these common contaminants OUT of your recycling bin.



NO Recyclables in Plastic Bags

Empty loose recyclables in bin but leave the plastic bag out.



NO Food & liquids

Compost instead! Otherwise, it belongs in the trash.



NO Electronics & Small Appliances

Donate if in good condition, or schedule a bulky item pickup, if available. Check earth911.com for a local drop off site.



NO Textiles, Bedding, Rugs & Carpet

Donate these items if they are in good condition. Large quantities may require special disposal.



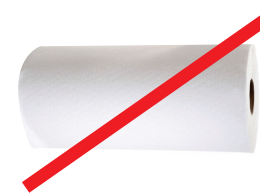
NO Hoses, Holiday Lights, Hangers & Extension Cords

They wrap around equipment and can shut down an entire facility! They all go in the trash.



NO Plastic Bags, Film/Sheeting & Flexible Film Packaging

Take plastic bags back to a local grocer to keep bags clean and dry, and prevent them from shutting down recycling facilities. Visit plasticfilmrecycling.org to find a drop off location near you.



NO Paper Napkins, Plates, Cups & Tissues

Compost if possible, and remember to recycle the cardboard tube.



NO Polystyrene Foam

Foam and plastic to-go containers are not recyclable curbside. Find drop off programs for items like foam packing peanuts at earth911.com.



NO Tires, Auto Parts & Scrap Metal

(Not in recycling or trash) Can damage equipment & are safety hazards. Contact local scrap recyclers or retail tire stores for recycling options, or check earth911.com for a drop off center near you.



NO Concrete, Wood & Construction Debris

Can damage equipment & are safety hazards. You may be able to schedule a bulky item pickup - otherwise throw it in the trash or order a roll off bin by contacting Waste Management Customer Service.



NO Yard Waste & Wood

Compost or put in your yard waste cart, if available. Otherwise, it belongs in the trash.



NO Non-Recyclable Plastic

Not everything that is plastic is recyclable! Recycle only food & beverage bottles, jugs and tubs.

For more information on recycling, visit RecycleOftenRecycleRight.com

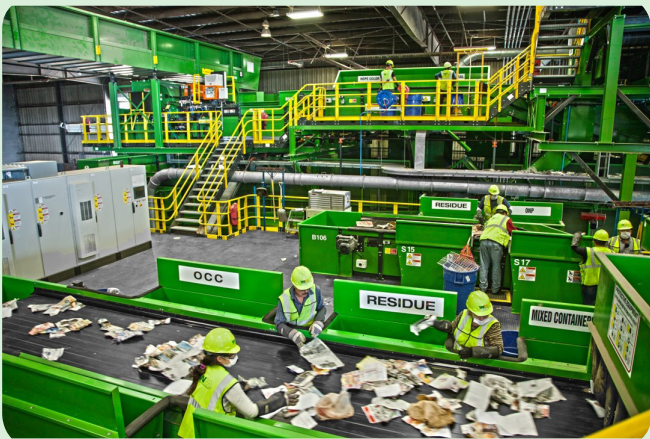


Waste Management Customer Service
Phone: (310) 830-7100
Email: wmservice@wm.com
Web: business.wm.com/manhattan-beach



Waste Management Facility Tour Dates

Learn more about what happens to material after it leaves the curb! Visit the [Azusa MRF](#) (Material Recovery Facility) to learn about what happens to recyclable material in your blue cart and visit the [COrE[®] facility](#) (2050 N. Glassell, Orange, CA 92865) to learn more about what happens to the food waste placed in your green cart. Please note, tour attendees must be over the age of 14 and wear closed toe shoes. Space is limited. Please email askgreen@wm.com or call (310) 924-0402 to confirm your attendance.



2019 Facility Tour Dates and Locations:

Monday, September 16th at 10:00 AM
[Azusa Material Facility](#)

(Learn about what happens to the material in your blue recycling cart)

1501 W. Gladstone Ave., Azusa, CA 91702

Monday, October 21st at 10:00 AM
[Orange County Recycling Center—](#)
[COrE[®] Facility](#)

(Learn about what happens to the food waste in your green cart)

2050 N. Glassell, Orange, CA 92865

Monday, November 18th at 10:00 AM
[Azusa Material Facility](#)

(Learn about what happens to the material in your blue recycling cart)

1501 W. Gladstone Ave., Azusa, CA 91702

FREE Composting Classes

Join us at the Manhattan Beach Botanical Garden inside Polliwog Park for a FREE one hour class to learn about backyard composting and our curbside food scraps program! All levels are welcome, classes are free, open to the public and reservations are not necessary. For more information, please call Waste Management Customer Service at (310) 830-7100 or visit home.wm.com/manhattan-beach. Discount bins are available to Manhattan Beach residents for purchase year round (please call Waste Management Customer Service to order).



2019 Composting Class Schedule:

All classes start at **10:00 AM** at the
Botanical Garden in Polliwog Park
1601 Manhattan Beach Blvd (at Peck Ave):

Saturday, May 14, 2019

Saturday, July 13, 2019

Saturday, October 12, 2019

Holidays

Waste Management observes the following holidays:

New Year's Day

Memorial Day

4th of July

Labor Day

Thanksgiving Day

Christmas Day

**Collection service will be delayed one day following the above holidays. If a holiday falls on a Saturday or Sunday, there will be no delays.*

Green Business Certification



Does your business strive to consciously conserve resources every day? Let us recognize your efforts with our Green Business Certification. Waste Management, the City of Manhattan Beach, the Chamber of Commerce and the Downtown Manhattan Beach Business Association have partnered up to certify and recognize Manhattan Beach businesses that promote sustainability in their business practices.

How to Apply:

- If you own a business in Manhattan Beach, you can apply for certification by visiting greenbusinessca.org and filling out the application.
- A Waste Management representative will contact you to follow up on the application and discuss the certification process.
- Or contact us at askgreen@wm.com.

By participating in this program, not only will you help the environment and preserve valuable resources, you will also benefit from:

- A healthier workplace
- Significant cost savings and access to rebates
- A “green seal” to place on your door or window
- An invitation to an annual awards ceremony hosted by Waste Management and the City of Manhattan Beach
- Recognition on Waste Management’s local website: business.wm.com/manhattan-beach

Tips to Maximize Recycling at the Office

Appoint an office champion- identify someone who will take ownership of the AB 341 process and coordinate employee participation.

Recycle- Place a desk-side recycling container (an empty copier paper carton will suffice) at every desk. Collect paper, bottles, cans, and cardboard/paperboard from all your employees. Recycle old printer cartridges using mail-back containers from the supplier.



Reduce- which may help lower your monthly trash bill. Think before printing a document. E-mail information to co-workers instead of using a hard copy. By reducing the amount of material going into your trash bins and increasing the level of recycling, you will have immediate impact on your monthly trash rate.

Reuse- Encourage employees to re-use. Use paper already printed on one side for notes or printing drafts on the other. Bring your lunch to work in reusable containers. Drink coffee out of mug or bring a travel mug with you to the coffee shop.

Need to assess your recycling services?

Schedule a free commercial audit by calling Waste Management customer service at (310) 830-7100.



Waste Management Customer Service
Phone: (310) 830-7100
Email: wmservice@wm.com
Web: business.wm.com/manhattan-beach

