



Manhattan Beach • Winter 2018 Residential Recycling News



SMALL STEPS CAN GO A LONG WAY TO REDUCE WASTE THIS SEASON

Nothing says “Happy Holidays” like lots and lots of food! Unfortunately, those holiday feasts often end with a lot of waste. According to the U.S. Environmental Protection Agency (EPA) between Thanksgiving and New Year’s Day, the volume of household waste in the U.S. increases about 25 percent — That’s one million extra tons.

Tips for reducing food waste:

- Shop Smart. Plan meals, use grocery lists, and avoid impulse buys.
- Buy exactly what you need. Buy loose produce instead of packaged, and buy grains, nuts, and spices from bulk bins.
- Practice “First In, First Out:” When unpacking groceries, move older products to the front and place newer items in the back of the fridge/freezer/pantry.

Holidays Waste Management Observes the following:

- New Year’s Day
- Memorial Day
- Independence Day
- Labor Day
- Thanksgiving Day
- Christmas Day

***Residential collection service will be delayed one day following the above holidays. If a holiday falls on a Saturday or Sunday, there will be no delay.**

Holiday Tree & Light Recycling

Between **December 26, 2018 and January 12, 2019**, single and multi-family residents may place holiday trees next to their carts/bins by 7:00 AM on collection day for free pick up and recycling.

- *Trees must be no taller than 7 feet long or cut into 7-foot sections.*
- *Please remove all decorations including tinsel, lights, ornaments and tree stands.*
- *Flocked trees will be collected but cannot be recycled.*

Need to recycle holiday lights? Contact **At Your Door Hazardous Waste Collection** for a doorstep pick up of household hazardous waste, including unwanted holiday lights (which are e-waste). Call (800) 449-7587 M-F, from 5:00 AM – 5:00 PM, to schedule a pick up.

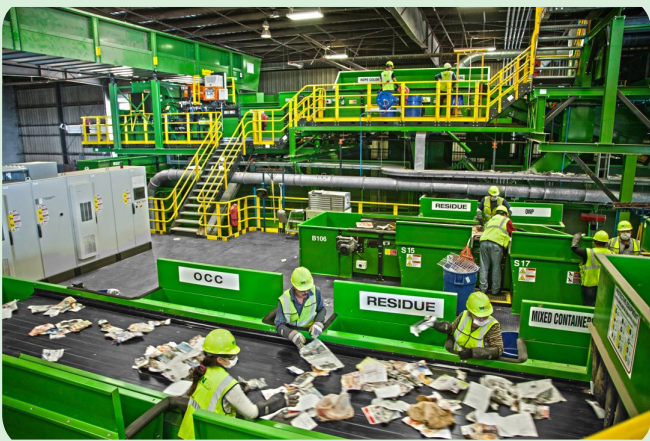
Got Cardboard?

After all of the gifts have been opened and you’re ready to get rid of those empty cardboard boxes, please break them down before placing them in your recycling cart. That way, there will be plenty of room for all of your other recyclables!



Waste Management Facility Tour Dates

Learn more about what happens to material after it leaves the curb! Visit the [Azusa MRF](#) (Material Recovery Facility) to learn about what happens to recyclable material in your blue cart and visit the [CRe® facility](#) (2050 N. Glassell, Orange, CA 92865) to learn more about what happens to the food waste placed in your green cart. Please note, tour attendees must be over the age of 14 and wear closed toe shoes. Space is limited. Please email askgreen@wm.com or call (310) 924-0402 to confirm your attendance.



2019 Facility Tour Dates and Locations:

Monday, September 16th at 10:00 AM
[Azusa Material Facility](#)

(Learn about what happens to the material in your blue recycling cart)

1501 W. Gladstone Ave., Azusa, CA 91702

Monday, October 21st at 10:00 AM
[Orange County Recycling Center—](#)
[CRe® Facility](#)

(Learn about what happens to the food waste in your green cart)

2050 N. Glassell, Orange, CA 92865

Monday, November 18th at 10:00 AM
[Azusa Material Facility](#)

(Learn about what happens to the material in your blue recycling cart)

1501 W. Gladstone Ave., Azusa, CA 91702

FREE Composting Classes

Join us at the Manhattan Beach Botanical Garden inside Polliwog Park for a FREE one hour class to learn about backyard composting and our curbside food scraps program! All levels are welcome, classes are free, open to the public and reservations are not necessary. For more information, please call Waste Management Customer Service at (310) 830-7100 or visit home.wm.com/manhattan-beach. Discount bins are available to Manhattan Beach residents for purchase year round (please call Waste Management Customer Service to order).



2019 Composting Class Schedule:

All classes start at **10:00 AM** at the
Botanical Garden in Polliwog Park
1601 Manhattan Beach Blvd (at Peck Ave):

Saturday, May 14, 2019

Saturday, July 13, 2019

Saturday, October 12, 2019

At Your Door Special Collection



Waste Management's At Your Door Special CollectionSM program makes it easy for Manhattan Beach residents to dispose of items like household

chemicals, garden chemicals, and paint products. The materials are collected right at your front door, simply call (800) 449-7587 to schedule your pick up.

BULKY Item Curbside Collection Program

Start the New Year fresh with free bulky item pick-up! Single and multi-family residents can schedule up to three (3) free bulky item pick-ups per year. Bulky items will be collected at the curb on your regular service day (up to three items per pick-up).

Acceptable Bulky Waste Items: furniture, appliances, electronic equipment (e-waste), tires, car motor parts, wood waste, tree branches, and scrap wood.

Unacceptable Items: Household hazardous waste (such as paint, oil and batteries), spas, camper shells, cast iron bathtubs, items requiring more than two persons to safely handle.

Bulky items cannot exceed eight feet in length, four feet in width or 150 pounds. Please contact Waste Management Customer Service at least 48 hours in advance of your regular service day to schedule the pick-up.



Turn Your Food Waste into Renewable Energy!

Our Residential Food Waste Program is as Easy As 1-2-3!



1. Put food scraps in a bag

2. Tie the bag

3. Put the bag of food scraps inside your green waste cart



You Can Use Any Plastic Bag

Reuse a bread, tortilla, or packaging bag, biodegradable or decomposable.



What happens to it?

The food scraps and bags are placed in a large centrifuge at the Waste Management CORE[®] facility, where it's converted to an Engineered BioSlurry (EBS). The EBS is then transported to the Carson Wastewater Treatment Plant, placed inside an anaerobic digester and converted into energy!

What Goes in Your Cart?



Blue Cart

Yes to Recycle...



- Corrugated Cardboard (Flattened)
- Newspaper, Office Paper, Magazines, Junk Mail, Telephone Books, Paper Bags
- Plastic Bottles & Containers (Empty, dry)
- Glass Bottles & Jars (Empty, dry)
- Aluminum, Tin & Steel Cans (Empty, no food)
- Cereal & Food Boxes, Egg Cartons



Green & Food Waste Cart

Yes to Recycle...



- Grass Clippings (Loose, not bagged)
- Tree Limbs & Branches (4 inches maximum in diameter)
- Brush, Tree Leaves & Trimmings (Loose, not bagged)
- Wood Lumber Waste (Natural untreated wood)

All Food Waste should be bagged

- Fruits/Vegetables
- Meat/Poultry/Seafood

Items requiring special handling

- **TV's, Computers & Electronics**



(Schedule a pick up with At Your Door Special Collection 800- 449-7587).

- **Household & Vehicle Batteries**



(Schedule a pick up with At Your Door Special Collection 800- 449-7587).

- **Fluorescent Tubes & Light Bulbs** (Schedule a pick up with At Your Door Special Collection 800- 449-7587).

- **Motor Oil & Filters**

(Schedule a pick up with At Your Door Special Collection 800- 449-7587).



- **Clothing or Textiles** (Donate to local thrift store).

- **Household Hazardous Waste** (Schedule a pick up with At Your Door Special Collection 800- 449-7587).

- **Needles** (Enroll in the free Sharps Disposal Program : Residents simply contact Waste Management at 310-830-7100, request a "Mail-Back Sharps Kit" and one will be delivered to your home.

DO NOT Place in the Blue OR Green Cart....

- **NO Plastic Bags** (Reuse or return to local grocery store) & **Shrink Wrap** (To gray trash cart)
- **NO Polystyrene Foam Cups & Containers** (To gray trash cart)
- **NO Clothing or Shoes** (To thrift store)
- **NO Garden Hoses, Cables & Plastic Straps** (To gray trash cart)
- **NO Tires**
- **NO Treated Wood, Painted, Stained Lumber** (To landfill, identify load at scale)
- **NO Vines, Ice Plant & Palm Fronds** (To gray trash cart)
- **NO Dirt, Sod & Ashes** (To landfill, ashes cold)

