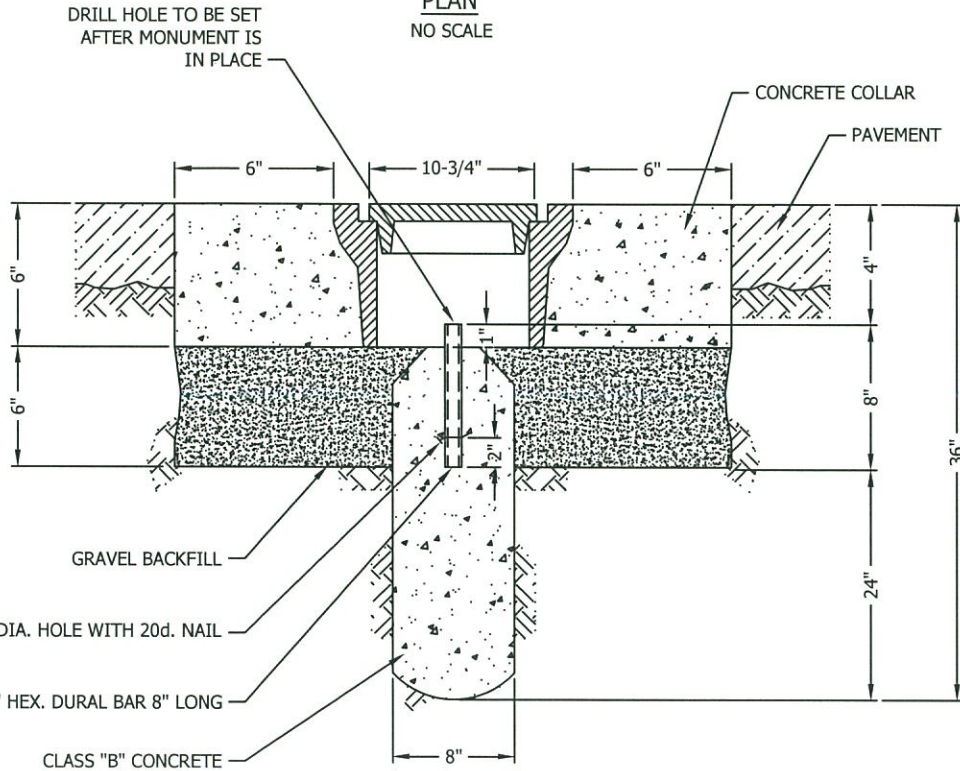


PLAN
NO SCALE



SECTION
NO SCALE

NOTES

1. MONUMENT HANDHOLE FRAME AND COVER SHALL BE ALHAMBRA FOUNDRY NO. A-2925 OR APPROVED EQUAL.
2. THE 1" HEXAGONAL 2024 ALUMINUM BAR SHALL BE DRILLED WITH 3/16" DIA. HOLE 2" FROM BOTTOM AND A 20d. NAIL INSERTED TO FORM ANCHOR.
3. FRAME AND COVER SHALL BE BITUMINOUS PAINTED BY FOUNDRY.
4. GRAVEL BACKFILL SHALL BE NO. 3 ROCK HAND TAMPED IN PLACE.



DATE REVISED
05/15/2019

**CITY OF MANHATTAN BEACH
DEPARTMENT OF PUBLIC WORKS**

MONUMENT IN ROADWAY

APPROVED BY
[Signature]
PREM KUMAR, CITY ENGINEER

5/16/19
DATE

STANDARD PLAN NUMBER
MBSI-170A-0 (ST-4)

SHEET 1 OF 1