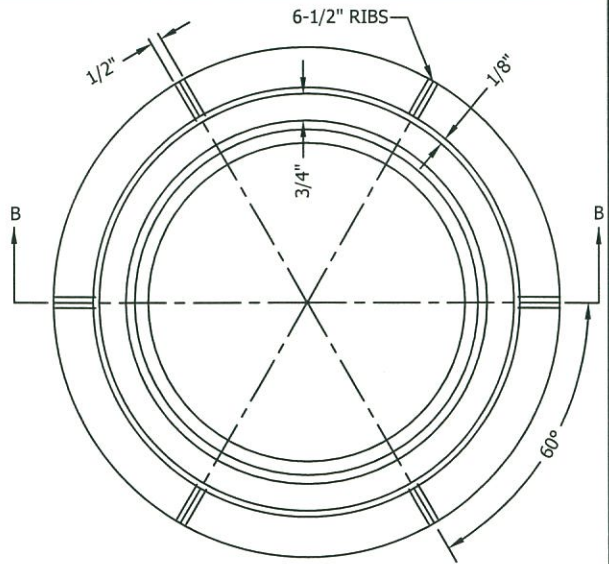
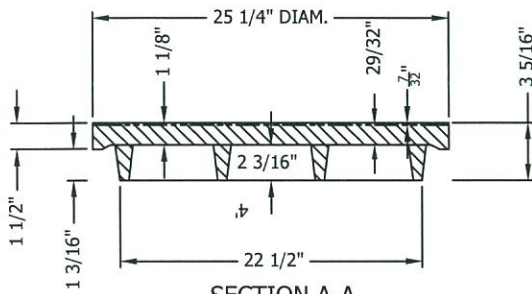


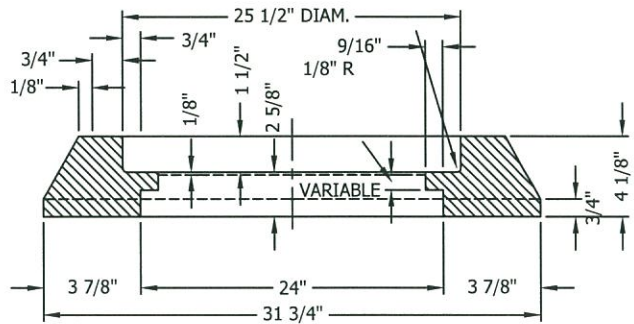
PLAN OF COVER
TOP VIEW



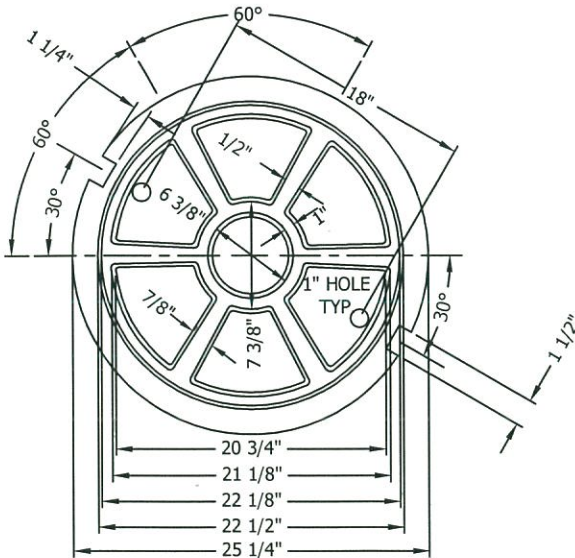
PLAN OF FRAME



SECTION A-A



SECTION B-B



PLAN OF COVER
BOTTOM VIEW

NOTES

1. THE CAST IRON USED SHALL CONFORM WITH ASTM A-48, CLASS 35B.
2. THE FRAME AND COVER SHALL BE COATED WITH ASPHALTUM OR BITUMINOUS PAINT AFTER TESTING AND INSPECTION.
3. A FOUNDRY IDENTIFICATION MARK AND DATE SHALL BE LOCATED ON THE BOTTOM OF COVER AND INSIDE OF THE FRAME.
4. FRAME AND COVER SHALL BE MACHINED TO FIT AND SHALL BE LONG BEACH IRON WORKS' X-160 OR APPROVED EQUAL WITH NO LOCKING FEATURES.
5. WEIGHT OF FRAME SHALL BE 160 POUNDS (73 kg). WEIGHT OF COVER SHALL BE 200 POUNDS (91 kg). ACTUAL WEIGHTS SHALL BE WITHIN A RANGE OF 95% TO 110%.



DATE REVISED
5/15/2019

**CITY OF MANHATTAN BEACH
DEPARTMENT OF PUBLIC WORKS**

24" SEWER MANHOLE FRAME AND COVER

APPROVED BY

PREM KUMAR, CITY ENGINEER

[Signature]
5/16/19
DATE

STANDARD PLAN NUMBER

MBSS-210A-0(ST-19)

SHEET 1 OF 1