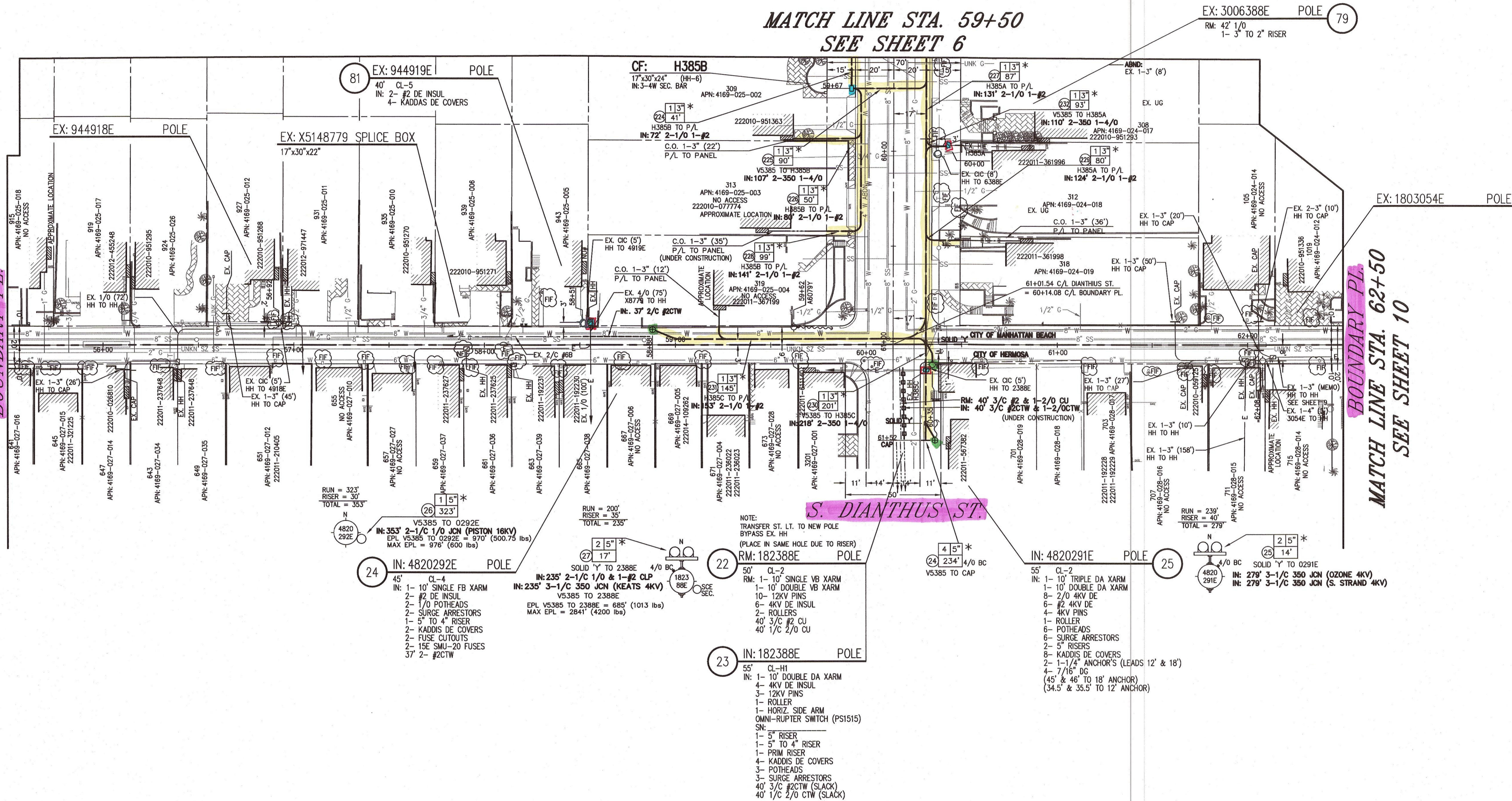


MATCH LINE STA. 59+50
SEE SHEET 6

MATCH LINE STA. 55+50
SEE SHEET 8
BOUNDARY PL.

BOUNDARY PL.
MATCH LINE STA. 62+50
SEE SHEET 10



- 24 IN: 4820292E POLE
45' CL-4
IN: 1-10' SINGLE FB XARM
2-#2 DE INSUL
2-1/0 POTHEADS
2- SURGE ARRESTORS
1- 5' TO 4" RISER
2- KADDIS DE COVERS
2- FUSE CUTOUTS
7- 15E SMI-20 FUSES
37- 2- #2CTW
- IN: 235' 2-1/C 1/0 JCN (PISTON 16KV)
EPL V5385 TO 0292E = 970' (500.75 lbs)
MAX EPL = 976' (600 lbs)
- IN: 235' 3-1/C 350 JCN (KEATS 4KV)
V5385 TO 2388E
EPL V5385 TO 2388E = 685' (1013 lbs)
MAX EPL = 2841' (4200 lbs)

- 23 IN: 182388E POLE
55' CL-HH
IN: 1-10' DOUBLE DA XARM
4- 4KV DE INSUL
3- 12KV PINS
1- ROLLER
1- HORIZ. SIDE ARM
OMNI-RUPTER SWITCH (PS1515)
SN:
1- 5" RISER
1- 5' TO 4" RISER
1- PRIM RISER
4- KADDIS DE COVERS
3- POTHEADS
3- SURGE ARRESTORS
40 3/0 #2CTW (SLACK)
40 1/0 2/0 CTW (SLACK)

- 22 RM: 182388E POLE
50' CL-2
RM: 1-10' SINGLE VB XARM
1-10' DOUBLE VB XARM
10- 12KV PINS
6- 4KV DE INSUL
2- ROLLERS
40 3/0 #2 CU
40 1/0 2/0 CU

- 25 IN: 4820291E POLE
55' CL-2
IN: 1-10' TRIPLE DA XARM
1-10' DOUBLE DA XARM
8- 2/0 4KV DE
6- 2/0 4KV DE
2- 4KV DE
4KV PINS
1- ROLLER
6- POTHEADS
6- SURGE ARRESTORS
5- RISERS
8- KADDIS DE COVERS
2- 1-1/4" ANCHOR'S (LEADS 12' & 18')
4- 7/16" DG
(45' & 48' TO 18' ANCHOR)
(34.5' & 35.5' TO 12' ANCHOR)

SURVEYED
DATE: 2/23/18

WARNING:
-WATER, CATV AND TELEPHONE LOCATIONS ARE APPROXIMATE POTHOLE FOR EXACT LOCATION

DATE	REVISION DESCRIPTION	APPROVED	DRAWN	CHECKED
8/23/19	MINOR ADDITION MATERIALS AND TEXT CHANGES	ST	TT	TT

DISTRICT	44-SOUTH BAY	PROJ. MGR.	ROBERT CICCARELLI	PLANNER	SUSIE THOMPSON	SR NO.	2446859
FOREMAN		PHONE	714-430-7842	PHONE	310-608-5234	DESIGN NO.	995028
CSD 140 Y CODE		INVENTORY MAP NO.	4363C2	THOMAS GUIDE	LAC 732	ASSOCIATED DESIGN NO.	995028
PRODUCT/SAP NO.	TD 1351127	PRODUCT/SAP NO.	TD 1351129	PRODUCT/SAP NO.			
F	S. THOMPSON	8/15/19	D. ESTRADA	TT	52828	PROPOSED CONSTRUCTION (LOCATION) PISTON 16KV % MANHATTAN SUB-R20B	
P		10/23/18	D. ESTRADA	TT	52828	VARIOUS LOCATIONS - UJAD #4	
B		05/01/18	QUES/ES/IT/SL	QUES/SV/ES	52813	MANHATTAN BEACH, CA	
TYPE APPROVED BY	DATE	CHECKED BY	DRAWN BY	PAX #	SHEET	JOB NO.	
					9	0995026	



UNDERGROUND SERVICE ALERT
Dial 811
Call USA
For Underground Locating
2 Working Days Before You Dig

SCALE: 1" = 30' ft
0 30 60

FINAL DESIGN
APPROVED FOR CONSTRUCTION

MATCHLINE "C" SEE SHEET 6

S. DIANTHUS ST

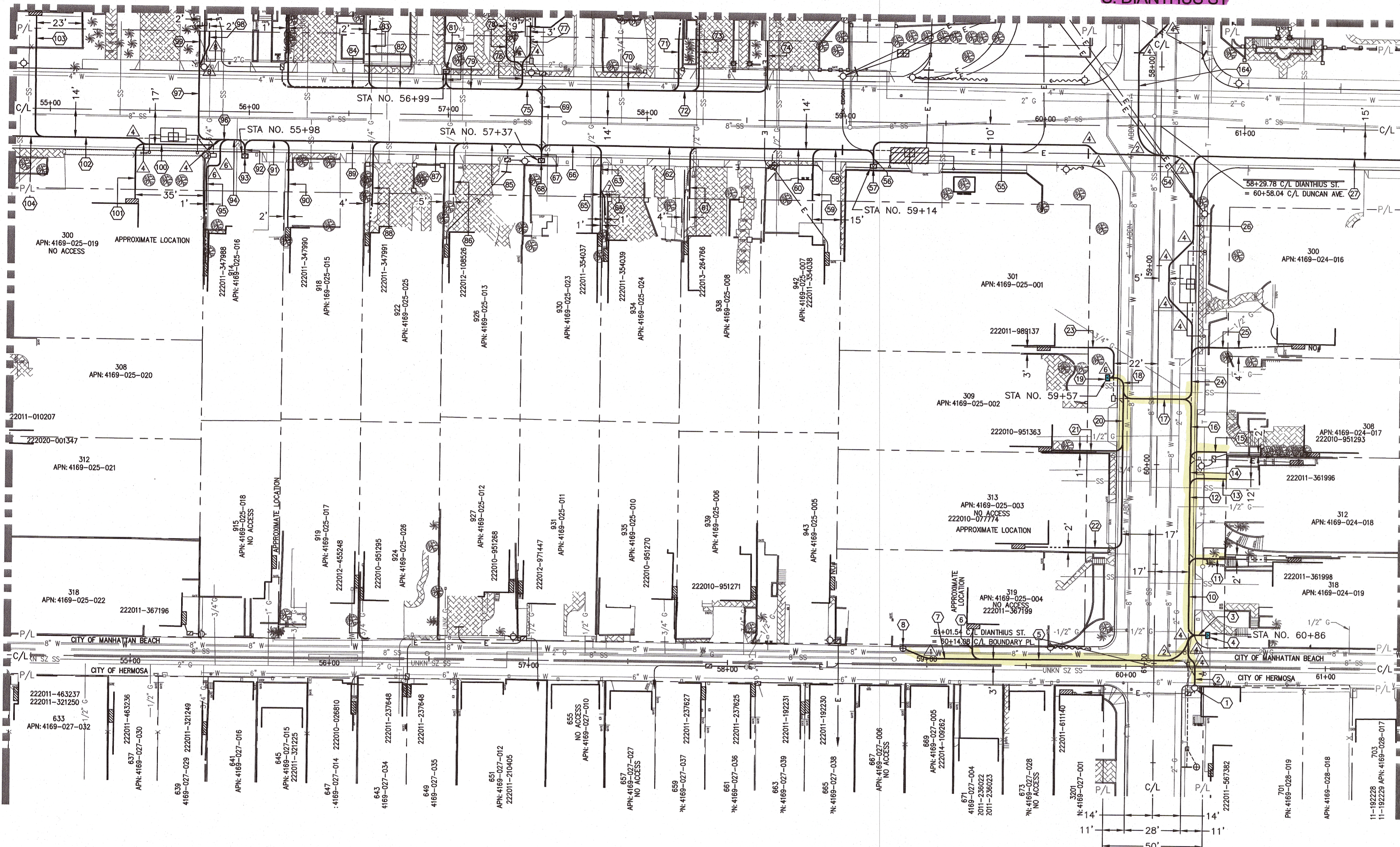
MATCHLINE "B" SEE SHEET 02

BOUNDARY PL

DUNCAN AVE

MATCHLINE "D" SEE SHEET 04

BOUNDARY PL



S. DIANTHUS ST

ALL ANGLE INFORMATION FOR THE CONDUIT IS AS FOLLOWS UNLESS OTHERWISE NOTED BELOW

CURVE DATA			
DELTA	RADIUS	TANGENT	LENGTH
90°	4'	5.65'	6.28'

CURVE DATA				
CURVE	DELTA	RADIUS	TANGENT	LENGTH
1	23°	15'	5.86'	5.90'
2	90°	12.5'	17.69'	19.65'
4	45°	4'	3.06'	3.15'
6	90°	2'	2.83'	3.14'
7	31°	4'	2.14'	2.16'
8	25°	4'	1.71'	1.72'



SCALE = 1"=30'

- | | |
|---|--|
| <p>ITEM # DESCRIPTION</p> <ol style="list-style-type: none"> 1. TIE INTO EXISTING POLE# 182388E 2. 28' (2)-4" SCH PVC CONDUITS
TL = POLE# 182388E TO PB 'A' = 34' V 3. 6' (6)-4" SCH PVC CONDUITS
6' (4)-2" SCH PVC CONDUITS 4. PL PB 'A'
TWC (A6001640APCX18)
2'X3' 5. 114' (2)-4" SCH PVC CONDUITS
114' (1)-2" SCH PVC CONDUIT 6. 9' (1)-2" SCH PVC CONDUIT
TL = PB 'A' TO ADDRESS #
319 S. DIANTHUS ST = 129' V 7. 38' (2)-4" SCH PVC CONDUITS
TL = PB 'A' TO POLE# N/T = 158' V 8. TIE INTO EXISTING POLE# N/T 9. ----- 10. 37' (2)-4" SCH PVC CONDUITS
37' (3)-2" SCH PVC CONDUITS 11. 20' (1)-2" SCH PVC CONDUIT
TL = PB 'A' TO ADDRESS #
318 S. DIANTHUS ST = 63' V 12. 40' (2)-4" SCH PVC CONDUITS
40' (2)-2" SCH PVC CONDUITS 13. 20' (1)-2" SCH PVC CONDUIT
TL = PB 'A' TO ADDRESS #
312 S. DIANTHUS ST = 103' V 14. 14' (2)-4" SCH PVC CONDUITS
14' (1)-2" SCH PVC CONDUIT 15. 20' (1)-2" SCH PVC CONDUIT
TL = PB 'A' TO ADDRESS #
308 S. DIANTHUS ST = 117' V 16. 32' (2)-4" SCH PVC CONDUITS
TL = PB 'A' TO PB 'B' = 174' 17. 32' (8)-4" SCH PVC CONDUITS
32' (1)-2" SCH PVC CONDUIT 18. 13' (8)-4" SCH PVC CONDUITS
13' (3)-2" SCH PVC CONDUITS 19. PL PB 'B'
TWC (A6001640APCX18)
2'X3' 20. 26' (2)-2" SCH PVC CONDUITS 21. 20' (1)-2" SCH PVC CONDUIT
TL = PB 'B' TO ADDRESS #
309 S. DIANTHUS ST = 59' V 22. 69' (1)-2" SCH PVC CONDUIT
TL = PB 'B' TO ADDRESS #
313 S. DIANTHUS ST = 118' V 23. 28' (1)-2" SCH PVC CONDUIT
TL = PB 'B' TO ADDRESS #
301 S. DIANTHUS ST = 28' V 24. 24' (6)-4" SCH PVC CONDUITS
24' (1)-2" SCH PVC CONDUIT 25. 20' (1)-2" SCH PVC CONDUIT
TL = PB 'B' TO ADDRESS #
300 S. DIANTHUS ST = 69' V 26. 97' (6)-4" SCH PVC CONDUITS 27. 196' (2)-4" SCH PVC CONDUITS
TL = PB 'B' TO PB 'C' = 443' V | <p>ITEM # DESCRIPTION</p> <ol style="list-style-type: none"> 55. 153' (2)-4" SCH PVC CONDUITS
TL = PB 'B' TO PB 'E' = 346' V 56. 4' (4)-4" SCH PVC CONDUITS
4' (2)-2" SCH PVC CONDUITS 57. PL PB 'E'
TWC (A6001640APCX18)
2'X3' 58. 29' (2)-4" SCH PVC CONDUITS
29' (2)-2" SCH PVC CONDUITS 59. 28' (1)-2" SCH PVC CONDUIT
TL = PB 'E' TO ADDRESS #
942 DUNCAN AVE = 61' V 60. 62' (2)-4" SCH PVC CONDUITS
62' (1)-2" SCH PVC CONDUIT 61. 28' (1)-2" SCH PVC CONDUIT
TL = PB 'E' TO ADDRESS #
938 DUNCAN AVE = 113' V 62. 53' (2)-4" SCH PVC CONDUITS
TL = PB 'E' TO PB 'F' = 190' V 63. 23' (2)-2" SCH PVC CONDUITS 64. 5' (1)-2" SCH PVC CONDUIT
TL = PB 'F' TO ADDRESS #
934 DUNCAN AVE = 56' V 65. 4' (1)-2" SCH PVC CONDUIT
TL = PB 'F' TO ADDRESS #
930 DUNCAN AVE 55' V 66. 28' (2)-4" SCH PVC CONDUITS
28' (2)-2" SCH PVC CONDUITS 67. 4' (6)-4" SCH PVC CONDUITS
4' (4)-2" SCH PVC CONDUITS 68. PL PB 'F'
TWC (A6001640APCX18)
2'X3' 69. 34' (2)-4" SCH PVC CONDUITS
TL = PB 'F' TO PB 'G' = 91' V 70. 69' (3)-2" SCH PVC CONDUITS 71. 28' (1)-2" SCH PVC CONDUIT
TL = PB 'G' TO ADDRESS #
935 DUNCAN AVE = 150' V 72. 10' (2)-2" SCH PVC CONDUITS 73. 28' (1)-2" SCH PVC CONDUIT
TL = PB 'G' TO ADDRESS #
939 DUNCAN AVE = 160' V 74. 62' (1)-2" SCH PVC CONDUIT
TL = PB 'G' TO ADDRESS #
943 DUNCAN AVE = 194' V 75. 10' (2)-4" SCH PVC CONDUITS
10' (3)-2" SCH PVC CONDUITS 76. 12' (2)-2" SCH PVC CONDUITS 77. 18' (1)-2" SCH PVC CONDUIT
TL = PB 'G' TO ADDRESS #
931 DUNCAN AVE = 73' V 78. 22' (1)-2" SCH PVC CONDUIT
TL = PB 'G' TO ADDRESS #
927 DUNCAN AVE = 77' V 79. 37' (2)-4" SCH PVC CONDUITS
37' (5)-2" SCH PVC CONDUITS |
|---|--|

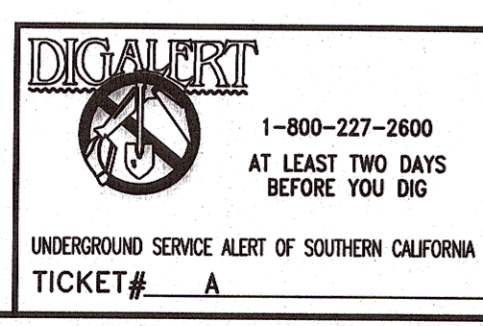
CITY PERMIT INFORMATION	
EXCAVATION DATA	
CONDUIT IN JOINT TRENCH	1711'
CONDUIT OUT OF JOINT TRENCH	677'
TOTAL FOOTAGE THIS SHEET	2388'
PB 2'X3' (A6001640APCX18)	6 E.A.
PB TRAFFIC RATED 2'X3' (TR2436)	0 E.A.

LEGEND	
	PROP. TRENCH
	PROP. CATV VAULT
	SCE JOINT TRENCH
	EX. POLE
	EX. SEWER MANHOLE
	EX. SEWER
	EX. GAS
	EX. WATER
	EX. STORM DRAIN
	EX. TELEPHONE
	EX. TRAFFIC SIGNAL
	CL CENTER LINE
	R/W RIGHT OF WAY
	C&G CURB & GUTTER
	CONCRETE STREET PAVING

- | | |
|--------|---|
| ITEM # | DESCRIPTION |
| 80. | 6' (2)-4" SCH PVC CONDUITS
6' (7)-2" SCH PVC CONDUITS |
| 81. | PL PB 'G'
TWC (A6001640APCX18)
2'X3' |
| 82. | 37' (2)-2" SCH PVC CONDUITS |
| 83. | 29' (1)-2" SCH PVC CONDUIT
TL = PB 'G' TO ADDRESS #
923 DUNCAN AVE = 72' V |
| 84. | 70' (1)-2" SCH PVC CONDUIT
TL = PB 'G' TO ADDRESS #
915 DUNCAN AVE = 113' V |
| 85. | 42' (2)-4" SCH PVC CONDUITS
42' (2)-2" SCH PVC CONDUITS |
| 86. | 28' (1)-2" SCH PVC CONDUIT
TL = PB 'F' TO ADDRESS #
926 DUNCAN AVE = 76' V |
| 87. | 41' (2)-4" SCH PVC CONDUITS
41' (1)-2" SCH PVC CONDUITS |

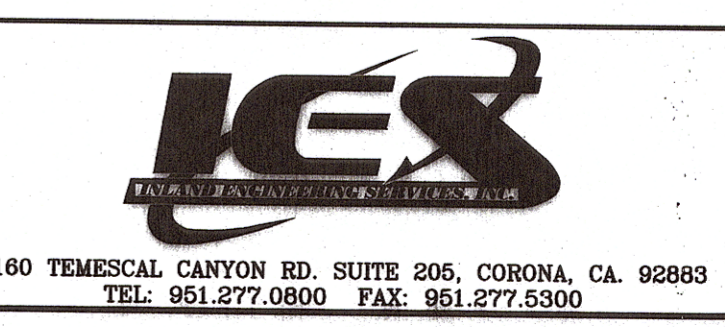
- | | |
|--------|---|
| ITEM # | DESCRIPTION |
| 88. | 28' (1)-2" SCH PVC CONDUIT
TL = PB 'F' TO ADDRESS #
922 DUNCAN AVE = 117' V |
| 89. | 50' (2)-4" SCH PVC CONDUITS
TL = PB 'F' TO PB 'H' = 163' V |
| 90. | 28' (1)-2" SCH PVC CONDUIT
TL = PB 'H' TO ADDRESS #
918 DUNCAN AVE = 52' V |
| 91. | 20' (2)-4" SCH PVC CONDUITS
20' (1)-2" SCH PVC CONDUIT |
| 92. | 4' (8)-4" SCH PVC CONDUITS
4' (6)-2" SCH PVC CONDUITS |
| 93. | PL PB 'H'
TWC (A6001640APCX18)
2'X3' |
| 94. | 11' (6)-4" SCH PVC CONDUITS
11' (5)-2" SCH PVC CONDUITS |
| 95. | 33' (1)-2" SCH PVC CONDUIT
TL = PB 'H' TO ADDRESS #
914 DUNCAN AVE = 48' V |

- | | |
|--------|---|
| ITEM # | DESCRIPTION |
| 96. | 3' (6)-4" SCH PVC CONDUITS
3' (4)-2" SCH PVC CONDUITS |
| 97. | 46' (2)-2" SCH PVC CONDUITS |
| 98. | 19' (1)-2" SCH PVC CONDUIT
TL = PB 'H' TO ADDRESS #
915 DUNCAN AVE = 83' V |
| 99. | 18' (1)-2" SCH PVC CONDUIT
TL = PB 'H' TO ADDRESS #
911 DUNCAN AVE = 82' V |
| 100. | 39' (6)-4" SCH PVC CONDUITS
39' (2)-2" SCH PVC CONDUITS |
| 101. | 25' (1)-2" SCH PVC CONDUIT
TL = PB 'H' TO ADDRESS #
300 S. POINSETTA AVE = 128' V |
| 102. | 53' (6)-4" SCH PVC CONDUITS
53' (1)-2" SCH PVC CONDUIT |
| 103. | 57' (1)-2" SCH PVC CONDUIT
TL = PB 'H' TO ADDRESS #
214 S. POINSETTA AVE = 177' V |
| 164. | 87' (2)-4" SCH PVC CONDUITS
TL = PB 'B' TO PB 'N' = 301' V |

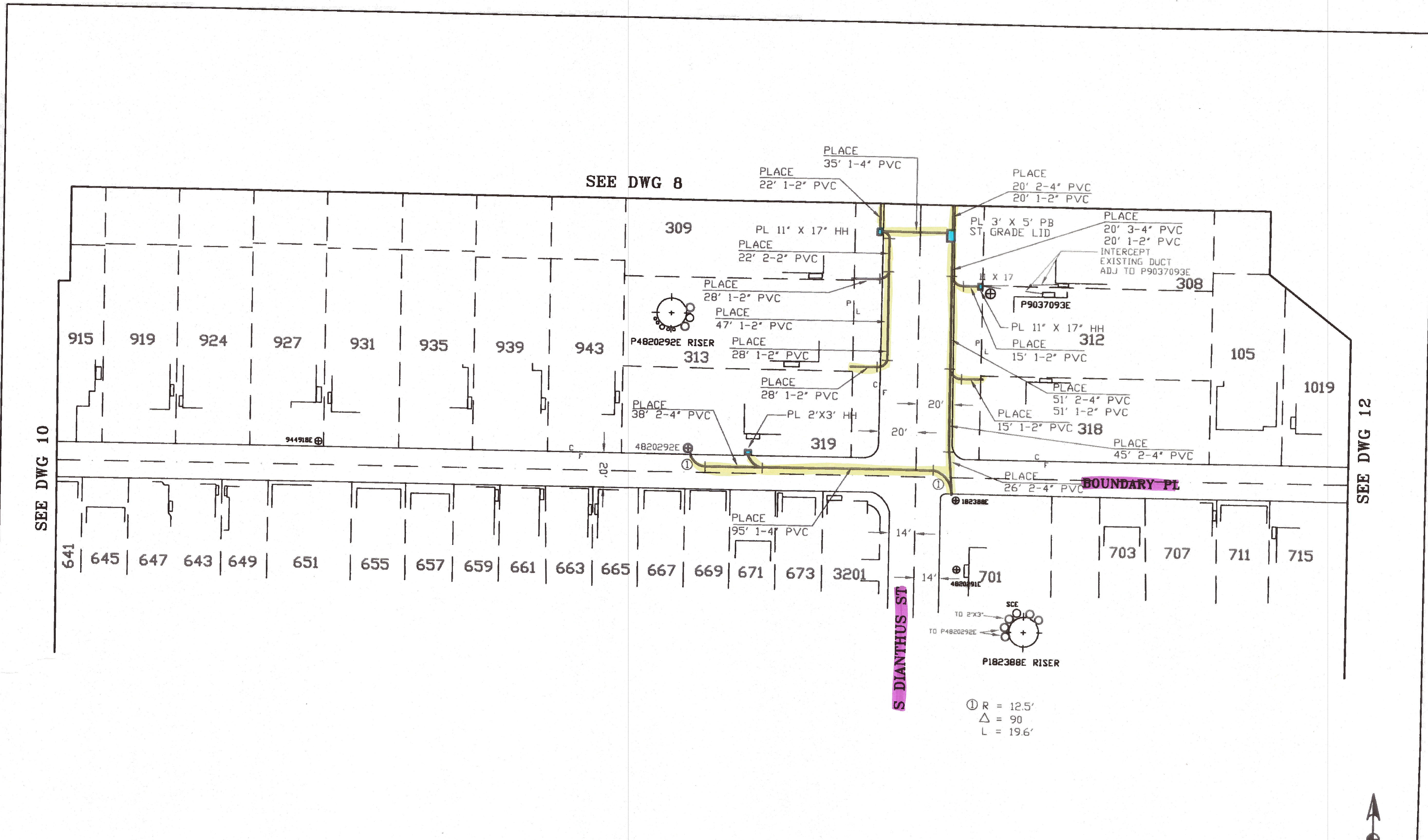


CADASTRAL MAP #	XXX-XX	DRAWN BY:	IES
DRAINAGE MAP #	XXX-XX	FIELD BY:	IES
PLANS & PROFILES #	XXX-XX	JOB SQ. FT.	---
SEWER INDEX #	XXX-XX	STREET TYPE	LOCAL STREET
SUBSTRUCTURES MAP #	XXX-XX	TEL. NO.:	(951) 277-0800
THOMAS GUIDE PG-GRID #	732-G7	E-MAIL:	jrjos@inland-engineering.com

REVISIONS	
Charter Spectrum	1628 VALLEY RD HERMOSA BEACH, CA 90264 UTILITY NUMBER: 6874



CITY OF MANHATTAN BEACH	PROJECT: PID# 1218784
WORK LOCATION:	DUNCAN AVE, BOUNDARY PL & S. DIANTHUS ST



SEE DWG 8

SEE DWG 10

SEE DWG 12

Ⓞ R = 12.5'
 △ = 90
 L = 19.6'



REMARKS
 NOTE ALL SWEEPS 5' UNLESS NOTED

ENGINEER HAYES

WORK ORDER 70076 5239269
 DRAWING 11 OF 12

