



**CITY OF MANHATTAN BEACH CITY HALL**

1400 Highland Avenue, Manhattan Beach, CA 90266

**WEBSITE:** [www.citymb.info](http://www.citymb.info) • **PHONE:** (310) 802-5000

**TO:** Honorable Mayor and Members of the City Council

**FROM:** Carrie Tai, Community Development Director

**MEETING:** City Council Regular Meeting, November 17, 2020

**SUBJECT:** Agenda Item No. 16 – Increasing the Default Renewable Energy Tier for Power Customers in the City to 100% Renewable Energy Under the Clean Power Alliance of Southern California

**DATE:** November 17, 2020

---

## **SUPPLEMENTAL ATTACHMENT**

**ATTACHMENT(S):**

- 1) PowerPoint Presentation



# CLEAN POWER ALLIANCE

---

NOVEMBER 17, 2020



# CLEAN POWER ALLIANCE

## Who does Clean Power Alliance serve?

Clean Power Alliance is a public entity formed through a Joint Powers Authority (JPA) made up of 32 public agencies across Southern California.

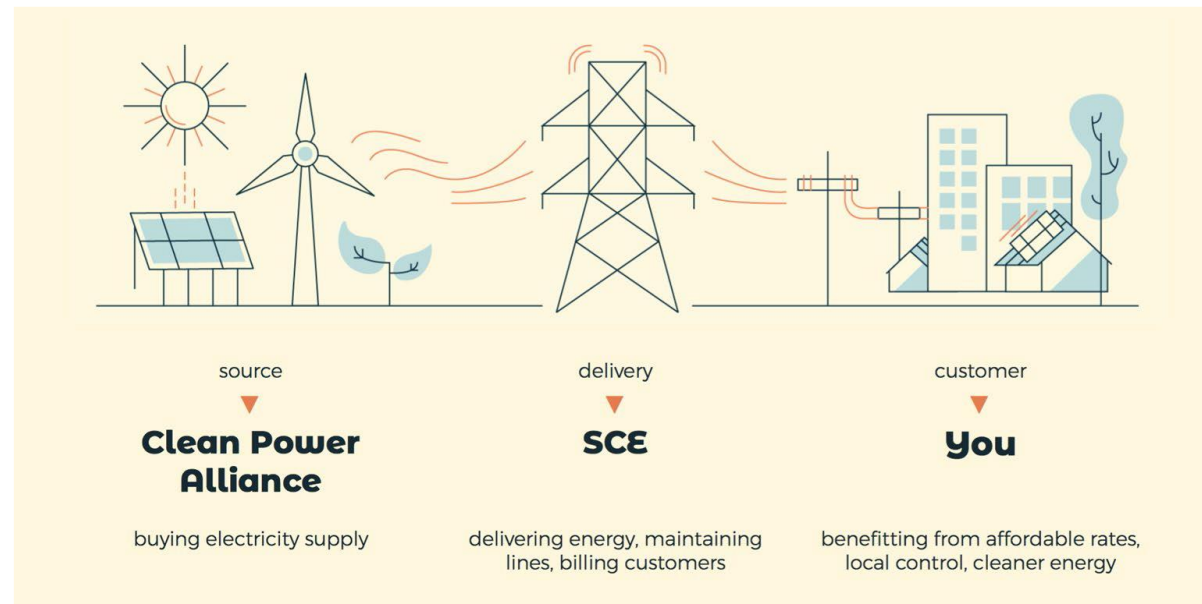
Clean Power Alliance serves approximately 1 million customer accounts representing 3 million residents and businesses. **Manhattan Beach has 14,542 residential customer accounts and 1,922 commercial customer accounts.**



# CLEAN POWER ALLIANCE

Clean Power Alliance is a new electricity supply provider, offering **clean, renewable energy at competitive rates** to our community.

Clean Power Alliance purchases clean power and Southern California Edison (SCE) delivers it.



# PUBLIC OUTREACH

## LOOKING TO MAKE A SIMPLE AND EASY ECO-CHANGE?



**KIM LEWAND MARTIN**  
MANHATTAN BEACH RESIDENT

"I am thrilled our City has partnered with Clean Power Alliance to provide renewable energy to its residents. With one simple phone call, I was able to switch to the 100% Green Power tier for just a few pennies more on the dollar than the 50% tier. Clean energy is one of the most impactful things we residents can do to combat climate change. I encourage everyone to move to the 100% tier as every small action leads to big effects."

[www.citymb.info/cleanpoweralliance](http://www.citymb.info/cleanpoweralliance)



## READY TO REDUCE YOUR CARBON EMISSIONS?



**YOGA LOFT MANHATTAN BEACH**

"The stakes of the current crisis are high, but it pales in comparison to the climate crisis before us if we don't take action. The adoption of green energy is one tremendous and virtually effortless action we can take to move the needle in California. It couldn't have been easier, within 5 minutes we had converted both our home and business."

[www.citymb.info/cleanpoweralliance](http://www.citymb.info/cleanpoweralliance)



# PUBLIC OUTREACH

The City has provided information on community choice energy, and specifically CPA, to the public through a variety of outlets and venues, including:

- Social media
- Website updates
- Ads and articles in local newspapers
- Local Radio shows
- Chamber of Commerce
- Press releases
- Direct mailers to power customers
- Manhattan Beach Farmer's Market booth
- Hometown Fair booth
- City's Older Adults Program newsletter
- Mayor's Town Hall on the Challenge of Climate Change on March 2, 2020
- 100 seniors at a CPA-focused Dine 'N Discover event in January 2019
- Mayor's Town Hall on the Environment in August 2018
- City Council Environmental Sustainability Study Session in January 2018
- Multiple presentations and reports to City Council from 2014-2020



# CPA MEMBER AGENCY DEFAULTS



**Lean Power**

## 36% Renewable Energy

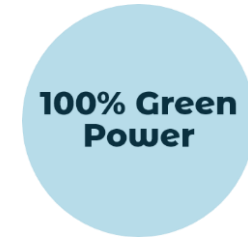
1. Arcadia
2. Calabasas
3. Camarillo
4. Hawthorne
5. Paramount
6. Simi Valley
7. Temple City
8. Westlake Village



**Clean Power**

## 50% Renewable Energy

1. Alhambra
2. Beverly Hills
3. Carson
4. Claremont
5. Downey
6. Hawaiian Gardens
7. Los Angeles County  
Unincorporated
8. Manhattan Beach
9. Moorpark
10. Redondo Beach
11. Whittier



**100% Green Power**

## 100% Renewable Energy

1. Agoura Hills (*effective Oct. 2021*)
2. Culver City
3. Malibu
4. Ojai
5. Oxnard
6. Rolling Hills Estates
7. Santa Monica
8. Sierra Madre
9. South Pasadena
10. Thousand Oaks
11. Ventura
12. Ventura County  
Unincorporated
13. West Hollywood



# MB CUSTOMER SUMMARY

Manhattan Beach Customer Opt Actions	Opt 100% Green (%)	Opt Clean (%)	Opt Lean (%)	Opt Out (%)
Non-Residential	5.11%	0.00%	1.15%	4.85%
Residential	0.71%	0.00%	2.46%	3.62%

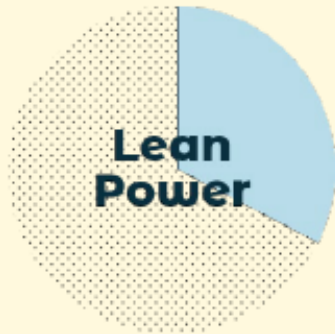
All CPA Customer Opt Actions	Opt 100% Green (%)	Opt Clean (%)	Opt Lean (%)	Opt Out (%)
Non-Residential				
Lean Power Jurisdictions	0.30%	0.09%	N/A	6.47%
Clean Power Jurisdictions	0.41%	N/A	1.0%	4.90%
100% Green Power Jurisdictions	N/A	0.95%	5.28%	11.44%
Residential				
Lean Power Jurisdictions	0.21%	0.13%	N/A	6.46%
Clean Power Jurisdictions	0.20%	N/A	1.76%	4.54%
100% Green Power Jurisdictions	N/A	1.01%	4.59%	9.34%

As of November 10, 2020





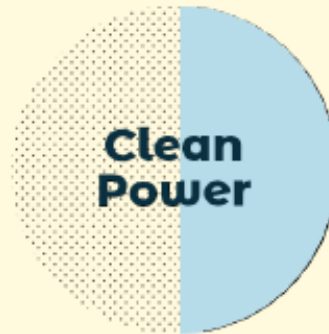
# CPA RATE PRODUCT OPTIONS



**Lean Power** provides 36% renewable energy content at the lowest possible cost, with the added benefit of local management and control.

1%-2% savings as compared to SCE base rates.

Your current default selection



**Clean Power** provides 50% renewable energy content and the opportunity to build a cleaner future, all at cost-competitive rates.

0%-1% savings as compared to SCE base rates.



**100% Green Power** provides 100% renewable energy content allows you to support the environment—leading the way to a greener future

7-9% premium as compared to SCE base rates.



# CLEAN POWER ALLIANCE

## Default Change Implementation Process

- CPA's Policy requires advance notice of a default change decision:
  - In 2021, **January 1** is the deadline for a default change decision that that would go into effect later that year
- The default change will take place in **October** to coincide with the change from summer (higher) to winter (lower) rates
- CPA will send two notices to customers about a default change, with info on rate options and customers ability to stay on their current rate product.
  - If a default change occurs, CPA would work with Manhattan Beach to use City co-branding in customer communications.
  - Customers' prior choices will not be overridden.



# CPA CHOICE TOOLS

**Customers will have access to same tools and ability to change rates, stay on their current rate, or opt out of CPA**

## Calculate & Compare

See what your bill could look like with different Clean Power Alliance and Southern California Edison (SCE) service offerings using the calculator tool below. Click the orange question icons for guidance on where to find each input on your bill.

**Rate**

DOMESTIC ?

**Service Location**

Unincorporated Los Angeles Cr ?

**Bill Ending Month**

November ?

**Winter - Baseline Usage (kWh) ?**

Tier 1

Tier 2

High Usage Charge

**Click Here to Compare Your Bill**

Cleanpoweralliance.org

## Confirm Your Enrollment or Change Your Rate

Fill out the form below to check if you're currently enrolled in Clean Power Alliance, what rate option your community has selected, and to change your rate.

### Enter Account Information

SCE Customer Account Number (Required)

Please enter your 10-digit SCE Customer Accou ?

[Click here to see a sample bill](#)

Your Last Name or Business Name (Required)

Enter at least the first three letters ?

Service Location ZIP Code (Required)

Please enter your ZIP Code as it appears on you ?

Next



# CPA COST COMPARISON

## Cost Impacts of Lean, Clean, & 100% Green

- Individual customers will experience different impacts from a default change depending on their rate type and usage
- The average monthly bill numbers for domestic (CPA residential customers) are:
  - Lean Power: \$115.77
  - Clean Power: \$116.80
  - 100% Green Power: \$126.01



# BENEFITS OF 100% GREEN POWER

- Setting a default rate product of 100% Green Power is a time-efficient and cost-effective solution for achieving significant GHG reductions from the energy sector
- 100% renewable power from Clean Power Alliance is 100% certified, carbon-free energy, effectively zeroing out GHG emissions from this source at only a 7-9% cost premium
- A 100% Green default does not prevent individual customer choice. Customers can always change between Lean, Clean, or 100% Green



# CLEAN POWER ALLIANCE CONTACTS



*Locally powered energy innovation.*

888-585-3788

[customerservice@cleanpoweralliance.org](mailto:customerservice@cleanpoweralliance.org)

[www.cleanpoweralliance.org](http://www.cleanpoweralliance.org)



[facebook.com/cleanpoweralliance](https://facebook.com/cleanpoweralliance)



[@cleanpowerinfo](https://twitter.com/cleanpowerinfo)

