



CITY OF MANHATTAN BEACH CITY HALL

1400 Highland Avenue, Manhattan Beach, CA 90266

WEBSITE: www.citymb.info • **PHONE:** (310) 802-5000

TO: Honorable Mayor and Members of the City Council

FROM: Carrie Tai, Community Development Department

MEETING: City Council Regular Meeting, September 9, 2021

SUBJECT: Agenda Item No.12 – Update on Upcoming Clean Power Alliance (CPA) Default Rate Change to 100% Green Power and Associated Outreach Schedule.

DATE: September 8, 2021

SUPPLEMENTAL ATTACHMENT

- PowerPoint Presentation

CLEAN POWER ALLIANCE UPDATE: 100% GREEN POWER OUTREACH

SEPTEMBER 9, 2021



HISTORY

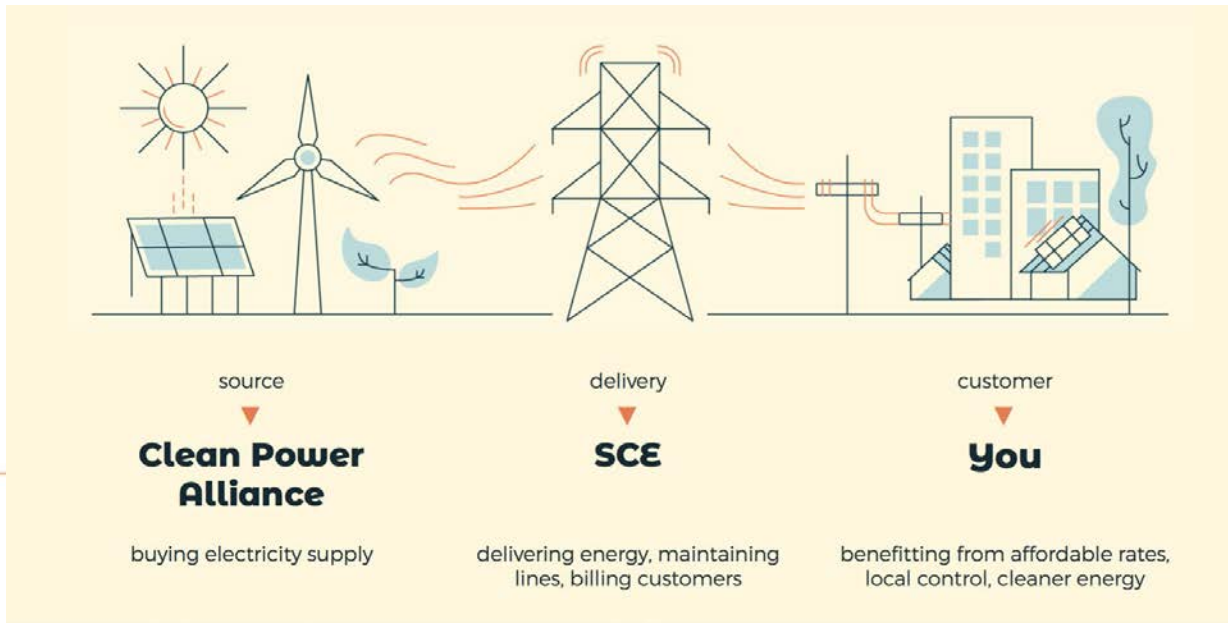
- 2017: City joins Clean Power Alliance (CPA)
- 2018: City & Community 50% Clean Power
- 2019: Municipal to 100% Green Power
- 2020: Council commits to 100% Green Power
- 2021: City & Community to 100% Green Power (October)

August 24, 2021 meeting, City Council requested background and update on outreach efforts leading up to the switch to 100% Green Power.



ABOUT CLEAN POWER ALLIANCE

- Clean Power Alliance is an electricity supply provider, offering clean, renewable energy at competitive rates to our community.
- Clean Power Alliance purchases clean power and Southern California Edison (SCE) delivers it.



ABOUT CLEAN POWER ALLIANCE



- Clean Power Alliance is a public entity formed through a Joint Powers Authority (JPA) made up of 32 public agencies across Southern California.
- Clean Power Alliance serves approximately 1 million customer accounts representing 3 million residents and businesses.



ABOUT CLEAN POWER ALLIANCE

Jurisdiction Default Choices



Lean Power

40% clean power

Arcadia
Hawthorne
Paramount
Simi Valley
Temple City
Westlake Village



Clean Power

50% clean power

Alhambra
Beverly Hills
Camarillo (effective October 1, 2021)
Carson
Claremont
Downey
Hawaiian Gardens
Unincorporated Los Angeles County
Moorpark
Redondo Beach
Whittier



100% Green Power

100% renewable energy

Agoura Hills (effective October 1, 2021)
Calabasas (effective October 1, 2021)
Culver City
Malibu
Manhattan Beach (effective October 1, 2021)
Ojai
Oxnard
Rolling Hills Estates
Santa Monica
Sierra Madre
South Pasadena
Thousand Oaks
Unincorporated Ventura County
Ventura
West Hollywood



100% GREEN POWER



Transition from
50% Clean to
**100% Green
Power**

CPA CLEAN
POWER
ALLIANCE



CITY OF
MANHATTAN BEACH

CLEAN POWER ALLIANCE

SEPTEMBER 9, 2021

100% GREEN POWER

Manhattan Beach is Going 100% Green!

- October 9, MB transitioning from 50% Clean to 100% Green Power.
- Renewable energy sources, like the sun and wind, will be used to produce the electricity that powers homes and businesses in Manhattan Beach.
- This move will reduce greenhouse gas emissions by 36,603 metric tons each year! Equivalent of:
 - Planting 603,947 trees
 - Taking 7,942 cars off the roads



100% GREEN POWER

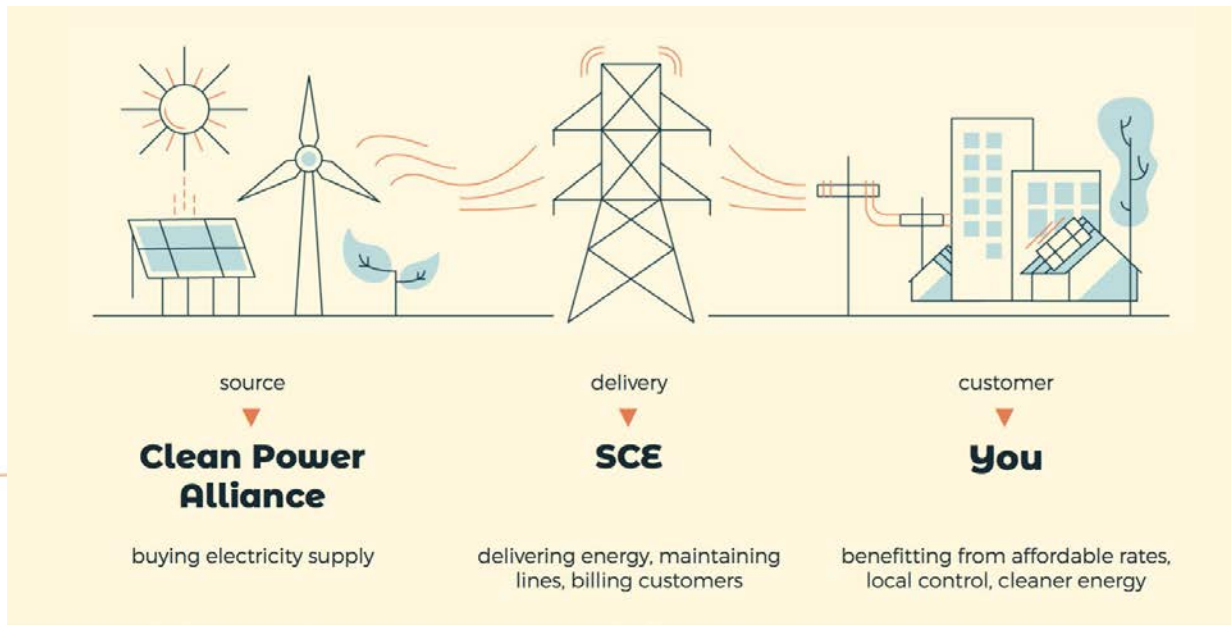
Manhattan Beach is Going 100% Green!

- Clean Power Alliance and the City will clearly communicate these changes to customers, with the financial impacts as well as the benefit to the environment.
- Typical bill will increase by 2.5-3% or about \$5.00 a month for residents and small businesses.
- The default change will take place on each customers' meter read date in October.



BILLING

- SCE sends your monthly bill, which includes SCE charges for electricity delivery followed by your Clean Power Alliance charges for electricity supply/generation.
- Note that Clean Power Alliance is NOT an added fee; it simply replaces the SCE supply/generation charges on your bill.



POWER OF CHOICE

cleanpoweralliance.org/compare

Customers will have access to same tools and ability to change rates, stay on their current rate, or opt out of CPA

Calculate & Compare

See what your bill could look like with different Clean Power Alliance and Southern California Edison (SCE) service offerings using the calculator tool below. Click the orange question icons for guidance on where to find each input on your bill.

Rate ?

Service Location ?

Bill Ending Month ?

Winter - Baseline Usage (kWh) ?

[Click Here to Compare Your Bill](#)

Enter Account Information

SCE Customer Account Number (Required) ?

[View Sample SCE Bill Information](#)

Your Last Name or Business Name (Required) ?

Service Location ZIP Code (Required) ?



CPA BILL ASSISTANCE PROGRAMS

1/3 of CPA customers receive bill assistance. Learn more at cleanpoweralliance.org/CPAbillhelp

AMP (Arrearage Management Plan)

- Debt-forgiveness program for customers with at least \$500 in past due electricity bills with some portion of the debt at least 90 days past due.

CARE (California Alternate Rates for energy)

- Reduces energy bills for eligible customers by about 30%. You can qualify for CARE based on participation in public assistance programs, or on household income.

FERA (Family Electric Rate Assistance)

- Reduces electric bills for qualified households by 18%. You can qualify for FERA based on participation in public assistance programs, or on household income.

Medical Baseline

- Helps offset the cost to operate medical equipment. This program provides an additional 16.5 kilowatt-hours (kWh) of electricity per day at the lowest rate.

CA COVID-19 Rent Relief

- CA COVID-19 Rent Relief will help income-eligible households pay rent and utilities, both for past due and future payments.

CPA Power Response Incentives

- Power Response program allows you to save up to \$200 a year by reducing your energy usage during times of heavy usage.

SCE's Summer Discount Program

- Save up to \$230 a year by allowing SCE to shut down your air conditioning during emergencies or periods of high electricity demand.



CUSTOMER SUPPORT

Ways to Connect with CPA

Online: cleanpoweralliance.org



Email: customerservice@cleanpoweralliance.org



Customer Support: 888-585-3788



CPA



OUTREACH TIMELINE

Social Media
Webpages
eNewsletters
Presentations



August

Mailed postcard
Newspaper Ads
Farmer's Market Booth
OAP Tech Classes
Chamber of Commerce
Social Media
Webpages
eNewsletters
Water Bill Insert
Presentations



September

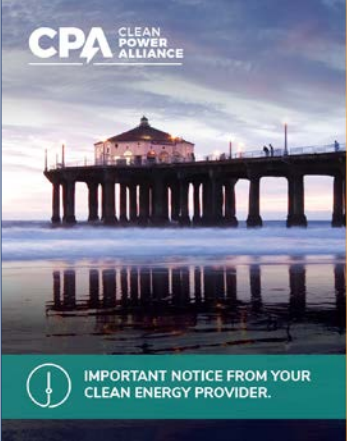
Press Release
Hometown Fair Booth
2nd mailed postcard
Newspaper Ad
Social Media
Webpages
eNewsletters
Water Bill Insert



October



MAILED NOTICES



CPA CLEAN POWER ALLIANCE

Manhattan Beach is going to 100% Green Power!

In October, clean energy produced by sources like the sun and wind will be used to power homes and businesses in Manhattan Beach.

This will reduce **36,603** metric tons of greenhouse gas emissions, annually, which is like planting **603,947** trees or taking **7,942** cars off the road.

IMPORTANT NOTICE FROM YOUR CLEAN ENERGY PROVIDER.


To offset this cost, you could simply turn your thermostat up during the summer by 2 degrees! Follow Clean Power Alliance to learn more energy saving tips.

What are my other choices?

If you want to keep your bill what it is currently or learn more about other rate options, visit cleanpoweralliance.org/compare or you can call us at **888-585-3788** or email us at customerservice@cleanpoweralliance.org.

And because Clean Power Alliance cares about our communities, we offer many customer assistance programs. Visit cleanpoweralliance.org/CPAbillhelp to learn more and see if you qualify.

[@CleanPowerAlliance](#) [@CleanPowerInfo](#)



CPA CLEAN POWER ALLIANCE

FD-350 (Rev. 10-2013) Los Angeles, CA 90013

Postnet Standard Mail Postage PAID 146 Los Angeles, CA Permit No. 2312

MANHATTAN BEACH IS GOING TO 100% GREEN POWER!



In October, 100% clean energy produced by sources like the sun and wind will be used to power homes and businesses in Manhattan Beach.

This will reduce **36,603** metric tons of greenhouse gas emissions, annually, which is like planting **603,947** trees or taking **7,942** cars off the road.

THANK YOU, MANHATTAN BEACH!

CPA CLEAN POWER ALLIANCE



WHAT DOES THIS MEAN FOR YOU?

- Because it costs a bit more for clean energy, a typical bill for residents and small businesses will go up by approximately 2.5%-3%, or about \$4-\$5 a month on the average bill.
- Follow Clean Power Alliance to learn about energy saving tips to reduce your bill.
- Clean Power Alliance cares about our communities, and offers many customer assistance programs. To learn more and see if you qualify, visit cleanpoweralliance.org/CPAbillhelp

WHAT ARE MY OTHER CHOICES?

If you want to keep your bill at its current level or learn more about other rate options, visit cleanpoweralliance.org/compare or you can call us at **888-585-3788** or email us at customerservice@cleanpoweralliance.org

CPA CLEAN POWER ALLIANCE

[@CleanPowerAlliance](#)
[@CleanPowerInfo](#)



PUBLICATIONS

MANHATTAN BEACH IS GOING TO 100% GREEN POWER!

In October, 100% clean energy produced by sources like the sun and wind will be used to power homes and businesses in Manhattan Beach. This will reduce 36,603 metric tons of greenhouse gas emissions, annually, which is like planting 603,947 trees or taking 7,942 cars off the road.

THANK YOU, MANHATTAN BEACH!

KNOW YOUR CHOICES AND LEARN MORE

Learn more about other rate options, visit cleanpoweralliance.org/compare or you can call us at 888-585-3788 or email us at customerservice@cleanpoweralliance.org.



And because Clean Power Alliance cares about our communities, we offer many customer assistance programs. Visit cleanpoweralliance.org/CPAbillhelp to learn more and see if you qualify.

MANHATTAN BEACH IS GOING TO 100% GREEN POWER!

DID YOU KNOW?

You can change your clean power tier at any time AND Clean Power Alliance has assistance programs to help pay your electricity bills!
cleanpoweralliance.org/CPAbillinghelp



[@CleanPowerAlliance](https://www.facebook.com/CleanPowerAlliance)
[@CleanPowerInfo](https://www.instagram.com/CleanPowerInfo)
 888-585-3788
customerservice@cleanpoweralliance.org

MANHATTAN BEACH IS GOING TO 100% GREEN POWER!

KNOW YOUR CHOICES & LEARN MORE

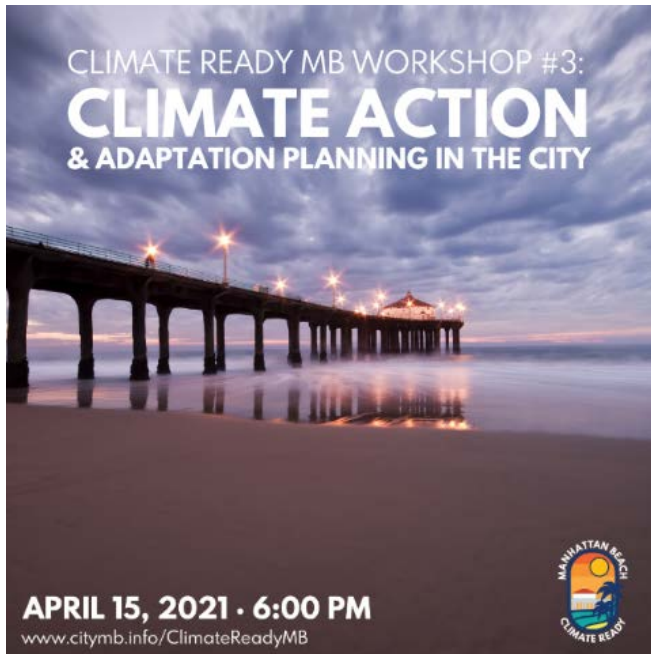
Learn more about other rate options, visit cleanpoweralliance.org/compare or you can call us at 888-585-3788 or email us at customerservice@cleanpoweralliance.org.



[@CleanPowerAlliance](https://www.facebook.com/CleanPowerAlliance)
[@CleanPowerInfo](https://www.instagram.com/CleanPowerInfo)
 888-585-3788
customerservice@cleanpoweralliance.org



PRESENTATIONS & EVENTS



CLEAN POWER ALLIANCE

SENIOR ADVISORY COMMITTEE JUNE 8, 2021



AGENDA

SENIOR ADVISORY COMMITTEE MEETING
Tuesday, June 8, 2021 at 1 PM
ZOOM

1. Welcome- Chair
2. Flag Salute
3. Roll Call
4. Introduction of Members and Visitors
5. Approval of Minutes
6. Priority Action Items
 - o Approval of Agenda-All
 - o Clean Power Alliance – Dana Murray, Environmental Sustainability Manager
 - o City Council Report – Councilperson Franklin

CLEAN POWER ALLIANCE

DINE 'N DISCOVER AUGUST 18, 2021



E-NEWSLETTERS

Beginning October 2021, the City's electricity will be 100% Green Energy.



HOUSING ELEMENT UPDATE

The City is updating the General Plan Housing Element's policies, strategies and actions to enable new housing and preserve existing housing to meet community needs. Want to get involved? Email: HEupdate2021@citymb.info

www.citymb.info/CommDev



Metlox has two new bike racks, with more to come throughout downtown!



There is a new crosswalk and signal at Veteran's Parkway Walkway and 15th Street.

(310) 802-5500 • cdadmin@citymb.info



SOCIAL MEDIA



 cityofmb • Following
Manhattan Beach, California

 cityofmb Manhattan Beach is going Green – with 100% clean renewable energy starting October 9! 🌱 Residents are leading the way as one of 15 Southern California communities that have made the switch to zero-emissions sources like sun and wind! ⚡🔊

• Starting in October, for about \$4.50* more a month in electricity charges, residents of MB will fight climate change every time they flip the light switch! 💡 Thank you, Manhattan Beach, for leading the way to a clean energy future! 🍌

• *CPA customers may learn more about their options or choose to stay at their current rates by contacting 888-585-

❤️ 💬 🗹 🏷️

 Liked by ecoinflow and 428 others

AUGUST 10

 Add a comment... [Post](#)



CUSTOMER SUPPORT

Ways to Connect with CPA

Online: cleanpoweralliance.org



Email: customerservice@cleanpoweralliance.org



Customer Support: 888-585-3788



CPA





Questions

