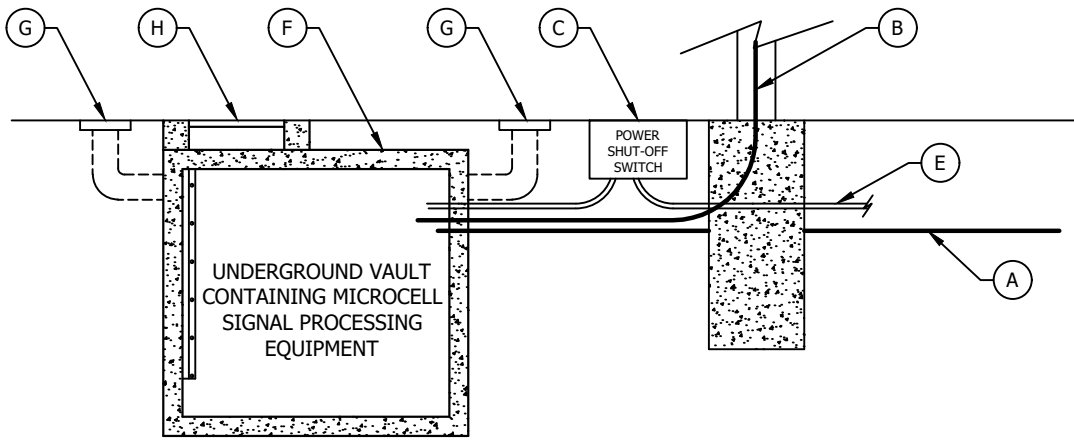


**PLAN VIEW**

**SECTION VIEW**



**CONSTRUCTION NOTES:**

- (A) INSTALL COMMUNICATIONS CONDUIT AS REQUIRED BY 3RD PARTY (24" MIN.). SEPARATE RIGHT OF WAY PERMIT REQUIRED.
- (B) INSTALL CONDUIT PER UTILITY COMPANY STANDARDS.
- (C) INSTALL PULL-BOX WITH SWITCH AND BREAKER LOCATED NO MORE THAN 20-FT FROM BASE OF UTILITY POLE. BOX LID SHALL BE MARKED "CELL SITE POWER SHUT-OFF SWITCH" OR OTHER APPROVED INDUSTRY WORDING. BOX SIZE DETERMINED BY EQUIPMENT REQUIREMENTS.
- (D) INSTALL PULL-BOX PER MBSI-190A AND MBSI-112A (ST-2).
- (E) SCE POWER CONDUIT IF POWER SOURCE IS SUPPLIED FROM ADJACENT POLE OR OTHER CIRCUIT.
- (F) INSTALL OLDCASTLE PRECAST VAULT - MODEL MC510 OR APPROVED EQUAL.
- (G) INSTALL FLUSH VENT - ALHAMBRA FOUNDRY MODEL A-2121 OR APPROVED EQUAL.
- (H) INSTALL ACCESS HATCH PER VAULT MANUFACTURER.

**GENERAL NOTES:**

1. SEE STANDARD PLAN MBTU-800A FOR GENERAL NOTES ON SMALL CELL INSTALLATION.

NOT TO SCALE



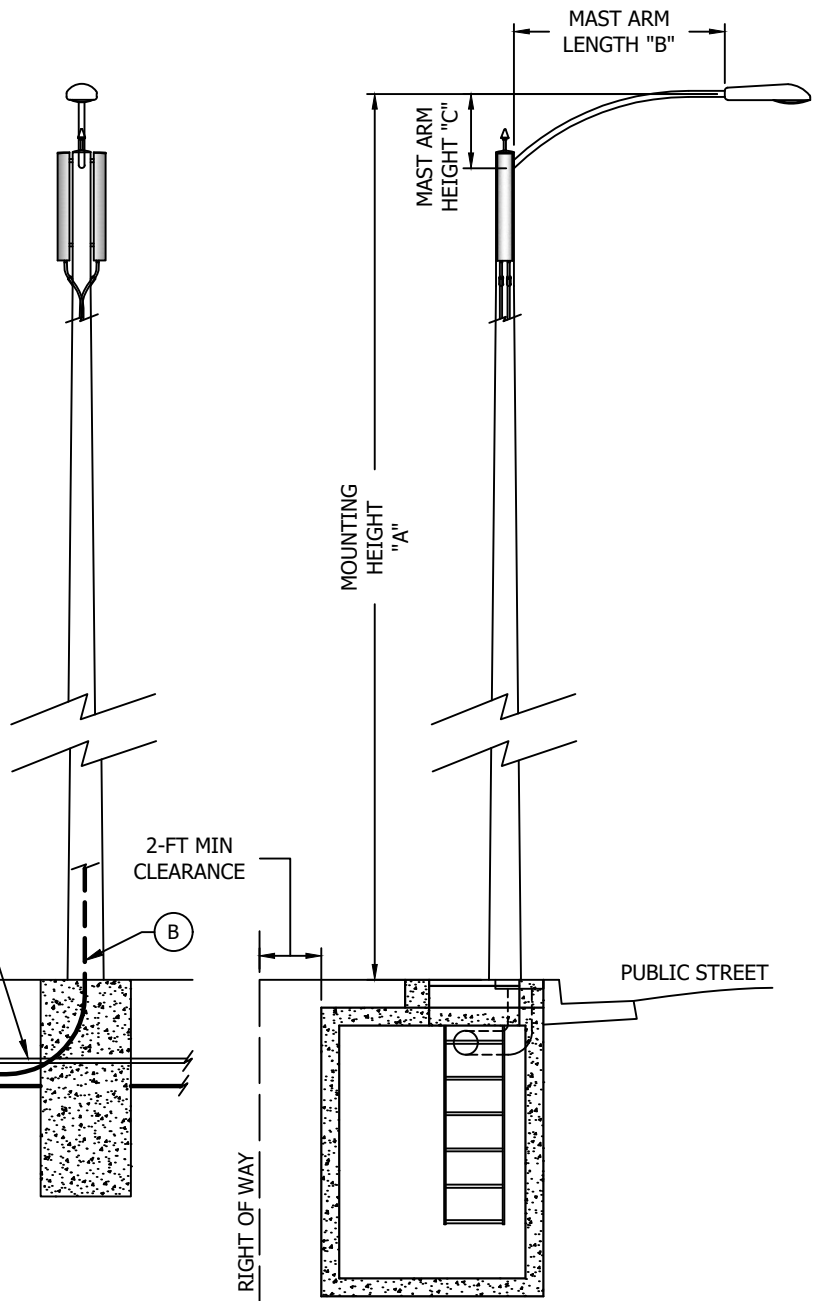
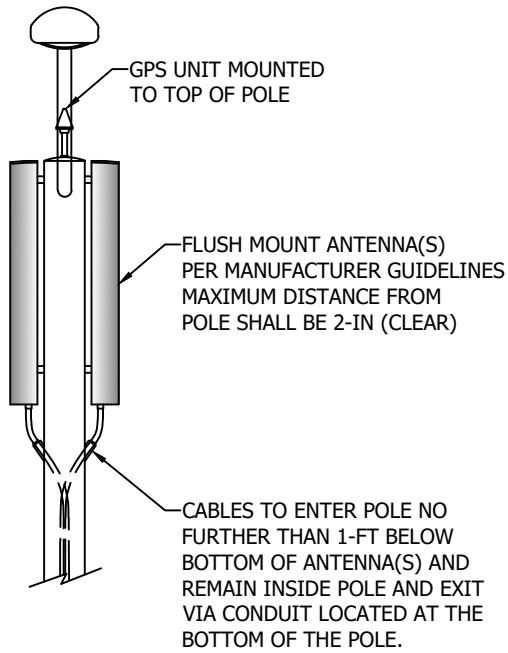
DATE REVISED  
08/24/2021

**CITY OF MANHATTAN BEACH  
DEPARTMENT OF PUBLIC WORKS**

**SMALL CELL INSTALLATION CASE 1: EQUIPMENT UNDERGROUND**

APPROVED BY  11/02/2021  
PREM KUMAR, P.E., CITY ENGINEER DATE

STANDARD PLAN NUMBER  
**MBTU-801A-0**  
SHEET 1 OF 2



**STREET-SIDE VIEW**

**SECTION VIEW**

TYPICAL STREETLIGHT DIMENSIONS (NOMINAL)			
STREET TYPE	MOUNTING HEIGHT "A"	MAST ARM LENGTH "B"	MAST ARM HEIGHT "C"
RESIDENTIAL / COLLECTOR	25'-0"	4'-0"	2'-0"
ARTERIAL	30'-8"	6'-0"	2'-8"

**GENERAL NOTES:**

1. SEE SHEET 1 FOR CONSTRUCTION NOTES.
2. SEE STANDARD PLAN MBTU-800A FOR GENERAL NOTES ON SMALL CELL INSTALLATION.

NOT TO SCALE



DATE REVISED  
08/24/2021

**CITY OF MANHATTAN BEACH  
DEPARTMENT OF PUBLIC WORKS**

**SMALL CELL INSTALLATION CASE 1: EQUIPMENT UNDERGROUND**

APPROVED BY  
*[Signature]*  
PREM KUMAR, P.E., CITY ENGINEER

11/02/2021  
DATE

STANDARD PLAN NUMBER  
**MBTU-801A-0**  
SHEET 2 OF 2