

PLAN VIEW

*NOTE: FOR CLARITY, STREET LIGHT LUMINAIRE AND MAST ARM NOT SHOWN.

CONSTRUCTION NOTES:

- (A) INSTALL COMMUNICATIONS CONDUIT AS REQUIRED BY 3RD PARTY (24" MIN.). SEPARATE RIGHT OF WAY PERMIT REQUIRED.
- (B) INSTALL COMMUNICATIONS PULL-BOX SIZED PER UTILITY COMPANY STANDARDS.
- (C) INSTALL CONDUIT PER UTILITY COMPANY STANDARDS.
- (D) INSTALL PULL-BOX WITH SWITCH AND BREAKER LOCATED NO MORE THAN 20-FT FROM BASE OF UTILITY POLE. BOX LID SHALL BE MARKED "CELL SITE POWER SHUT-OFF SWITCH" OR OTHER APPROVED INDUSTRY WORDING. BOX SIZE DETERMINED BY EQUIPMENT REQUIREMENTS.
- (E) INSTALL PULL-BOX PER MBSI-190A AND MBSI-112A (ST-2).
- (F) SCE POWER CONDUIT IF POWER SOURCE IS SUPPLIED FROM ADJACENT POLE OR OTHER CIRCUIT.

GENERAL NOTES:

1. SEE STANDARD PLAN MBTU-800A FOR GENERAL NOTES ON SMALL CELL INSTALLATIONS.

NOT TO SCALE



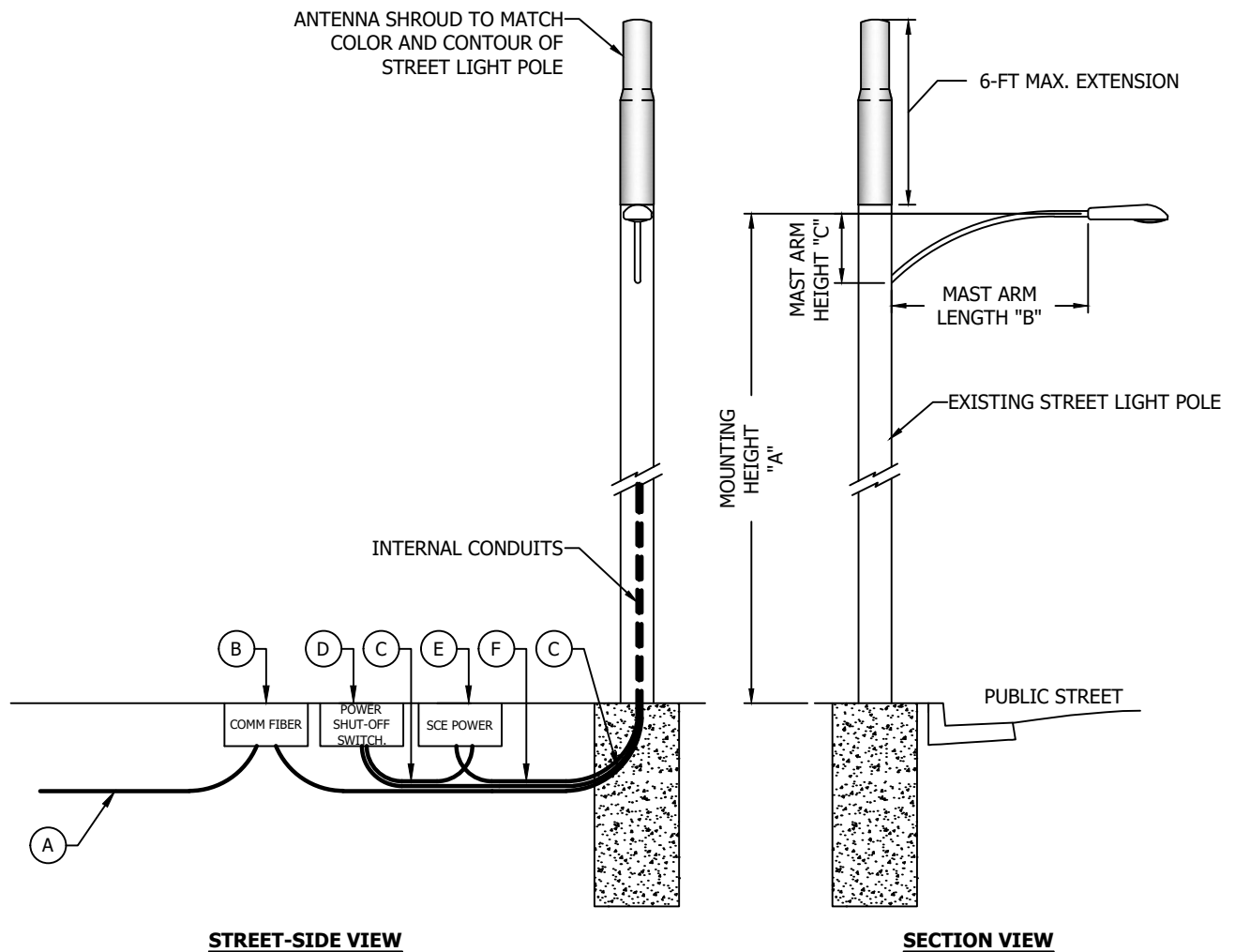
DATE REVISED
08/24/2021

**CITY OF MANHATTAN BEACH
DEPARTMENT OF PUBLIC WORKS**

SMALL CELL INSTALLATION CASE 2: "STEALTH" POLE

APPROVED BY  11/02/2021
PREM KUMAR, P.E., CITY ENGINEER DATE

STANDARD PLAN NUMBER
MBTU-801B-0
SHEET 1 OF 2



TYPICAL STREETLIGHT DIMENSIONS (NOMINAL)			
STREET TYPE	MOUNTING HEIGHT "A"	MAST ARM LENGTH "B"	MAST ARM HEIGHT "C"
RESIDENTIAL / COLLECTOR	25'-0"	4'-0"	2'-0"
ARTERIAL	30'-8"	6'-0"	2'-8"

GENERAL NOTES:

1. SEE SHEET 1 FOR CONSTRUCTION NOTES.
2. SEE STANDARD PLAN MBTU-800A FOR GENERAL NOTES ON SMALL CELL INSTALLATIONS.

NOT TO SCALE



DATE REVISED	08/24/2021

**CITY OF MANHATTAN BEACH
DEPARTMENT OF PUBLIC WORKS**

SMALL CELL INSTALLATION CASE 2: "STEALTH" POLE

APPROVED BY	STANDARD PLAN NUMBER
 PREM KUMAR, P.E., CITY ENGINEER	MBTU-801B-0
DATE	SHEET 2 OF 2
11/02/2021	