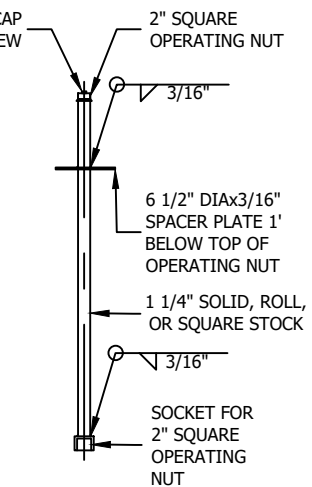
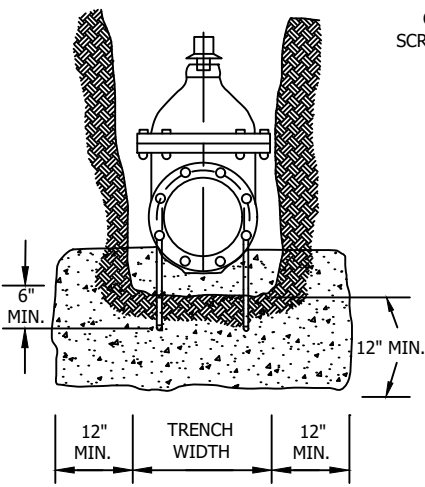


- NOTES**
1. VALVE ANCHOR REQUIRED ON ALL VALVES OVER 6" AND ALL VALVES AT DEAD ENDS.
  2. ANCHOR STRAPS SHALL BE EMBEDDED DIRECTLY INTO THE CONCRETE THRUST BLOCK.
  3. CONCRETE THRUST BLOCKS SHALL CONFORM TO STATE STANDARD 90-1.01, 470 LBS/CY CEMENTITIOUS MATERIAL (5-SACK) AND BE POURED AGAINST UNDISTURBED NATIVE SOIL.
  4. ALL WORK SHALL BE PERFORMED IN ACCORDANCE WITH THE STANDARD SPECIFICATIONS FOR PUBLIC WORKS CONSTRUCTION (THE GREEN BOOK) MOST RECENT EDITION, AND ALL SUPPLEMENTS THERETO OR AS MODIFIED BY THE ENGINEER.
  5. 10" VALVE WELL RISER AND CAP SHALL BE USED FOR ALL GATE VALVES.
  6. REFER TO MBWS-702B FOR CUT IN VALVES USING SLEEVE.
  7. PORTLAND CEMENT CONCRETE SHALL BE PCC, 450-C-2000 AND SHALL BE POURED AGAINST UNDISTURBED SOIL.
  8. WRAP EXTERIOR OF VALVE, PIPE, ACTUATOR AND REBAR WITH 8 MIL POLYETHYLENE SHEETING AND TAPE. CONCRETE SHALL BE KEPT CLEAR OF THE BELL AREA OF VALVES AND FITTINGS.
  9. ANCHOR STRAPS SHALL BE NO.4 STEEL REINFORCING BARS. COAT EXPOSED BARS WITH 20 MILS TNEMEC SERIES 46-465 H.B. TNEMECOL OR APPROVED EQUAL.
  10. NO VALVE SHALL BE LOCATED WITHIN A GUTTER OR OTHER CONCRETE DRAINAGE DEVICE, ALLEY GUTTERS, DRIVEWAY AND ALLEY APPROACHES OR SIDEWALKS UNLESS OTHERWISE SPECIFIED BY THE CITY ENGINEER.



ITEM	MATERIAL
1	MUELLER OR APPROVED EQUAL, DUCTILE IRON RESILIENT WEDGE GATE OR BUTTERFLY MJ x MJ OR FLANGE x MJ AS CALLED FOR. (BUTTERFLY VALVE: CONNECTION TO MAINLINE ABOVE 12". GATE VALVE: CONNECTIONS TO 12" AND UNDER.)
2	NEW WATER MAIN, SEE NOTE 6
3	ANCHOR STRAPS
4	CONCRETE THRUST BLOCK PER MBWS-704A
5	VALVE RISER PER MBWS-710A
6	VALVE AND CAP PER MBWS-710A
7	MECHANICAL JOINT RESTRAINER GLAND (MEGALUGS)

**VALVE STEM NOTES**

PROVIDE VALVE STEM EXTENSION WHEN DEPTH TO OPERATING NUT EXCEEDS 72". FABRICATE EXTENSION TO FIELD MEASUREMENT, PROVIDE ADDITIONAL SPACER PLATE WHEN DISTANCE TO BOTTOM SOCKET EXCEEDS 5'.

NO VALVE STEM EXTENSION SHALL BE LESS THAN 2' IN LENGTH. THE VALVE STEM EXTENSION SHALL BE OF SOLID DESIGN. PINNED COUPLERS ARE UNACCEPTABLE. THE 2" SQUARE OPERATING NUT SHALL BE AT LEAST 24" BELOW FINISHED GRADE.

NOT TO SCALE



DATE REVISED  
11-24-2021

**CITY OF MANHATTAN BEACH  
DEPARTMENT OF PUBLIC WORKS**

**NEW GATE AND BUTTERFLY VALVE INSTALLATION**

APPROVED BY  
*[Signature]*  
PREM KUMAR, CITY ENGINEER

STANDARD PLAN NUMBER  
**MBWS-708A-0 (ST-28)**  
SHEET 1 OF 1

12/02/2021  
DATE