



CITY OF MANHATTAN BEACH

1400 Highland Avenue Manhattan Beach, CA 90266
www.manhattanbeach.gov • (310) 802-5000

STAFF REPORT

Agenda Date: 7/5/2022

TO:

Honorable Mayor and Members of the City Council

THROUGH:

Bruce Moe, City Manager

FROM:

Alexandria Latragna, Policy and Management Analyst

SUBJECT:

Consideration of Presenting to the Voters Two Ballot Measures Concerning Commercial Cannabis:

- a) Maintaining the Existing Prohibition of Commercial Cannabis Activity; and
- b) Establishing Local Regulation and Taxation of Commercial Cannabis Activity (City Manager Moe).

(Estimated Time: 1 Hr.)

ADOPT RESOLUTION NOS. 22-0098 AND 22-0099

RECOMMENDATION:

Staff recommends that the City Council:

- (1) Adopt Resolution No. 22-0098 submitting to the voters at the November 8, 2022, election a measure prohibiting the sale of commercial cannabis in Manhattan Beach;
- (2) Select the number of permissible retail stores: (a) one; (b) two; or (c) up to two; and
- (3) Adopt Resolution No. 22-0099 submitting to the voters at the November 8, 2022, election a measure regulating and taxing the sale of commercial cannabis in Manhattan Beach.

Please note that each resolution includes: standard provisions required by the County to call the election; the ballot question; and the respective draft measure attached as an exhibit. Further note that the measure attached as an exhibit to Resolution No. 22-0099 includes: the buffers suggested by staff; and a limitation of potential uses to the General Commercial (CG) and the Commercial North End (CNE) zones (with the net result being there would be only three potential areas where cannabis retail stores could be located: (1) on Sepulveda Boulevard near 27th and 30th Streets, (2) two sites on Sepulveda Boulevard near 8th street; and (3) a small area in the

North End).

FISCAL IMPLICATIONS:

If Council opts to proceed with the two measures, according to Los Angeles County’s Election Estimating Calculator on their website, the approximate costs of adding two additional ballot measures to the November 8, 2022, ballot is \$38,281.26. Anticipated annual tax revenue for each retail store is estimated to be between \$240,000 and \$400,000. There may be additional tax revenue depending on whether other cannabis uses are subsequently allowed.

BACKGROUND:

All cannabis dispensaries (retailers) and commercial cannabis activities are currently illegal in Manhattan Beach pursuant to Ordinance Nos. 17-0024 and 17-0025.

On October 13, 2021, the Cannabis Industry filed a “Notice of Intent to Circulate Initiative Petition for the Manhattan Beach Cannabis Regulation and Public Safety Measure” (Cannabis Industry Measure). If adopted, the Cannabis Industry Measure would, among other things:

1. Repeal the City’s existing prohibition of all commercial cannabis activity;
2. Require the City to issue permits to three cannabis retailers at locations located (i) in certain commercial districts, subject to exceptions, (ii) more than 1,000 feet from identified schools and youth centers, and (iii) more than 850 feet from identified day care centers (See attached map that indicates the areas where retailers could locate if the voters pass the Cannabis Industry Measure);
3. Direct the City Manager to adopt an application process that contains rules for submission, intake, and approval; and
4. Establish a point system for evaluating and ranking applicants.

The Cannabis Industry Measure does not impose a City tax on cannabis businesses.

As required by state law, the City Council has previously placed the Cannabis Industry Measure on the General Municipal Election ballot to be held on Tuesday, November 8, 2022. In addition, the City Council directed the City Attorney to draft two additional counter-measures:

1. A measure banning cannabis sales reaffirming the ordinances previously adopted by the City Council prohibiting commercial cannabis activity in the City (Measure Prohibiting Commercial Cannabis).
2. A measure establishing taxes and regulations for commercial cannabis in the City (Measure Regulating and Taxing Cannabis).

DISCUSSION:

Measure Prohibiting Commercial Cannabis

The Measure Prohibiting Commercial Cannabis is attached to Resolution No. 22-0098. If it is

approved by the voters and receives the highest number of votes among the three cannabis measures presented to the Manhattan Beach voters, it will maintain the City's current ban on commercial cannabis activity and re-adopt all of the other terms and provisions of Ordinance Nos. 17-0024 and 17-0025. Another vote of the electors would be required to modify the ban.

Measure Regulating and Taxing Cannabis

On June 21, 2022, the Council provided further direction on Measure Regulating and Taxing Cannabis and requested further research on issues such as the number of retail stores that could be allowed and buffer zones. Accordingly, staff drafted Resolution No. 22-0099 and the Measure Regulating and Taxing Cannabis. If it is approved by the voters and receives the highest number of votes among the three cannabis measures presented to the Manhattan Beach voters, it will prevail.

Both measures contain the ballot question as well as other requirements of the County.

The Measure Regulating and Taxing Cannabis includes the following features:

1. Number of Retail Stores

As drafted, the Measure limits the number of retail stores to one. The City Council indicated that they would like to limit the number of commercial cannabis retail locations to one if possible. The "industry standard" was initially one retail store per 10,000 residents, but, according to a well-regarded consultant, the standard is now one retail store per 18,000 residents. The Medicinal and Adult-Use Cannabis Regulation and Safety Act adopted in California allows cities to prohibit cannabis stores altogether. Accordingly, if the City can totally prohibit them (as it currently does) the City can safely limit the number permitted to one store. In sum, the City Council can direct that the Measure Regulating and Taxing Cannabis limit locations to (a) one, (b) two or, (c) delegate to the Council the discretion to permit up to two. By contrast, if the Cannabis Industry Measure is adopted by the voters, it requires the City to approve three retail stores. Moreover, if the voters adopt the Measure Prohibiting Commercial Cannabis Activity, no retail stores will be permitted, except if the voters adopt a subsequent ballot measure at a future election.

2. Location

The Cannabis Industry Measure, as noted above, allows cannabis retailers to locate (i) in certain commercial districts, subject to exceptions, (ii) more than 1,000 feet from identified schools and youth centers, and (iii) more than 850 feet from identified day care centers. State law prohibits a licensed cannabis retailer to be located within a 600-foot radius of a school, day care center, or youth center.

The Measure Regulating and Taxing Cannabis would, if adopted by the voters, permit cannabis retailers to operate on property that is located in certain commercial districts CG and the CNE; more than 1,000 feet from libraries, schools, youth centers, parks (except for Veterans Parkway), and religious institutions; more than 850 feet from day care centers; and more than 1,000 feet from any other cannabis retailer, should more than one retailer be permitted. The attached map shows the buffer areas where cannabis retailers cannot locate if the Measure Regulating and Taxing Cannabis passes.

Pursuant to Council direction, Staff explored a buffer zone of 1,500 feet: (1) from sensitive uses; and (2) from the beach. A 1,500 foot buffer would preclude any location in the City as illustrated in the map labeled “1,500 Foot Buffer,” thus being somewhat redundant of the other City Council-initiated Measure Prohibiting Commercial Cannabis. Likewise, placing a buffer zone from the Strand would prohibit any location in the Downtown area and the North End. Accordingly, staff proposes limiting cannabis retailers to locate only in the CG and the CNE, instead of creating a 1,500 foot buffer from the Strand. This proposal would prohibit stores in the downtown area, but would allow a store in a very limited area of the North End. A map labeled “Staff’s Suggested Buffer Map” that demonstrates the very limited areas of the City where the store(s) can be located under staff’s recommendation is attached, which includes the additional 1,000 foot buffers from religious institutions and parks, with the exception of Veterans Parkway.

3. Types of products

The City Council expressed concerns about the sale of any products or the advertisement of products that are likely to attract or appeal to children. Foods and beverages can be infused with the chemical compound delta-9-tetrahydrocannabinol (THC), the main psychoactive component responsible for the plant’s intoxicating effects. This includes products such as brownies and cookies, candies such as gummies and lollipops, and beverages. According to the Substance Abuse and Mental Health Services Administration (SAMHSA), edible cannabis products are especially attractive to youth, as their packaging often look very similar to that of non-cannabis products (for example, beverages, candies, cookies, sodas, and teas). Additionally, cannabis products with added synthetic flavors and odors (such as fruit and candy) may be particularly attractive to youth, and the THC concentration can vary across products and batches of a single product. Additionally, there are specific health risks associated with highly concentrated cannabis use among adolescents.

One strategy identified by the SAMHSA in the publication, “Preventing Marijuana Use Among Youth,” to reduce the appeal of cannabis among children is requiring plain product packaging. For example, children are drawn to food packaging that includes color, novel shapes, products that smell sweet, fruity, or like candy, and cartoons or promotional characters. Requiring plain, tamper-resistant, child-resistant, opaque, and resealable packaging for cannabis products can reduce brand awareness and identification and product appeal to children.

Most significantly, the state of California has adopted stringent regulations incorporating these measures to reduce or eliminate appeal to children. In addition, staff has drafted the Measure Regulating and Taxing Cannabis to include a delegation to the City Manager to impose additional limitations on such sales and adopt supplemental regulations as part of the application process.

4. Delivery and Types of commercial cannabis businesses

- a) The City Council indicated that they would like to prohibit deliveries from any commercial cannabis retailer within the City, including delivery-only locations within the City’s boundaries. As drafted, this Measure prohibits deliveries from any location in the City.
- b) As drafted, the Measure Regulating and Taxing Cannabis would also prohibit commercial cannabis manufacturing, cultivation, and lab testing. Note that state law preempts the City from prohibiting the cultivation of cannabis for personal use (up to six plants). Accordingly, state law

is already restated in Ordinance Nos. 17-0024 and 17-0025, and neither Measure is inconsistent with state law on this subject.

5. Taxation

The Measure Regulating and Taxing Cannabis to be presented to the voters on the November 8, 2022, ballot would authorize the City Council to set a minimum tax of 15% of gross receipts on commercial cannabis and a maximum of 20%. Deliveries to locations within the City from commercial cannabis retailers located outside of the City would be taxable at this same rate. Those retailers located outside of the City, but delivering to locations within the City, would be required to track gross sales of such deliveries and pay an annual business license tax.

6. Application Process

The Measure Regulating and Taxing Cannabis allows the greatest flexibility for the City Manager to establish regulations for the issuance of permits to cannabis retailers to ensure the safety and compatibility to the surrounding neighborhoods. Through these regulations, the City can establish a fair and equitable application process and may require development agreements to specify conditions that must be met as a requirement to conduct commercial cannabis activity.

7. Repeal and Amendment

The Measure Regulating and Taxing Cannabis cannot be repealed without another election; certain regulations can be amended, but not the taxation range of 15% to 20% of gross receipts.

CONCLUSION:

Staff recommends that the City Council:

- (1) Adopt Resolution No. 22-0098 submitting to the voters at the November 8, 2022, election a measure prohibiting the sale of commercial cannabis in Manhattan Beach;
- (2) Select the number of permissible retail stores (a) one; (b) two; or (c) up to two;
- (3) Adopt Resolution No. 22-0099 submitting to the voters at the November 8, 2022, election a measure regulating and taxing the sale of commercial cannabis in Manhattan Beach.

PUBLIC OUTREACH:

After analysis, staff determined that public outreach was not required for this issue.

ENVIRONMENTAL REVIEW:

The attached measures address compliance with the California Environmental Quality Act, Public Resources Code Sections 231000 et seq. ("CEQA") and 14 Cal. Code Re. Sections 15000 et seq. ("CEQA Guidelines").

LEGAL REVIEW:

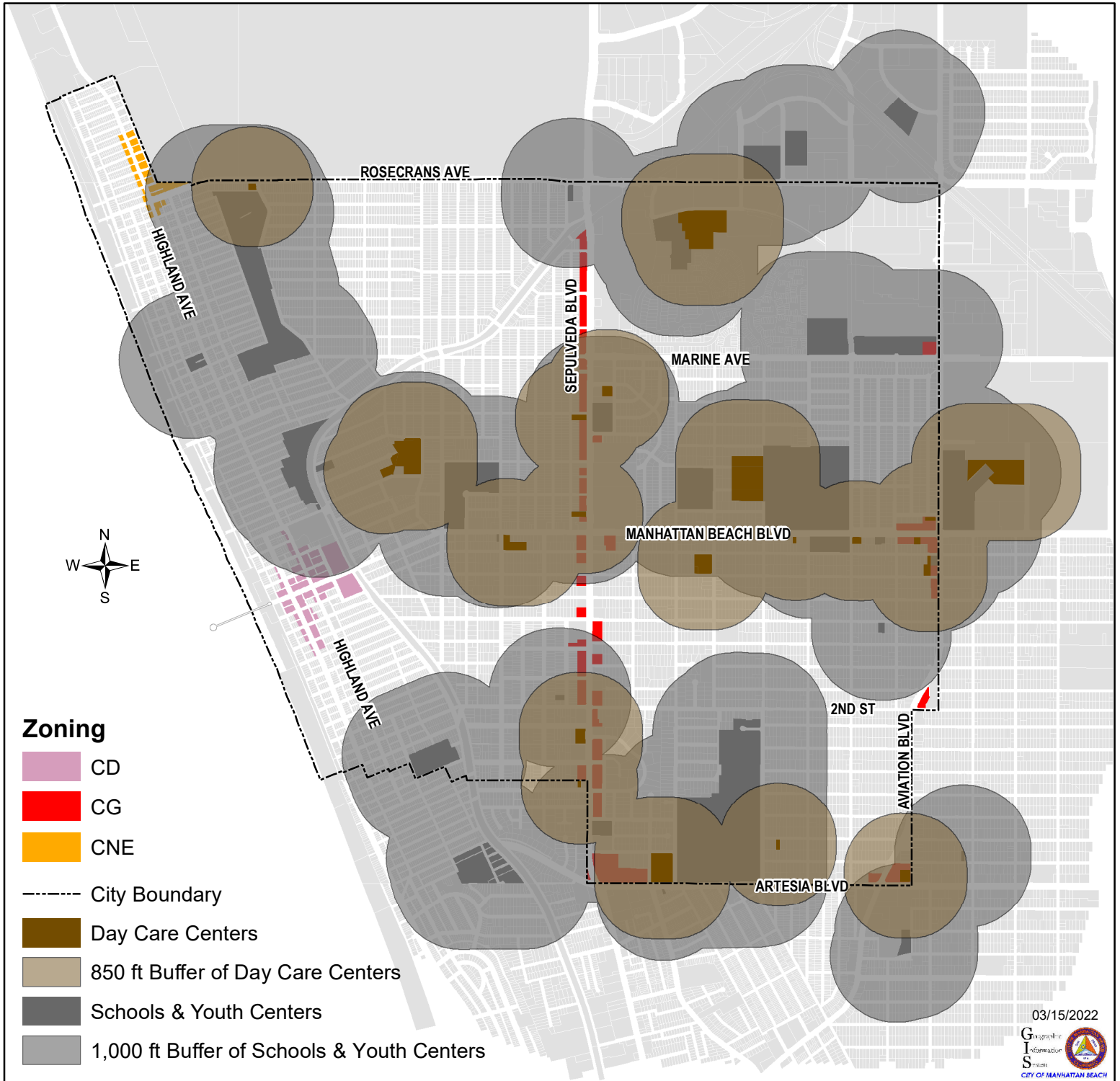
The City Attorney has reviewed this report and determined that no additional legal analysis is necessary.

ATTACHMENTS:

1. Cannabis Industry Map (Comparison Purposes Only)

2. Resolution No. 22-0098 (Document will be sent on a separate cover.)
3. Measure Banning the Sale of Cannabis
4. Resolution No. 22-0099 (Document will be sent on a separate cover.)
5. Measure Regulating and Taxing Cannabis
6. Staff's Suggested Buffer Map with 1,000 Foot Buffers
7. Map with 1,500 Foot Buffers (Comparison Purposes Only)

City of Manhattan Beach Cannabis Initiative Sensitive Use Buffer Areas



ORDINANCE NO. ____

AN ORDINANCE OF THE PEOPLE OF THE CITY OF MANHATTAN BEACH RE-ADOPTING ORDINANCE NOS. 17-0024 AND 0025 TO CONTINUE TO PROHIBIT ALL COMMERCIAL CANNABIS ACTIVITIES IN THE CITY, AND DECLARING A CONFLICT WITH MEASURE ____ AND MEASURE __ ON THE NOVEMBER 8, 2022 GENERAL MUNICIPAL ELECTION, AND MAKING A FINDING OF EXEMPTION FROM CEQA UNDER SECTIONS 15061(b)(3) AND 15305 OF THE CEQA GUIDELINES

NOW, THEREFORE, THE PEOPLE OF THE CITY OF MANHATTAN BEACH DO ORDAIN AS FOLLOWS:

SECTION 1. Intent; Conflicting Measure. It is the intent of the voters that, pursuant to California Elections Code Section 9221, this Ordinance conflicts with Measures __ and __ on the November 8, 2022 General Municipal Election ballot and, if the measure adopting this Ordinance receives more affirmative votes, this Ordinance shall control and Measures __ and __ shall have no effect.

SECTION 2. On November 7, 2017, and in full compliance with the Medicinal and Adult-Use Cannabis Regulation and Safety Act (MAUCRSA), and Adult Use of Marijuana Act (AUMA), the Manhattan Beach City Council adopted Ordinance No. 17-0024 to amend the Manhattan Beach Municipal Code and Ordinance No. 17-0025 to amend the Manhattan Beach Local Coastal Program to, *inter alia*, prohibit all commercial cannabis activity in all zones in the City. Ordinance No. 17-0025 was subsequently certified by the California Coastal Commission.

SECTION 3. Re-Adoption. Ordinance Nos. 17-0024 and 17-0025, as attached hereto as exhibits A and B and incorporated herein by this reference, are hereby re-adopted in full by the voters of the City of Manhattan Beach. It is the intent of the voters to continue to prohibit, without any interruption, all commercial cannabis activities (as defined in the above-referenced ordinances) in the City of Manhattan Beach, and to maintain the other terms and provisions of Ordinance No. 17-0024 and Ordinance No. 17-0025.

SECTION 4. Severability. If any section, subsection, subdivision, sentence, clause, phrase, or portion of this Ordinance for any reason is held to be invalid or unconstitutional by the decision of any court of competent jurisdiction, such decision shall not affect the validity of the remaining portions of this Ordinance. The voters hereby declare that they would have adopted this Ordinance, and each section, subsection, subdivision, sentence, clause, phrase, or portion thereof, irrespective of the fact that any one or more sections, subsections, subdivisions, sentences, clauses, phrases, or portions thereof be declared invalid or unconstitutional.

SECTION 5. Restatement of Existing Law. Neither the adoption of this Ordinance nor the repeal of any other Ordinance of the City shall in any manner affect the prosecution for violations of ordinances, which violations were committed prior to the effective date hereof, nor

be construed as a waiver of any penalty or the penal provisions applicable to any violation thereof.

SECTION 6. Effective Date. This Ordinance shall take effect 10 days after the date the vote is declared by the City Council, and no conflicting ordinance shall take effect prior to the effective date of this Ordinance. The City Clerk shall take all actions necessary to publish this ordinance or a summary if required by law, and the Mayor is directed to sign this Ordinance upon its adoption.

SECTION 7. Notification. The City Attorney shall send a copy of this Ordinance and the ordinances it re-adopts to the Bureau of Cannabis Control immediately following its effective date.

SECTION 8. CEQA Exemption. The City Council’s action to place this Ordinance on the ballot and the voters’ adoption of this Ordinance are exempt from the California Environmental Quality Act (“CEQA”) pursuant to CEQA Guidelines Section 15061(b)(3) because it can be seen with certainty that there is no possibility that the ordinances re-adopted to continue to prohibit all commercial cannabis activities will have a significant effect on the environment since this represents no change from current law in the City. Since the re-adopted ordinances continue to prohibit all commercial activities and uses it will not result in changes in land use or density and will not have a significant environmental impact. Further, this ordinance is not a “project” within the meaning of CEQA. These actions are therefore exempt from the environmental review requirements of CEQA pursuant to Section 15305 of Title 14 of the California Code of Regulations. A Notice of Exemption shall be filed with the County Clerk of the County of Los Angeles in accordance with CEQA Guidelines.

SECTION 9. The City Clerk is hereby directed to insert the letters of the conflicting measures into the appropriate places in this Ordinance upon receiving the letter designations for such measures from Los Angeles County.

ADOPTED by the voters at the General Municipal Election held November 8, 2022 by the following vote:

Mayor

ATTEST:

Liza Tamura, City Clerk

EXHIBIT A
ORDINANCE NO. 17-0024

ORDINANCE NO. 17-0024

AN ORDINANCE OF THE CITY OF MANHATTAN BEACH AMENDING MUNICIPAL CODE TITLE 10 TO ADD THERETO CHAPTER 10.82 PROHIBITING ALL COMMERCIAL CANNABIS ACTIVITY IN ALL ZONES IN THE CITY, AND TO ALLOW LIMITED INDOOR CANNABIS CULTIVATION CONSISTENT WITH STATE LAW, AMENDING MUNICIPAL CODE SECTION 4.117.020 AND CHAPTER 4.136 OF TITLE 4, AND DELETING MUNICIPAL CODE SECTION 10.60.160

THE MANHATTAN BEACH CITY COUNCIL HEREBY ORDAINS AS FOLLOWS:

SECTION 1. On September 13, 2017, the Planning Commission conducted a duly noticed public hearing and adopted Resolution No. 17-07 recommending that the City Council adopt the proposed text Amendments to Title 10 to prohibit commercial cannabis and allow limited indoor cannabis.

SECTION 2. On October 17, 2017, the City Council held a duly noticed public hearing regarding the proposed Code Amendments, and following receipt of all public testimony, closed the public hearing.

SECTION 3. The proposed text amendments are consistent with the following General Plan Goals and Policies:

Land Use Element Goal LU-5 : Protect residential neighborhoods from the intrusion of inappropriate and incompatible uses.

Community Safety Element Goal CS-1: Minimize the risks to public health, safety, and welfare resulting from natural and human-caused hazards.

SECTION 4. The proposed text amendments have been prepared in accordance with the provisions of Title 7, Division 4, Section 65853, et seq., of the State of California Government Code.

SECTION 5. Section 10.60.160 (Medical Marijuana Dispensaries) of Chapter 10.60 (Site Regulations – All Districts) of Title 10 (Planning and Zoning) is hereby deleted in its entirety.

SECTION 6. Chapter 4.136 (Medical Marijuana Delivery) of Title 4 (Public Welfare, Morals and Conduct) is hereby amended in its entirety to read as follows:

“Chapter 4.136 CANNABIS ACTIVITIES

Section 4.136.010 Definitions.

Section 4.136.020 Prohibitions.

Section 4.136.030 Violation.

Section 4.136.010 Definitions.

A. "Cannabis" means all parts of the plant *Cannabis sativa linnaeus*, *Cannabis indica*, or *Cannabis ruderalis*, whether growing or not; the seeds thereof; the resin, whether crude or purified, extracted from any part of the plant; and every compound, manufacture, salt, derivative, mixture, or preparation of the plant, its seeds, or resin. "Cannabis" also means the separated resin, whether crude or purified, obtained from cannabis, and any product containing cannabis. "Cannabis" includes cannabis that is used for medical, non-medical, or other purposes.

"Cannabis" does not include the mature stalks of the plant, fiber produced from the stalks, oil or cake made from the seeds of the plant, any other compound, manufacture, salt, derivative, mixture, or preparation of the mature stalks (except the resin extracted therefrom), fiber, oil, or cake, or the sterilized seed of the plant which is incapable of germination. "Cannabis" also does not include industrial hemp, as defined in California Health and Safety Code section 11018.5, as the same may be amended from time to time.

B. "Cannabis products" means cannabis that has undergone a process whereby the plant material has been transformed into a concentrate, including, but not limited to concentrated cannabis, or an edible or topical product containing cannabis or concentrated cannabis and other ingredients.

C. "Commercial cannabis activity" means the cultivation, possession, manufacture, distribution, processing, storing, laboratory testing, labeling, packaging, transportation, delivery or sale of cannabis and cannabis products, for medical, non-medical or any other purpose, and includes the activities of any business licensed by the State or other government entity under Division 10 of the California Business and Professions Code, or any other provision of State law that regulates the licensing of cannabis businesses.

D. "Cultivation" means any activity involving the planting, growing, harvesting, drying, curing, grading, or trimming of cannabis.

E. "Delivery" means the commercial transfer of cannabis or cannabis products to a customer. "Delivery" also includes the use by a retailer of any technology platform owned and controlled by the retailer.

F. "Fully enclosed and secure structure" means a space within a building, greenhouse or other structure which has a complete solid roof enclosure supported by connecting walls extending from the ground to the roof, which is secure against unauthorized entry, provides complete visual screening, and which is accessible only through one or more lockable doors and inaccessible to minors.

G. "Indoors" means within a fully enclosed and secure structure.

H. "Outdoors" means any location that is not within a fully enclosed and secure structure.

I. "Person" means any individual, firm, partnership, joint venture, association, corporation, limited liability company, collective, cooperative, club, society, organization,

non-profit, estate, trust, business trust, receiver, syndicate, or any other group or combination acting as a unit, and the plural as well as the singular.

J. "Smoke" means to inhale, exhale, burn, or carry any lighted or heated device or pipe, or any other lighted or heated cannabis or cannabis product intended for inhalation, whether natural or synthetic, in any manner or in any form. "Smoke" includes the use of an electronic smoking device that creates an aerosol or vapor, in any manner or in any form, or the use of any oral smoking device for the purpose of circumventing the prohibition of smoking in a place.

Section 4.136.020 Prohibitions.

A. It is unlawful for any person to own, manage, establish, conduct, or operate, or to participate as a landlord, owner, employee, contractor, agent or volunteer, or in any other manner or capacity, in any commercial cannabis activity in the city. The city shall not approve any application for a building permit, conditional use permit, business license, or any other entitlement authorizing the establishment, operation, maintenance, development, or construction of any use that allows for commercial cannabis activity.

B. It is unlawful for any person to own, manage, conduct, or operate any cannabis delivery, or to participate as an employee, contractor, agent, or volunteer, in any manner or capacity, in any cannabis delivery in the city.

C. It is unlawful for any person to cultivate cannabis outdoors. Indoor cannabis cultivation is prohibited except as specified in section 10.82.040(A)(5) of this Code.

D. In accordance with Health and Safety Code Section 11362.3, as the same may be amended from time to time, it is unlawful for any person to smoke or ingest cannabis or cannabis products in a public place, or in any location where smoking tobacco is prohibited.

This Section shall be read and interpreted in conjunction with Municipal Code Chapter 10.82. It is the intent of the City Council to prohibit all commercial cannabis activity and uses in the City that are not otherwise preempted by State law.

Section 4.136.030 Violation.

Violations of this chapter are subject to the penalty provisions set forth in Municipal Code Chapters 1.04 and 1.06. In the discretion of the City Prosecutor, a violation of this chapter may be prosecuted as an infraction or misdemeanor. In any civil action brought pursuant to this chapter, a court of competent jurisdiction may award reasonable attorneys' fees and costs to the prevailing party. Notwithstanding the penalties set forth in Municipal Code Chapters 1.04 and 1.06, this chapter does not authorize a criminal prosecution, arrest or penalty inconsistent with or prohibited by Health and Safety Code Section 11362.71 *et seq.* or Section 11362.1 *et seq.*, as the same may be amended from time to time. In the event of any conflict between the penalties enumerated under Municipal Code Chapters 1.04 and 1.06, and any penalties set forth in state law, the maximum penalties allowable under state law shall govern."

SECTION 7. Chapter 10.82 is hereby added to Title 10 (Planning and Zoning) to read as follows:

“Chapter 10.82 CANNABIS

- Section 10.82.010 Definitions.**
- Section 10.82.020 Prohibitions.**
- Section 10.82.030 Exceptions.**
- Section 10.82.040 Violation.**

10.82.010 Definitions.

For purposes of this chapter, the following definitions shall apply.

A. “Cannabis” means all parts of the plant *Cannabis sativa linnaeus*, *Cannabis indica*, or *Cannabis ruderalis*, whether growing or not; the seeds thereof; the resin, whether crude or purified, extracted from any part of the plant; and every compound, manufacture, salt, derivative, mixture, or preparation of the plant, its seeds, or resin. “Cannabis” also means the separated resin, whether crude or purified, obtained from cannabis, and any product containing cannabis. “Cannabis” includes cannabis that is used for medical, non-medical, or other purposes.

“Cannabis” does not include the mature stalks of the plant, fiber produced from the stalks, oil or cake made from the seeds of the plant, any other compound, manufacture, salt, derivative, mixture, or preparation of the mature stalks (except the resin extracted therefrom), fiber, oil, or cake, or the sterilized seed of the plant which is incapable of germination. “Cannabis” also does not include industrial hemp, as defined in California Health and Safety Code section 11018.5, as the same may be amended from time to time.

B. “Cannabis accessories” means any equipment, products or materials of any kind which are used, intended for use, or designed for use in planting, propagating, cultivating, growing, harvesting, manufacturing, compounding, converting, producing, processing, preparing, testing, analyzing, packaging, repackaging, storing, smoking, vaporizing, or containing cannabis, or for ingesting, inhaling, or otherwise introducing cannabis or cannabis products into the human body.

C. “Cannabis products” means cannabis that has undergone a process whereby the plant material has been transformed into a concentrate, including, but not limited to concentrated cannabis, or an edible or topical product containing cannabis or concentrated cannabis and other ingredients.

D. “Commercial cannabis activity” means the cultivation, possession, manufacture, distribution, processing, storing, laboratory testing, labeling, packaging, transportation, delivery or sale of cannabis and cannabis products, for medical, non-medical or any other purpose, and includes the activities of any business licensed by the State or other government entity under Division 10 of the California Business and Professions Code, or any other provision of State law that regulates the licensing of cannabis businesses.

E. "Concentrated cannabis" means cannabis that has undergone a process to concentrate one or more active cannabinoids, thereby increasing the product's potency. Resin from granular trichomes from a cannabis plant is a concentrate.

F. "Cultivation" means any activity involving the planting, growing, harvesting, drying, curing, grading, or trimming of cannabis.

G. "Delivery" means the commercial transfer of cannabis or cannabis products to a customer. "Delivery" also includes the use by a retailer of any technology platform owned and controlled by the retailer.

H. "Distribution" means the procurement, sale, and transport of cannabis and cannabis products between entities licensed under Division 10 of the California Business and Professions Code, as the same may be amended from time to time.

I. "Fully enclosed and secure structure" means a space within a building, greenhouse or other structure which has a complete solid roof enclosure supported by connecting walls extending from the ground to the roof, which is secure against unauthorized entry, provides complete visual screening, and which is accessible only through one or more lockable doors and inaccessible to minors.

J. "Indoors" means within a fully enclosed and secure structure.

K. "Manufacture" means to compound, blend, extract, infuse, or otherwise make or prepare a cannabis product.

L. "MAUCRSA" means the Medicinal and Adult-Use Cannabis Regulation and Safety Act, as codified in Division 10 of the California Business and Professions Code, as the same may be amended from time to time.

M. "Outdoors" means any location that is not within a fully enclosed and secure structure.

N. "Person" means any individual, firm, partnership, joint venture, association, corporation, limited liability company, collective, cooperative, club, society, organization, non-profit, estate, trust, business trust, receiver, syndicate, or any other group or combination acting as a unit, and the plural as well as the singular.

O. "Private residence" means a house, an apartment unit, a condominium unit, a mobile home, or other similar dwelling, that is lawfully used as a residence.

10.82.020 Prohibitions.

A. Commercial cannabis activity, whether or not for profit, is not a permitted use anywhere in the city. The city shall not approve any application for a building permit, conditional use permit, business license, or any other entitlement authorizing the establishment, operation, maintenance, development, or construction of any use that allows for commercial cannabis activity. This section shall prohibit all activities for which a State license is required pursuant to the MAUCRSA, as the same may be amended from time to time.

B. It shall be unlawful for any person to own, manage, establish, conduct, or operate, or to participate as a landlord, owner, employee, contractor, agent or volunteer, or in any other manner or capacity, in any commercial cannabis activity in the city.

C. To the extent not already prohibited by subsection A above, all deliveries of cannabis or cannabis products to or from any location in the city are expressly prohibited. No person shall conduct or perform any delivery of any cannabis or cannabis products, which delivery either originates or terminates within the city. This subsection shall not prohibit any person from transporting cannabis through the jurisdictional limits of the city for delivery or distribution to a person located outside the city, where such transport does not involve delivery or distribution within the jurisdictional limits of the city.

D. All outdoor cannabis cultivation is prohibited in the city. Indoor cannabis cultivation is prohibited except as specified in section 10.82.040(A)(5).

10.82.030 Exceptions.

A. To the extent that the following activities are permitted by State law, nothing in this chapter shall prohibit a person 21 years of age or older from:

1. Possessing, processing, purchasing, transporting, obtaining or giving away to persons 21 years of age or older, without compensation whatsoever, not more than 28.5 grams of cannabis not in the form of concentrated cannabis;

2. Possessing, processing, purchasing, transporting, obtaining or giving away to persons 21 years of age or older, without compensation whatsoever, up to eight grams of cannabis in the form of concentrated cannabis;

3. Possessing, transporting, purchasing, obtaining, using, manufacturing, or giving away cannabis accessories to persons 21 years of age or older without compensation whatsoever; or

4. Engaging in the indoor cultivation of six or fewer live cannabis plants within a single private residence or inside an accessory structure located upon the grounds of a private residence that is fully enclosed and secured, to the extent such cultivation is authorized by California Health and Safety Code sections 11362.1 and 11362.2, as the same may be amended from time to time.

B. This chapter shall also not prohibit any commercial cannabis activity that the city is required by law to permit within its jurisdiction pursuant to state law.

10.82.040 Violation.

Violations of this chapter are subject to the penalty provisions set forth in Municipal Code Chapters 1.04 and 1.06. In the discretion of the City Prosecutor, a violation of this chapter may be prosecuted as an infraction or misdemeanor. In any civil action brought pursuant to this chapter, a court of competent jurisdiction may award reasonable attorneys' fees and costs to the prevailing party. Notwithstanding the penalties set forth in Municipal Code Chapters 1.04 and 1.06, this chapter does not authorize a criminal prosecution, arrest or penalty inconsistent with or prohibited by Health and Safety Code

Section 11362.71 *et seq.* or Section 11362.1 *et seq.*, as the same may be amended from time to time. In the event of any conflict between the penalties enumerated under Municipal Code Chapters 1.04 and 1.06, and any penalties set forth in state law, the maximum penalties allowable under state law shall govern.”

SECTION 8. Section 4.117.020 (Definitions) of Chapter 4.117 (Regulation of Smoking in Multi-unit Housing) of Title 4 (Public Welfare, Morals and Conduct) is hereby amended to revise the definition of “Smoke” with all other provisions of Section 4.117.020 remaining unchanged:

““Smoke” shall have the meaning ascribed in Section 4.116.020 of this Code.”

SECTION 9. CALIFORNIA ENVIRONMENTAL QUALITY ACT EXEMPTION. The City Council determines that this ordinance is exempt from review under the California Environmental Quality Act (California Public Resources Code §§ 21000, *et seq.*, “CEQA”) and the regulations promulgated thereunder (14 California Code of Regulations §§ 15000, *et seq.*, the “CEQA Guidelines”). It can be seen with certainty that there is no possibility that the adoption of this Ordinance, and the regulations established hereby, may have a significant effect on the environment, and the action taken herein is not a “project” within the meaning of CEQA.

SECTION 10. INTERNAL CONSISTENCY. Any provisions of the Municipal Code, or any other resolution or ordinance of the City, to the extent that they are inconsistent with this Ordinance are hereby repealed, and the City Clerk shall make any necessary changes to the Municipal Code for internal consistency.

SECTION 11. SEVERABILITY. If any part of this Ordinance or its application is deemed invalid by a court of competent jurisdiction, the City Council intends that such invalidity will not affect the effectiveness of the remaining provisions or their application and, to this end, the provisions of this Ordinance are severable.

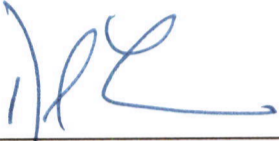
SECTION 12. SAVINGS CLAUSE. Neither the adoption of this Ordinance nor the repeal or amendment by this Ordinance of any ordinance or part or portion of any ordinance previously in effect in the City, or within the territory comprising the City, shall waive of any license, fee or penalty or the penal provisions applicable to any violation of such ordinance.

SECTION 13. CERTIFICATION. The City Clerk shall certify to the passage and adoption of this Ordinance and shall cause this Ordinance to be published within 15 days after its passage, in accordance with Section 36933 of the Government Code.

SECTION 14. EFFECTIVE DATE. This Ordinance shall go into effect and be in full force and effect at 12:01 a.m. on the 31st day after its passage.


ADOPTED on November 7, 2017.

AYES: Montgomery, Hersman, Napolitano, Howorth and Mayor Lesser.
NOES: None.
ABSENT: None.
ABSTAIN: None.



DAVID LESSER
Mayor

ATTEST:



LIZA TAMURA
City Clerk

STATE OF CALIFORNIA)
COUNTY OF LOS ANGELES) SS.
CITY OF MANHATTAN BEACH)

I, Liza Tamura, City Clerk of the City of Manhattan Beach, California, do hereby certify that the whole number of members of the City Council of said City is five; that the foregoing Ordinance, being Ordinance No. 17-0024 was duly passed and adopted by the said City Council, approved and signed by the Mayor, and attested by the City Clerk, of said City, all at a regular meeting of the said Council duly and regularly held on the 7th day of November 2017, and that the same was so passed and adopted by the following vote, to wit:

Ayes: Montgomery, Hersman, Napolitano, Howorth and Mayor Lesser.
Noes: None.
Absent: None.
Abstain: None.

IN WITNESS WHEREOF, I have hereunto subscribed my name and affixed the official seal of said City this 8th day of November, 2017.



City Clerk of the City of
Manhattan Beach, California

(SEAL)

CERTIFICATE OF PUBLICATION

STATE OF CALIFORNIA)
COUNTY OF LOS ANGELES) SS.
CITY OF MANHATTAN BEACH)

I, Liza Tamura, City Clerk of the City of Manhattan Beach, California, do hereby certify that Ordinance No. 17-0024 has been duly and regularly published according to law and the order of the City Council of said City and that same was so published in The Beach Reporter, a weekly newspaper of general circulation on the following date, to wit November 16th, 2017 and in witness whereof, I have hereunto subscribed my name this 17th day of November, 2017.



City Clerk of the City of
Manhattan Beach, California

EXHIBIT B
ORDINANCE NO. 17-0025

ORDINANCE NO. 17-0025

ORDINANCE OF THE CITY OF MANHATTAN BEACH
AMENDING LOCAL COASTAL PROGRAM TITLE A TO ADD
THERETO CHAPTER A.82 PROHIBITING ALL
COMMERCIAL CANNABIS ACTIVITY IN ALL ZONES IN
THE CITY, AND TO ALLOW LIMITED INDOOR CANNABIS
CULTIVATION CONSISTENT WITH STATE LAW, AND
DELETING LOCAL COASTAL PROGRAM SECTION
A.60.160

THE CITY OF MANHATTAN BEACH DOES HEREBY ORDAIN AS FOLLOWS:

SECTION 1. On September 13, 2017, the Planning Commission conducted a duly noticed public hearing and adopted Resolution No. 17-07 recommending that the City Council adopt the proposed text Amendments to Title A to prohibit commercial cannabis and allow limited indoor cannabis.

SECTION 2. On October 17, 2017, the City Council held a duly noticed public hearing regarding the proposed Code Amendments, and following receipt of all public testimony, closed the public hearing.

SECTION 3. The proposed text amendments are consistent with the following Local Coastal Program Policy:

II. Coastal Locating and Planning New Development Policy- Policy II.1:
Control Development within the Manhattan Beach coastal zone.

SECTION 4. The proposed text amendments have been prepared in accordance with the provisions of Title 7, Division 4, Section 65853, et seq., of the State of California Government Code.

SECTION 5. Section A.60.160 (Medical Marijuana Dispensaries) of Chapter A.60 (Site Regulations – All Districts) of Title A (Planning and Zoning) is hereby deleted in its entirety.

SECTION 6. Chapter A.82 is hereby added to Title A (Planning and Zoning) to read as follows:

“Chapter A.82 CANNABIS

Section A.82.010 Definitions.
Section A.82.020 Prohibitions.
Section A.82.030 Exceptions.
Section A.82.040 Violation.

A.82.10 Definitions.

For purposes of this chapter, the following definitions shall apply.

A. "Cannabis" means all parts of the plant *Cannabis sativa linnaeus*, *Cannabis indica*, or *Cannabis ruderalis*, whether growing or not; the seeds thereof; the resin, whether crude or purified, extracted from any part of the plant; and every compound, manufacture, salt, derivative, mixture, or preparation of the plant, its seeds, or resin. "Cannabis" also means the separated resin, whether crude or purified, obtained from cannabis, and any product containing cannabis. "Cannabis" includes cannabis that is used for medical, non-medical, or other purposes.

"Cannabis" does not include the mature stalks of the plant, fiber produced from the stalks, oil or cake made from the seeds of the plant, any other compound, manufacture, salt, derivative, mixture, or preparation of the mature stalks (except the resin extracted therefrom), fiber, oil, or cake, or the sterilized seed of the plant which is incapable of germination. "Cannabis" also does not include industrial hemp, as defined in California Health and Safety Code section 11018.5, as the same may be amended from time to time.

B. "Cannabis accessories" means any equipment, products or materials of any kind which are used, intended for use, or designed for use in planting, propagating, cultivating, growing, harvesting, manufacturing, compounding, converting, producing, processing, preparing, testing, analyzing, packaging, repackaging, storing, smoking, vaporizing, or containing cannabis, or for ingesting, inhaling, or otherwise introducing cannabis or cannabis products into the human body.

C. "Cannabis products" means cannabis that has undergone a process whereby the plant material has been transformed into a concentrate, including, but not limited to concentrated cannabis, or an edible or topical product containing cannabis or concentrated cannabis and other ingredients.

D. "Commercial cannabis activity" means the cultivation, possession, manufacture, distribution, processing, storing, laboratory testing, labeling, packaging, transportation, delivery or sale of cannabis and cannabis products, for medical, non-medical or any other purpose, and includes the activities of any business licensed by the State or other government entity under Division 10 of the California Business and Professions Code, or any other provision of State law that regulates the licensing of cannabis businesses.

E. "Concentrated cannabis" means cannabis that has undergone a process to concentrate one or more active cannabinoids, thereby increasing the product's potency. Resin from granular trichomes from a cannabis plant is a concentrate.

F. "Cultivation" means any activity involving the planting, growing, harvesting, drying, curing, grading, or trimming of cannabis.

G. "Delivery" means the commercial transfer of cannabis or cannabis products to a customer. "Delivery" also includes the use by a retailer of any technology platform owned and controlled by the retailer.

H. "Distribution" means the procurement, sale, and transport of cannabis and cannabis products between entities licensed under Division 10 of the California Business and Professions Code, as the same may be amended from time to time.

I. "Fully enclosed and secure structure" means a space within a building, greenhouse or other structure which has a complete solid roof enclosure supported by connecting walls extending from the ground to the roof, which is secure against unauthorized entry, provides complete visual screening, and which is accessible only through one or more lockable doors and inaccessible to minors.

J. "Indoors" means within a fully enclosed and secure structure.

K. "Manufacture" means to compound, blend, extract, infuse, or otherwise make or prepare a cannabis product.

L. "MAUCRSA" means the Medicinal and Adult-Use Cannabis Regulation and Safety Act, as codified in Division 10 of the California Business and Professions Code, as the same may be amended from time to time.

M. "Outdoors" means any location that is not within a fully enclosed and secure structure.

N. "Person" means any individual, firm, partnership, joint venture, association, corporation, limited liability company, collective, cooperative, club, society, organization, non-profit, estate, trust, business trust, receiver, syndicate, or any other group or combination acting as a unit, and the plural as well as the singular.

O. "Private residence" means a house, an apartment unit, a condominium unit, a mobile home, or other similar dwelling, that is lawfully used as a residence.

A.82.020 Prohibitions.

A. Commercial cannabis activity, whether or not for profit, is not a permitted use anywhere in the city. The city shall not approve any application for a building permit, conditional use permit, business license, or any other entitlement authorizing the establishment, operation, maintenance, development, or construction of any use that allows for commercial cannabis activity. This section shall prohibit all activities for which a State license is required pursuant to the MAUCRSA, as the same may be amended from time to time.

B. It shall be unlawful for any person to own, manage, establish, conduct, or operate, or to participate as a landlord, owner, employee, contractor, agent or volunteer, or in any other manner or capacity, in any commercial cannabis activity in the city.

C. To the extent not already prohibited by subsection A above, all deliveries of cannabis or cannabis products to or from any location in the city are expressly prohibited. No person shall conduct or perform any delivery of any cannabis or cannabis products, which delivery either originates or terminates within the city. This subsection shall not prohibit any person from transporting cannabis through the jurisdictional limits of the city for delivery or distribution to a person located outside the city, where such transport does not involve delivery or distribution within the jurisdictional limits of the city.

D. All outdoor cannabis cultivation is prohibited in the city. Indoor cannabis cultivation is prohibited except as specified in section A.82.040(A)(5).

A.82.030 Exceptions.

A. To the extent that the following activities are permitted by State law, nothing in this chapter shall prohibit a person 21 years of age or older from:

1. Possessing, processing, purchasing, transporting, obtaining or giving away to persons 21 years of age or older, without compensation whatsoever, not more than 28.5 grams of cannabis not in the form of concentrated cannabis;

2. Possessing, processing, purchasing, transporting, obtaining or giving away to persons 21 years of age or older, without compensation whatsoever, up to eight grams of cannabis in the form of concentrated cannabis;

3. Possessing, transporting, purchasing, obtaining, using, manufacturing, or giving away cannabis accessories to persons 21 years of age or older without compensation whatsoever; or

4. Engaging in the indoor cultivation of six or fewer live cannabis plants within a single private residence or inside an accessory structure located upon the grounds of a private residence that is fully enclosed and secured, to the extent such cultivation is authorized by California Health and Safety Code sections 11362.1 and 11362.2, as the same may be amended from time to time.

B. This chapter shall also not prohibit any commercial cannabis activity that the city is required by law to permit within its jurisdiction pursuant to state law.

A.82.040 Violation.

Violations of this chapter are subject to the penalty provisions set forth in Municipal Code Chapters 1.04 and 1.06. In the discretion of the City Prosecutor, a violation of this chapter may be prosecuted as an infraction or misdemeanor. In any civil action brought pursuant to this chapter, a court of competent jurisdiction may award reasonable attorneys' fees and costs to the prevailing party. Notwithstanding the penalties set forth in Municipal Code Chapters 1.04 and 1.06, this chapter does not authorize a criminal prosecution, arrest or penalty inconsistent with or prohibited by Health and Safety Code Section 11362.71 *et seq.* or Section 11362.1 *et seq.*, as the same may be amended from time to time. In the event of any conflict between the penalties enumerated under Municipal Code Chapters 1.04 and 1.06, and any penalties set forth in state law, the maximum penalties allowable under state law shall govern."

SECTION 7. CALIFORNIA ENVIRONMENTAL QUALITY ACT EXEMPTION. The City Council determines that this ordinance is exempt from review under the California Environmental Quality Act (California Public Resources Code §§ 21000, *et seq.*, "CEQA") and the regulations promulgated thereunder (14 California Code of Regulations §§ 15000, *et seq.*, the "CEQA Guidelines"). It can be seen with certainty that there is no possibility that the adoption of this Ordinance, and the regulations established hereby, may have a significant effect on the environment, and the action taken herein is not a "project" within the meaning of CEQA.

SECTION 8. INTERNAL CONSISTENCY. Any provisions of the Municipal Code, or any other resolution or ordinance of the City, to the extent that they are inconsistent with this Ordinance are hereby repealed, and the City Clerk shall make any necessary changes to the Municipal Code for internal consistency.

SECTION 9. SEVERABILITY. If any part of this Ordinance or its application is deemed invalid by a court of competent jurisdiction, the City Council intends that such invalidity will not affect the effectiveness of the remaining provisions or their application and, to this end, the provisions of this Ordinance are severable.

SECTION 10. SAVINGS CLAUSE. Neither the adoption of this Ordinance nor the repeal or amendment by this Ordinance of any ordinance or part or portion of any ordinance previously in effect in the City, or within the territory comprising the City, shall waive of any license, fee or penalty or the penal provisions applicable to any violation of such ordinance.

SECTION 11. CERTIFICATION. The City Clerk shall certify to the passage and adoption of this Ordinance and shall cause this Ordinance to be published within 15 days after its passage, in accordance with Section 36933 of the Government Code.

SECTION 12. EFFECTIVE DATE. This Ordinance shall go into effect and be in full force and effect after certification by the California Coastal Commission.


ADOPTED on November 7, 2017.

AYES: Montgomery, Hersman, Napolitano, Howorth and Mayor Lesser.
NOES: None.
ABSENT: None.
ABSTAIN: None.



DAVID LESSER
Mayor

ATTEST:



LIZA TAMURA
City Clerk

STATE OF CALIFORNIA)
COUNTY OF LOS ANGELES) SS.
CITY OF MANHATTAN BEACH)

I, Liza Tamura, City Clerk of the City of Manhattan Beach, California, do hereby certify that the whole number of members of the City Council of said City is five; that the foregoing Ordinance, being Ordinance No. 17-0025 was duly passed and adopted by the said City Council, approved and signed by the Mayor, and attested by the City Clerk, of said City, all at a regular meeting of the said Council duly and regularly held on the 7th day of November 2017, and that the same was so passed and adopted by the following vote, to wit:

Ayes: Montgomery, Hersman, Napolitano, Howorth and Mayor Lesser.
Noes: None.
Absent: None.
Abstain: None.

IN WITNESS WHEREOF, I have hereunto subscribed my name and affixed the official seal of said City this 8th day of November, 2017.



City Clerk of the City of
Manhattan Beach, California

(SEAL)

CERTIFICATE OF PUBLICATION

STATE OF CALIFORNIA)
COUNTY OF LOS ANGELES) SS.
CITY OF MANHATTAN BEACH)

I, Liza Tamura, City Clerk of the City of Manhattan Beach, California, do hereby certify that Ordinance No. 17-0025 has been duly and regularly published according to law and the order of the City Council of said City and that same was so published in The Beach Reporter, a weekly newspaper of general circulation on the following date, to wit November 16th, 2017 and in witness whereof, I have hereunto subscribed my name this 17th day of November, 2017.



City Clerk of the City of
Manhattan Beach, California

ORDINANCE NO. ____

AN ORDINANCE OF THE PEOPLE OF THE CITY OF MANHATTAN BEACH AMENDING THE MANHATTAN BEACH MUNICIPAL CODE TO: (1) REPEAL CHAPTER 4.136, (2) ADD A NEW CHAPTER 4.136 REGARDING PERMITTED COMMERCIAL CANNABIS ACTIVITIES, (3) ADD A NEW CHAPTER 8.38 PERTAINING TO CANNABIS BUSINESS TAX REGULATIONS, (4) AMEND SECTION 10.16.020 TO MAKE COMMERCIAL CANNABIS USE A PERMITTED USE IN THE GENERAL COMMERCIAL (CG) AND NORTH END COMMERCIAL (CNE) DISTRICTS, AND (5) AMEND SECTION 10.82.020 TO THE PERTAINING TO EXEMPTED CANNABIS ACTIVITIES; DECLARING A CONFLICT WITH MEASURES ____ AND ____ ON THE NOVEMBER 8, 2022 GENERAL MUNICIPAL ELECTION; AND MAKING A FINDING OF EXEMPTION FROM CEQA UNDER SECTIONS 15061(b)(3) AND 15308 OF THE CEQA GUIDELINES

NOW, THEREFORE, THE PEOPLE OF THE CITY OF MANHATTAN BEACH DO ORDAIN AS FOLLOWS:

SECTION 1. Intent; Conflicting Measure. It is the intent of the voters that, pursuant to California Elections Code Section 9221, this Ordinance conflicts with Measures ____ and ____ on the November 8, 2022 General Municipal Election ballot and, if the measure adopting this Ordinance receives more affirmative votes, this Ordinance shall control and Measures ____ and ____ shall have no effect.

SECTION 2. Section 10.82.020 of Chapter 10.82 (Cannabis) of Title 10 (Planning and Zoning) of the Manhattan Beach Municipal Code is amended to read as follows:

“A Except as specifically authorized in Chapter 4.136, commercial cannabis activity is prohibited in the City. This chapter shall not operate to prohibit any commercial cannabis activity that the City is preempted from prohibiting due to any State law or regulation.

B. It is unlawful for any person to engage in commercial cannabis activity without a cannabis regulatory permit issued pursuant to Chapter 4.136 for each location where the commercial cannabis activity occurs.

C. It is unlawful for any person to violate any rules, regulations and standards promulgated by the City Manager pertaining to cannabis businesses.

D. All outdoor cannabis cultivation is prohibited in the City. Indoor cannabis cultivation is prohibited except as specified in section 10.82.030(A)(4).”

SECTION 3. Chapter 4.136 (Cannabis Activities) of Title 4 (Public Welfare Morals and Conduct) of the Manhattan Beach Municipal Code is repealed in full and replaced with a new Chapter 4.136 (Cannabis Regulatory Permit) to read as follows:

“Chapter 4.136 Cannabis Regulatory Permit

4.136.010 Purpose.

It is the purpose and intent of this chapter to implement the provisions of the Medicinal and Adult Use Cannabis Regulation and Safety Act (“MAUCRSA”) to accommodate the needs of medically-ill persons in need of cannabis for medicinal purposes as recommended by their health care provider(s), and to provide access to same. It is also the purpose and intent of this chapter to provide access to adult-use cannabis for persons aged twenty-one (21) and over as authorized by the Adult Use of Marijuana Act (“AUMA” or “Proposition 64”) approved by California voters in 2016, while imposing reasonable regulations to protect the City’s residents, neighborhoods and businesses from disproportionately negative impacts. As such, it is the purpose and intent of this chapter to regulate the sale of cannabis and cannabis products in a responsible manner to protect the health, safety and welfare of the residents of the City of Manhattan Beach and to enforce rules and regulations consistent with state law. It is the further purpose and intent of this chapter to require all cannabis businesses to obtain and renew annually a permit to operate within the City of Manhattan Beach. Nothing in this chapter is intended to authorize the possession, use or provision of cannabis for purposes that violate state law.

4.136.020 Definitions.

For the purpose of this chapter, the following words and phrases shall be defined as follows:

A. “Applicant” means an owner applying for a cannabis regulatory permit pursuant to this chapter.

B. “Beach” has the same meaning as set forth in Section 12.01.020 of this Code, as the same may be amended from time to time.

C. “Cannabis” means all parts of the plant *Cannabis sativa* Linnaeus, *Cannabis indica*, or *Cannabis ruderalis*, whether growing or not; the seeds thereof; the resin, whether crude or purified, extracted from any part of the plant; and every compound, manufacture, salt, derivative, mixture, or preparation of the plant, its seeds, or resin. “Cannabis” also means the separated resin, whether crude or purified, obtained from cannabis. “Cannabis” does not include the mature stalks of the plant, fiber produced from the stalks, oil or cake made from the seeds of the plant, any other compound, manufacture, salt, derivative, mixture, or preparation of the mature stalks (except the resin extracted therefrom), fiber, oil, or cake, or the sterilized seed of the plant that is incapable of germination. For the purpose of this chapter, “cannabis” does

not include “industrial hemp” as defined by California Health and Safety Code Section 11018.5, as the same may be amended from time to time.

D. “Cannabis business” means a retailer, microbusiness, cultivation facility, distribution facility, manufacturing facility or a testing laboratory engaged in commercial cannabis activity. “Cannabis business” also means any business activity involving cannabis, including, but not limited to, cultivating, transporting, distributing, manufacturing, compounding, converting, processing, preparing, storing, packaging, delivering, testing, dispensing, retailing and wholesaling of cannabis, of cannabis products or of ancillary products and accessories, whether or not carried on for gain or profit.

E. “Cannabis goods” means cannabis, including dried flower, and cannabis products.

F. “Cannabis products” means cannabis that has undergone a process whereby the plant material has been transferred into a concentrate including, but not limited to, concentrated cannabis, or an edible or topical product containing cannabis or concentrated cannabis or other ingredient.

G. “City” means the City of Manhattan Beach.

H. “City Manager” means the City Manager, or his or her designee.

I. “Convicted” or “conviction” means a plea or verdict of guilty or a conviction following a plea of nolo contendere was entered, but does not include any plea, verdict or conviction that is expunged pursuant to California law or a similar federal or state law where the expungement was granted.

J. “Commercial cannabis activity” includes the cultivation, possession, manufacture, distribution, processing, storing, laboratory testing, packaging, labeling, transportation, delivery or sale of cannabis and cannabis products, or engaging in any other cannabis activity that requires a state license issued by a licensing authority.

K. “Cultivation” means any activity involving the planting, growing, harvesting, drying, curing, grading or trimming of cannabis.

L. “Cultivation facility” means a location where cannabis is planted, grown, harvested, dried, cured, graded or trimmed, or a location where any combination of those activities occurs.

M. “Day care center” has the same meaning as set forth in California Health and Safety Code Section 1596.76, as the same may be amended from time to time.

N. “Delivery” means the commercial transfer of cannabis or cannabis products to a customer. Delivery also includes the use by a retailer of any technology platform.

O. “Distribution” means the procurement, sale and transport of cannabis and cannabis products between retailers, cultivation facilities, manufacturing facilities and testing laboratories.

P. “Distribution facility” means a business that transports cannabis goods between retailers, cultivation facilities, manufacturing facilities, and testing laboratories, arranges for testing of cannabis goods, and conducts quality assurance review of cannabis goods to ensure compliance with all packaging and labeling requirements.

Q. “Extract” means a process by which cannabinoids are separated from cannabis plant material through chemical or physical means.

R. “Infuse” or “infusion” means a process by which cannabis, cannabinoids or cannabis concentrates are directly incorporated into a product formulation to produce a cannabis product.

S. “Licensee” means a cannabis business that has obtained a State license.

T. “Licensing authority” means the California Department of Cannabis Control or any other state cannabis licensing authority.

U. “Manufacture” means to compound, blend, extract, infuse or otherwise make or prepare a cannabis product.

V. “Manufacturing facility” means a business that engages in all aspects of the extraction and/or infusion processes, including processing, preparing, holding, storing, packaging or labeling of cannabis products. Manufacturing also includes any processing, preparing, holding or storing of components and ingredients.

Z. “Microbusiness” means a business that engages in the cultivation of cannabis on an area less than ten thousand (10,000) square feet and acts as a licensed distribution facility, and Level 1 manufacturer (State license Type 6). A microbusiness shall not act as a retailer.

W. “Owner” means any of the following:

1. A person with an aggregate ownership interest of twenty (20) percent or more in the person applying for a permit or a permittee, unless the interest is solely a security, lien or encumbrance;
2. The chief executive officer of a nonprofit or other entity;
3. A member of the board of directors of a nonprofit; or
4. An individual who will be participating in the direction, control or management of the person applying for a permit.

X. “Operations plan” means an operating plan approved by the City Manager in consultation with the Police Chief, that implements the standard requirements of this chapter along with such additional, reasonable, criteria needed to protect public health and safety as determined by the City Manager in consultation with the Police Chief, based upon the size and location of the proposed cannabis business.

Y. “Package” or “Packaging” means any container or wrapper that may be used for enclosing or containing any cannabis product. The term “package” or “packaging” does not include any shipping container or outer wrapping used solely for the transportation of cannabis products in bulk quantity to another licensee or licensed premises.

Z. “Park” shall mean and include any City owned or operated recreational facility including, but not limited to, parks, parkettes, athletic fields, tennis courts, basketball courts or other such public recreational area, excluding the Veterans Parkway as defined in Section 12.12.010 of this Code.

AA. “Permit” means a cannabis regulatory permit issued under this chapter and any rules, regulations and standards promulgated by the City Manager.

BB. “Permittee” means any person holding a permit under this chapter.

CC. “Person” includes any individual, firm, partnership, joint venture, association, corporation, limited liability company, estate, trust, business trust, receiver, syndicate, non-profit or any other group or combination acting as a unit, and the plural as well as the singular.

DD. “Police Chief” means the Chief of Police for Manhattan Beach or his or her designee.

EE. “Premises” means the designated structure or structures and land specified in the application that is owned, leased or otherwise held under the control of the applicant or permittee where the commercial cannabis activity will be or is conducted.

FF. “Religious assembly” has the same meaning as set forth in Section 10.08.040 of this Code, as the same may be amended from time to time.

GG. “Retailer” means a cannabis business that engages in the retail sale of cannabis and cannabis products to customers.

HH. “Sensitive use” means the beach, the County of Los Angeles Public Library—Manhattan Beach Library, a school, a day care center, a youth center, a religious assembly, or park.

II. “School” has the same meaning as set forth in Section 11362.768 of the California Health and Safety Code, as the same may be amended from time to time.

JJ. “State license” means a license issued by the California Department of Cannabis Control or any other State licensing authority for cannabis businesses.

KK. “Storefront retailer” means a retailer that has a physical location (premises), including an address where commercial cannabis activities are conducted, and that sells cannabis goods to customers at its premises.

LL. “Testing laboratory” means a laboratory, facility, or entity in the City that offers or performs tests of cannabis or cannabis products and that is both of the following:

1. Accredited by an accrediting body that is independent from all other persons involved in commercial cannabis activity in the state; and
2. Licensed by the California Department of Cannabis Control.

MM. “Transport” means the transfer of cannabis products from the permitted business location of one licensee to the permitted business location of another licensee, for the purposes of conducting commercial cannabis activity authorized by MAUCRSA. Transport can only be performed by licensed distributors and does not include deliveries of cannabis or cannabis products.

NN. “Youth center” has the same meaning as set forth in California Health and Safety Code Section 11353.1, as the same may be amended from time to time.

4.136.030 Commercial cannabis activity prohibited unless expressly authorized.

A. Except as specifically authorized in this chapter, commercial cannabis activity is prohibited in the City. This chapter shall not operate to prohibit any commercial cannabis activity that the City is preempted from prohibiting due to any State law or regulation.

B. It is unlawful for any person to engage in commercial cannabis activity without a cannabis regulatory permit for each location where the commercial cannabis activity occurs.

C. Unless otherwise provided by this chapter, it is unlawful for any person to engage in commercial cannabis activity from other than a fixed location within the City's jurisdiction for which a valid cannabis regulatory permit has been obtained and remains in effect.

D. It is unlawful for any person to cause, permit, aid, abet or conceal a violation of any provision of this chapter.

4.136.040 Permitted commercial cannabis activity.

A. Subject to applicable State law and this chapter, commercial cannabis activity is permitted only when approved by the City in accordance with this chapter and any rules, regulations and standards promulgated by the City Manager.

B. The following commercial cannabis activity may be allowed pursuant to a permit:

1. Storefront Retailer.
2. (Reserved.)

C. There shall be no delivery of cannabis from any location within the City, except as required by state law.

4.136.050 Permit required.

To engage in commercial cannabis activity allowed by this chapter, a person must obtain an annual cannabis regulatory permit issued pursuant to this chapter and must operate their business in compliance with any rules, regulations and standards promulgated by the City Manager. The commercial cannabis business must also have:

- A. A valid City business license to conduct such business or activity; and
- B. A valid state license authorizing such business or activity in the City.

4.136.060 Limitations on number of commercial cannabis businesses.

A. Location of retailers. Retailers shall be permitted uses in the General Commercial (CG), and North End Commercial (CNE) districts pursuant to Section 10.16.020, subject to the further limitations of this chapter and any rules, regulations and standards promulgated by the City.

B. Limitation on number of retailers. The maximum number of retailers within the City shall be one (1). The method and manner by which the retailer shall be selected to operate in the City shall be established by resolution of the City Council.

4.136.070 Limitations on City's liability.

A. To the fullest extent permitted by law, the City does not assume any liability whatsoever, with respect to approving a permit pursuant to this Code or the operation of a cannabis business approved pursuant to this Code.

B. As a condition to issuance of a cannabis regulatory permit, the permittee shall execute an indemnification agreement, in a form approved by the City Attorney, that indemnifies the City from any and all claims, losses, damages, injuries, liabilities or losses which arise out of, or which are in any way related to, the City's issuance of the cannabis regulatory permit, the City's decision to approve the operation of the cannabis business or activity, the process used by the City in making its decision, or the alleged

violation of any federal, state or local laws by the cannabis business or any of its officers, employees or agents.

4.136.080 Location criteria.

A. Cannabis businesses may only be located in the zoning districts set forth in 4.136.060(A).

B. It is unlawful for any portion of the parcel on which a cannabis business is located to be within a 1,000-foot radius of a sensitive use or another cannabis business that is in existence at the time the fully-completed application for the permit is submitted to the City pursuant to this chapter. The distance specified in this subsection shall be measured by the horizontal distance measured in a straight line from the property line of where the cannabis business is to be located to the closest property line of the lot on which the sensitive use or another cannabis business is located without regard to intervening structures.

4.136.090 Promulgation of regulations, standards and other legal duties.

A. In addition to any regulations adopted by the City Council, the City Manager is authorized to establish administratively any additional rules, regulations and standards governing the issuance, denial or renewal of cannabis regulatory permits, the ongoing operation of cannabis businesses and the City's oversight, or concerning any other subject determined to be necessary to carry out the purposes of this chapter.

B. Regulations promulgated by the City Manager shall become effective upon date of publication. Cannabis businesses shall be required to comply with all state and local laws and regulations, including but not limited to any rules, regulations or standards adopted by the City Manager.

C. A cannabis business shall submit to the City and receive approval of an Operations Plan, with all information required pursuant to the rules, regulations and standards established by the City Council or City Manager.

4.136.100 Security measures.

A cannabis business shall comply with the security regulations required by the State of California for cannabis businesses by California Code of Regulations Title 4, Sections 15042 through 15047.2, as amended from time to time (State Security Requirements), which are attached hereto as Exhibit A and incorporated herein by this reference. The City Manager is authorized to establish administratively additional security rules, regulations and standards for cannabis businesses.

4.136.110 Employee background check required.

A. Pursuant to California Penal Sections 11105(b)(11) and 13300(b)(11), every person listed as an owner, manager, supervisor, employee, contract employee or

agent who otherwise works in a cannabis business must submit fingerprints and any other information deemed necessary by the Police Chief, or his or her designee, for a background check by the Police Chief.

B. Before the date of hire of any employee or within thirty (30) calendar days of issuance of a commercial cannabis business permit, whichever is later, the permittee shall identify each prospective employee and submit for each: the name, address, telephone number, title, primary responsibility(ies) and a valid government-issued form of identification, together with any other related information requested by the Police Chief for the purpose of conducting mandatory background checks.

C. No person shall be permitted to work at a cannabis business until they have first cleared a background check conducted through LiveScan. The LiveScan background check shall be conducted by a business in the City to the extent possible. Evidence that a prospective employee has been convicted of any the following offenses shall be grounds for denial of employment. Employers who wish to hire an individual despite such conviction shall appeal to the City Manager, who shall consult with the Police Chief, and at his or her sole discretion may issue a written waiver.

1. A violent or serious felony conviction, as specified in Penal Code Sections 667.5(c) or 1192.7(c);

2. A felony conviction involving fraud, deceit or embezzlement;

3. A felony conviction for hiring, employing, or using a minor in transporting, carrying, selling, giving away, preparing for sale or peddling, any controlled substance to a minor; or selling, offering to sell, furnishing, offering to furnish, administering or giving any controlled substance to a minor; or

4. A felony conviction for drug trafficking with enhancements pursuant to Health and Safety Code Sections 11370.4 or 11379.8.

D. Violation of this section shall be grounds for immediate suspension of the cannabis business permit.

4.136.120 Enforcement of permits.

A. In addition to other remedies set forth in this Code, violations of this chapter may be prosecuted as infractions or misdemeanors at the City Attorney's discretion and may be abated as public nuisances. The remedies provided in this chapter are cumulative and are in addition to any other criminal or civil remedies. Violations of this chapter include: (i) violation of the provisions of this chapter; (ii) violation of any rules, regulations and standards promulgated by the City Council or City Manager; and (iii) violation of the terms and conditions of a permit, indemnification agreement, operations plan, and, if required, development agreement.

B. Revocation of a license issued by the California Department of Cannabis Control, shall result in the revocation of the cannabis regulatory permit and immediately suspend the ability of a cannabis business to operate within the City. ”

SECTION 4. Section 10.16.020 is amended to allow commercial cannabis activity as a permitted use in the General Commercial (CG) and North End Commercial (CNE) districts. Corresponding changes shall be made to the Manhattan Beach Local Coastal Program to permit such uses in the General Commercial (CG) and North End Commercial (CNE) districts within the City’s coastal zone.

SECTION 5. A new Chapter 8.38 (Cannabis Business Tax) is hereby added to Title 8 (Finance, Revenue and Taxation) of the Manhattan Beach Municipal Code to read as follows:

“Chapter 8.38 Cannabis Business Tax

8.38.010 Title.

This chapter is designated and shall be known as the cannabis business tax ordinance.

8.38.020 Authority.

The purpose of this chapter is to establish a tax, for revenue purposes, pursuant to Sections 37101 and 37100.5 of the California Government Code, upon cannabis businesses that engage in business in the City. The cannabis business tax is levied based upon business gross receipts and square footage of canopy space. It is not a sales and use tax, a tax upon income, or a tax upon real property.

8.38.030 Purpose.

The cannabis business tax is a general tax enacted solely for unrestricted general revenue purposes, and not for specific purposes. All of the proceeds from the tax imposed by this chapter shall be placed in the City’s general fund and be available for any legal municipal purpose.

8.38.040 Intent.

The intent of this chapter is to levy a tax on all cannabis businesses that operate in the City, regardless of whether such business would have been legally operating at the time the cannabis business tax was adopted. Nothing in this chapter shall be interpreted to authorize or permit any business activity that would not otherwise be legal or permissible under laws applicable to the activity at the time the activity is undertaken, including, but not limited to, the conduct or continuance of any illegal business or of a legal business in an illegal manner.

8.38.050 Definitions.

DRAFT

The following words and phrases shall have the meanings set forth below when used in this Cannabis Business Tax chapter:

A. “Business” shall include all activities engaged in or caused to be engaged in within the City, including any commercial or industrial enterprise, trade, profession, occupation, vocation, calling, or livelihood, whether or not carried on for gain or profit, but shall not include the services rendered by an employee to his or her employer.

B. “Cannabis” means all parts of the plant *Cannabis sativa* Linnaeus, *Cannabis indica*, or *Cannabis ruderalis*, whether growing or not; the seeds thereof; the resin, whether crude or purified, extracted from any part of the plant; and every compound, manufacture, salt, derivative, mixture, or preparation of the plant, its seeds, or resin. “Cannabis” also means the separated resin, whether crude or purified, obtained from cannabis. “Cannabis” does not include the mature stalks of the plant, fiber produced from the stalks, oil or cake made from the seeds of the plant, any other compound, manufacture, salt, derivative, mixture, or preparation of the mature stalks (except the resin extracted therefrom), fiber, oil, or cake, or the sterilized seed of the plant that is incapable of germination. For the purpose of this chapter, “cannabis” does not include “industrial hemp” as defined by California Health and Safety Code Section 11018.5, as the same may be amended from time to time.

C. “Cannabis business” means a retailer, microbusiness, cultivation facility, distribution facility, manufacturing facility, or a testing laboratory. “Cannabis business” also means any business activity involving cannabis, including, but not limited to, cultivating, transporting, distributing, manufacturing, compounding, converting, processing, preparing, storing, packaging, delivering, testing, dispensing, retailing and wholesaling of cannabis, of cannabis products or of ancillary products and accessories, whether or not carried on for gain or profit.

D. “Cannabis business tax” or “business tax” means the tax due pursuant to this chapter for engaging in cannabis business in the City.

E. “Cannabis cultivation” means cultivation in the course of conducting a cannabis business.

F. “Cannabis product” means cannabis that has undergone a process whereby the plant material has been transferred into a concentrate including, but not limited to, concentrated cannabis, or an edible or topical product containing cannabis or concentrated cannabis or other ingredient.

G. “Canopy space” means all areas occupied by any portion of a cannabis plant whether contiguous or noncontiguous on any one site. When cannabis plants occupy multiple horizontal planes (as when plants are placed on shelving above other plants) each plane shall be counted as a separate canopy area.

H. "Cultivation" means any activity involving the planting, growing, harvesting, drying, curing, grading, or trimming of cannabis.

I. "Cultivation facility" means a location where cannabis is planted, grown, harvested, dried, cured, graded, or trimmed, or a location where any combination of those activities occurs.

J. "Distribution" means the procurement, sale and transport of cannabis and cannabis products between retailers, cultivation facilities, manufacturing facilities, and testing laboratories.

K. "Distribution facility" means a business that transports cannabis goods between retailers, cultivation facilities, manufacturing facilities, and testing laboratories, arranges for testing of cannabis goods, and conducts quality assurance review of cannabis goods to ensure compliance with all packaging and labeling requirements.

L. "Employee" means each and every person engaged in the operation or conduct of any business, whether as an owner, member of the owner's family, partner, associate, agent, manager or solicitor, and each and every other person employed or working in such business for a wage, salary, commission, barter or any other form of compensation.

M. "Engaged in business as a cannabis business" means the commencing, conducting, operating, managing or carrying on of a cannabis business, whether done as an owner, or by means of an officer, agent, manager, employee, or otherwise, whether operating from a fixed location in the City or coming into the City from an outside location to engage in such activities. A person shall be deemed engaged in business within the City if:

1. Such person or person's employee maintains a fixed place of business within the City for the benefit or partial benefit of such person;

2. Such person or person's employee owns or leases real property within the City for business purposes;

3. Such person or person's employee regularly maintains a stock of tangible personal property in the City for sale in the ordinary course of business;

4. Such person or person's employee regularly conducts solicitation of business within the City; or

5. Such person or person's employee performs work or renders services in the City.

The foregoing specified activities shall not be a limitation on the meaning of "engaged in business as a cannabis business."

DRAFT

N. "Evidence of doing business" means evidence such as, without limitation, use of signs, circulars, cards or any other advertising media, including the use of internet or telephone solicitation, or representation to a government agency or to the public that such person is engaged in a cannabis business in the City.

O. "Fiscal year" means July 1 through June 30 of the following calendar year.

P. "Gross receipts," except as otherwise specifically provided, means, whether designated a sales price, royalty, rent, commission, dividend, or other designation, the total amount (including all receipts, cash, credits and property of any kind or nature) received or payable for sales of goods, wares or merchandise or for the performance of any act or service of any nature for which a charge is made or credit allowed (whether such service, act or employment is done as part of or in connection with the sale of goods, wares, merchandise or not), without any deduction therefrom on account of the cost of the property sold, the cost of materials used, labor or service costs, interest paid or payable, losses or any other expense whatsoever. However, the following shall be excluded from gross receipts:

1. Cash discounts where allowed and taken on sales;
2. Any tax required by law to be included in, or added to, the purchase price and collected from the consumer or purchaser;
3. Such part of the sale price of any property returned by purchasers to the seller as refunded by the seller by way of cash or credit allowances or return of refundable deposits previously included in gross receipts;
4. Receipts derived from the occasional sale of used, obsolete or surplus trade fixtures, machinery or other equipment used by the taxpayer in the regular course of the taxpayer's business;
5. Cash value of sales, trades or transactions between departments or units of the same business;
6. Whenever there are included within the gross receipts amounts that reflect sales for which credit is extended and such amount proved uncollectible in a subsequent year, those amounts may be excluded from the gross receipts in the year they prove to be uncollectible; provided, however, if the whole or portion of such amounts excluded as uncollectible are subsequently collected they shall be included in the amount of gross receipts for the period when they are recovered;
7. Receipts of refundable deposits, except that such deposits when forfeited and taken into income of the business shall not be excluded when in excess of one dollar (\$1);
8. Amounts collected for others where the business is acting as an agent or trustee and to the extent that such amounts are paid to those for whom collected. These agents or trustees must provide the finance department with the

names and the addresses of the others and the amounts paid to them. This exclusion shall not apply to any fees, percentages, or other payments retained by the agent or trustees; and

9. Retail sales of t-shirts, sweaters, hats, stickers, key chains, bags, books, posters or other personal tangible property that the Tax Administrator has excluded in writing by issuing an administrative ruling per Section 8.38.150 shall not be subject to the cannabis business tax under this chapter. However, any retail sales not subject to this chapter as a result of the administrative ruling shall be subject to the appropriate business tax under Chapter 3.40 or any other chapter or title as determined by the Tax Administrator.

Q. “Manufacturing” means all aspects of the extraction process, infusion process, and packaging and labeling processes, including processing, preparing, holding, and storing of cannabis products. Manufacturing also includes any processing, preparing, holding, or storing of components and ingredients.

R. “Microbusiness” means a business that engages in the cultivation of cannabis on an area less than ten thousand (10,000) square feet and acts as a licensed distribution facility, and Level 1 manufacturer (State license Type 6). A microbusiness shall not be permitted to act as a retailer.

S. “Permit” means a cannabis regulatory permit issued by the City to a person to authorize that person to operate or engage in a cannabis business pursuant to Chapter 4.136 of this Code.

T. “Person” means an individual, firm, partnership, joint venture, association, corporation, limited liability company, estate, trust, business trust, receiver, syndicate, or any other group or combination acting as a unit, whether organized as a nonprofit or for-profit entity, and includes the plural as well as the singular number.

U. “Retailer” means a cannabis business that engages in the retail sale or delivery of cannabis and cannabis products to customers.

V. “Sale” means and includes any sale, exchange, or barter.

W. “State” means the State of California.

X. “State license” means a license issued by the California Department of Cannabis Control or any other State licensing authority for cannabis businesses.

Y. “Tax Administrator” means the Manhattan Beach City Manager, or his or her designee(s).

Z. “Testing laboratory” means a means a laboratory, facility, or entity in the City that offers or performs tests of cannabis or cannabis products and that is both of the following:

1. Accredited by an accrediting body that is independent from all other persons involved in commercial cannabis activity in the state; and
2. Licensed by the California Department of Cannabis Control.

8.38.060 Tax imposed and modifications to tax.

A. There is imposed upon each person who is engaged in business as a cannabis business a cannabis business tax regardless if the business has been issued a permit to operate lawfully in the City or is operating unlawfully.

B. The rate of the cannabis business tax shall be as follows:

1. For every person who is engaged in cannabis cultivation in the City: ten dollars (\$10) per square foot of canopy space. For purposes of this subsection (B)(1), the square feet of canopy space shall be rebuttably presumed to be the maximum square footage of the area allowed by the cannabis regulatory permit for cannabis cultivation. Should a cannabis regulatory permit be issued to a business that cultivates only for certain months of the year, the City shall prorate the tax as to sufficiently reflect the period in which cultivation is occurring at the business. In no case shall square footage that is authorized by the cannabis regulatory permit but not utilized for cultivation be deducted for the purpose of determining the tax for cultivation, unless the Tax Administrator is informed in writing and authorizes such reduction for the purpose of relief from the tax prior to the period for which the space will not be used, that such space will not be used. For every person who engages in the operation of a testing laboratory: one (1) percent of gross receipts.

2. For every person who engages in the retail sales of cannabis: fifteen (15) to twenty (20) percent of gross receipts. The City Council may, at any time by ordinance, modify the cannabis business tax rate for retail sales of cannabis within the permissible range of fifteen (15) percent and twenty (20) percent.

3. For every person who engages in cannabis distribution: two (2) percent of gross receipts.

4. For every person who engages in cannabis manufacturing, processing, or any other type of cannabis business not described in subsection (B)(1), (2), (3) or (4): two and a half (2.5) percent of gross receipts.

5. Microbusinesses shall have a tax imposed on each aspect of their business. For example, a microbusiness shall be charged two and a half (2.5) percent of gross receipts for the manufacturing component of the business, two (2) percent of gross receipts for the distribution component of the business, and ten dollars (\$10) per square feet of canopy space, unless the aspects of the business are so merged that a separate tax rate cannot be determined, in which case they will be charged the higher rate. The business must be able to demonstrate by reasonable and verifiable standards, the portions of activities tied to each aspect of the business, through its books and records kept in the regular course of business, and in accordance with generally

accepted accounting principles, and not specifically created and maintained for tax purposes, in order to be charged the lower tax rate.

8.38.070 Reporting and remittance of tax.

A. The cannabis business tax imposed by this chapter shall be paid, in arrears, on a quarterly basis. For cannabis cultivation, the tax due for each calendar quarter shall be based on the square footage of the cultivation facility's canopy space during the quarter and the rate shall be twenty-five (25) percent of the applicable annual rate. For all other cannabis businesses activities, the tax due for each calendar quarter shall be based on the gross receipts for the quarter.

B. Each person owing cannabis business tax for a calendar quarter shall, no later than the last day of the month following the close of the calendar quarter, file with the Tax Administrator a statement of the tax owed for that calendar quarter and the basis for calculating that tax. The Tax Administrator may require that the statement be submitted on a form prescribed by the Tax Administrator. The tax for each calendar quarter shall be due and payable on that same date as the statement for the calendar quarter is due.

C. Upon cessation of a cannabis business, tax statements and payments shall be immediately due for all calendar quarters up to the calendar quarter during which cessation occurred.

D. The Tax Administrator may, at his or her discretion, establish shorter report and payment periods for any taxpayer as the Tax Administrator deems necessary to ensure collection of the tax. The Tax Administrator may also require that a deposit, to be applied against the taxes for a calendar quarter, be made by a taxpayer at the beginning of that calendar quarter. In no event shall the deposit required by the Tax Administrator exceed the tax amount he or she projects will be owed by the taxpayer for the calendar quarter. The Tax Administrator may require that a taxpayer make payments via a cashier's check, money order, wire transfer, or similar instrument.

8.38.080 Payments and communications—Timely remittance.

Whenever any payment, statement, report, request or other communication is due, it must be received by the Tax Administrator on or before the final due date. A postmark will not be accepted as timely remittance. If the due date would fall on a Saturday, Sunday or a holiday, the due date shall be the next regular business day on which the City is open to the public.

8.38.090 Payment—When taxes deemed delinquent.

Unless otherwise specifically provided under other provisions of this chapter, the taxes required to be paid pursuant to this chapter shall be deemed delinquent if not received by the Tax Administrator on or before the due date as specified in Sections 8.38.070 and 8.38.080.

8.38.100 Notice not required by the City.

The Tax Administrator may as a courtesy send a tax notice to the business. However, the Tax Administrator is not required to send a delinquency or other notice or bill to any person subject to the provisions of this chapter. Failure to send such notice or bill shall not affect the validity of any tax or penalty due under the provisions of this chapter.

8.38.110 Penalties and interest.

A. Any person who fails or refuses to pay any cannabis business tax required to be paid pursuant to this chapter on or before the due date shall pay penalties and interest as follows:

1. A penalty equal to ten (10) percent of the amount of the tax, in addition to the amount of the tax, plus interest on the unpaid tax calculated from the due date of the tax at the rate of one (1) percent per month.

2. If the tax remains unpaid for a period exceeding one (1) calendar month beyond the due date, an additional penalty equal to twenty-five (25) percent of the amount of the tax, plus interest at the rate of one (1) percent per month on the unpaid tax and on the unpaid penalties.

3. Interest shall be applied at the rate of one (1) percent per month on the first day of the month for the full month, and will continue to accrue monthly on the tax and penalty until the balance is paid in full.

B. Whenever a check or electronic payment is submitted in payment of a cannabis business tax and the payment is subsequently returned unpaid by the bank for any reason, the taxpayer will be liable for the tax amount due plus any fees, penalties and interest as provided for in this section, and any other amount allowed under state law.

8.38.120 Refunds and credits.

A. No refund shall be made of any tax collected pursuant to this chapter, except as provided in Section 8.38.130.

B. No refund of any tax collected pursuant to this chapter shall be made because of the discontinuation, dissolution or other termination of a business.

8.38.130 Refunds and procedures.

A. Whenever the amount of any cannabis business tax, penalty or interest has been overpaid, paid more than once, or has been erroneously collected or received by the City under this chapter, it may be refunded to the claimant who paid the tax

provided that a written claim for refund is filed with the Tax Administrator within one (1) year of the date the tax was originally due and payable.

B. The Tax Administrator, his or her designee, or any other City officer charged with the administration of this chapter, shall have the right to examine and audit all the books and business records of the claimant in order to determine the eligibility of the claimant to the claimed refund. No claim for refund shall be allowed if the claimant refuses to allow such examination of claimant's books and business records after request by the Tax Administrator to do so.

8.38.140 Personal cultivation not taxed.

The provisions of this chapter shall not apply to personal cannabis cultivation, as defined in the Medicinal and Adult Use Cannabis Regulation and Safety Act. This chapter shall not apply to personal use of cannabis that is specifically exempted from state licensing requirements, that meets the definition of personal use or equivalent terminology under state law, and for which the individual receives no compensation whatsoever related to that personal use.

8.38.150 Administration of the tax.

A. It shall be the duty of the Tax Administrator to collect the taxes, penalties, fees, and perform the duties required by this chapter.

B. For purposes of administration and enforcement of this chapter generally, the Tax Administrator may from time to time promulgate such administrative interpretations, rules, and procedures consistent with the purpose, intent, and express terms of this chapter as he or she deems necessary to implement or clarify such provisions or aid in enforcement.

C. The Tax Administrator may take such administrative actions as needed to administer the tax, including, but not limited to:

1. Provide to all cannabis business taxpayers forms for the reporting of the tax;
 2. Provide information to any taxpayer concerning the provisions of this chapter;
 3. Receive and record all taxes remitted to the City as provided in this chapter;
 4. Maintain records of taxpayer reports and taxes collected pursuant to this chapter;
 5. Assess penalties and interest to taxpayers pursuant to this chapter;
- and

6. Determine amounts owed and enforce collection pursuant to this chapter.

8.38.160 Appeals procedure.

Any taxpayer aggrieved by any decision of the Tax Administrator with respect to the amount of tax, interest, penalties and fees, if any, due under this chapter may appeal to the City Manager by filing a notice of appeal with the City Clerk within thirty (30) days of the serving or mailing of the determination of tax due. The City Clerk, or his or her designee, shall fix a time and place for hearing such appeal, and the City Clerk, or his or her designee, shall give notice in writing to such operator at the last known place of address. The finding of the City Manager shall be final and conclusive and shall be served upon the appellant in the manner prescribed by this chapter for service of notice of hearing. Any amount found to be due shall be immediately due and payable upon the service of the notice.

8.38.170 Enforcement—Action to collect.

Any taxes, penalties and/or fees required to be paid under the provisions of this chapter shall be deemed a debt owed to the City. Any person owing money to the City under the provisions of this chapter shall be liable in an action brought in the name of the City for the recovery of such debt. The provisions of this section shall not be deemed a limitation upon the right of the City to bring any other action including criminal, civil and equitable actions, based upon the failure to pay the tax, penalties and/or fees imposed by this chapter or the failure to comply with any of the provisions of this chapter.

8.38.180 Apportionment.

If a business subject to the tax is operating both within and outside the City, it is the intent of the City to apply the cannabis business tax so that the measure of the tax fairly reflects the proportion of the taxed activity actually carried on in the City. To the extent federal or state law requires that any tax due from any taxpayer be apportioned, the taxpayer may indicate said apportionment on his or her tax return. The Tax Administrator may promulgate administrative procedures for apportionment as he or she finds useful or necessary.

8.38.190 Constitutionality and legality.

This tax is intended to be applied in a manner consistent with the United States and California Constitutions and state law. None of the tax provided for by this chapter shall be applied in a manner that causes an undue burden upon interstate commerce, a violation of the equal protection or due process clauses of the United States or California Constitutions or a violation of any other provision of the California Constitution or state law. If a person believes that the tax, as applied to him or her, is impermissible under applicable law, he or she may request that the Tax Administrator release him or her from the obligation to pay the impermissible portion of the tax.

8.38.200 Audit and examination of premises and records.

A. For the purpose of ascertaining the amount of cannabis business tax owed or verifying any representations made by any taxpayer to the City in support of his or her tax calculation, the Tax Administrator shall have the power to inspect any location where a cannabis business is operating in the City and to audit and examine all books and records (including, but not limited to, bookkeeping records, state and federal income tax returns, and other records relating to the gross receipts of the business) of persons engaged in cannabis businesses. In conducting such investigation, the Tax Administrator shall have the power to inspect any equipment, such as computers or point of sale machines, that may contain such records.

B. It shall be the duty of every person liable for the collection and payment to the City of any tax imposed by this chapter to keep and preserve, for a period of at least three (3) years, all records as may be necessary to determine the amount of such tax as he or she may have been liable for the collection of and payment to the City, which records the Tax Administrator or his or her designee shall have the right to inspect at all reasonable times.

C. The cannabis business shall pay the actual costs of City's audit each year. The cannabis business shall deposit five thousand dollars (\$5,000) by January 15 of each calendar year to pay for the cost of the yearly audit. If the cost of the audit exceeds five thousand dollars (\$5,000), the cannabis business shall be responsible for paying any amount in excess of the deposit. If the cost of the audit is less than five thousand dollars (\$5,000), the cannabis business shall be refunded the difference.

8.38.210 Other licenses, permits, taxes, fees or charges.

A. Nothing contained in this chapter shall be deemed to repeal, amend, be in lieu of, replace or in any way affect any requirements for any permit or license required by, under or by virtue of any provision of any other chapter of this Code or any other ordinance or resolution of the City, nor be deemed to repeal, amend, be in lieu of, replace or in any way affect any tax, fee or other charge imposed, assessed or required by, under or by virtue of any other chapter of this Code or any other ordinance or resolution of the City. Any references made or contained in any other chapter of this Code to any licenses, license taxes, fees, or charges, or to any schedule of license fees, shall be deemed to refer to the licenses, license taxes, fees or charges, or schedule of license fees, provided for in other chapters of this Code.

B. The Tax Administrator may revoke or refuse to renew the cannabis regulatory permit required by Chapter 4.136 of this Code or the business registration required by Title 6 of this Code for any business that is delinquent in the payment of any tax due pursuant to this chapter or that fails to make a deposit required by the Tax Administrator pursuant to Section 8.38.070.

8.38.220 Payment of tax does not authorize unlawful business.

A. The payment of a cannabis business tax required by this chapter and/or its acceptance by the City shall not entitle any person to carry on any cannabis business unless the person has complied with all of the requirements of applicable laws.

B. No tax paid under the provisions of this chapter shall be construed as authorizing the conduct or continuance of any illegal or unlawful business and/or any business in violation of applicable laws.

8.38.230 Deficiency determination.

If the Tax Administrator is not satisfied that any statement filed as required under the provisions of this chapter is correct, or that the amount of tax is correctly computed, he or she may compute and determine the amount to be paid and make a deficiency determination upon the basis of the facts contained in the statement or upon the basis of any information in his or her possession or that may come into his or her possession within three (3) years of the date the tax was originally due and payable. One or more deficiency determinations of the amount of tax due for a period or periods may be made. When a person discontinues engaging in a business, a deficiency determination may be made at any time within three (3) years thereafter as to any liability arising from engaging in such business whether or not a deficiency determination is issued prior to the date the tax would otherwise be due. Whenever a deficiency determination is made, a notice shall be given to the person concerned in the same manner as notices of assessment are given under Section 8.38.250.

8.38.240 Failure to report—Nonpayment, fraud.

A. Under any of the following circumstances, the Tax Administrator may make and give notice of an assessment of the amount of tax owed by a person under this chapter at any time:

1. If the person has not filed a complete statement required under the provisions of this chapter;
2. If the person has not paid the tax due under the provisions of this chapter;
3. If the person has not, after demand by the Tax Administrator, filed a corrected statement, or furnished to the Tax Administrator adequate substantiation of the information contained in a statement already filed, or paid any additional amount of tax due under the provisions of this chapter; or
4. If the Tax Administrator determines that the nonpayment of any business tax due under this chapter is due to fraud, a penalty of twenty-five (25) percent of the amount of the tax shall be added thereto in addition to penalties and interest otherwise stated in this chapter and any other penalties allowed by law.

B. The notice of assessment shall separately set forth the amount of any tax known by the Tax Administrator to be due or estimated by the Tax Administrator, after consideration of all information within the Tax Administrator's knowledge concerning the business and activities of the person assessed, to be due under each applicable section of this chapter, and shall include the amount of any penalties or interest accrued on each amount to the date of the notice of assessment.

8.38.250 Tax assessment—Notice requirements.

The notice of assessment shall be served upon the person either by personal delivery, or by a deposit of the notice in the United States mail, postage prepaid thereon, addressed to the person at the address of the location of the business or to such other address as he or she shall register with the Tax Administrator for the purpose of receiving notices provided under this chapter; or, should the person have no address registered with the Tax Administrator for such purpose, then to such person's last known address. For the purposes of this section, a service by mail is complete at the time of deposit in the United States mail.

8.38.260 Tax assessment—Hearing, application and determination.

Within thirty (30) days after the date of service, the person may apply in writing to the Tax Administrator for a hearing on the assessment. If application for a hearing before the City is not made within the time herein prescribed, the tax assessed by the Tax Administrator shall become final and conclusive. Within thirty (30) days of the receipt of any such application for hearing, the Tax Administrator shall cause the matter to be set for hearing before him or her no later than thirty (30) days after the receipt of the application, unless a later date is agreed to by the Tax Administrator and the person requesting the hearing. Notice of such hearing shall be given by the Tax Administrator to the person requesting such hearing not later than five (5) days prior to such hearing. At such hearing said applicant may appear and offer evidence why the assessment as made by the Tax Administrator should not be confirmed and fixed as the tax due. After such hearing the Tax Administrator shall determine and reassess the proper tax to be charged and shall give written notice to the person in the manner prescribed in Section 8.38.250 for giving notice of assessment.

8.38.270 Conviction for violation—Taxes not waived.

The conviction and punishment of any person for failure to pay the required tax shall not excuse or exempt such person from any civil action for the tax debt unpaid at the time of such conviction. No civil action shall prevent a criminal prosecution for any violation of the provisions of this chapter or of any state law requiring the payment of all taxes.

8.38.280 Violation deemed a misdemeanor.

Any person violating any of the provisions of this chapter is deemed guilty of a misdemeanor.

8.38.290 Severability.

If any provision of this chapter, or its application to any person or circumstance, is determined by a court of competent jurisdiction to be unlawful, unenforceable or otherwise void, that determination shall have no effect on any other provision of this chapter or the application of this chapter to any other person or circumstance and, to that end, the provisions hereof are severable.

8.38.300 Remedies cumulative.

All remedies and penalties prescribed by this chapter or which are available under any other provision of the Manhattan Beach Municipal Code and any other provision of law or equity are cumulative. The use of one or more remedies by the City shall not bar the use of any other remedy for the purpose of enforcing the provisions of this chapter.”

SECTION 6. Severability. If any section, subsection, subdivision, sentence, clause, phrase, or portion of this Ordinance for any reason is held to be invalid or unconstitutional by the decision of any court of competent jurisdiction, such decision shall not affect the validity of the remaining portions of this Ordinance. The voters hereby declare that they would have adopted this Ordinance, and each section, subsection, subdivision, sentence, clause, phrase, or portion thereof, irrespective of the fact that any one or more sections, subsections, subdivisions, sentences, clauses, phrases, or portions thereof be declared invalid or unconstitutional.

SECTION 7. Neither the adoption of this Ordinance nor the repeal of any other Ordinance of this City shall in any manner affect the prosecution for violations of ordinances, which violations were committed prior to the effective date hereof, nor be construed as a waiver of any penalty or the penal provisions applicable to any violation thereof.

SECTION 8. Subsequent Amendment. Notwithstanding California Elections Code Section 9217, the City Council may amend, but not repeal, any provision of this Ordinance by majority vote, with the exception of:

- A. Any reduction of the cannabis business tax for retailers below fifteen (15) percent of gross receipts;
- B. Any increase of the cannabis business tax for retailers above twenty (20) percent of gross receipts;
- C. The number of permitted retailers; and
- D. Any amendment required by state or federal law.

SECTION 9. Effective Date. Pursuant to Elections Code Section 9217, the Measure shall be in full force and effect upon the tenth day following certification by the City Council of the election returns indicating passage of the Measure by a majority of the voters casting votes on the Measure..

SECTION 10. Certification. The City Clerk shall certify to the passage and adoption of this Ordinance and shall cause this Ordinance to be published in accordance with the law.

SECTION 11. Notification. The City Attorney shall send a copy of this Ordinance to the Bureau of Cannabis Control immediately following its effective date.

SECTION 12. CEQA Exemption. The City Council's action to place this Ordinance on the ballot and the voters' adoption of this Ordinance are exempt from the California Environmental Quality Act ("CEQA") pursuant to CEQA Guidelines Section 15061(b)(3) because it can be seen with certainty that there is no possibility that the ordinances will have a significant effect on the environment. Furthermore, this Ordinance is not subject to the CEQA pursuant to the CEQA Guidelines Section 15060(c)(3), because it is not a project as defined by the CEQA Guidelines Section 15378. Adoption of the Ordinance does not have the potential for resulting in either a direct physical change in the environment or a reasonably foreseeable indirect physical change in the environment. Further projects subject to the Ordinance will require a discretionary permit and CEQA review, and will be analyzed at the appropriate time in accordance with CEQA. These actions are therefore exempt from the environmental review requirements of CEQA pursuant to Section 15308 of Title 14 of the California Code of Regulations. A Notice of Exemption shall be filed with the County Clerk of the County of Los Angeles in accordance with CEQA Guidelines.

SECTION 13. The City Clerk is hereby directed to insert the letters of the conflicting measures into the appropriate places in this Ordinance upon receiving the letter designations for such measures from Los Angeles County.

ADOPTED by the voters at the General Municipal Election held November 8, 2022 by the following vote:

Mayor

ATTEST:

Liza Tamura, City Clerk

EXHIBIT A

STATE SECURITY REQUIREMENTS – CALIFORNIA CODE OF REGULATIONS
TITLE 4, SECTIONS 15042 THROUGH 15047.2

§ 15042. Premises Access Requirements.

- (a) For a premises that is not open to the public, the licensee shall establish and implement an identification and sign-in/sign-out procedure for all persons accessing the premises, including authorized individuals, suppliers, and visitors.
- (b) Licensees shall ensure that only employees of the licensee and other authorized individuals access the limited-access areas of the licensed premises.
- (c) For the purpose of this section, authorized individuals include outside vendors, contractors, or other individuals conducting business that requires access to the limited-access areas.
- (d) An individual who enters the limited-access area and is not employed by the licensee shall be escorted by an employee of the licensee at all times while within the limited-access area.
- (e) A licensee shall maintain a record of all authorized individuals who are not employees of the licensee who enter the limited-access areas. The record shall include the name of the individual, the company the individual works for, the reason the individual entered the limited-access area, the date, and the times the individual entered and exited the limited-access area. These records shall be made available to the Department immediately upon request.
- (f) A licensee shall not receive consideration or compensation for permitting an individual to enter the limited-access areas.

§ 15042.1. Security Plan for Licensed Manufacturers.

A licensed manufacturer shall develop and implement a written security plan. At a minimum, the security plan shall include a description of the security measures to:

- (a) Prevent access to the manufacturing premises by unauthorized persons and protect the physical safety of employees. This includes, but is not limited to:
 - (1) Establishing physical barriers to secure perimeter access and all points of entry into a manufacturing premises (such as locking primary entrances with commercial-grade, non-residential door locks, providing fencing around the grounds and driveway, and securing any secondary entrances including windows, roofs, and ventilation systems);
 - (2) Installing a security alarm system to notify and record incident(s) where physical barriers have been breached;
 - (3) Establishing an identification and sign-in/sign-out procedure for authorized personnel, individuals, suppliers, and visitors;
 - (4) Maintaining the premises such that visibility and security monitoring of the premises is possible; and
 - (5) Establishing procedures for the investigation of suspicious activities.
- (b) Deterring theft or loss of cannabis and cannabis products. This includes, but is not limited to:

- (1) Establishing an inventory system to track cannabis and cannabis products and the personnel responsible for processing it throughout the manufacturing process;
 - (2) Limiting access of personnel within the premises to those areas necessary to complete job duties, and to those timeframes specifically scheduled for completion of job duties, including access by outside vendors, suppliers, contractors or other individuals conducting business with the licensee that requires access to the premises;
 - (3) Supervising tasks or processes with high potential for diversion, including the loading and unloading of cannabis and cannabis products from transportation vehicles; and
 - (4) Providing areas in which personnel may store and access personal items that are separate from the manufacturing areas.
- (c) Securing and backing up electronic records in a manner that prevents unauthorized access and ensures that the integrity of the records is maintained.

§ 15043. Licensee Employee Badge Requirement.

All agents, officers, or other persons acting for or employed by a licensee conducting retail sales or participating in a temporary cannabis event shall display a laminated or plastic-coated identification badge issued by the licensee at all times while engaging in commercial cannabis activity. The identification badge shall, at a minimum, include the licensee's "doing business as" name and license number, the employee's first name, an employee number exclusively assigned to that employee for identification purposes, and a color photograph of the employee that clearly shows the full front of the employee's face and that is at least 1 inch in width and 1.5 inches in height.

§ 15044. Video Surveillance System.

- (a) Each licensed premises shall have a digital video surveillance system with a minimum camera resolution of 1280 x 720 pixels on the licensed premises. This requirement does not apply to a licensed premises authorized exclusively for cultivation activities or the cultivation area of a licensed microbusiness premises.
- (b) The video surveillance system shall at all times be able to effectively and clearly record images of the area under surveillance.
- (c) Each camera shall be permanently mounted and in a fixed location. Each camera shall be placed in a location that allows the camera to clearly record activity occurring within 20 feet of all points of entry and exit on the licensed premises, and allows for the clear and certain identification of any person and activities in all areas required to be filmed under subsection (d) of this section.
- (d) Areas that shall be recorded on the video surveillance system include the following:
 - (1) Areas where cannabis or cannabis products are weighed, packed, stored, loaded, and unloaded for transportation, prepared, or moved within the licensed premises;
 - (2) Limited-access areas;
 - (3) Security rooms;
 - (4) Areas storing a surveillance-system storage device with at least one camera recording the access points to the secured surveillance recording area; and

- (5) Entrances and exits to the licensed premises, which shall be recorded from both indoor and outdoor vantage points.
- (e) Licensed retailers and licensed microbusinesses authorized to engage in retail sales shall also record point-of-sale areas and areas where cannabis goods are displayed for sale on the video surveillance system. At each point-of-sale location, camera placement must allow for the recording of the facial features of any person purchasing or selling cannabis goods, or any person in the retail area, with sufficient clarity to determine identity.
- (f) Cameras shall record continuously 24 hours per day and at a minimum of 15 frames per second (FPS).
- (g) The physical media or storage device on which surveillance recordings are stored shall be secured in a manner to protect the recording from tampering or theft.
- (h) Surveillance recordings shall be kept for a minimum of 90 calendar days.
- (i) Surveillance recordings are subject to inspection by the Department and shall be kept in a manner that allows the Department to view and obtain copies of the recordings at the licensed premises immediately upon request. The licensee shall also send or otherwise provide copies of the recordings to the Department upon request within the time specified by the Department.
- (j) Recorded images shall clearly and accurately display the time and date. Time is to be measured in accordance with the standards issued by the United States National Institute of Standards and Technology. The displayed date and time shall not significantly obstruct the view of recorded images.
- (k) The video surveillance system shall be equipped with a failure notification system that provides notification to the licensee of any interruption or failure of the video surveillance system or video surveillance-system storage device.
- (l) If multiple licensed premises are contained within the same building, a single video surveillance system covering the entire building may be used by all of the licensees under the following conditions:
- (1) All licensees shall have immediate access to the surveillance recordings to produce them pursuant to subsection (i).
 - (2) All licensees shall be held responsible and subject to discipline for any violations of the video surveillance requirements.
- (m) Notwithstanding subsection (a), a licensed distributor transport only licensee engaged in self-distribution whose premises is on the same parcel of land as their licensed cultivation premises shall not be required to comply with the provisions of this section.

§ 15045. Security Personnel.

- (a) A licensed retailer or licensed microbusiness authorized to engage in retail sales shall hire or contract for security personnel who are at least 21 years of age to provide onsite security services for the licensed retail premises during the hours of operation. All security personnel hired or contracted for by the licensee shall be licensed by the Bureau of Security and Investigative Services and shall comply with chapters 11.4 and 11.5 of division 3 of the Business and Professions Code.

(b) Notwithstanding subsection (a), a licensed non-storefront retailer or licensed microbusiness who is not engaged in storefront retail sale is not required to hire or contract for security personnel.

(c) If multiple licensed premises are contained within the same building, security personnel may be shared by all of the licensees to cover the entire building. However, all licensees shall be held responsible and subject to discipline for any violations of the security personnel requirements.

§ 15046. Locks.

A licensee shall ensure that all limited-access areas can be securely locked using commercial-grade, nonresidential door locks. A licensee shall also use commercial-grade, nonresidential door locks on all points of entry and exit to the licensed premises. This requirement does not apply to a licensed premises authorized exclusively for cultivation activities or the cultivation area of a licensed microbusiness premises.

§ 15047. Alarm System.

(a) A licensee shall maintain an alarm system as defined in Business and Professions Code section 7590.1(c) at the licensed premises. This requirement does not apply to a licensed premises authorized exclusively for cultivation activities or the cultivation area of a licensed microbusiness premises.

(b) A licensee shall ensure a licensed alarm company operator or one or more of its registered alarm agents installs, maintains, monitors, and responds to the alarm system.

(c) Upon request, a licensee shall make available to the Department all information related to the alarm system, monitoring, and alarm activity.

(d) If multiple licensed premises are contained within the same building, a single alarm system covering the entire building may be used by all of the licensees under the following conditions:

(1) All licensees shall have access to and be able to provide the information under subsection (c).

(2) All licensees shall be held responsible and subject to discipline for any violations of the alarm system requirements.

§ 15047.1. Definitions.

(a) "Plant tag" means the RFID-enabled tag that is labeled with a UID number and provided by the Department or the Department's designee for attaching to a cannabis plant.

(b) "Package tag" means the RFID-enabled tag that is labeled with a UID number and provided by the Department or the Department's designee for attaching to batches of cannabis or cannabis products.

§ 15047.2. General Requirements.

(a) A licensee shall create and maintain an account within the track and trace system prior to engaging in any commercial cannabis activity.

(b) All commercial cannabis activity shall be accurately recorded in the track and trace system.

DRAFT

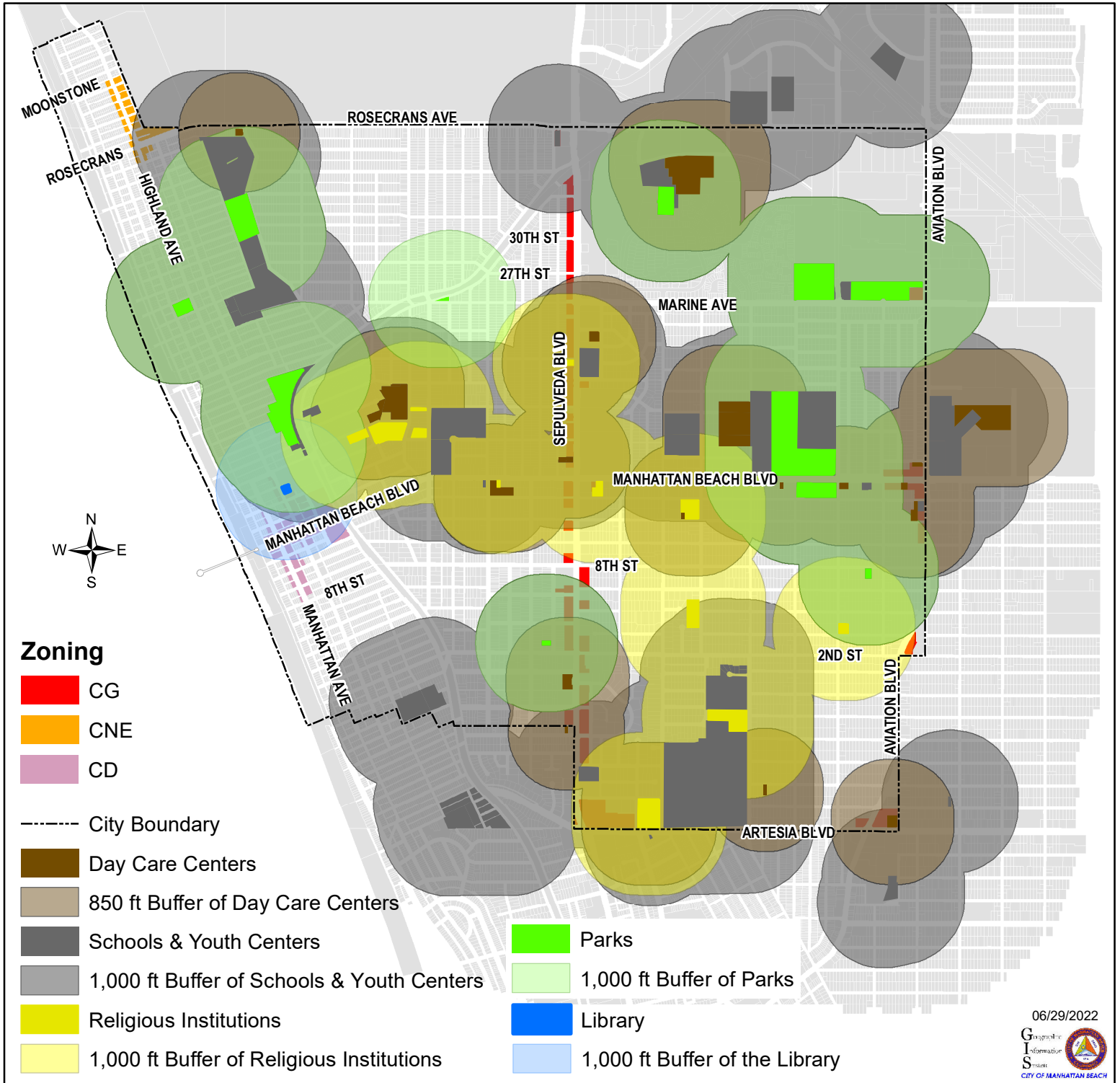
(c) A licensee is responsible for the accuracy and completeness of all data and information entered into the track and trace system. The licensee is responsible for all actions taken by the designated account manager or other account users while performing track and trace activities.

(d) A person shall not intentionally misrepresent or falsify information entered into the track and trace system.

City of Manhattan Beach

Cannabis Initiative

Sensitive Use Buffer Areas



City of Manhattan Beach Cannabis Initiative

Sensitive Use 1,500 foot Buffer Areas

