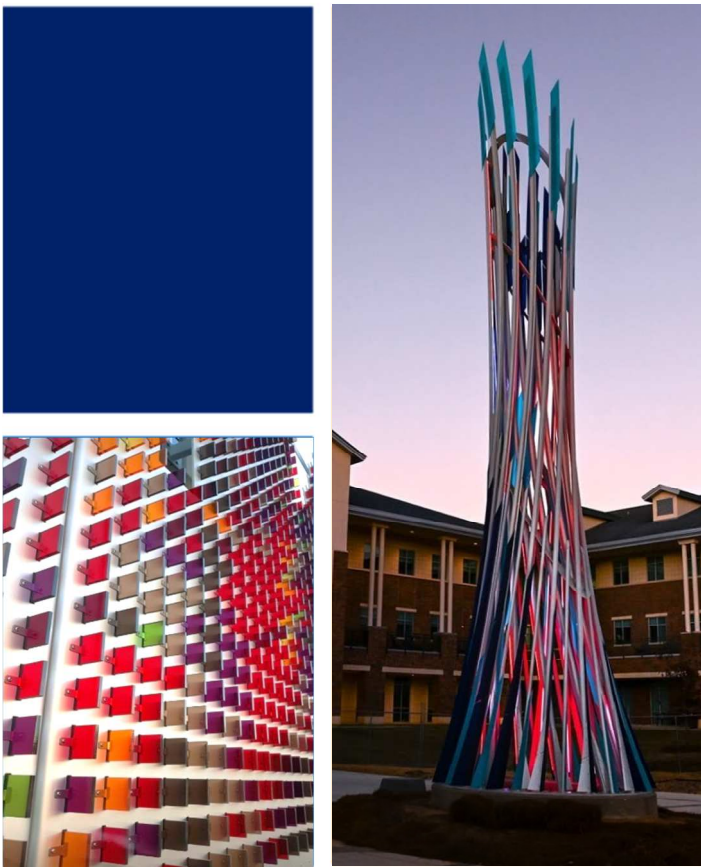




# ARTIST OPPORTUNITY: Call for Artists

## LOUISIANA STATE UNIVERSITY:

MUSIC & DRAMATIC ARTS, THE BAND HALL, AND  
CYPRESS RESIDENTIAL HALL  
EXTERIOR INTERACTIVE INSTALLATION



This opportunity is possible through the Louisiana Percent Art program which is administered by the Office of Cultural Development /Division of the Arts, in the Department of Culture Recreation and Tourism of the State of Louisiana, in collaboration with the Division of Administration and the Office of Facility Planning and Control.



ARTS - ARCHAEOLOGY - HISTORIC PRESERVATION - CODDFL

PERCENT for ART

# ARTIST OPPORTUNITY: CALL FOR ARTISTS

## Overview

The Louisiana Percent for Art Program is seeking artists or artist teams to design and implement three thematically related exterior, site-specific sculptures or installations of original design for the Music & Dramatic Arts Building, Band Hall, and Cypress Residential Hall at Louisiana State University (one artist or artist team will be chosen to execute ALL THREE). The artwork should actively engage students, faculty, and visitors in creative interactive experiences that emphasize the meaning and value of music. This commission is open nationally to professional artists 18 and over.

## Submission Requirements

Application materials must be received by **January 14<sup>th</sup>** via the **Call for Entry (CaFÉ) system available online at [www.callforentry.org](http://www.callforentry.org)**. **Deadlines in CaFÉ are at 11:59 M Mountain Time Zone** [Denver, Colorado, USA] on the day of the deadline.

The CaFÉ system will remain open until 11:59 PM MDT on January 14<sup>th</sup>. Staff will only be available for technical or website assistance Monday – Friday from 8:30 AM – 5:00 PM MDT (*Holidays may affect this time*). Applicants are encouraged to apply early to reduce risk of technical difficulties. Incomplete or late submissions will not be accepted for any reason.

A complete application must include:

- **Artist résumé** demonstrating a minimum of five (5) years of professional visual art experience (**NOT STUDENT WORK**). If submitting as a team, a current résumé should be submitted for each team member (Compiled into one document). A biography will not be accepted in place of a résumé.
- **Statement of interest** describing:
  1. Why you are interested in this project
  2. Previous experience with public art
  3. Your methods of working
  4. Your connection to (if any) or interest in Louisiana State University
  5. How you believe the art will enhance the chosen space(s)
- **References** that include the names and current contact information for three (3) individuals with whom you have worked, collaborated, or who have commissioned your work in the past.  
*References will be contacted for artists invited to develop a proposal for the commission.*
- **Images (6)** of your **original completed** commissions or artworks, not proposals, which demonstrate your qualifications for the project. 3-D models, sketches, or drawings will not be accepted. You must include the title, medium, dimensions, project budget (price), year completed, location, and a description. The value must be indicated in US dollars. **Each artwork must contain only one image with only one view of the work. Multiple views per image or unexecuted conceptual projects will not be considered**, and may disqualify your submission.
- Up to 3 **videos** (optional) of work examples

Image specifications: JPG, PNG - Maximum size per image 5MB, total 30MB.

\*Slides, emailed prints, or any physical submissions will NOT be accepted.

## Eligibility

This call for artists is open to professional artists 18 and over, regardless of race, color, religion, national origin, gender identification, military status, sexual orientation, marital status, or physical ability.

Artist teams may apply and must designate one artist as the lead contact. **Examples of work submitted must be original, recently completed artwork (within the last 10 years).**

The application, including all examples of work and supporting documents are considered the artist's official "submission." If any information submitted by the artist or artist's representative, including all supporting documents, is found fraudulent, the submission will be disqualified.

## Budget

The proposal selected by the committee will include an all-inclusive budget of **\$250,000** to cover all costs associated with the project, and commensurate with the intended scale, including but not limited to: research, professional consultations, formal reports from licensed structural and electrical engineers where appropriate, a long-term care and maintenance report from a licensed professional conservator, materials, fabrication, transportation, travel, insurance, foundation, installation (including site prep, electrical, and lighting), and photography and documentation of the artwork.

## Background

### Music & Dramatic Arts (South end of extended site)

Regardless of individual discipline, students who enroll in the College of Music & Dramatic Arts receive a wealth of resources and support, from newly renovated performance venues across campus, to hundreds of public performance opportunities each year, and passionate, committed classmates who foster a unique camaraderie. Mentoring and guiding our students are the unparalleled faculty of the School of Music and the School of Theatre, comprised of renowned scholars, stellar performers, vibrant creators, and inspiring teachers with active careers and international reputations for excellence. Music & Dramatic Arts is flanked to the west by the Historic LSU Greek Amphitheater, an integral part of the campus and Music & Dramatic Arts. This site is part of the overall Percent for Art project area.

#### School of Music

For more than a century, LSU has cultivated a rich tradition of musical and theatrical art forms. We proudly carry that heritage into the 21st century, by preparing students for modern leadership roles and careers in the performing arts, as well as providing outreach and cultural enrichment to the community at large. We are fortunate to be located in the city of Baton Rouge, a diverse metropolitan region of nearly 800,000 citizens, the state capital of Louisiana, and a vibrant hub for cultural development.

The School of Music offers prospective students a comprehensive selection of degree programs at the bachelors, masters and doctoral levels. Accredited by the National Association of Schools of Music in 1932, the School of Music numbers almost 400 majors, 90 graduate students, 70 faculty and professional staff, and is home to the historic LSU Opera, one of the oldest collegiate programs of its kind in the United States.

#### School of Theatre

The rapidly growing School of Theatre boasts a faculty and professional staff of 26, with 130 majors and 35 graduate students, and brings students a rare and unique learning opportunity through a close association with Swine Palace, a professional Equity theatre that operates year-round and offers substantial opportunities to work with national and international artists.

The LSU Theatre program attempts to serve its students in a number of ways, providing rigorous training in performance practices, the history and literature of the stage, and in the development of the critical, conceptual, and argumentative skills basic to a liberal arts education. The program aims to prepare its graduates for careers in both professional and educational theatre. The department also recognizes that theatre is no insular art but involves, reflects, and participates in the wider cultural thought and practices of our time.

Vigorous training in performance practices, the history and literature of the stage, and in the development of the critical, conceptual, and argumentative skills basic to a liberal arts education.

## Greek Amphitheater

The Greek Amphitheater opened in 1925 and seats over 3,000 people. It is still used today for outdoor performances of many types. It is adjacent to the Music & Dramatic Arts Building with “Enchanted Forest” nearby. There are future plans to repair and restore the fixed concrete seating and enhance the spaces behind the stage.

## Band Hall (North end of extended site)

The Department of Bands is a storied component of the LSU School of Music, tracing its origins to the military traditions of the “Old War Skule” over a century ago. The Department encompasses five distinct performing groups and hosts a wide array of outreach events, camps, and workshops dedicated to the advancement of the performing arts. The Sudler Trophy-winning Tiger Marching Band is comprised of 325 students from all over the LSU campus, each of whom possesses a strong sense of dedication and pride in their work.

## Cypress Residential Hall (Midpoint of extended site)

This residential facility was designed to replace 40 year old facilities and is part of a suite of three new residences, in this immediate vicinity of the campus. This one is the only one of the three neighbors funded to allow for Percent for Art. The residence is four stories housing 330 co-ed freshmen and has already implemented a portion of their Percent for Art funds on several stained glass installations. Cypress is adjacent to the area on campus called the Enchanted Forest which backs up to the Greek Theatre adjacent to Music & Dramatic Arts.

## About the Public Art

Louisiana State University seeks to connect these three sites through thematically related permanent installations that highlight the importance of music and dramatic arts as a discipline, a vital form of creative expression, and a way to bring people together. This project is open to a wide variety of artistic styles and approaches.

## Scope of Work

The development and design for the artwork should:

- Consider the elements of the site as a source of design ideas
- Consider the facility and the area(s) surrounding the artwork and their intended uses as described in this call
- Reflect LSU’s history, diversity and cultural profile
- Compliment the building(s) and the campus’ architecture and aesthetic values
- Be durable, sturdy, stable, suitable for climate conditions, resistant to UV damage, and safe for public interaction

## Selection Process & Evaluation Criteria

An Art Selection Committee (the Committee) may include (but is not limited to) representatives from the Louisiana Office of Facility Planning & Control, the architectural firm that designed the facility, representatives from LSU, professional artist(s), and the State Arts Council will review all eligible artist submissions.

Submissions are evaluated by the following criteria:

- Artistic excellence and originality as evidenced by the representations of past work images and other supporting materials
- Appropriateness of artist’s medium, style, and previous experience as they relate to the project goals and setting
- Experience with projects of a similar scale and scope

- Ability to create site-specific or site-reactive works
- Availability to participate in the design and implementation of the project as required
- Special consideration will be given to Louisiana artists as defined by La. R.S.25:9000.1(E)
- The committee may also take into consideration when selecting artists whether or not an artist is already represented in the state's collection

## Notifications and Proposals

Notifications will be issued by the end of **February 2023**. A full timeline will be provided to those finalists who have been shortlisted.

*This is a call for the submission of proposals. If your proposal is selected, you will be contacted by the Percent for Art program staff. A selection will be made within two weeks of the proposal meeting.*

Finalists will be required to attend two (2) meetings: A site visit to meet with the Committee and to view the space, and the presentation of the artist's proposal before the Committee.

The proposal must include the concept, materials, size, weight, installation requirements, details of maintenance, and budget. **The proposal must also include a maquette (if applicable) or digital renderings, which displays the physical volume of the space and allows for multiple perspectives of the artwork within the space.**

All proposal documents, including the maquette and renderings, will become property of the State of Louisiana and will be used for educational and/or promotional purposes of the program. Each finalist's proposal and/or maquette may be exhibited for Committee and community consideration.

***An honorarium/proposal fee of \$1,500 will be paid to artists to offset expenses associated with the development of proposals and travel (if applicable).***

---

NOTE: *"The Percent for Art Program and the Artist Selection Committee reserves the right to change, modify, or revise the Call to Artists, in part or whole, at any time before the submittal deadline without prior notice. Any change, modification or revision can be found [here](#). The Percent for Art Program and the Artist Selection Committee also reserves the right to reject any or all applications or proposals, to reject any finalist, or to terminate the selection process for any project without prior notice."*

The Louisiana Percent for Art Program was established by law in the 1999 legislative session. The law specifies that on projects using more than \$2,000,000.00 in state funds, one percent (1%) of the expenditure for construction or renovation of a state building shall be for works of art by artists and craftsmen for the building or its grounds.

---

Please direct questions about the Percent for Art Program or this project to:

**Scott Finch, Director**

Phone: 225-342-8176 Email: [sfinch@crt.la.gov](mailto:sfinch@crt.la.gov)

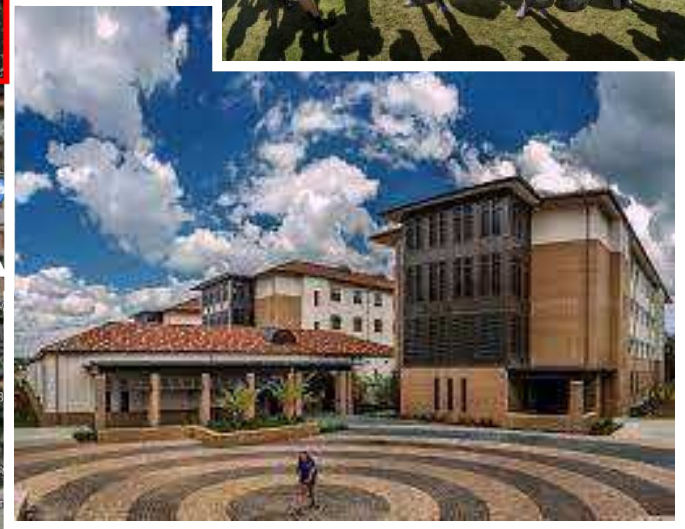
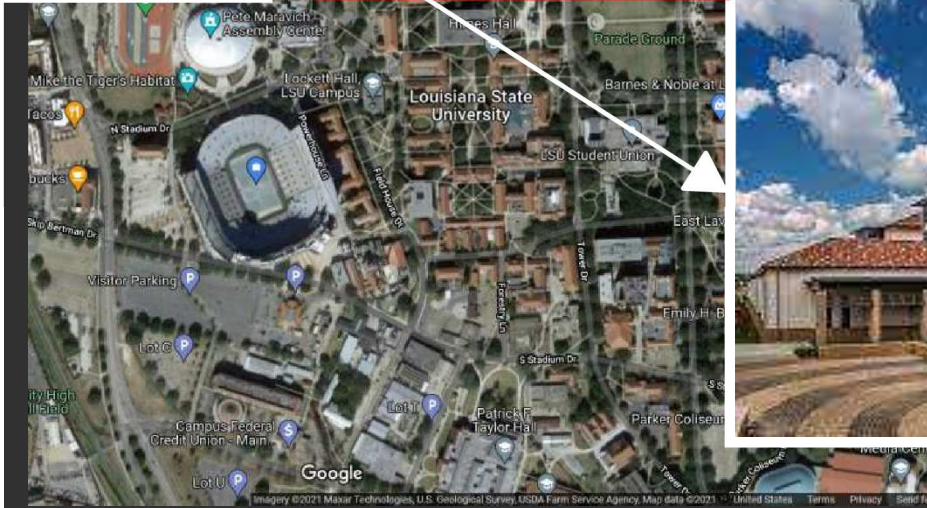
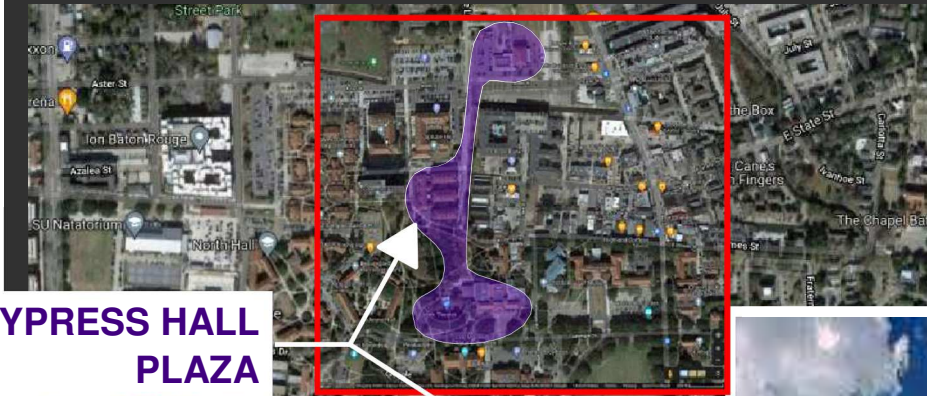
**April Baham, Project Manager**

Phone: 225-342-6083 Email: [abaham@crt.la.gov](mailto:abaham@crt.la.gov)

<https://www.crt.state.la.us/cultural-development/arts/>



**CYPRESS HALL  
PLAZA**



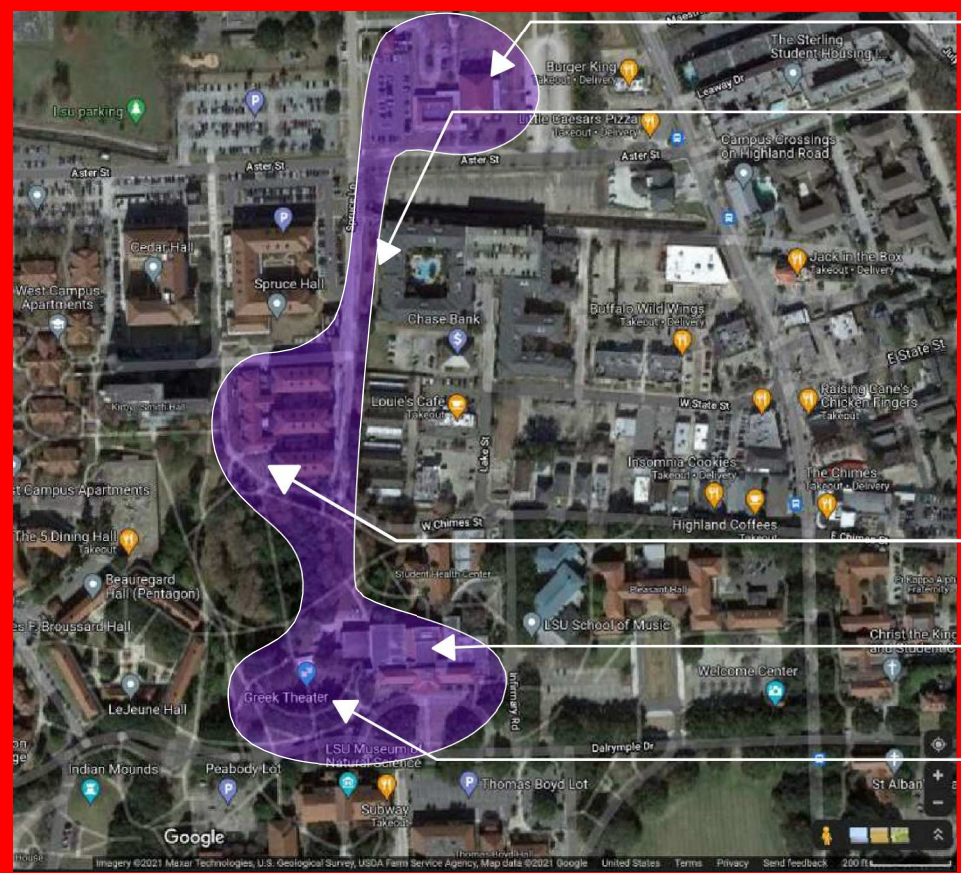
**LSU CAMPUS**

**BAND HALL  
BAND MARCHING PATH  
TOWARD CAMPUS FOR  
FOOTBALL GAMES**

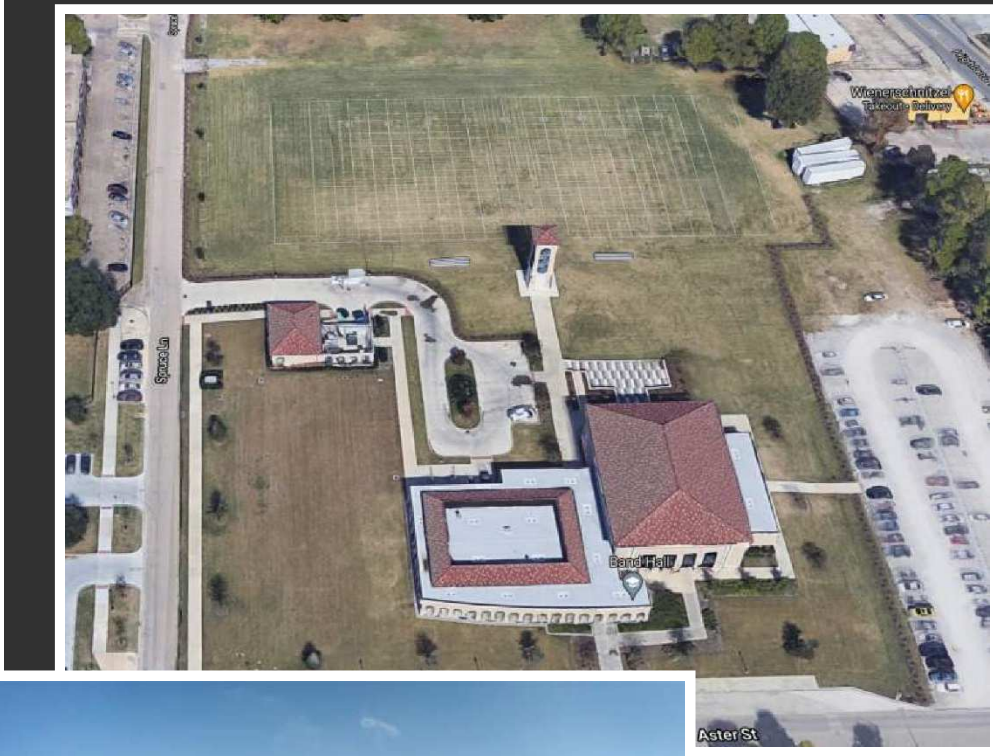


**CYPRESS RESIDENTIAL  
HALL & PLAZA**

**MUSIC AND  
DRAMATIC ARTS  
GREEK THEATER  
PRE-FOOTBALL GAME  
BAND FESTIVITIES  
EXTENDED SITE**







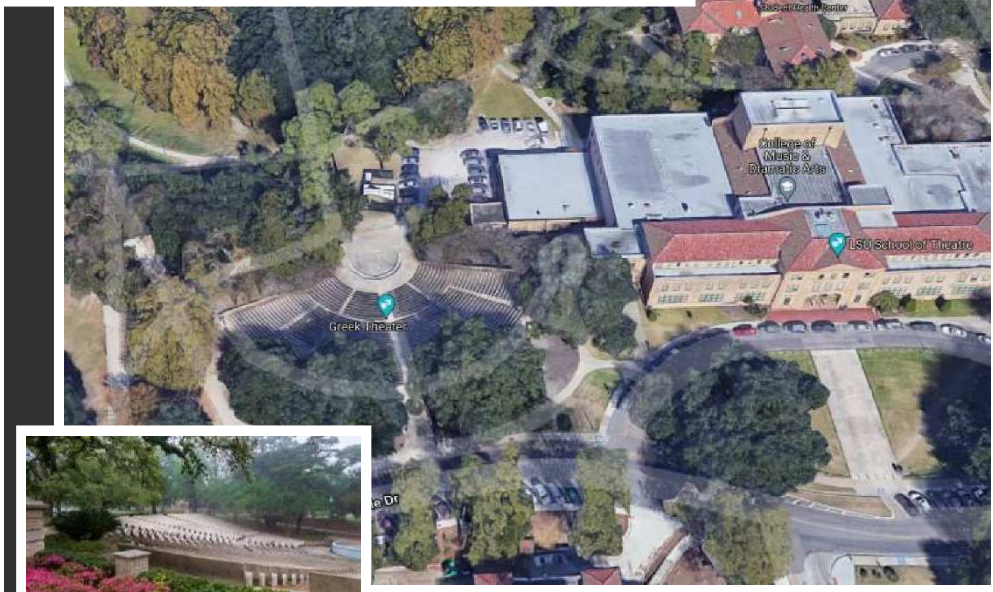
**THE BAND KICKS THINGS OFF AND GETS THE CROWD EXCITED TO BE ON CAMPUS. AT THE GREEK THEATER THEY CIRCLE UP AND PLAY IN THE MIDST OF THEIR FANS GIVING THEM THE SENSE OF BEING IN THE MIDDLE OF THE ACTION.**



## **PRACTICE FIELD & BAND HALL**



## **CYPRESS HALL**



## **M&DA THEATER**



## **GREEK THEATER & MUSIC AND DRAMATIC ARTS**