

STREET RESURFACING PROJECT CYCLE 2

SEPTEMBER 29, 2022



Project Team

City Representatives

- Harvey Gobas, PE - City Project Manager
Email: hgobas@manhattanbeach.gov
- Katherine Doherty, PE – City Engineer
Email: kdoherthy@manhattanbeach.gov
- Erik Zandvliet, City Traffic Engineer
Email: ezandvliet@manhattanbeach.gov

Design Consultant – Kreuzer Consulting

- Rick Kreuzer, PE – Project Manager
Email: rick@kreuzerconsulting.com



Project Objectives

- ❖ Improve drainage conditions with rolled curb and gutter
- ❖ Improved delineation of parking areas with rolled curb and gutter
- ❖ Widen all streets to provide minimum widths for two way traffic, emergency access and uniformity
- ❖ Reconstruct street to insure longevity.....construct streets to a higher standard
- ❖ Improve ADA accessibility with new access ramps, as required



Project Location



Project Features

- ❖ 7 Street Segments totaling 6,820 linear feet
- ❖ 5 Segments will include construction of rolled curb and gutter and pavement removal and construction (R&R)
- ❖ 2 Segments will include milling of pavement surface and placement of new asphalt rubber surface course over pavement fabric
- ❖ Access Ramp construction/reconstruction where required (15 locations total)
- ❖ New Sidewalk on west side of Flornoy Road from Valley Drive to 25th Street



Segment #1 — 27th St. - Laurel to Pacific Ave



Length = 240 ft

Area = 4,899 sq ft

Condition is Very Poor

- ❖ *No Ramps Required*
- ❖ *Improvement Strategy: R&R*



Segment #2 – Agnes Road - 29th to Marine



Length = 870 ft

Area = 21,728 sq ft

Condition is Poor to Very Poor

- ❖ *No Ramps Required*
- ❖ *Improvement Strategy: R&R*



Segment #3 — Flournoy Rd. - Ardmore to 19th St.



Length = 380 ft

Area = 12,161 sq ft

Condition is Fair to Poor

- ❖ *3 Access Ramps Required*
- ❖ *Improvement Strategy: Mill & Overlay*



Segment #4 – 29th Street - Blanche to Agnes



Length = 1,130 ft

Area = 20,282 sq ft

Condition is Fair to Poor

- ❖ *3 Access Ramps Required*
- ❖ *Improvement Strategy: R&R*



Segment #5 — Flourney Road - Valley to 33rd St.



Length = 2,630 ft

Area = 37,457 sq ft

Condition is Fair to Poor

- ❖ *5 Access Ramps Required*
- ❖ *Improvement Strategy: R&R*
- ❖ *New sidewalk on west side between Valley and 25th*



Segment #6 — Marine Avenue - Blanche to Valley Dr.



Length = 1,270 ft

Area = 25,400 sq ft

Condition is Fair to Poor

- ❖ *No Access Ramps Required*
- ❖ *Improvement Strategy: R&R*



Segment #7 — 14th Street - Pacific to Laurel Ave



Length = 300 ft

Area = 11,400 sq ft

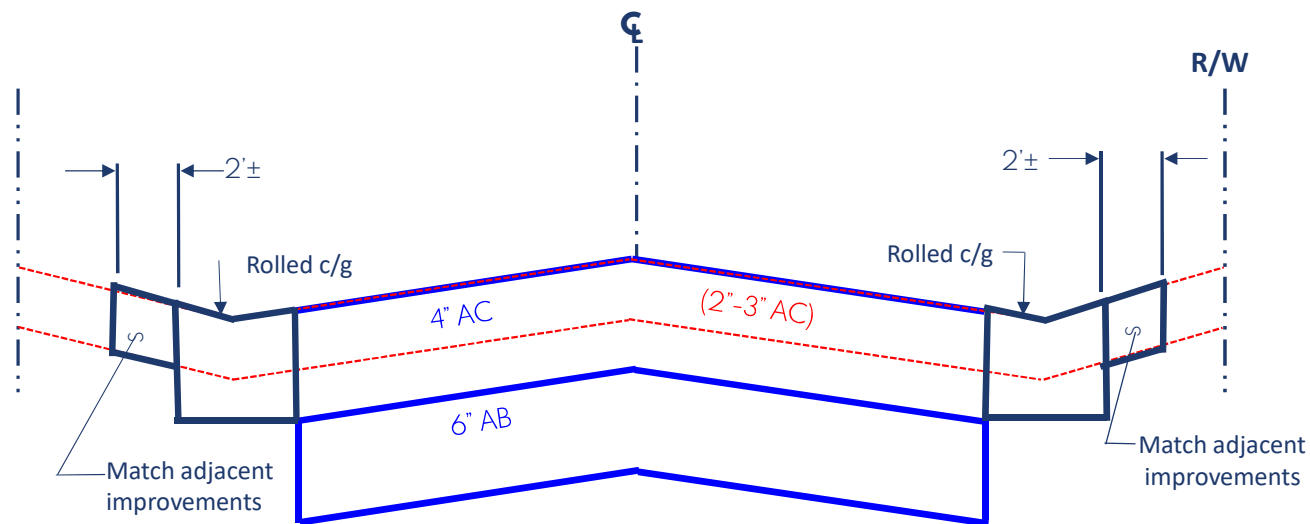
Condition is Fair to Poor

- ❖ *4 Access Ramps Required*
- ❖ *Improvement Strategy: Mill & Overlay*



Proposed R&R Improvements

- 27th (#1), Agnes (#2), 29TH (#4), Flournoy So. (#5) & Marine (#6)

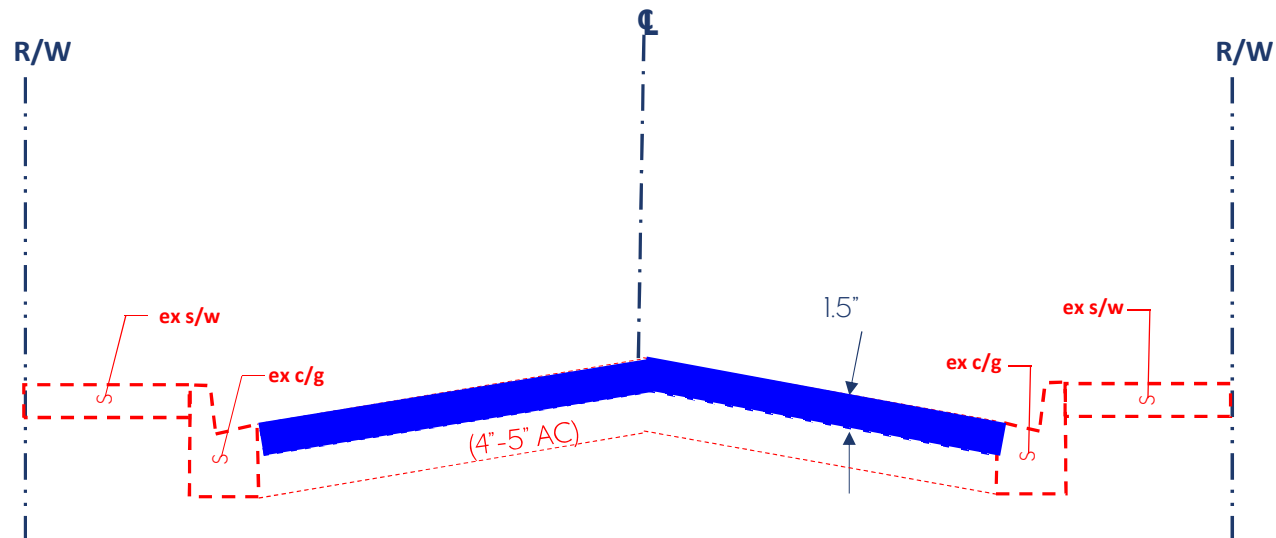


1. Existing Street Section
2. Construct rolled c/g and join existing improvements
3. Remove existing and construct new roadway section



Proposed Overlay Improvements

Flournoy So. (#3) and 14th (#7)



1. Existing Street Section
2. Mill pavement to a depth of 1.5"
3. Place pavement fabric and 1.5" ARHM overlay



Proposed improvements



Before Condition



After Condition

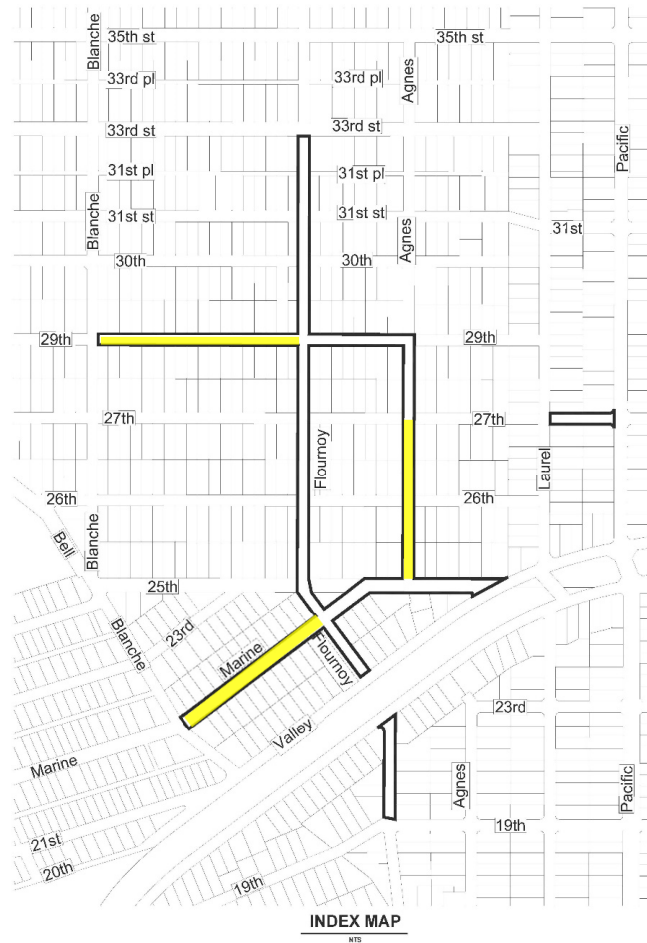


Construction Approach

- ❖ Construct streets in segments.
- ❖ Convert street segments under construction to temporary one way traffic and construct ½ of the street. Once completed, flip traffic and complete the other side.
- ❖ Maintain driveway access to the greatest extent possible.
- ❖ Temporary “No Parking” in construction zone.
- ❖ Each street segment will take approximately 4 weeks to complete (2 weeks per side).



Tentative Construction Phasing



Phase

Duration

1

1 month (2 weeks per side)



Tentative Construction Phasing



Phase

Duration

2

1 month (2 weeks per side)



Tentative Construction Phasing



New sidewalk on west side

Phase

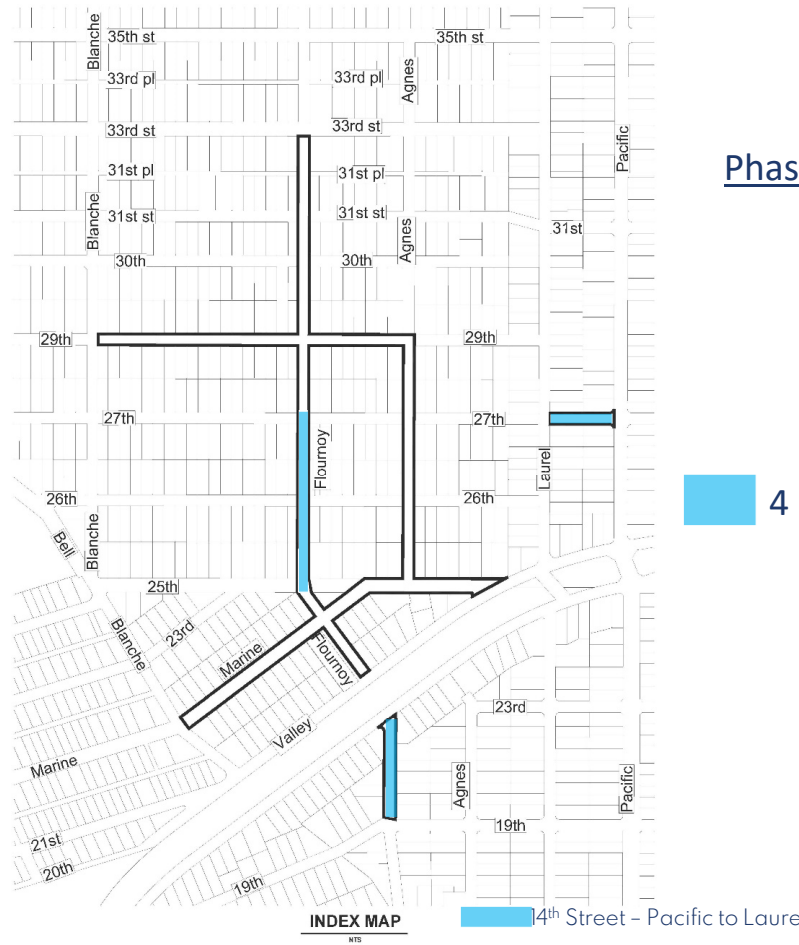
Duration

3

1 month (2 weeks per side)



Tentative Construction Phasing



Phase

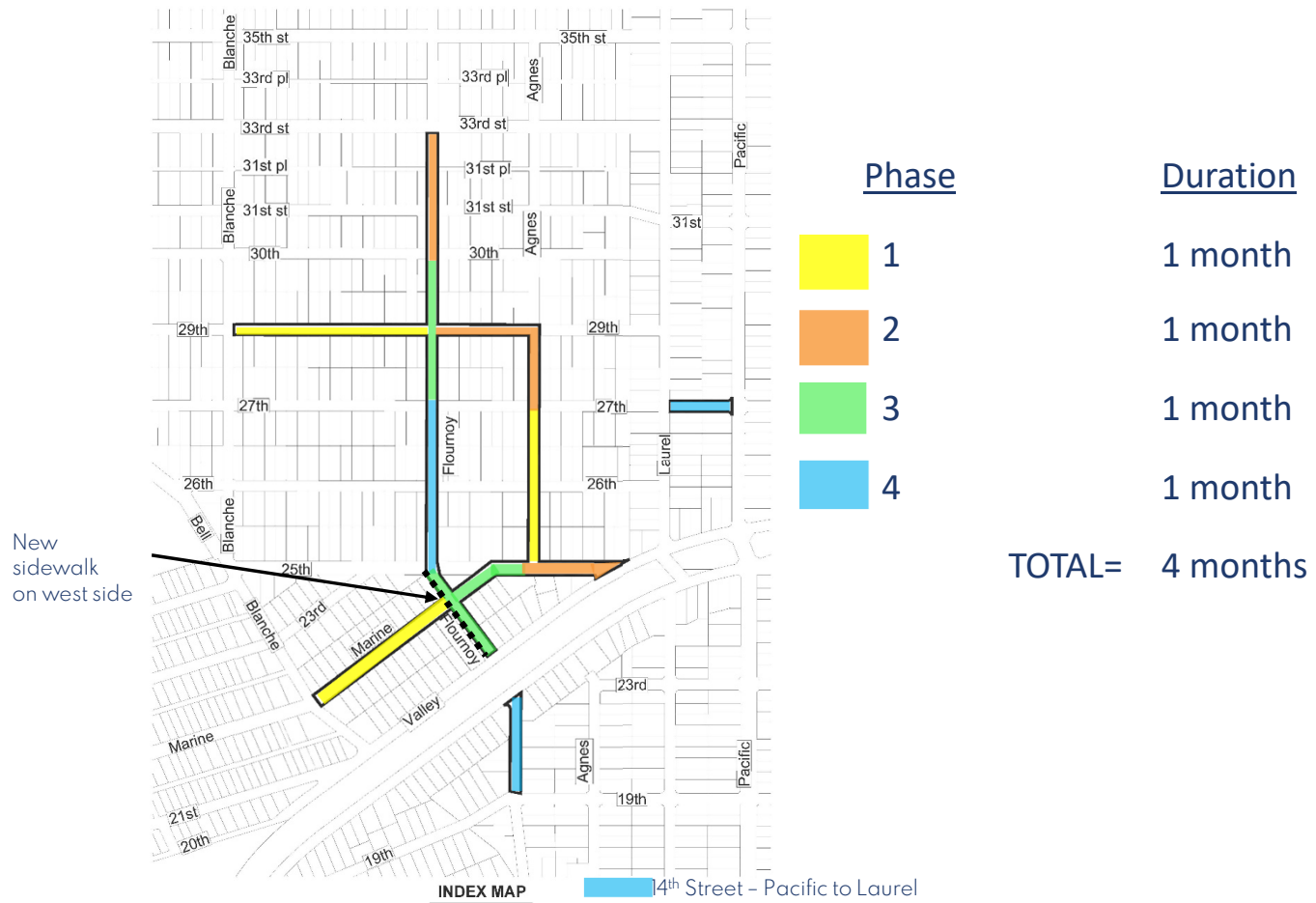
Duration

4

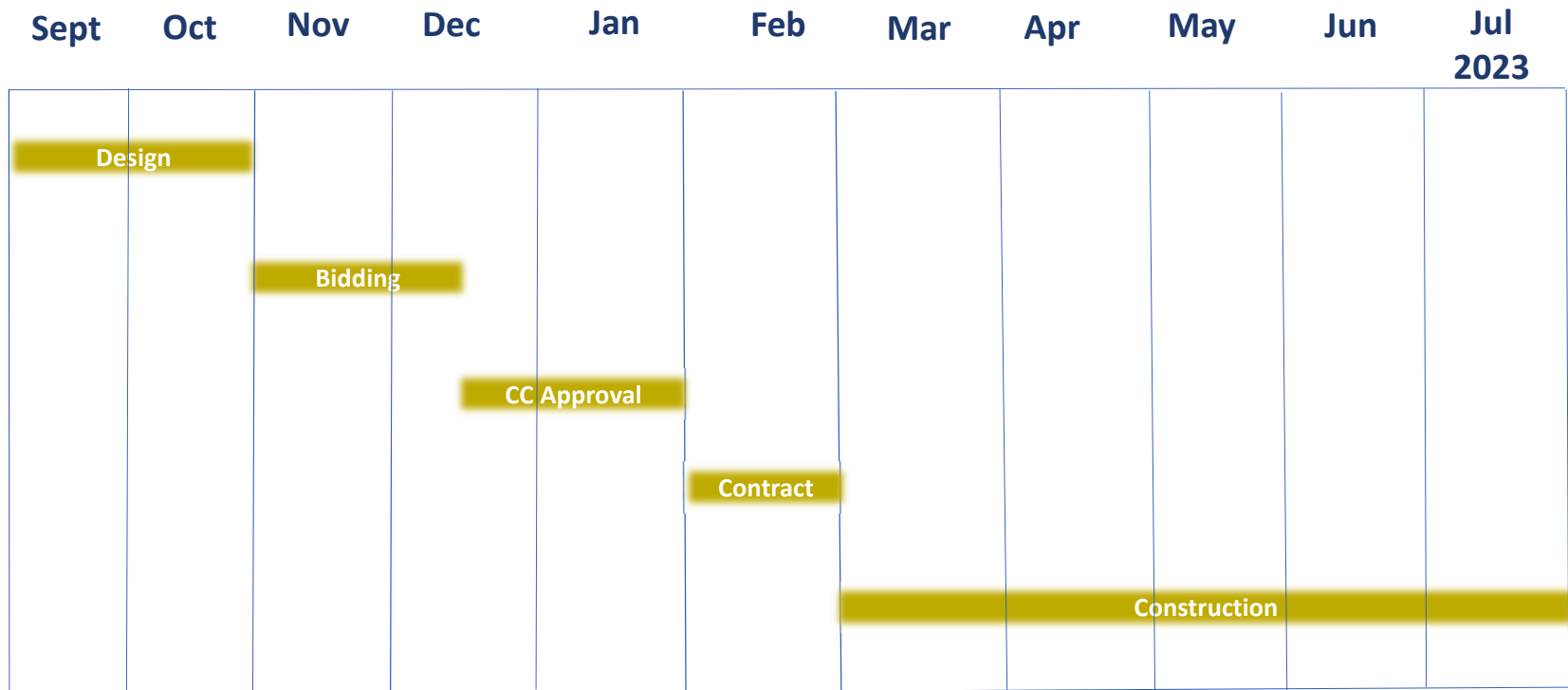
1 month (2 weeks per side)



Tentative Construction Phasing



Tentative Project Schedule



Questions

