



**CITY OF MANHATTAN BEACH
DEPARTMENT OF COMMUNITY DEVELOPMENT
TRAFFIC ENGINEERING DIVISION
STAFF REPORT**

DATE: October 26, 2023

TO: Parking and Public Improvements Commission

FROM: Erick Lee, Public Works Director

BY: Tim Birthisel, Senior Civil Engineer

SUBJECT: TMDL Trash Treatment Project and Coastal Restoration and Resiliency Initiatives

RECOMMENDATION

Staff recommends the Parking and Public Improvements Commission receive public testimony for the TMDL Trash Treatment Project and associated Coastal Restoration and Resiliency initiatives and provide recommendations for staff consideration.

BACKGROUND

In collaboration with neighboring cities and the Los Angeles County Flood Control District (LACFCD), Manhattan Beach has co-developed the Enhanced Watershed Management Program (Beach Cities EWMP) to adhere to the 2012 Los Angeles Regional Water Quality Control Board (RWQCB) Storm Water Permit. The Beach Cities EWMP identifies capital projects aimed at minimizing wet weather discharges and eradicating dry weather discharges into Santa Monica Bay, thereby reducing pollutant influx and meeting water quality-based effluent limitations. The City Council authorized the submission of the Beach Cities EWMP to the RWQCB on June 15, 2021.

The City has committed to installing full capture devices to address 100% of the storm drainage system tributary to Santa Monica Bay within its jurisdiction by August 31, 2025, as part of its broader effort to comply with the Santa Monica Bay Trash Total Maximum Daily Load (TMDL). This initiative is complemented by existing City ordinances prohibiting public smoking, plastic bags at point-of-sale, and polystyrene food service ware.

In September 2022, the California Department of Water Resources (DWR) granted \$830,000 in Integrated Regional Water Management (IRWM) funding to the Coastal Restoration and Resiliency Project, which encompasses the TMDL Trash Treatment Project and the Dune Restoration Project, constructed by the City of Manhattan Beach and the Bay Foundation, respectively.

DISCUSSION

The TMDL Trash Treatment Project aims to substantially diminish contaminated runoff from Manhattan Beach into Santa Monica Bay, addressing discharge compliance requirements for approximately 40% of the City's watershed. The project will install six hydrodynamic separator units, a debris-separating baffle box, and 56 trash screening devices at specified locations, ensuring sediment, oil, trash, and debris are removed before stormwater outflow reaches the ocean.

Residents adjacent to the installation sites of the hydrodynamic separators and the debris-separating baffle box are expected to experience significant construction impacts, including noise, dust, and traffic disruptions, with potential driveway access throughout construction. The installation of separators may cause these impacts for 3-4 months, while work on 1st Street near the Strand will last for a 6-8 month period. Conversely, residents near the installation of the 56 trash screening devices will experience minor impacts, such as sawcutting and pavement rehabilitation, lasting 2-3 weeks per catch basin location. To minimize the construction impacts on residents, the City plans to implement several mitigation measures. For the hydrodynamic separators and debris-separating baffle box installations, fencing with noise-reducing sound barriers and water sprayers for dust control will be employed to mitigate noise and air quality concerns. A detailed detour plan will be prepared and published in advance to manage traffic disruptions effectively. The noisiest work will be scheduled between 9am and 3pm, and residents will be kept informed through a comprehensive notification system that includes emails and posted notices. Moreover, a Construction Manager will be appointed to field concerns, offer timely updates, and ensure transparent communication between the City and its residents.

It is crucial to note that parking will be temporarily impacted during the construction phases, particularly on 1st Street, Ocean Drive, and 27th Street. Residents and visitors should anticipate reduced parking availability in these areas and plan accordingly. Alternative parking options and any available temporary parking provisions will be communicated to affected residents and businesses in advance of the construction start date.

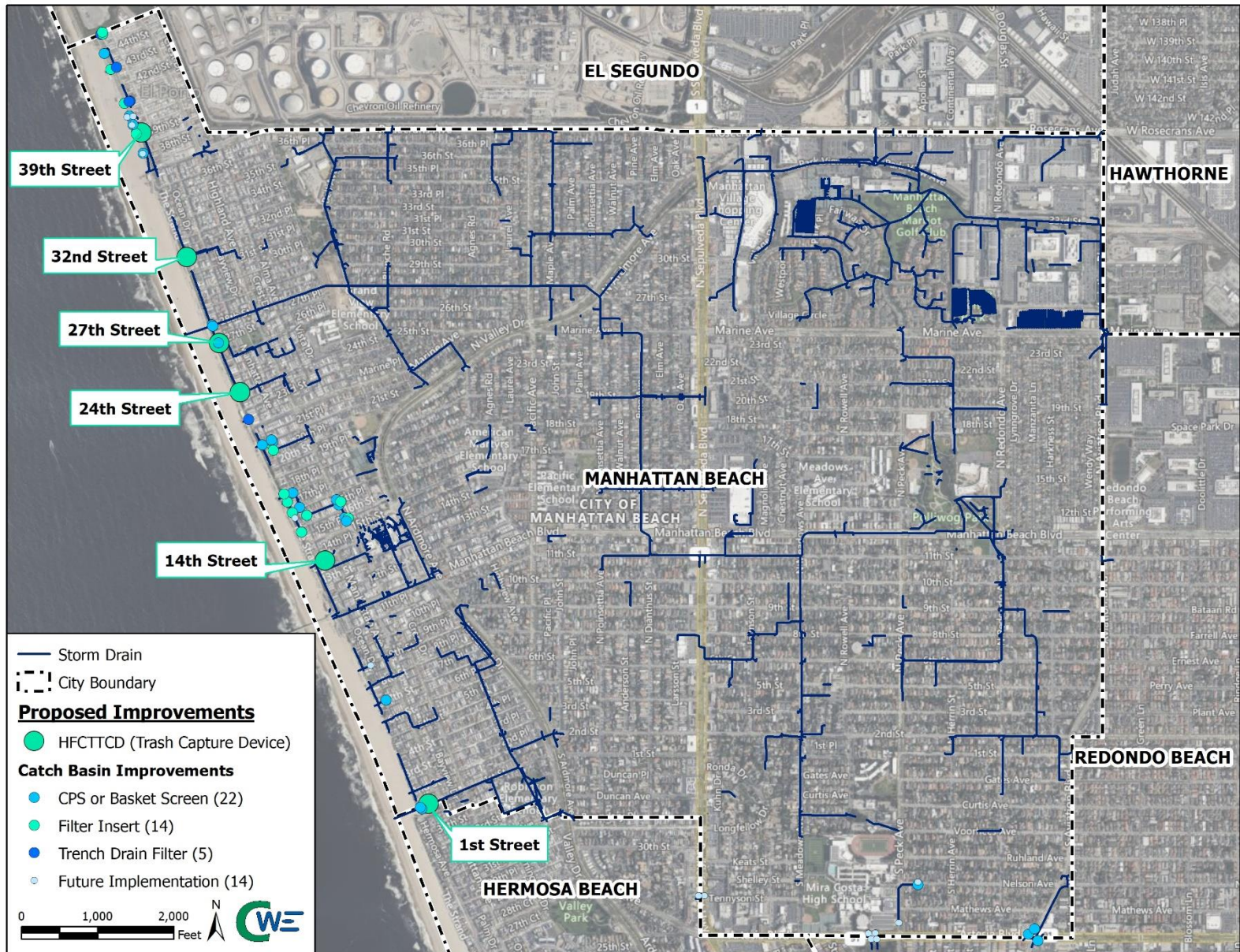
PUBLIC NOTIFICATION, OUTREACH, AND COMMENT

Public engagement and stakeholder input are pivotal to the project's success. The project team will conduct a public outreach meeting in December in Council Chambers at 6pm, to present the project designs and discuss their potential impacts and benefits to the community. Additionally, a courtesy notice will be mailed to all property owners and residents within a specified radius of the project area, providing instructions on how to comment on the project and/or attend future meetings.

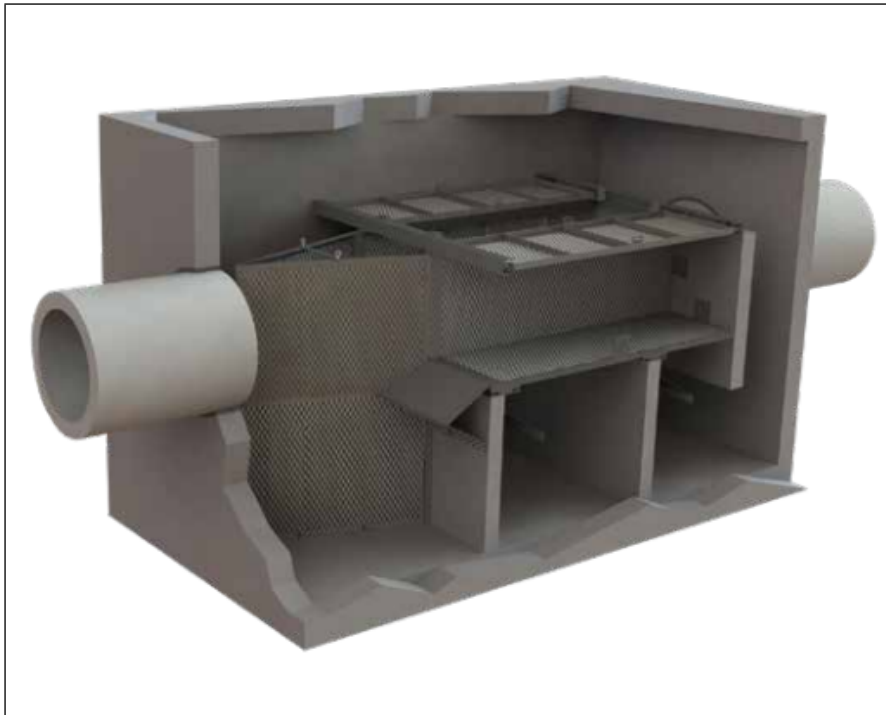
EXHIBITS:

- A. Project Location Map

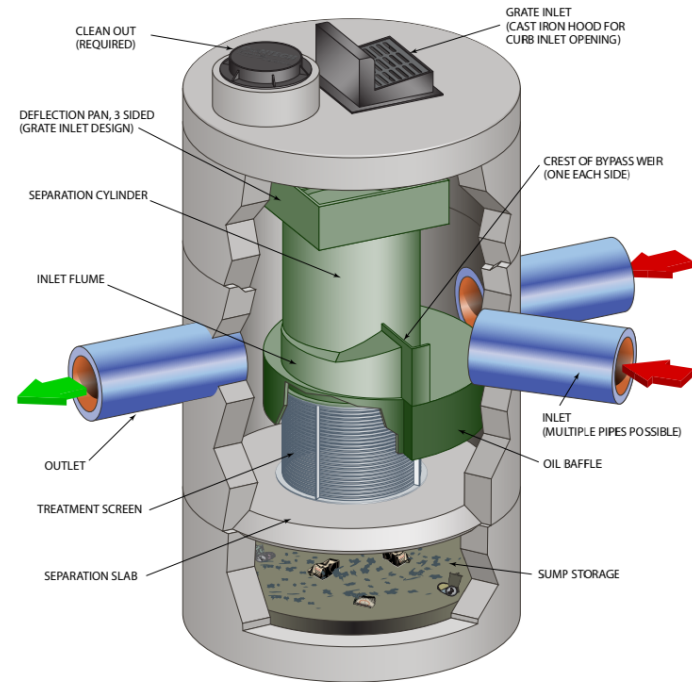
**THIS PAGE
INTENTIONALLY
LEFT BLANK**



Overall Implementation Schematic



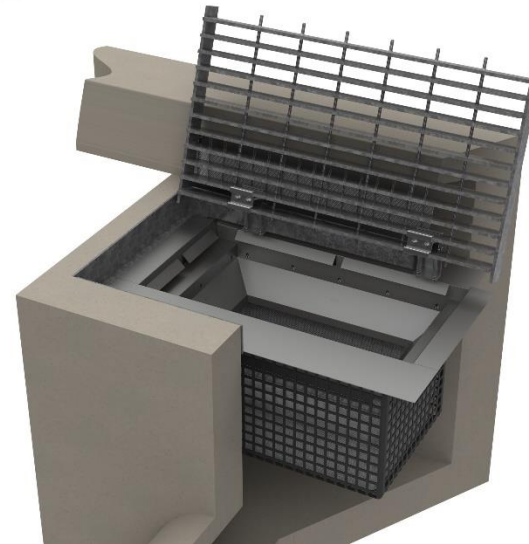
Debris Separating Baffle Box



Hydrodynamic Separator



Connector Pipe Screen



Catch Basin Inlet Filter