



LEGEND:

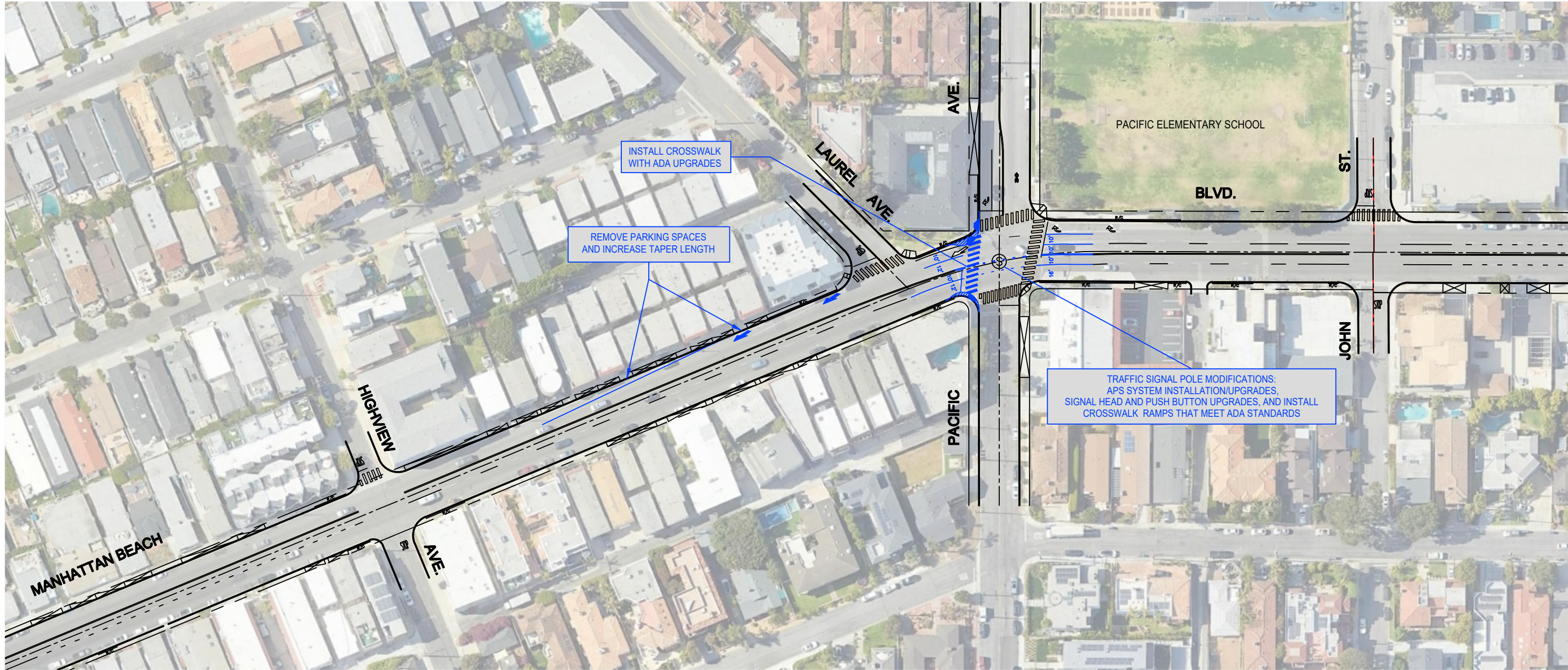
-  EXISTING STRIPING TO REMAIN
-  PROPOSED STRIPING

11/1/2023
:JC11002 MANHATTAN BEACH AS NEEDED TE SERVICES/TASK ORDERS/2023-25 EXTENSION/TO-23-1/TASK 3 FILES/DESIGN/SIGNING & STRIPING/CONCEPTUAL PLAN_LAY_20231101

MANHATTAN BEACH BOULEVARD IMPROVEMENTS AT AND NEAR PACIFIC AVENUE
CONCEPT 1
PACIFIC AVENUE WEST LEG CROSSWALK AND SIGNAL UPGRADES



300 Corporate Pointe, Suite 470
Culver City, California 90230
Ph (310) 473 6508 F (310) 444 9771
WWW.KOACORP.COM



LEGEND:

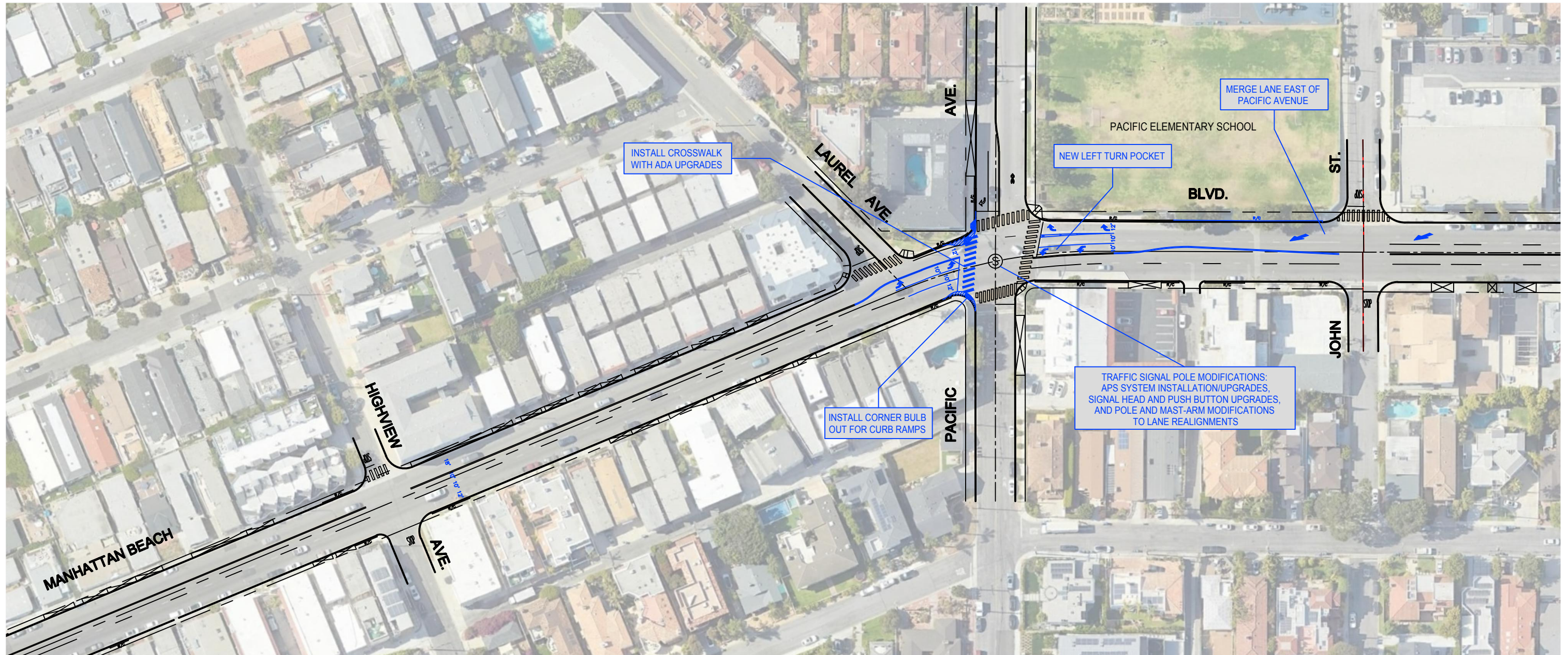
- EXISTING STRIPING TO REMAIN
- PROPOSED STRIPING

11/2/2023
:JC11002 MANHATTAN BEACH AS NEEDED TR SERVICES/TASK ORDERS/2023-25 EXTENSION/TO-23-1/TASK 3 FILES/DESIGN/SIGNING & STRIPING/CONCEPTUAL PLAN_AY_20231102

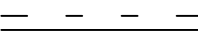

**MANHATTAN BEACH BOULEVARD IMPROVEMENTS AT AND NEAR PACIFIC AVENUE
CONCEPT 2
CaMUTCD COMPLIANT WESTBOUND MERGE THROUGH NORTH CURB PARKING REMOVALS**



300 Corporate Pointe, Suite 470
Culver City, California 90230
Ph (310) 473 6508 F (310) 444 9771
WWW.KOACORP.COM



LEGEND:

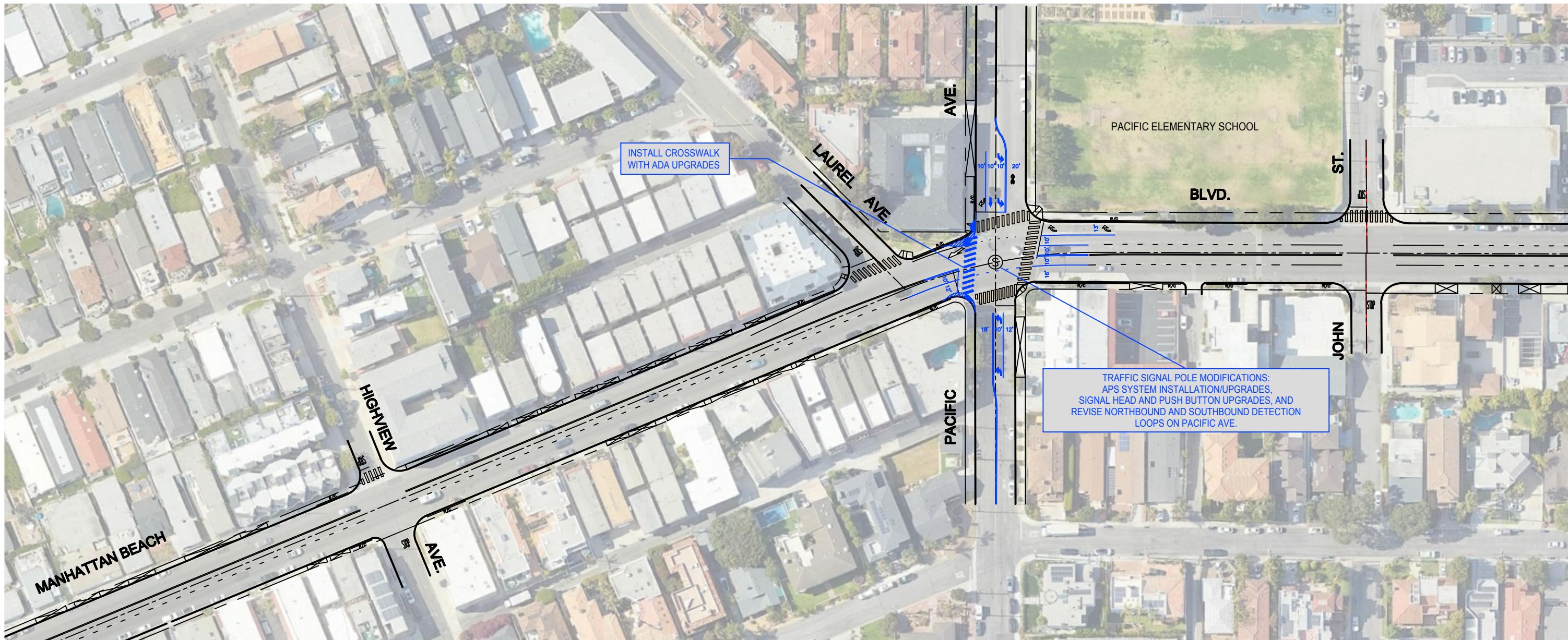
-  EXISTING STRIPING TO REMAIN
-  PROPOSED STRIPING

11/2/2023
:JC11002 MANHATTAN BEACH AS NEEDED TE SERVICES/TASK ORDERS/2023-25 EXTENSION/TO-23-1/TASK 3 FILES/DESIGN/SIGNING & STRIPING/CONCEPTUAL PLAN_LAY_20231101



MANHATTAN BEACH BOULEVARD IMPROVEMENTS AT AND NEAR PACIFIC AVENUE
CONCEPT 3
EASTBOUND AND WESTBOUND LEFT-TURN POCKETS AT PACIFIC AVENUE



300 Corporate Pointe, Suite 470
Culver City, California 90230
Ph (310) 473 6508 F (310) 444 9771
WWW.KOACORP.COM



LEGEND:

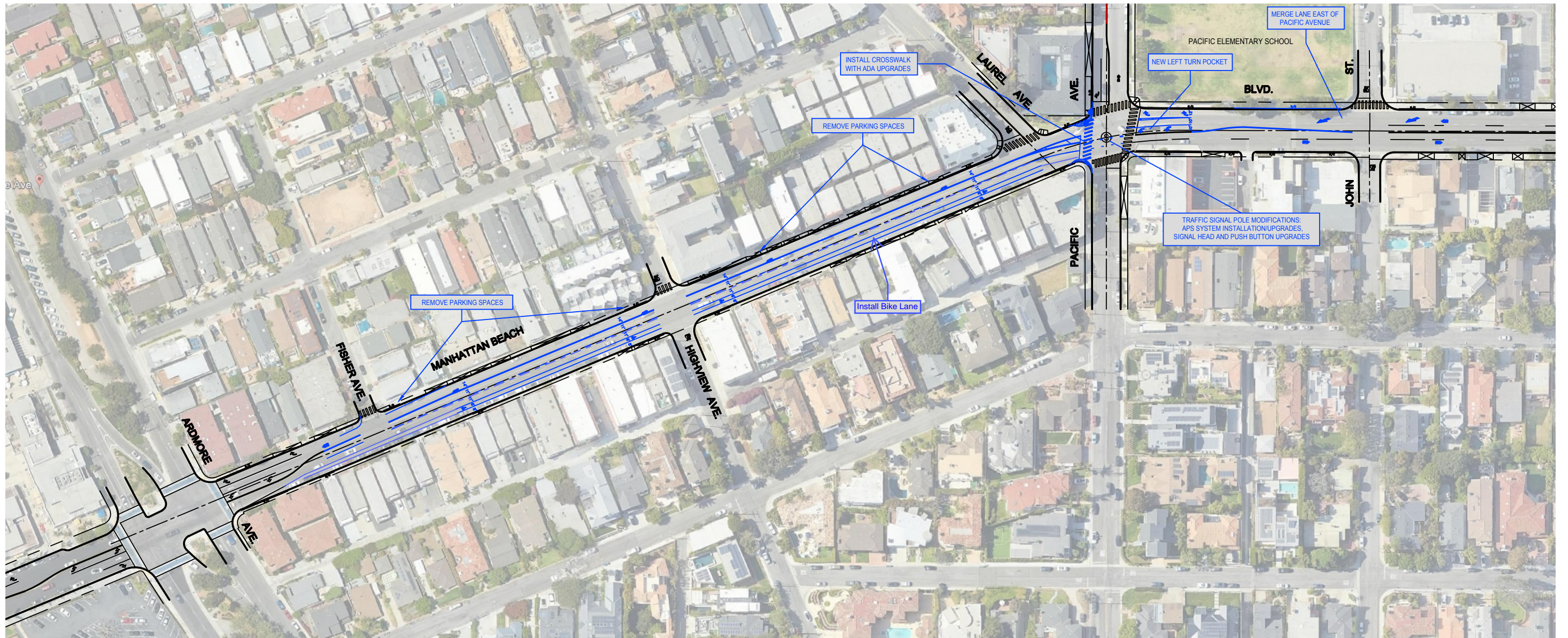
-  EXISTING STRIPING TO REMAIN
-  PROPOSED STRIPING

11/482023
 :JC11002 MANHATTAN BEACH AS NEEDED TE SERVICES/TASK ORDERS/2023-25 EXTENSION/TO-23-1/TASK 3 FILES/DESIGN/SIGNING & STRIPING/CONCEPTUAL PLAN_MBB_20231108

MANHATTAN BEACH BOULEVARD IMPROVEMENTS AT AND NEAR PACIFIC AVENUE
 CONCEPT 4
 NORTHBOUND AND SOUTHBOUND LEFT-TURN POCKETS AT PACIFIC AVENUE AND SIDEWALK BUMPOUT



300 Corporate Pointe, Suite 470
 Culver City, California 90230
 Ph (310) 473 6508 F (310) 444 9771
WWW.KOACORP.COM



LEGEND:

- EXISTING STRIPING TO REMAIN
- PROPOSED STRIPING

11/8/2023
:JC11002 MANHATTAN BEACH AS NEEDED TE SERVICES/TASK ORDERS/2023-25 EXTENSION/TO-23-1/TASK 3 FILES/DESIGN/SIGNING & STRIPING/CONCEPTUAL PLAN_MBB_20231108

**MANHATTAN BEACH BOULEVARD IMPROVEMENTS AT AND NEAR PACIFIC AVENUE
CONCEPT 5
PROVIDE WESTBOUND BIKE LANE FROM ARDMORE AVENUE TO PACIFIC AVENUE**



300 Corporate Pointe, Suite 470
Culver City, California 90230
Ph (310) 473 6508 F (310) 444 9771
WWW.KOACORP.COM