

S-265 Pacific Ave Wastewater Pump Station (WWPS) Conversion to Gravity Line Project

December 20, 2023 Community Meeting



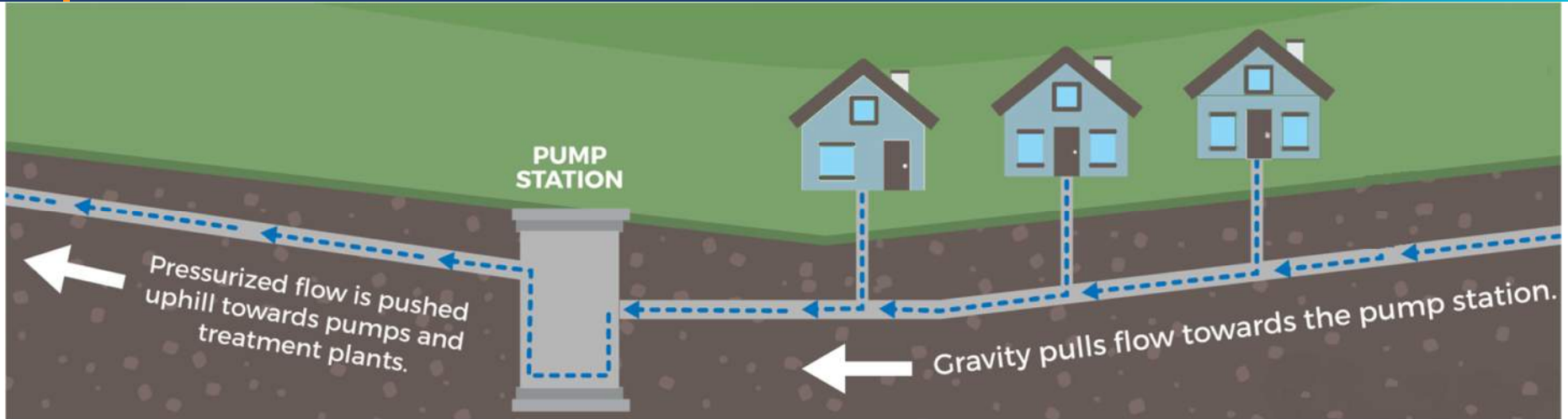
Note: This PowerPoint presentation is intended solely as a visual aid to an oral staff presentation of an agenda report topic. In the event of any differences between the presentation and the agenda report, the information in the agenda report prevails.

Presentation Agenda

- Sanitary Sewer System Overview
- Existing Wastewater Pump Station
- Proposed Gravity Line
- Q&A



Overview - Sanitary Sewer System



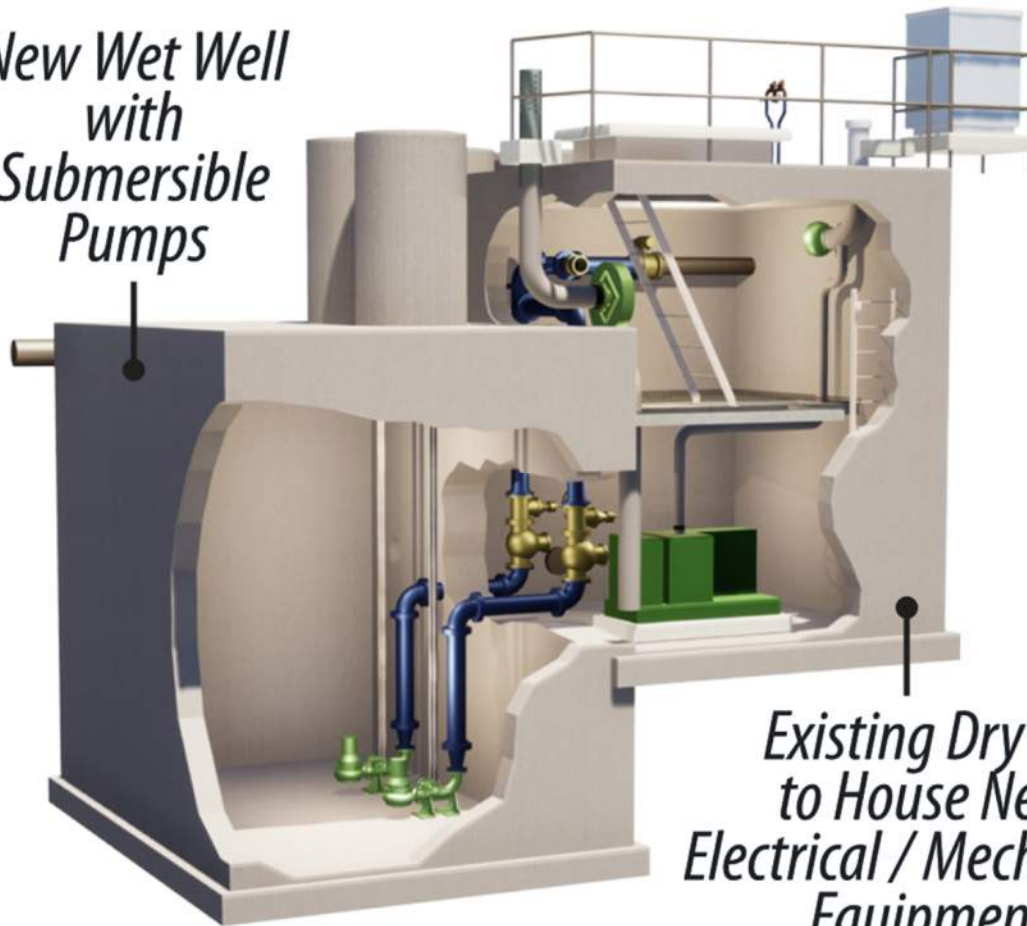
City Existing Wastewater Collection System comprised of:

- 81.6 miles (430,784 linear feet) of pipe.
- 2,086 manholes and cleanouts.
- 8 wastewater pump stations.
- 5,114 linear feet of WWPS force mains.
- City wastewater collection system connects to the Los Angeles County Sanitation District (LACSD) system



Overview - Typical Pump Station

*New Wet Well
with
Submersible
Pumps*



*Existing Dry Pit
to House New
Electrical / Mechanical
Equipment*

Key elements:

- Wet well
- Dry Pit
- Pump & Motor
- Piping & Valves
- Power supply system
 - Permanent & Generator
- Equipment control and alarm system
- Ventilation system



Existing WWPS - Background & History

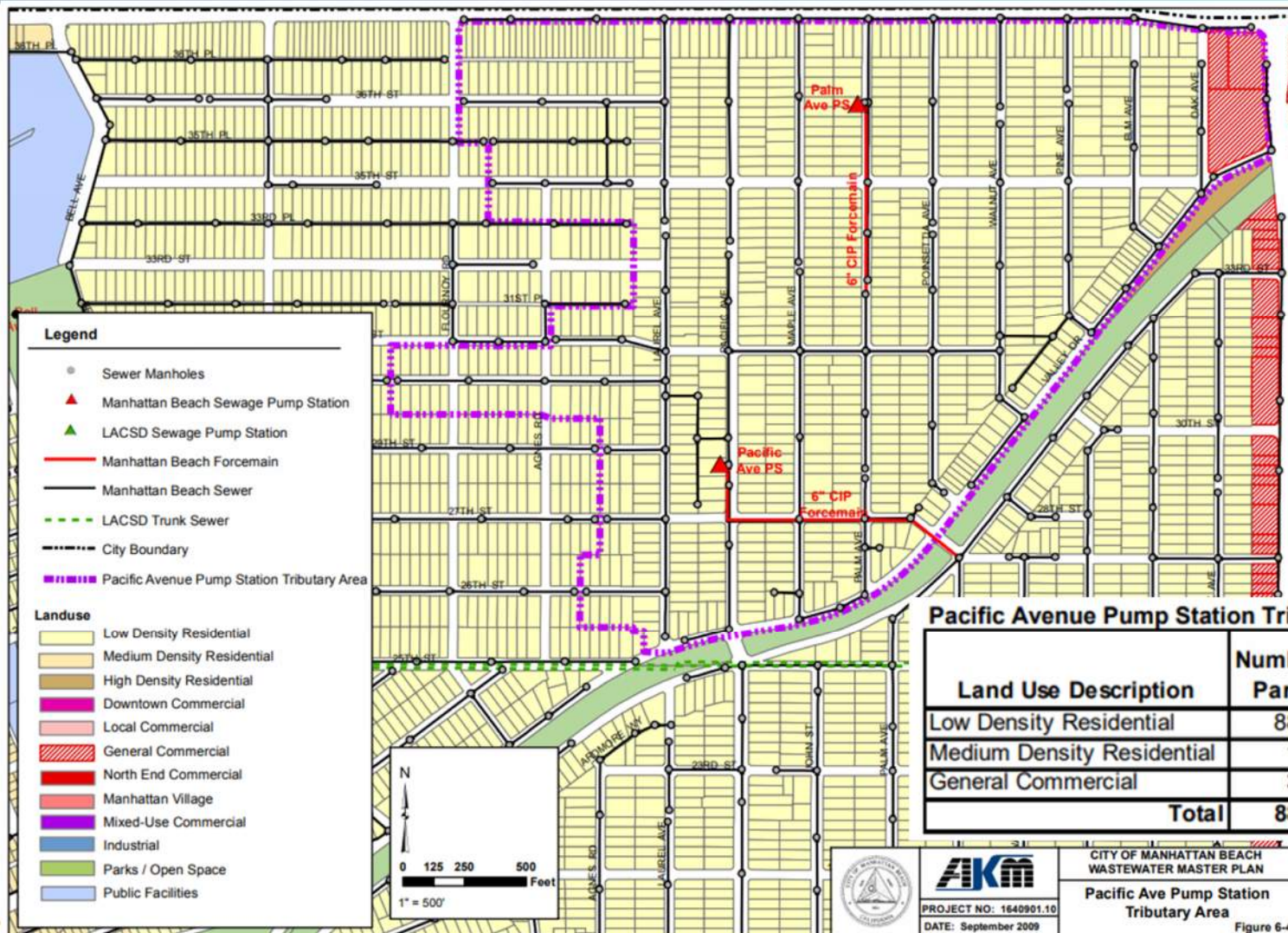
- 1950s Pacific Avenue WWPS and force main constructed
- 1990s mechanical and electrical upgrades completed
- 2010 Wastewater Master Plan identified WWPS for storage capacity and redundancy upgrades
- 2020s Facility now approaching end of useful life.
- 2020 Preliminary Engineering began with Basis of Design Reports for three WWPS including Pacific
- 2022 Basis of Design Reports received by City Council including preferred gravity alternative for Pacific
- 2024 Final Design



Existing WWPS - Location



Existing WWPS – Tributary Area



CITY OF
MANHATTAN BEACH

PACIFIC AVE WASTEWATER PUMP STATION (WWPS) CONVERSION TO GRAVITY LINE PROJECT
DECEMBER 20, 2023

Existing WWPS – Numbers

TYPE	WET WELL	PUMP	MOTOR	GENERATOR	FORCE MAIN
WETWELL/ DRYWELL	10 ft x 4 ft x ~11.5 ft	2 @ 304 gpm	10 HP	Diesel Fueled	6 inch Cast Iron Pipe
FLOW STUDY DURATION	AVERAGE DRY WEATHER FLOW	PEAK DRY WEATHER FLOW (CALCULATED)	PEAK WET WEATHER FLOW (CALCULATED)	MAX DRY WEATHER FLOW	
2010 WWMP (12/21/08 - 03/14/09)	98	269	376	N/A	
2020 CMB (07/13/20 - 09/038/20)	156	414	558	370	



Proposed Gravity Line - Scope of Work

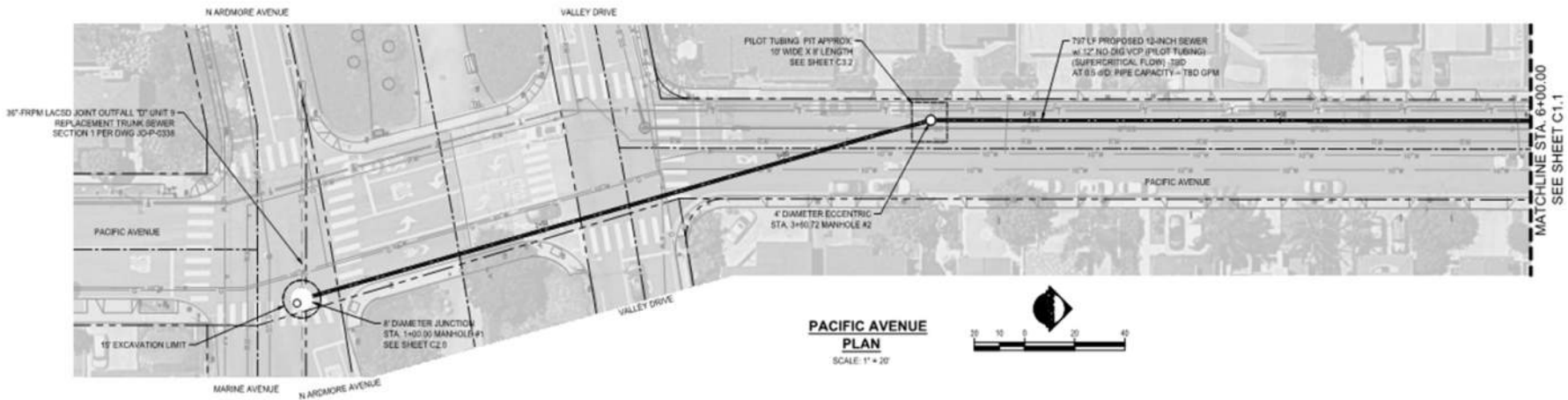
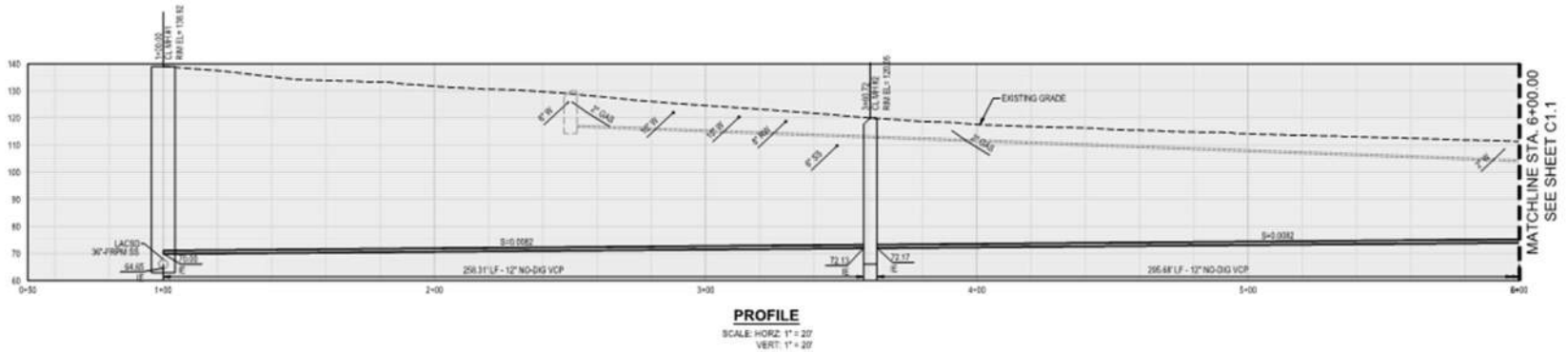
- 900 feet of new 12-inch gravity pipe installed via trenchless technology
- 5 new sewer manholes along Pacific Ave includes a new 70 foot deep junction structure connection to LACSD's 36-inch sewer trunk
- Relocation of conflicting utilities
- Existing pump station - remove portions such as electrical, mechanical , top 5 feet of structure, etc. and abandon below 5 feet of structure, etc.
- Abandon 1,225 feet of existing 6" force main



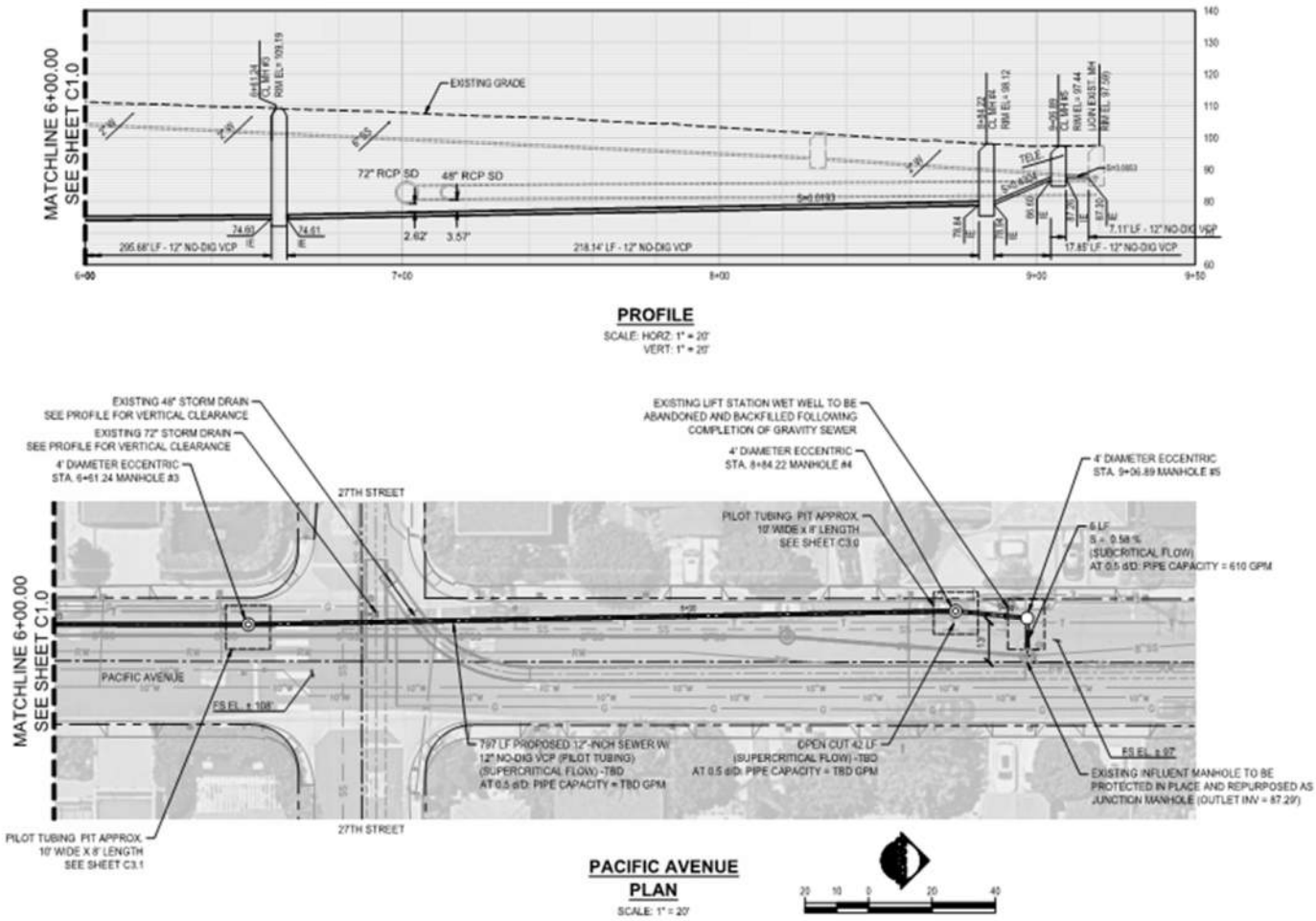
Proposed Gravity Line - Location



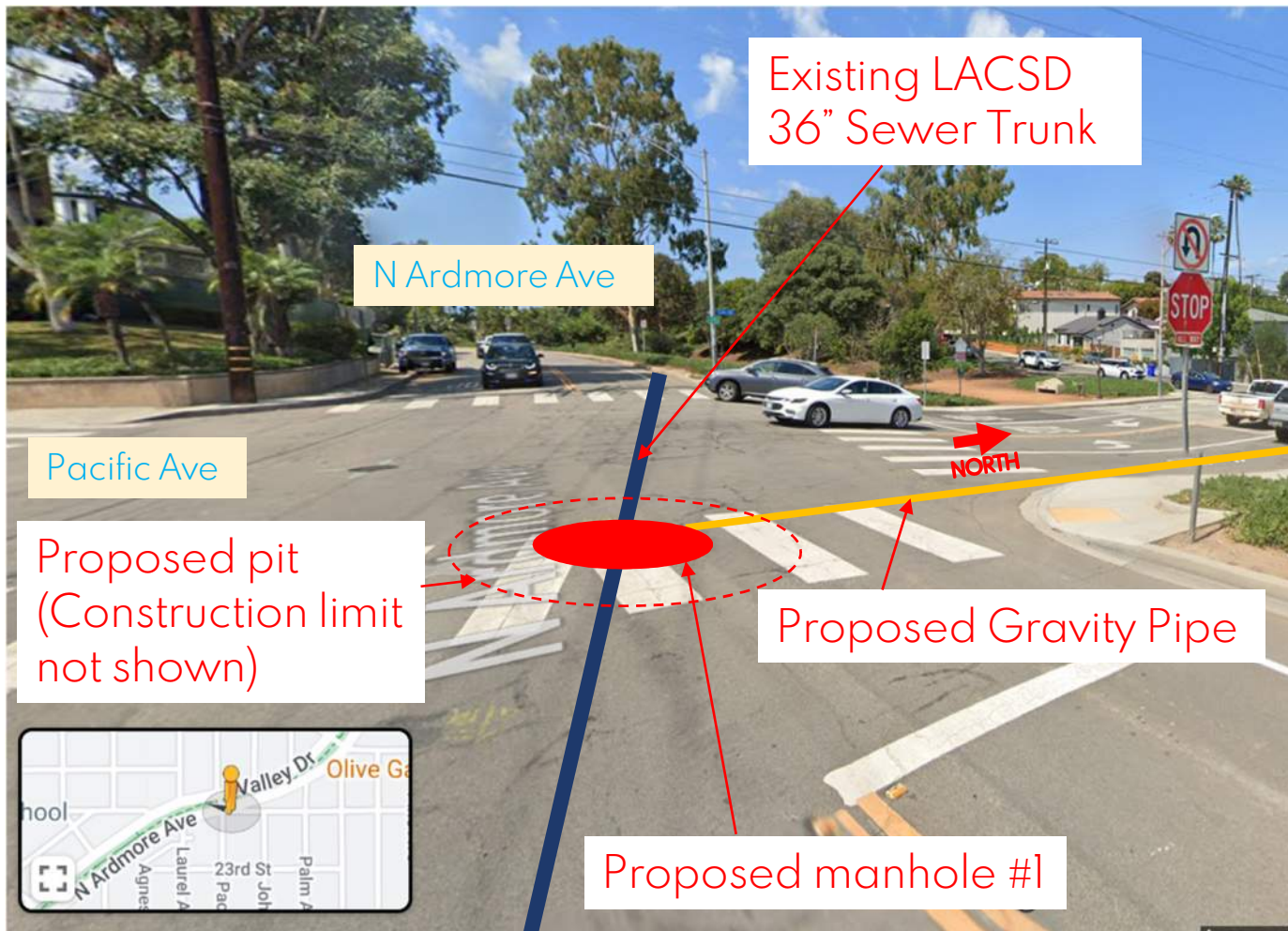
Proposed Gravity Line - Plan and Profile



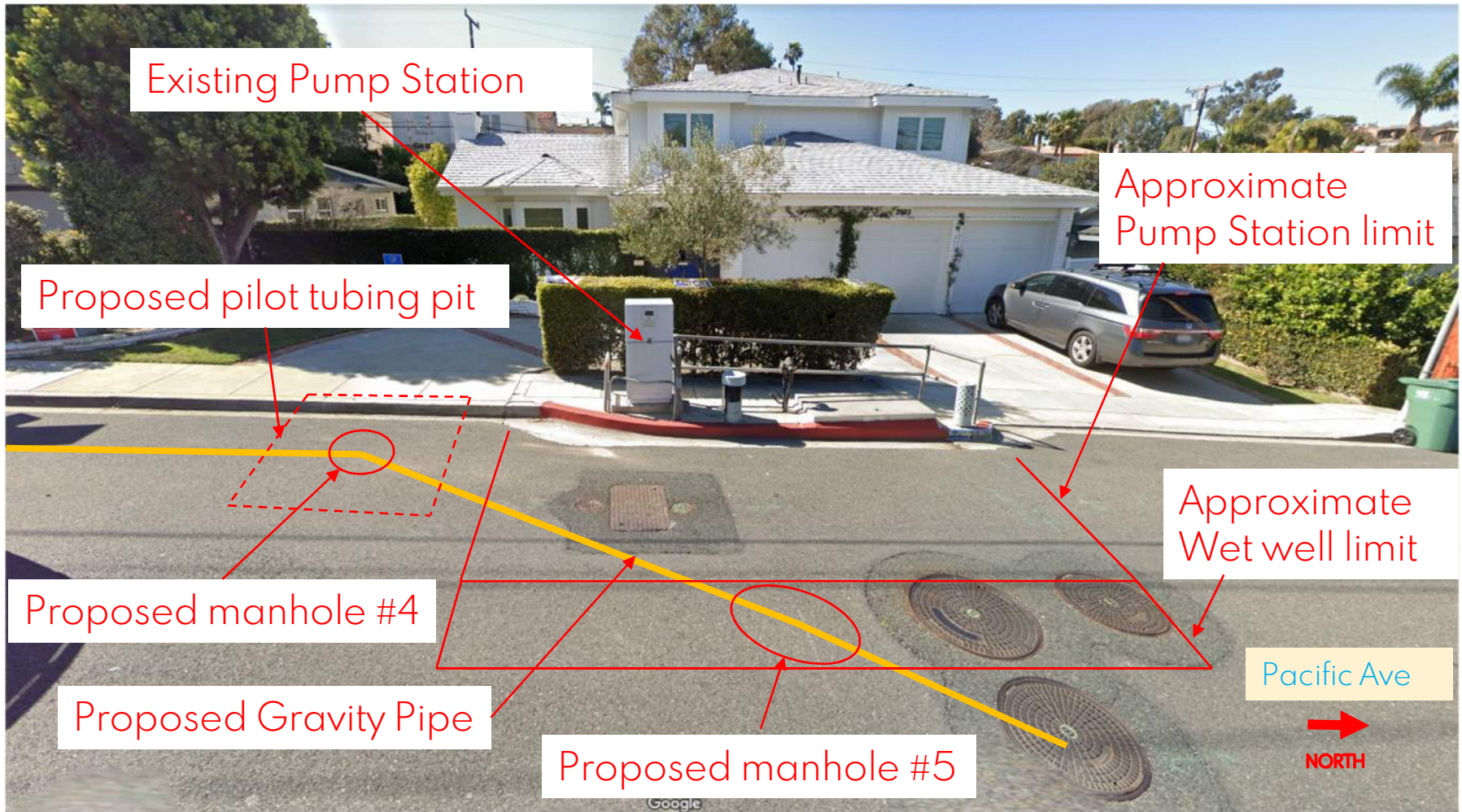
Proposed Gravity Line - Plan and Profile



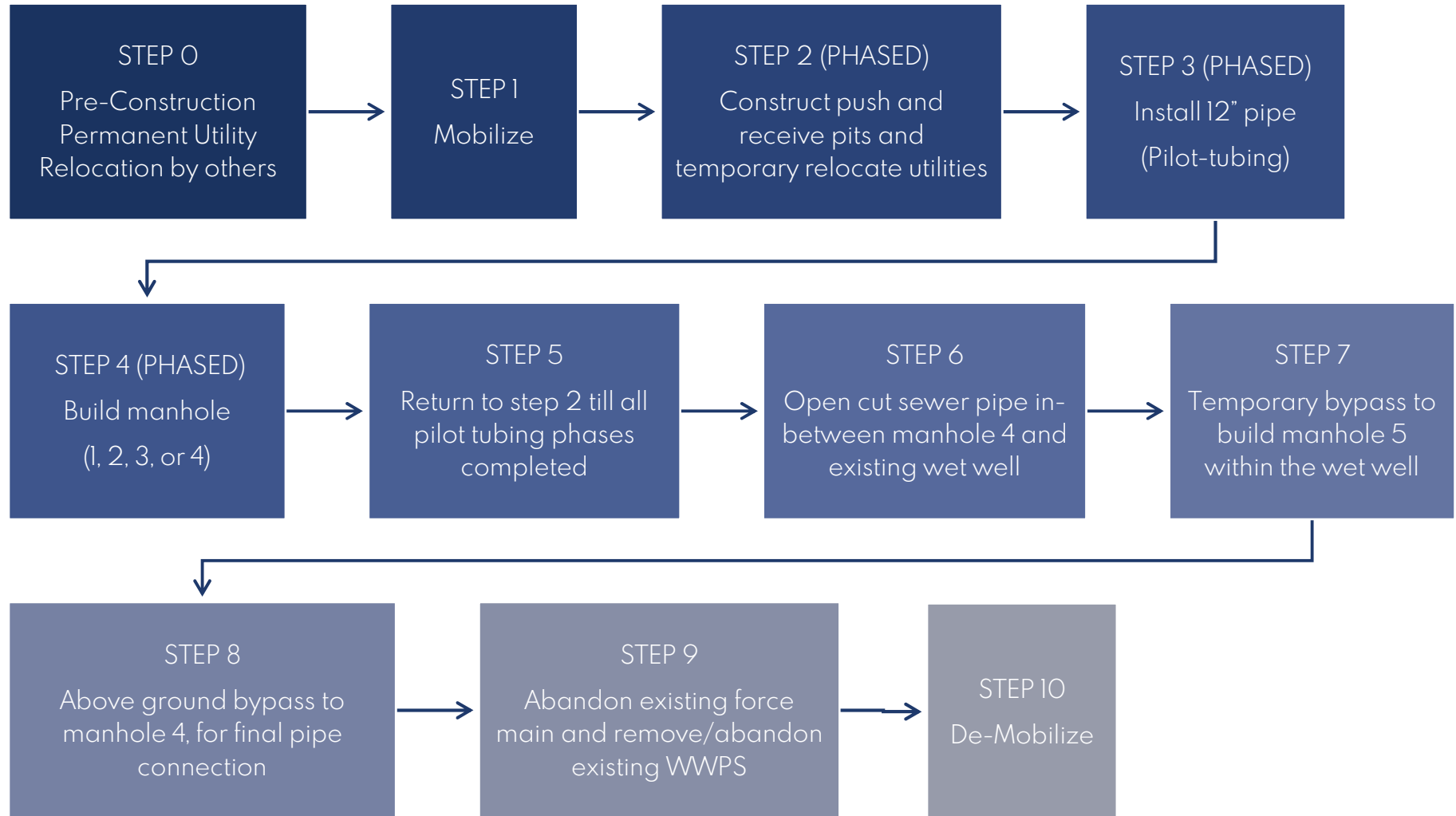
Proposed Gravity Line – Manhole #1



Proposed Gravity Line – Manhole #4 & 5



Preliminary Construction Sequence



Construction Objectives



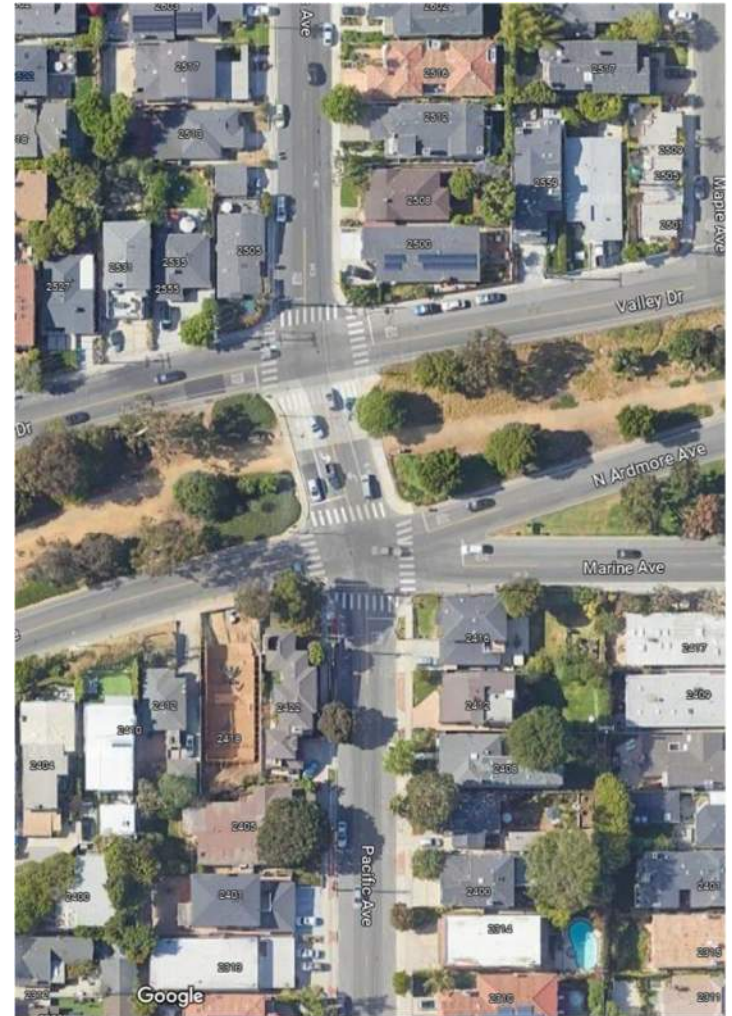
Utility Relocation by SoCal Gas

- Who: SoCal Gas
- What: 2-inch gas line relocation from west to east side of Pacific Ave
- Where: Pacific Ave from Valley Drive to 27th Street
- When: January 2024 (earliest) – March 2024 (latest)
- Why: Interfering utility with gravity line push/pull pits.



Potential Impacts & Mitigations #1

- Construction Noise
 - Excavators
 - Dump trucks
 - Host / Crane
 - Compactor
 - Other typical construction vehicles / equipment
- Mitigations
 - Follow ROW permit and allowed construction hours.



Potential Impacts & Mitigations #2

- Traffic Related
 - No Parking Signage
 - Traffic Pattern Modifications per Project Phase
- Mitigations
 - Follow ROW permit allowed traffic modification hours.
 - Follow Approved Traffic Control Plans



Proposed Gravity Line - Preliminary Schedule



Questions and Answers



Questions? Contact... Marzena Laskowska

E: mlaskowska@manhattanbeach.gov

O: (310) 802-5325



CITY OF
MANHATTAN BEACH

PACIFIC AVE WASTEWATER PUMP STATION (WWPS) CONVERSION TO GRAVITY LINE PROJECT
DECEMBER 20, 2023

23

Note: This PowerPoint presentation is intended solely as a visual aid to an oral staff presentation of an agenda report topic. In the event of any differences between the presentation and the agenda report, the information in the agenda report prevails.

