


**CITY OF MANHATTAN BEACH
DEPARTMENT OF COMMUNITY DEVELOPMENT**

TO: Parking and Public Improvements Commission

FROM: Richard Thompson, Director of Community Development 

BY: Erik Zandvliet, Traffic Engineer

DATE: December 4, 2008

SUBJECT: **Request to Evaluate the Location of an Existing Crosswalk:
25th Street at Alma Avenue and Vista Drive**

RECOMMENDATION:

It is recommended that the Commission approve the current location for the two crosswalks on the south side of 25th Street at Alma Avenue and Vista Drive.

BACKGROUND:

On May 27, 2008, Ms. Kelly Meade, a resident on Alma Avenue, forwarded her concerns about the difficulty in seeing pedestrians entering the crosswalk on the north leg of Alma Avenue at 25th Street. She stated that any vehicles parked near the corner impair view on the narrow street at a school crossing.

This concern was reviewed by the Staff Traffic Committee comprised of Public Works, Police, Fire Personnel, Community Development staff and the Traffic Engineer. The Committee confirmed the visibility restriction and recommended some red curb on the northeast corner to improve driver and pedestrian visibility. On July 16, 2008, Public Works painted the red curb. As soon as the curb was painted, several residents contact the City to complain about the loss of one curb space. The residents also noted that any school children walking along the north side of 25th Street must walk in the street next to parked cars to avoid landscaping in the parkway.

The Staff Traffic Committee reviewed the residents' observations, and it was decided that moving the crosswalk to the south legs of Alma Avenue and Vista Drive made more sense because, 1) cars are not allowed to park on the south side of the street, and 2) there is no landscaping obstruction along the south parkway, and 3) there is already red curb on the corner of Alma Avenue and 25th Street to provide adequate visibility without removal of curb parking.

On August 29, 2008, staff met with the Grand View Elementary Safety Committee and confirmed the School's support for the crosswalk relocation to the south side. The Public Works Department completed the work in September 2008.

It should be noted that the school crosswalks were located on the south side approximately 30 years ago, until a resident petition resulted in switching the crosswalks to the north side and parking to the south side. Neighborhood opposition to this condition again surfaced, resulting in the curb parking reverting back to the north side but maintaining the north side crosswalks.

DISCUSSION:

The California Vehicle Code Section 275 defines a crosswalk as:

1. That portion of a roadway included within the prolongation or connection of the boundary lines of sidewalks at (an) intersection where the intersecting roadways meet at approximately right angles, except the prolongation of such lines from an alley across a street.
2. Any portion of a roadway distinctly indicated for pedestrian crossing by lines or other markings on the surface.

Notwithstanding the foregoing provisions of this section, there shall not be a crosswalk where local authorities have placed signs indicating no crossing.

The primary purpose of a painted crosswalk is to encourage pedestrians to cross at the optimum location by providing positive guidance and control and/or where a recommended crossing may not be obvious to the pedestrian.

25th Street is a local east-west street that provides access to adjacent homes and acts as supplementary circulation between the west gate at Grand View School and Alma Avenue. 25th Street intersects Alma Avenue on the west end and terminates at the west gate of Grand View Elementary School at Vista Drive to the east. 25th Street continues to the west of Alma Avenue as a walk street. The north side of 25th Street has some landscaping that prevents easy pedestrian access along the parkway. There is grass along the parkway on the south side. Parking is allowed on the north side of 25th Street only.



25th Street at Vista Drive Looking Westbound (Current Xwalk on South Side)

Alma Avenue is a local north-south street that serves as local access to residences between Rosecrans Avenue to the north and Marine Avenue to the south. Parking is allowed on the east side of Alma Avenue only.

Vista Drive is a local one-way north-south street that provides access to residences between Rosecrans Avenue and Marine Avenue. Parking is prohibited along Vista Drive, except for diagonal parking along the east side adjacent to Grand View Elementary School near 25th Street. The land use in the study area is residential single and multi-family homes. All streets in the area have low traffic volumes. Most streets provide one travel lane when cars are parked along the curb.

Both intersections on 25th Street are controlled by stop signs on 25th Street only. There are currently painted school crosswalks on the south legs of both intersections. These crosswalks are designated as Suggested Routes to School for students living west of the school and connect to the school crosswalk on Highland Avenue at 25th Street. The crosswalks experience light to pedestrian usage on school days, and are also used by residents that walk along the walk street. There are no sidewalks or curb ramps on nearby streets, and few curbs are constructed. The northwest and southwest legs of 25th Street at Vista Drive have a driveway and parking pad respectively in the corner radii.

The traffic collision history between January 1, 2004 and March 31, 2008 was analyzed for the subject area. There have been no reported pedestrian or vehicular collisions at or near the intersections in the 4-¼ year period.

A radar speed survey was conducted on Alma Avenue between October 29 and October 31, 2008 by an unmarked speed trailer. A statistical summary of the recorded speeds shown below confirms that prevailing speeds on Alma Avenue are below normal for a local street in a residential area.

Average Speed	14 mph
85 th Percentile Speed	16 mph
10-mile Pace Speed	11 to 20 mph
Maximum speed observed	27 mph
Number of Vehicles	829

The Traffic Engineer evaluated the need for additional stop signs at the two intersections and found that multi-way stop signs could be considered at Vista Drive and 25th Street due to restricted visibility and proximity to the school. However, a multi-way stop sign would not be warranted at Alma Avenue and 25th Street due to the very low approach volumes and sufficient sight distance. It should be cautioned that a stop sign at an intersection with low side street traffic volumes often causes unnecessary delay and noise, increased rear-end collision potential and disregard for stop signs on other streets at locations where there is no apparent reason to stop. An unwarranted stop sign would likely be ignored by many drivers, which would actually decrease pedestrian safety.

A stop sign would not be expected to reduce vehicle speeds on Alma Avenue or Vista Drive, since prevailing speeds are below normal for residential streets. In fact, additional stop signs would cause additional delay to motorists, causing some drivers to accelerate faster to make up for lost time. A stop sign on Vista Drive could also slightly increase traffic volume on 25th Street because it would encourage more turning movements.

In comparing the location of the two crosswalks, the Staff Traffic Committee recognized that there are some advantages and disadvantages with the pedestrian path on the north or south sides of 25th Street. This comparison is summarized below:

PEDESTRIAN PATH

SOUTH SIDE	NORTH SIDE
No Parking improves visibility at Alma Ave.	Parked cars reduce driver visibility at Alma Ave.
Existing building close to corner restricts visibility at Vista Dr.	Better visibility at Vista Dr. due to one-way approach.
No landscaping to restrict pedestrian path in parkway.	Existing landscaping in parkway forces pedestrians into street.
No parking allows continuous pedestrian path.	Parked cars impairs access along street.
Pedestrians can be readily observed walking along street.	View of pedestrians may be obscured by parked cars.
Vehicle in parking pad on southwest corner of Vista Dr./25 th St. may obstruct view or path	Vehicle parked in driveway on northwest corner of Vista Dr./25 th St. may obstruct view or path.
Empty parking pad at Vista Dr./25 th St. provides pedestrian refuge at corner.	Existing driveway at Vista Dr./25 th St. provides pedestrian refuge at corner.
Crosswalk at Vista Dr. aligns with HC space path.	HC parking stall blocks pedestrian path from crosswalk on north leg, if full.
No loss in curb parking required.	Parking close to crosswalk should be prohibited to improve driver visibility.

Pedestrians are generally encouraged to use the walk streets where possible since there is less conflict with vehicles, and walk streets connect directly to The Strand. Marked crosswalks provide both positive guidance between walk street segments and raise driver awareness to locations with higher pedestrian concentrations. The walk street at 25th Street is centrally aligned, so a crosswalk to either the northeast or southeast corner of Alma Avenue would be approximately the same length. While it is legal to cross to either corner pursuant to the Vehicle Code, it may not readily apparent to the pedestrian which path is preferred. Therefore, the marked crosswalk identifies a single path with the best and safest crossing conditions.

Based on the above conditions, the Traffic Engineer believes the currently marked crosswalks are located in the optimum locations given the existing conditions on 25th Street. The south alignment has fewer pedestrian obstructions and greater OVERALL visibility for both drivers and pedestrians.

CONCLUSION:

Based on the above analysis, the current location for the two crosswalks on the south side of 25th Street at Alma Avenue and Vista Drive is recommended.

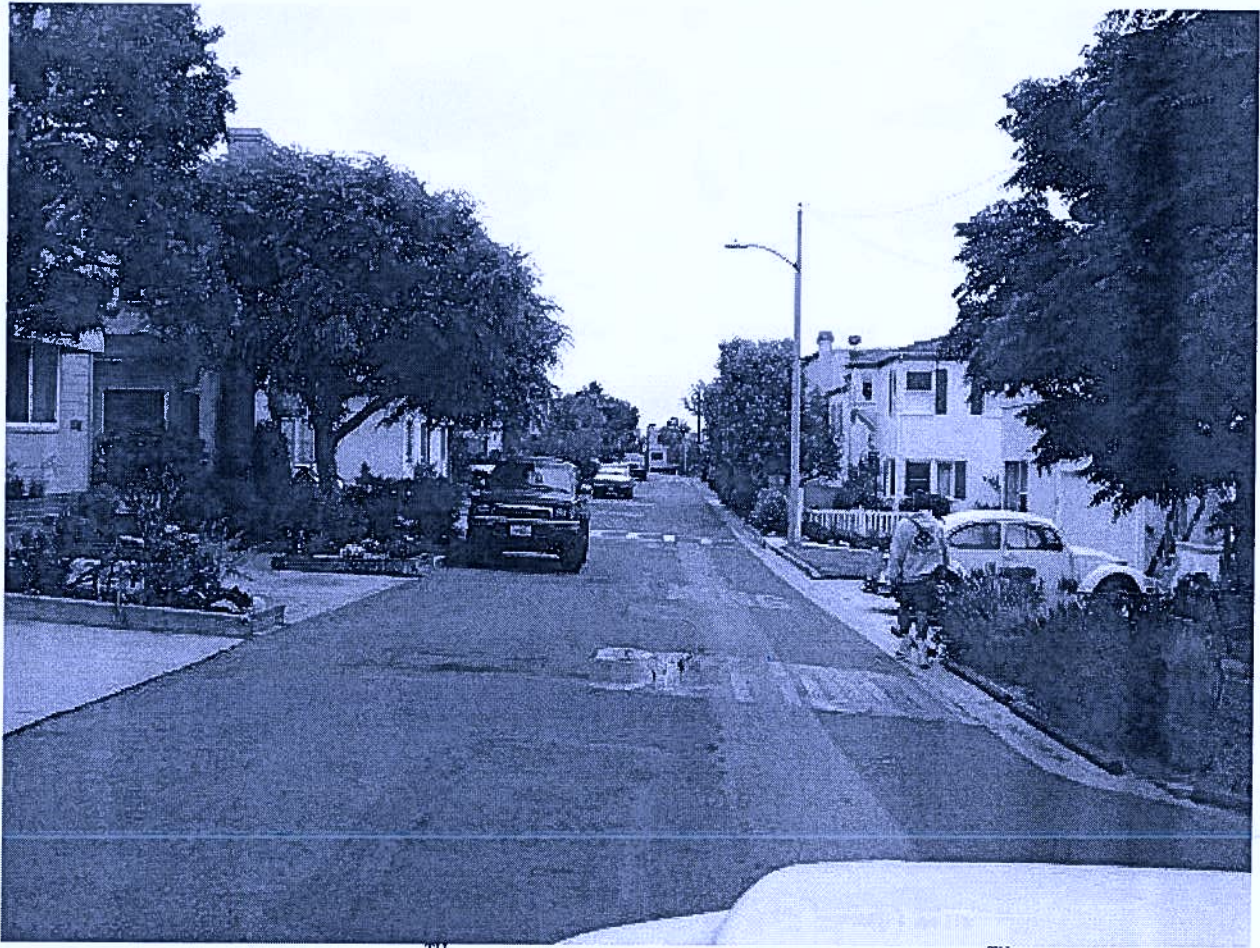
- Attachments: Site Photos
 Aerial Photo - 2007
 Correspondence
 Public Notice
 Previous Work Orders



ALMA AVENUE AT 25TH STREET LOOKING NORTHBOUND (XWALK ON NORTH SIDE)



ALMA AVENUE AT 25TH STREET LOOKING SOUTHBOUND (NORTH XWALK BEFORE RED CURB)



ALMA AVENUE AT 25TH STREET LOOKING SOUTHBOUND FROM 25TH PLACE

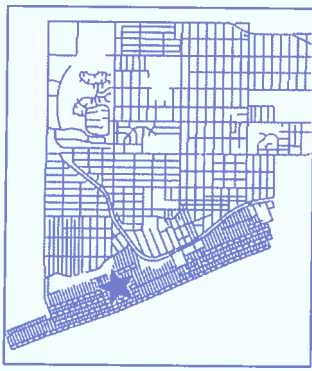


25TH STREET AT ALMA AVENUE LOOKING EAST (1970'S)

Alma Ave at 25th St - Crosswalk



This map is a user-generated static output from the "MB GIS Info" Intranet mapping site and is for general reference only. Data layers that appear on this map may or may not be accurate, current, or otherwise reliable.



Legend

- Addresses
- Parcels
- 2006 4in color
- Basemap
- BEACH
- BLOCK
- DEADEND
- PARK
- PIER
- PRIVATE STREET
- SCHOOL STREET
- STREET
- WALK STREET

A Scale: 1:416

From: kellymeade@aol.com
Sent: Monday, May 26, 2008 4:44 PM
To: Ana Stevenson
Subject: School Crosswalk on Alma Avenue
Hi Ana,

My name is Kelly and I wanted to point out an unsafe School Crosswalk on the corner of Alma Avenue and 25th street.

Cars heading southbound on Alma cannot see a pedestrian until the person is well over halfway into the crosswalk. A driver heading southbound does not have enough time to stop because of two things:

1. Cars are allowed to park near the School crosswalk
2. Parked cars make Alma Avenue a one lane street at this location making the blind spot even more serious than a two lane street.

Cars parked near this school crosswalk create unsafe conditions.

A pedestrian needs to be in the middle of the street or in well over 50% of the crosswalk before a car heading southbound can see that person walking. Since there are cars parked directly in front of the crosswalk and since Alma Avenue is pretty much a one lane street (only allowing one car to go by at a time in most areas on this street) it is very dangerous for someone to cross the street in this school crosswalk.

What worries me is that most elementary children are much smaller than I am (the average 10 year old boy is about 4 1/2 feet tall and most children that go to Grandview are a lot smaller than that). You cannot even see me in the crosswalk (please see attached pictures). I used a flag pole to show the average height of a 10 year old...I don't know that this helps at all, but where my hand is holding the pole is 4 1/2 ft high, that would be a tall elementary school child.

Grandview is 100 ft. east of this school crosswalk.

I would prefer to remain anonymous for this request.

Please see photos attached.

I thank you in advance for your time and concern with this matter and look forward to your response.

Many thanks,
Kelly Meade
Alma Avenue Resident

Stay informed, get connected and more [with AOL on your phone.](#)



**EVALUATE THE LOCATION OF AN EXISTING CROSSWALK
AT 25TH STREET AND ALMA AVENUE**

PARKING AND PUBLIC IMPROVEMENTS COMMISSION

- PUBLIC HEARING -

The Parking and Public Improvements Commission (PPIC) will conduct a public Hearing to evaluate the location of an existing crosswalk at the intersection of 25th Street and Alma Avenue.

WHEN: December 4, 2008 at 6:30 pm

WHERE: Council Chambers (1400 Highland Avenue)

Residents are encouraged to attend and participate. The Staff Report will be available at www.citymb.info on November 26 after 5 pm.

For additional information, please call Esteban Danna at (310) 802-5514 or email at edanna@citymb.info



CITY OF MANHATTAN BEACH
PUBLIC WORKS SERVICE REQUEST

DATE: September 23, 2008

TO: Juan Price, Maintenance Superintendent

FROM: Ana Stevenson, Management Analyst

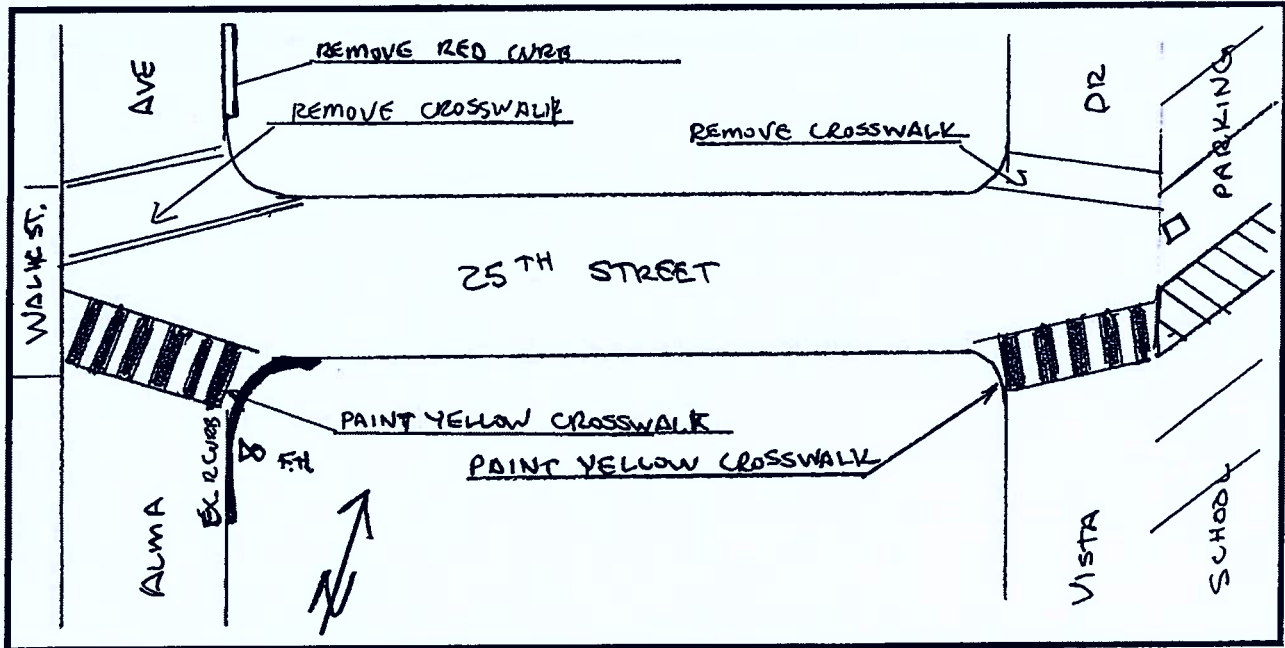
BY: Erik Zandvliet, Traffic Engineer *[Signature]*

SUBJECT: Striping and Sign Modification
 25th Street at Alma Avenue and Vista Drive
 Relocate Crosswalk and Remove Red Curb

DESCRIPTION:

Please remove existing crosswalks and paint new yellow school crosswalks on Alma Avenue at 25th Street and Vista Drive at 25th Street as shown on sketch below. Remove red curb on east side of Alma Avenue just north of 25th Street as shown.

LOCATION MAP / SKETCH:



Approved By	Initial/Date	Completed by	Initial/Date
Director of Community Development			
Public Works Director		Checked:	

Work Order

Status

Recurring

Delete

Show approval log

Work Order 11006 -			
Submitted by	CommDev001	Dept	Planning
Requestor	Ana Stevenson	Phone	310-802-5540
Site	1-Special - Specific Location	Priority 1-5	3 Normal
Building		Safety	<input type="checkbox"/>
Job Site Address	25th St at Alma St & Vista Dr	Special Category?	Standard
Route to	Public Works	Job Type	Traffic Markings
Charge Account	100-18-034- / Traffic Control		
Instructions			
Job Description	Please remove existing crosswalks and paint new yellow school crosswalks on Alma Avenue at 25th Street and Vista Drive at 25th Street as shown on sketch below. Remove red curb on east side of Alma Avenue just north of 25th Street		
<input type="button" value="Add Attachment"/>			
<input type="button" value="Submit"/>			



CITY OF MANHATTAN BEACH

PUBLIC WORKS SERVICE REQUEST

DATE: June 3, 2008

TO: Juan Price, Maintenance Superintendent

FROM: Ana Stevenson, Management Analyst *AS*

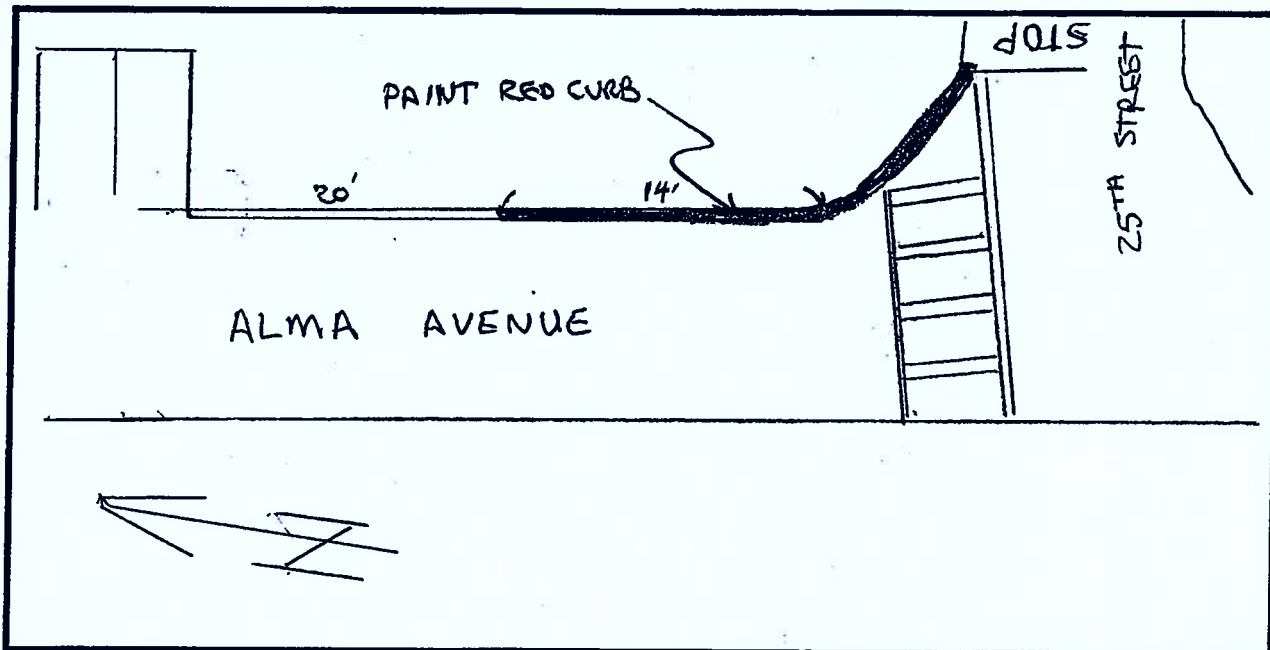
BY: Erik Zandvliet, Traffic Engineer

SUBJECT: Striping and Sign Modification
Alma Avenue at 25th Street
Paint Red Curb

DESCRIPTION:

Please paint 14 feet of red curb (or red stripe) on the east side of Alma Avenue just north of 25th Street for improved intersection circulation and visibility of the crosswalk. Paint intersection curve at northeast corner of Alma Avenue and 25th Street also. See sketch below.

LOCATION MAP / SKETCH:



Approved By	Initial/Date	Completed by	Initial/Date
Director of Community Development			
Public Works Director		Checked:	

Work Order**Status****Recurring****Delete**[Where is this order in the queue?](#)[Show approval log](#)

Work Order 10383 - Submitted: 06/11/08 10:39 AM			
Submitted by	CommDev001	Dept	Planning
Requestor	Ana Stevenson	Phone	310-802-5540
Site	1-Special - Specific Location	Priority 1-5	3 Normal
Building		Safety	<input type="checkbox"/>
Job Site Address	Alma Ave at 25th St	Special Category?	Standard
Route to	Public Works	Job Type	Traffic Markings
Charge Account	100-18-034- / Traffic Control		
Job Description	Please paint 14 feet of red curb (or red stripe) on the east side of Alma Avenue just north of 25th Street for improved intersection circulation and visibility of the crosswalk. Paint intersection curve at northeast corner of Alma Avenue and 25th Street also. See sketch in the hard copy. Hard copy by interdepartmental mail. Thank you.		
<input type="button" value="Add Attachment"/>			
<input type="button" value="Submit"/>			