

Design Concept Imagery Option 1



Design Concept Imagery Option 1



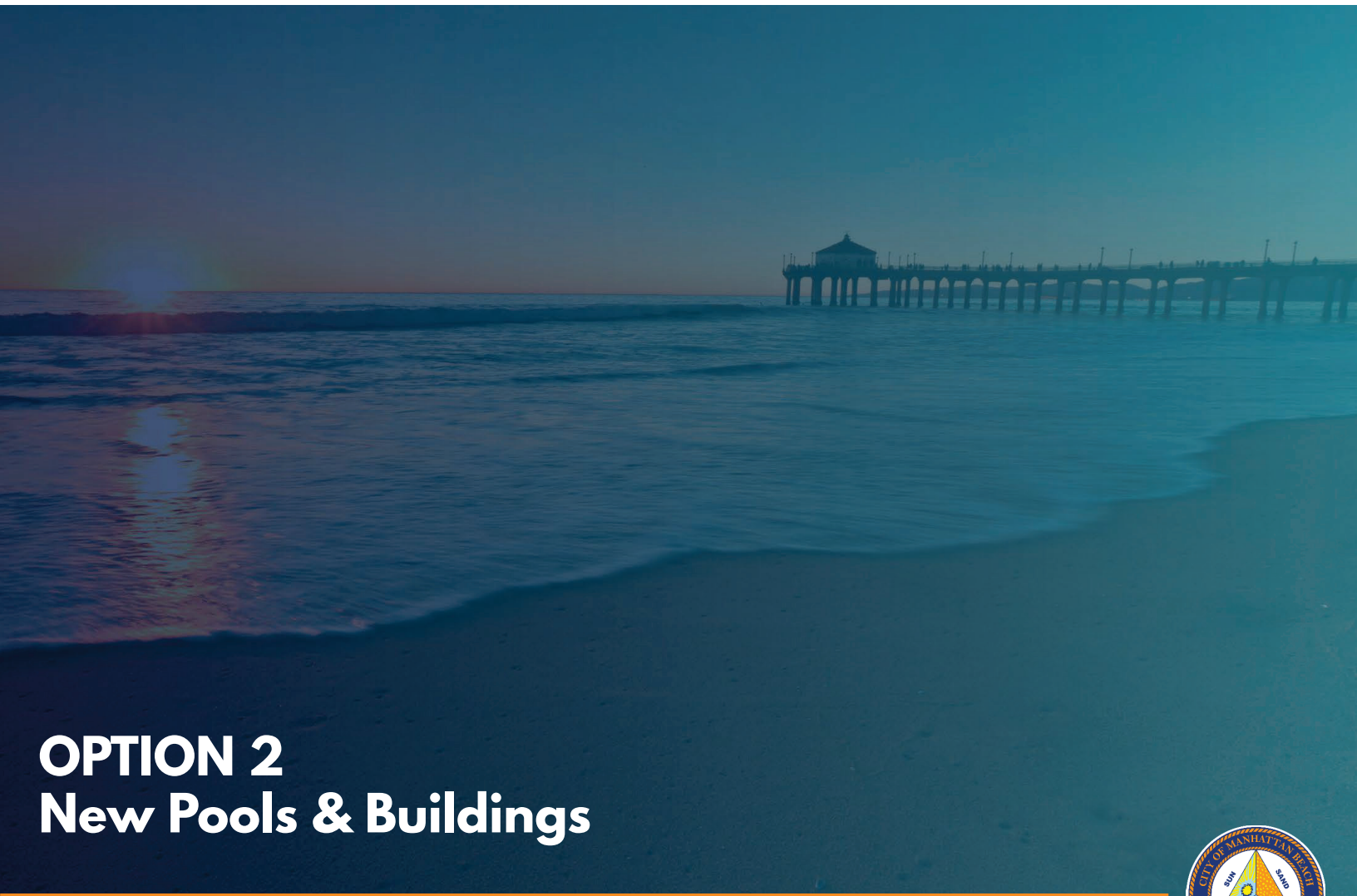
Design Concept Imagery Option 1



Design Concept Imagery Option 1



Note: This PowerPoint presentation is intended solely as a visual aid to an oral staff presentation of an agenda report topic. In the event of any differences between the presentation and the agenda report, the information in the agenda report prevails.



OPTION 2

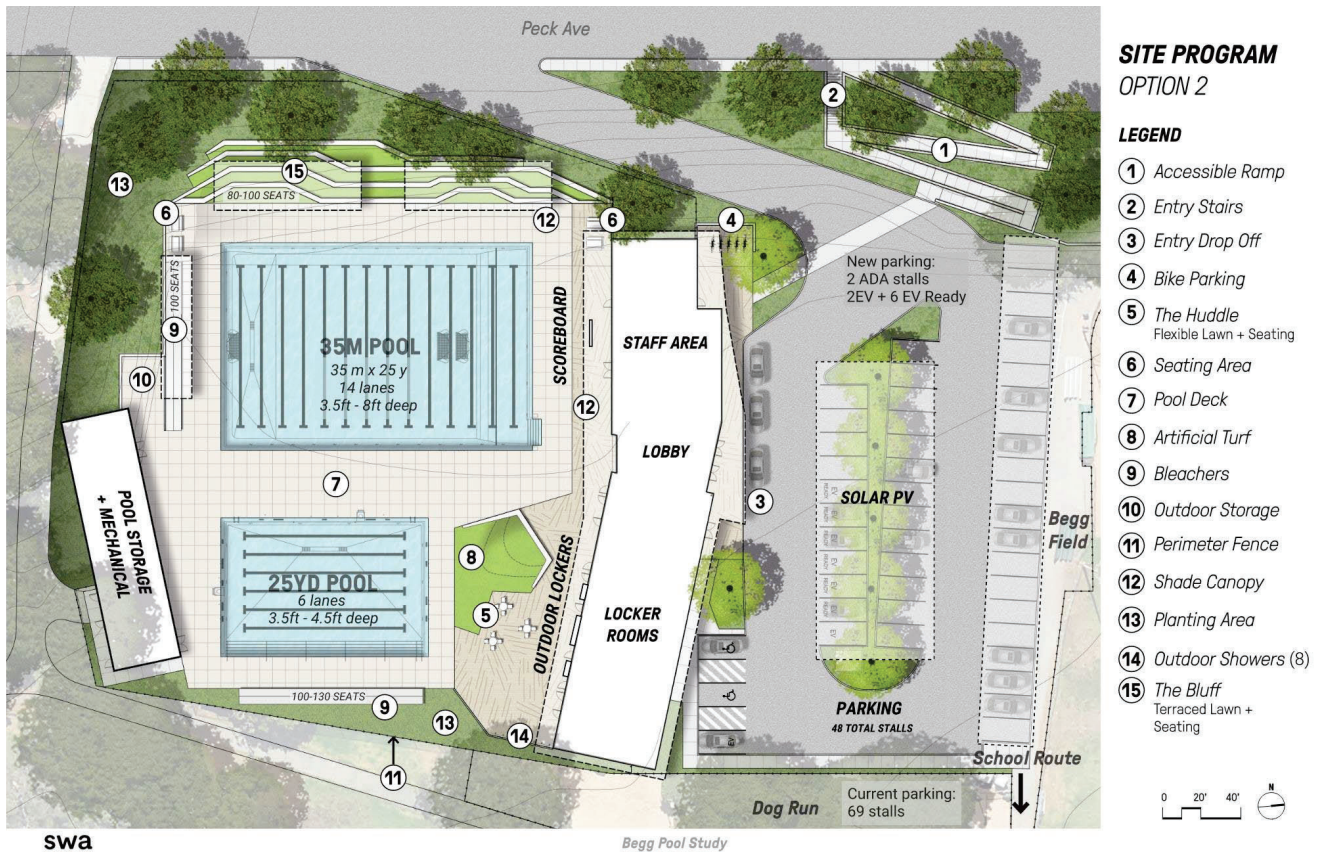
New Pools & Buildings

March 25, 2024



Note: This PowerPoint presentation is intended solely as a visual aid to an oral staff presentation of an agenda report topic. In the event of any differences between the presentation and the agenda report, the information in the agenda report prevails.

Site Plan – Option 2



Note: This PowerPoint presentation is intended solely as a visual aid to an oral staff presentation of an agenda report topic. In the event of any differences between the presentation and the agenda report, the information in the agenda report prevails.

Floor Plan – Option 2

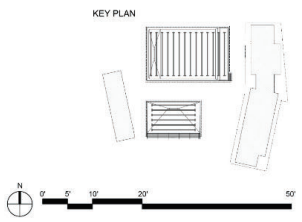
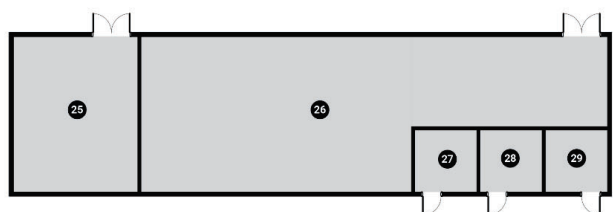
OPTION 2



MAIN BUILDING			
1	LOBBY / CHECK-IN	500	(SF)
2	TRIAGE	100	
3	BREAKROOM	280	
4	OBSERVATION	380	
5	STAFF DRESSING	445	
6	STORAGE	70	
7	OFFICE	325	
8	LIFEGUARD TRAINING ROOM	800	
9	MECHANICAL	280	
10	ELECTRICAL	105	
11	CUSTODIAL	100	
12	DATA	135	
13	WOMEN'S RESTROOM	295	
14	WOMEN'S LOCKERS	655	(SF)
15	WOMEN'S SHOWERS	320	
16	OFFICE #2	105	
17	OFFICE #3	105	
18	FAMILY DRESSING	100	
19	FAMILY DRESSING #2	100	
20	STORAGE #2	140	
21	STORAGE #3	140	
22	MEN'S SHOWERS	320	
23	MEN'S LOCKERS	650	
24	MEN'S RESTROOM	300	
25	DECK SHOWERS		
POOL SUPPORT BUILDING			
25	POOL STORAGE	500	(SF)
26	POOL MECHANICAL	1545	
27	POOL CHEMICAL	100	
28	POOL CHEMICAL #2	100	(SF)
29	POOL CHEMICAL #3	100	

LEGEND

- RESTROOM/LOCKERS
- FACULTY OFFICES
- ADMINISTRATION
- BUILDING SERVICES
- POOL EQUIPMENT
- COMMON SPACE



Note: This PowerPoint presentation is intended solely as a visual aid to an oral staff presentation of an agenda report topic. In the event of any differences between the presentation and the agenda report, the information in the agenda report prevails.

Design Concept Imagery Option 2



Note: This PowerPoint presentation is intended solely as a visual aid to an oral staff presentation of an agenda report topic. In the event of any differences between the presentation and the agenda report, the information in the agenda report prevails.

Design Concept Imagery Option 2



Design Concept Imagery Option 2



Design Concept Imagery Option 2



Design Concept Imagery Option 2



Note: This PowerPoint presentation is intended solely as a visual aid to an oral staff presentation of an agenda report topic. In the event of any differences between the presentation and the agenda report, the information in the agenda report prevails.

Design Concept Imagery Option 2



Design Concept Imagery Option 2



Design Concept Imagery Option 2



Design Concept Imagery Option 2



Design Concept Imagery Option 2



Note: This PowerPoint presentation is intended solely as a visual aid to an oral staff presentation of an agenda report topic. In the event of any differences between the presentation and the agenda report, the information in the agenda report prevails.

Next Steps

- Review of Cost Estimates
- Final Report
- Future Meetings
 - Presentation to City Council: April 16, 2024
 - Presentation to School Board: April 17, 2024



DATE: March 25, 2024

TO:

Members of the Parks and Recreation Commission

FROM:

Mark Leyman, Parks and Recreation Director

SUBJECT:

Parks and Recreation Commission Work Plan for 2024

RECOMMENDATION:

Discuss Parks and Recreation Work Plan items approved by the City Council at the February 13, 2024 City Council work plan meeting.

FISCAL IMPLICATIONS:

Fiscal implications, if any, will be developed on a project-by-project basis and presented to the City Council as necessary.

DISCUSSION:

The City Council met on February 13, 2024, to discuss the City Council work plan and provide direction on items related to the Parks and Recreation Commission. The following topics were approved for continued work by the Parks and Recreation Commission.

- Dog Parks & Community Parkettes – City Council directed the Commission to research the possibility of smaller dog runs in areas of Veteran’s Parkway occupied by ice plant, once the main project is complete; and to notice the neighbors in the area surrounding the Polliwog Park proposed dog run expansion.
- Explore repurposing Pay’n’Play Racquetball Land/Building – City Council directed staff to determine programming costs, revenue projections and long term options (i.e. demolition of building), returning to Council for direction.
- Sand Dune Park Master Plan (Nature Areas & Trails, building) – City Council directed the Commission to research more appealing fencing options surrounding Sand Dune Park, and continue community input to develop an RFP for design and Master Plan.

Preliminary renderings based on community feedback to be reviewed.

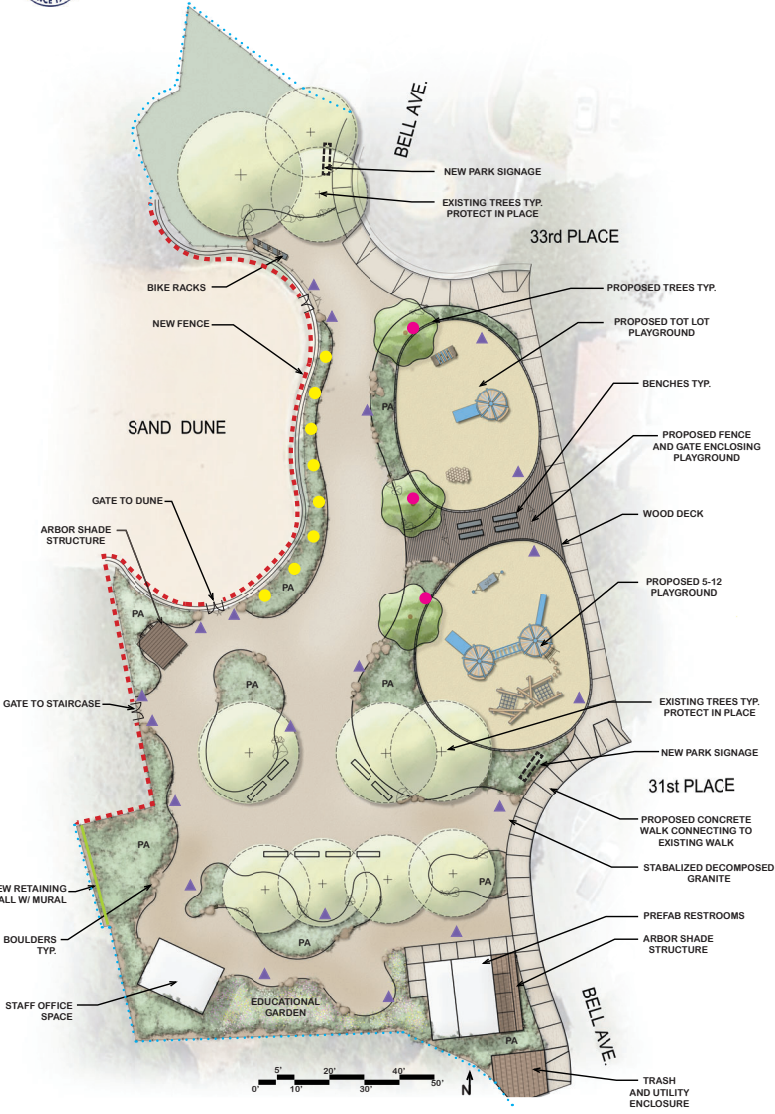
- Explore Community Aquatics Facility - City Council directed the Commission to focus on Begg Pool as the site location and to return with a report on all costs in order to enhance and maintain the space.
- Donation Policy and Programs/LoveMB Discussion – City Council approved a first year allocation of \$50,000 to establish the 501c3. Subcommittee is working on the MOU, bylaws, board members, EIN number and fundraising options.
- Enhanced Holiday Events – (Flags, Memorial Day, Memorial for the Fallen) City Council directed staff to research Memorial Day events, provide cost estimates for flags and develop a concept for a Memorial for the Fallen.

- 2024 Juneteenth Celebration – City Council directed staff to include this work plan item at the April 18, 2023 City Council meeting.



Sand Dune Park - Concept I

PREPARED BY: DAVID VOLZ DESIGN
 151 KALMUS DR, SUITE 402
 COSTA MESA, CA 92626
 714-942-2300
 DV@DVOLZDESIGN.COM
 FEBRUARY 06, 2014



GATE AND FENCE



LIGHTING AND BUILDING



FENCING LEGEND

- - - - - ARTISTIC
- MURAL WALL
- · · · · STANDARD

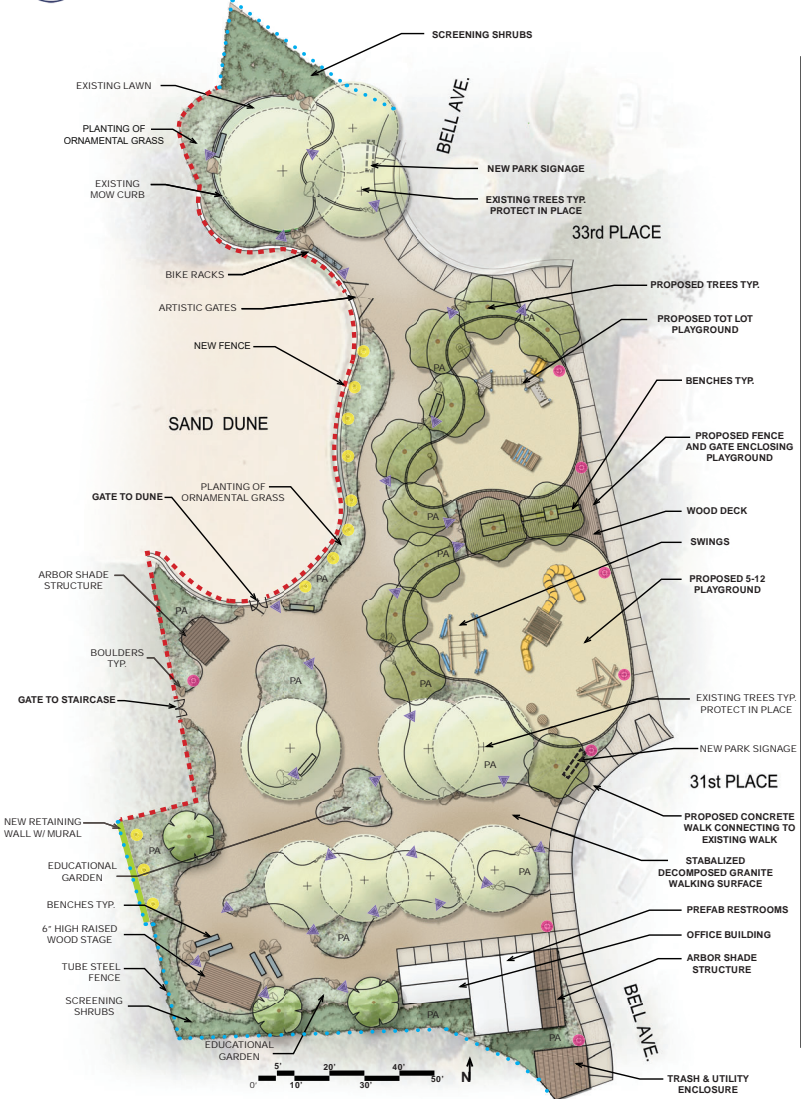
LIGHTING LEGEND

- TREE UPLIGHTS
- ▲ BOLLARD LIGHTS
- UPLIGHTS

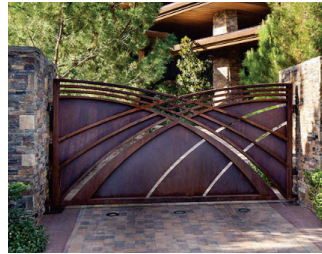


Sand Dune Park - Concept II

PREPARED BY: DAVID VOLZ DESIGN
 151 KALMUS DR, SUITE 408
 COSTA MESA, CA 92626
 714-942-2300
 DV@DVOLZDESIGN.COM
 FEBRUARY 06, 2014



GATE AND FENCE



LIGHTING AND BUILDING



FENCING LEGEND

- ARTISTIC
- MURAL WALL
- ... STANDARD

LIGHTING LEGEND

- POLE LIGHT
- ▲ BOLLARD LIGHT
- UPLIGHT



Sand Dune Park - Proposed Concept I Playground

PREPARED BY: DAVID VOLZ DESIGN
151 KALMUS DR, SUITE 408
COSTA MESA, CA 92626
714-942-2300
DVID@VOLZDESIGN.COM
FEBRUARY 06, 2014

5-12 PLAYGROUND



TOT-LOT





Sand Dune Park - Proposed Concept II Playground

PREPARED BY: DAVID VOLZ DESIGN
151 KALMUS DR, SUITE 408
COSTA MESA, CA 92626
714-942-2300
DVID@VOLZDESIGN.COM
FEBRUARY 06, 2014

5-12 PLAYGROUND



TOT-LOT





Sand Dune Park - Additional Playground Elements

PREPARED BY: DAVID VOLZ DESIGN
151 KALMUS DR, SUITE 402
COSTA MESA, CA 92626
714-942-2300
DVID@VOLZDESIGN.COM
FEBRUARY 06, 2014

MAIN STRUCTURE



1 - Log Tower 3



2 - Log Tangle 2.3



3 - Junior Tower

SWINGS AND NET



4 - Single Bay Basket Swing



5 - Single Bay Belt Swing



6 - Spiderweb

COMPLEMENTARY PIECES



7 - Log Pile 8.1



8 - Log Pile 3.2



9 - Slide Platform 900



Sand Dune Park - South Lawn Improvements

PREPARED BY: DAVID VOLZ DESIGN
151 KALMUS DR, SUITE 408
COSTA MESA, CA 92626
714-942-2300
DVID@VOLZDESIGN.COM
FEBRUARY 06, 2014



N.T.S. ↑

MEETING DATE/SUBCOMMITTEE FOR MEMORIAL FOR THE FALLEN: 02/14//24

P&R STAFF: MARK LEYMAN

P&R COMMISSIONERS: LAURIE MCCARTHY, STEPHEN DORAN

COMMUNITY MEMBER AND VETERAN: GARY McAULAY

PURPOSE OF MEETING: Further complete recommendations based on research done since last meeting. Prepare for P&R Commission meeting 2/26/24 and Council meeting 3/19/24.

RECOMMENDATIONS:

1) Name: "Memorial for the Fallen"

2) Purpose: The Memorial for the Fallen will be established to remember and commemorate those servicemembers who died while on active military duty in service to our nation.

3) Criteria for Inclusion: Those servicemembers who were born, raised, lived in, enlisted from, or were in some other way significantly associated with Manhattan Beach.

3) Application and Process:

- Online one page application form; available for pdf download/written submission or online submission
- Application to include:
 - a. servicemember's name, rank, branch of service, date birth/date for the memorial
 - b. name, address, phone, email, relationship to deceased of recommending party
 - c. documentation from the DOD, branch of military service, or other appropriate historical documentation confirming loss of life while on active duty
 - d. short bio and description of association with Manhattan Beach, including relevant dates when available
- Applications submitted to Parks and Rec Dept. for review and subsequent presentation of qualified applications to P&R Commission
- Short bios, to the extent available, to be provided on each name recommended
- Parks and Rec Commission to make recommendations to City Council
- City Council to have final approval of names
- Initial names to be approved as a group (est. 21 names identified to date)
- Additional names to be added over time on an annual basis
- For further research: Does the application itself act as legal consent to include a name or does consent need to be granted by "next of kin" as legally defined?

4) Location: Civic Center courtyard

- Central and visible to the community
- Provides a somber, dignified, and quieter civic location
- ADA accessible and easily accessible to older community members who represent an important constituency
- Parking is convenient and an elevator is available from the parking structure
- Appropriate for reflection
- Appropriate for honor ceremonies or Memorial Day ceremonies
- Size of space can accommodate a large number of people

5) Recognition of individuals on the memorial:

- Names to be on an individual plaque/bar to enable additions as needed over time
- Name

- Rank
- Branch of service
- Full dates of life and death consistent with Arlington National Cemetery format. (Example: Feb. 2, 1922 – Aug. 15, 1945)

6) Appearance/design of the memorial:

- Parks and Rec Staff to work with Cultural Arts Commission to draft, approve, and issue an RFP for a landscape architect/artist/creative design firm to redesign and reimagine the landscaping in the City Center courtyard area and to develop a proposal for the actual memorial itself.
- RFP to be submitted for City Council consideration.
- Community outreach meetings to be held for landscape and design feedback
- Considerations for design should include:
 - a. Form: statue/sculpture
 - b. Solid granite or other material
 - c. Polished or unpolished surface
 - d. Whether the memorial is a general recognition with individual names on it, or whether there is a general memorial accompanied by smaller, separate pillar/stone/obelisks for each branch of service with related servicemember's names on them.
 - e. Words on memorial
 - f. Words on the plaque/bar recognizing each fallen servicemember (e.g. name, rank, branch of service, dates of birth and death)
 - g. Graphics or symbols used on memorial (e.g. flag, eagle, star, branch of service symbols)
 - h. Ease of addition of additional names in the future
- Separate non-intrusive sign/plaque to explain memorial with a single QR code link to all bios, including servicemember's association with Manhattan Beach

7) Flags:

- Approx. 71 flags owned by Manhattan Beach will be flown around the City, as is done for other patriotic holidays
- It is recommended that the flags be flown at least 2 days either side of Memorial Day
- The presence of a permanent flag at the site will be dependent on the final artistic concept approved
- Additional flags may be added to the site for Memorial Day

8) Examples of how other cities commemorate Memorial Day:

- Ceremonies (e.g. music, speakers, pledge of allegiance, readings, chaplains, flags, gun salutes, playing Taps, military and/or civilian flyovers, skydivers, length of ceremony about 30-60 minutes)
- Invitees (e.g. public, families of the fallen, veterans, VFW groups, American Legion groups, local ROTC, City officials, local City dignitaries, local senior military official, other elected representatives, local youth groups and Scout troops, staff)
- Speakers and Ceremony Participants (e.g. veterans, City Council mayor or members, local veterans' organizations, ROTC members, chaplain, youth group/Scouts representative, local elected officials, community members)
- Video recordings and posting of the ceremony for the general public/community
- Flags both around town and/or at site
- Parades
- Fairs

- Historic displays
- Historic re-enactments

9) Our Proposed Commemoration:

- Length of ceremony: 45 minutes maximum
- Invitees to include the public, South Bay veterans and ROTC groups, local Boy and Girl Scout troops, City officials and staff, and local senior military official(s)
- Speakers/Participants in Ceremony to include
 - a) the MB Mayor/Councilmembers to emcee and make remarks (5-7 minutes)
 - b) local active duty servicemember(s) invited to speak (5 minutes)
 - c) local veteran to speak or provide a designated reading (3-5 minutes)
 - d) local distinguished community member invited to speak (5 minutes)
 - e) local chaplain or a faith representative on a rotating basis from the MB faith community (3-5 minutes)
 - f) moment of silence (1 minute)
 - g) local youth group participation, which may include Boy/Girl Scout troops or ROTC members, to present colors and/or lead Pledge of Allegiance and retire the colors (5-7 minutes in aggregate)
 - h) small group of local military or MB school musician(s) to play Taps at conclusion and possibly a musical interlude for reflection before and during the ceremony (3-5 minutes in aggregate)
- Needs:
 - a) Podium
 - b) Microphone
 - c) AV Technicians for recording
 - d) Flag stands
 - e) Flags
 - f) Chairs for seniors
 - g) Security