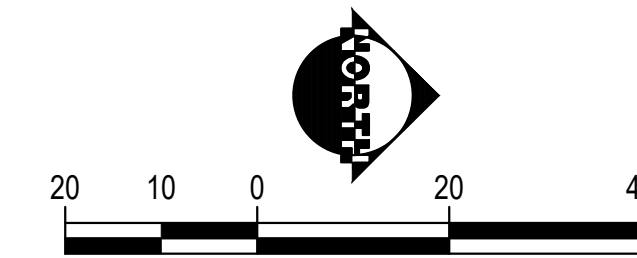
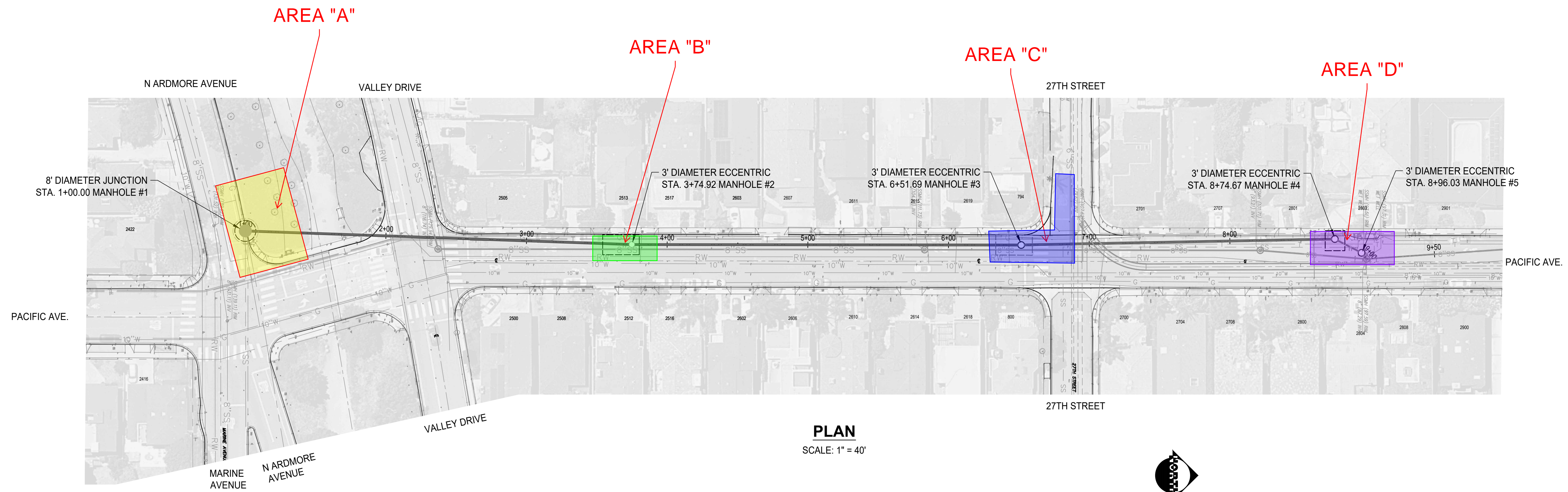
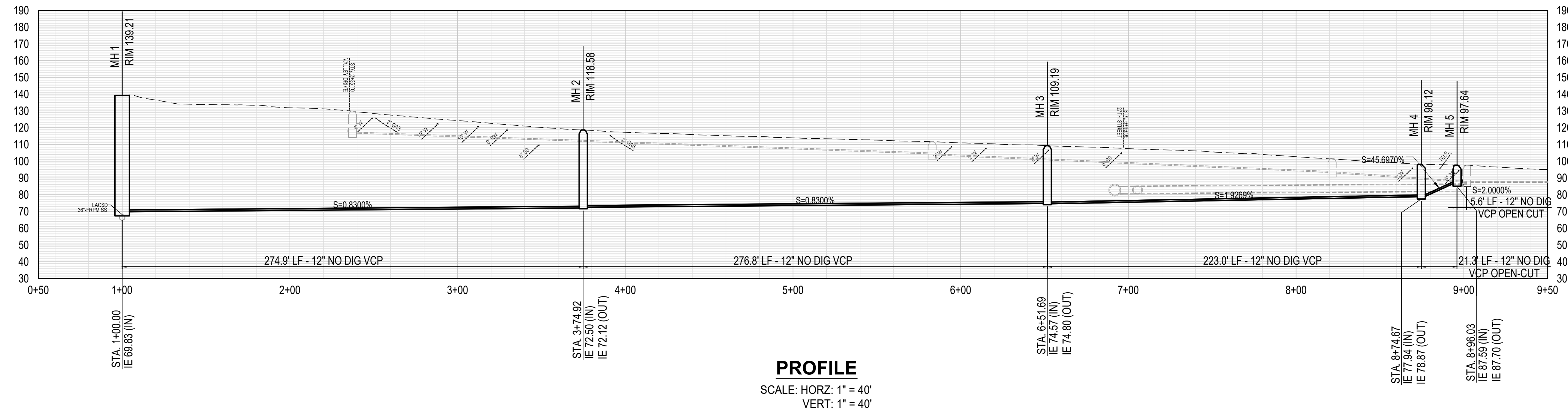


NOT FOR CONSTRUCTION _ PPIC EXHIBIT ONLY

NOTE SHOWN AREAS ARE ONLY APPROXIMATE AND SUBJECT TO CHANGE.



SEE LOS ANGELES COUNTY SANTATION DISTRICTS FOR SPECIAL CONNECTIONS CHARGES (562)908-4288 EXT. 2727

811
Know what's below. Call before you dig.

NO WORK SHALL BE DONE ON THIS SITE UNTIL USA AGENCY IS NOTIFIED OF INTENTION TO GRADE OR EXCAVATE, TWO WORKING DAYS BEFORE YOU DIG.

- SUPPLEMENTAL NOTES:**
- THE CONTRACTOR SHALL LOCATE, VERIFY AND PROTECT ALL EXISTING UNDERGROUND UTILITIES. DAMAGED UTILITIES SHALL BE REPLACED IN KIND AT THE CONTRACTOR'S EXPENSE.
 - DUE TO INDIVIDUAL LOT IMPROVEMENTS, THE EXISTING WATER, SEWER AND/OR GAS LATERALS MAY NOT BE AT THE LOCATIONS SHOWN OR SHOWN IN THEIR ENTIRETY. THE CONTRACTOR SHALL EXERCISE CAUTION WHEN EXCAVATING.
 - THE CONTRACTOR SHALL DETERMINE THE DEPTH OF THE GAS SCE, CABLE, SEWER, STORM DRAIN AND WATER AT ALL INTERSECTIONS AND INTERFERENCES PRIOR TO CONSTRUCTION AND AS NOTED ON PLANS.

ENGINEER/ARCHITECT OF RECORD STAMP

DATE SIGNED _____

PACE
Advanced Water Engineering

17520 Newhope Street, Suite 200
Fountain Valley, CA 92708
P: (714) 481-7300 | www.pacewater.com

REVIEWED BY	DATE

CITY OF MANHATTAN BEACH
PUBLIC WORKS DEPARTMENT - ENGINEERING DIVISION

CITY CAPITAL IMPROVEMENT PROJECT TITLE
12-INCH SEWER PLAN AND PROFILE

NO.	DESCRIPTION	BY	DATE

DESIGNED BY: MARZENA LASKOWSKA
 PROJECT MANAGER: MARZENA LASKOWSKA
 CITY ENGINEER: KATHERINE DOHERTY
 VICE PRESIDENT-UTILITIES DIVISION: DUNCAN LEE

SCALE: AS SHOWN
 SHEET: X OF
 DATE: XX-XX-XX
 PROJECT NO.: S-265
 DRAWING NO.: **XX.X**