

S-265 Pacific Ave Sewer Lift Station Conversion to Gravity Line Project

March 28, 2024 PPIC Meeting



Note: This PowerPoint presentation is intended solely as a visual aid to an oral staff presentation of an agenda report topic. In the event of any differences between the presentation and the agenda report, the information in the agenda report prevails.

Existing - Background & History

- 1950s Pacific Avenue sewer lift station and force main constructed
- 1990s mechanical and electrical upgrades completed
- 2010 Wastewater Master Plan identified sewer lift station for storage capacity and redundancy upgrades
- 2020s Facility now approaching end of useful life.
- 2020 Preliminary Engineering began with Basis of Design Reports for three sewer lift station including Pacific
- 2022 Basis of Design Reports received by City Council including preferred gravity alternative for Pacific
- 2024 Final Design



Existing - Location

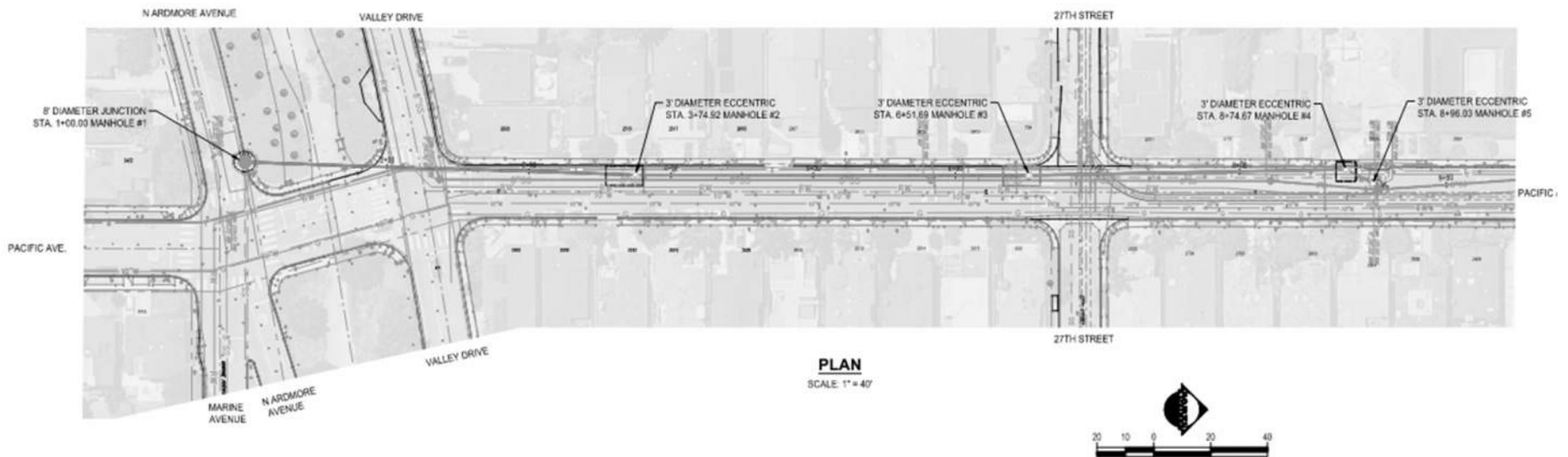


Proposed - Location



Proposed – Scope of Work Plan View

- 900 feet of new 12-inch gravity pipe installed via trenchless technology
- 5 new sewer manholes along Pacific Ave includes a new 70 foot deep junction structure connection to LACSD's 36-inch sewer trunk
- Relocation of conflicting utilities
- Existing pump station - remove portions such as electrical, mechanical, top 6-feet of structure, etc. and abandon below 5 feet of structure, etc.
- Abandon 1,225 feet of existing 6" force main



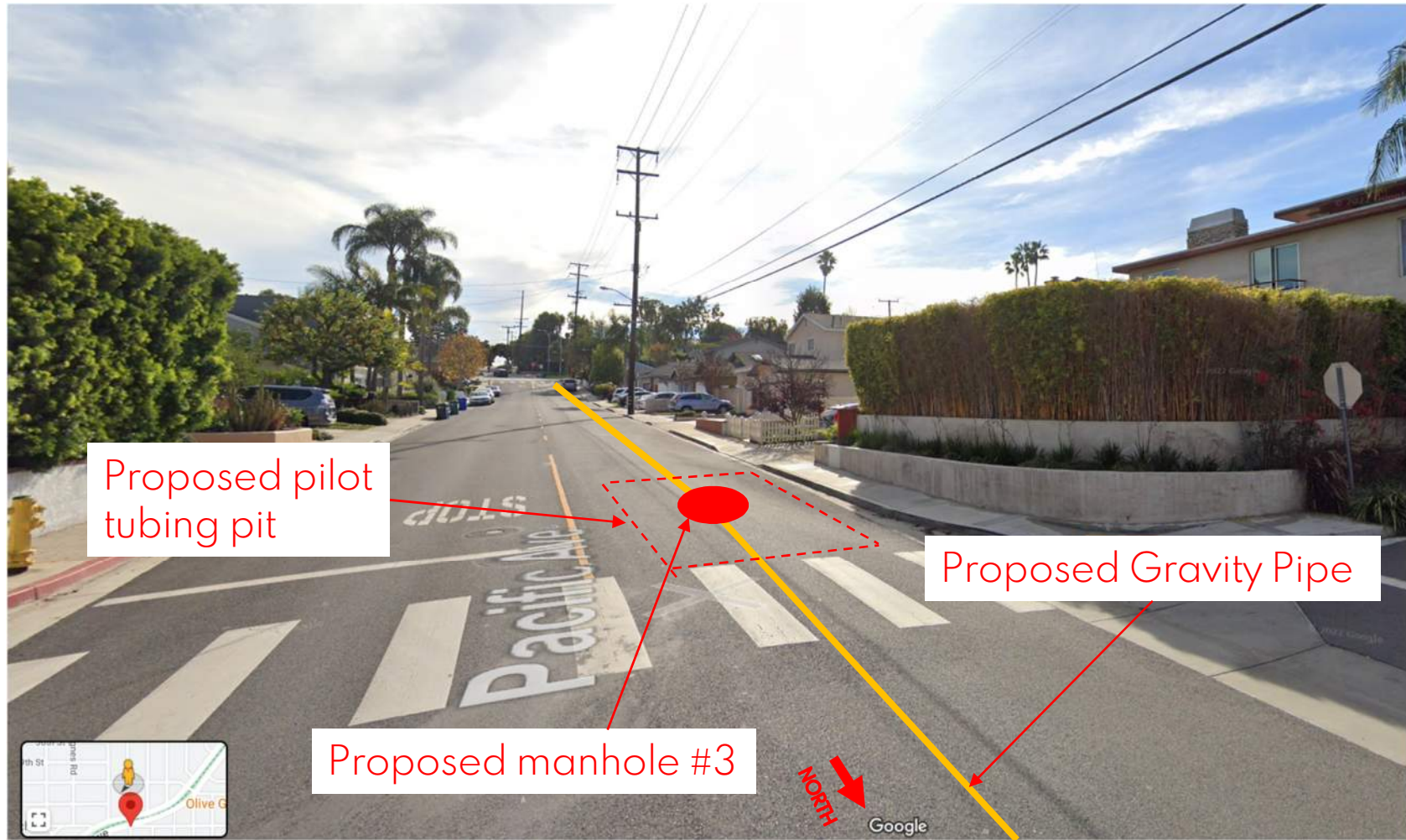
Proposed Gravity Line – Manhole #1



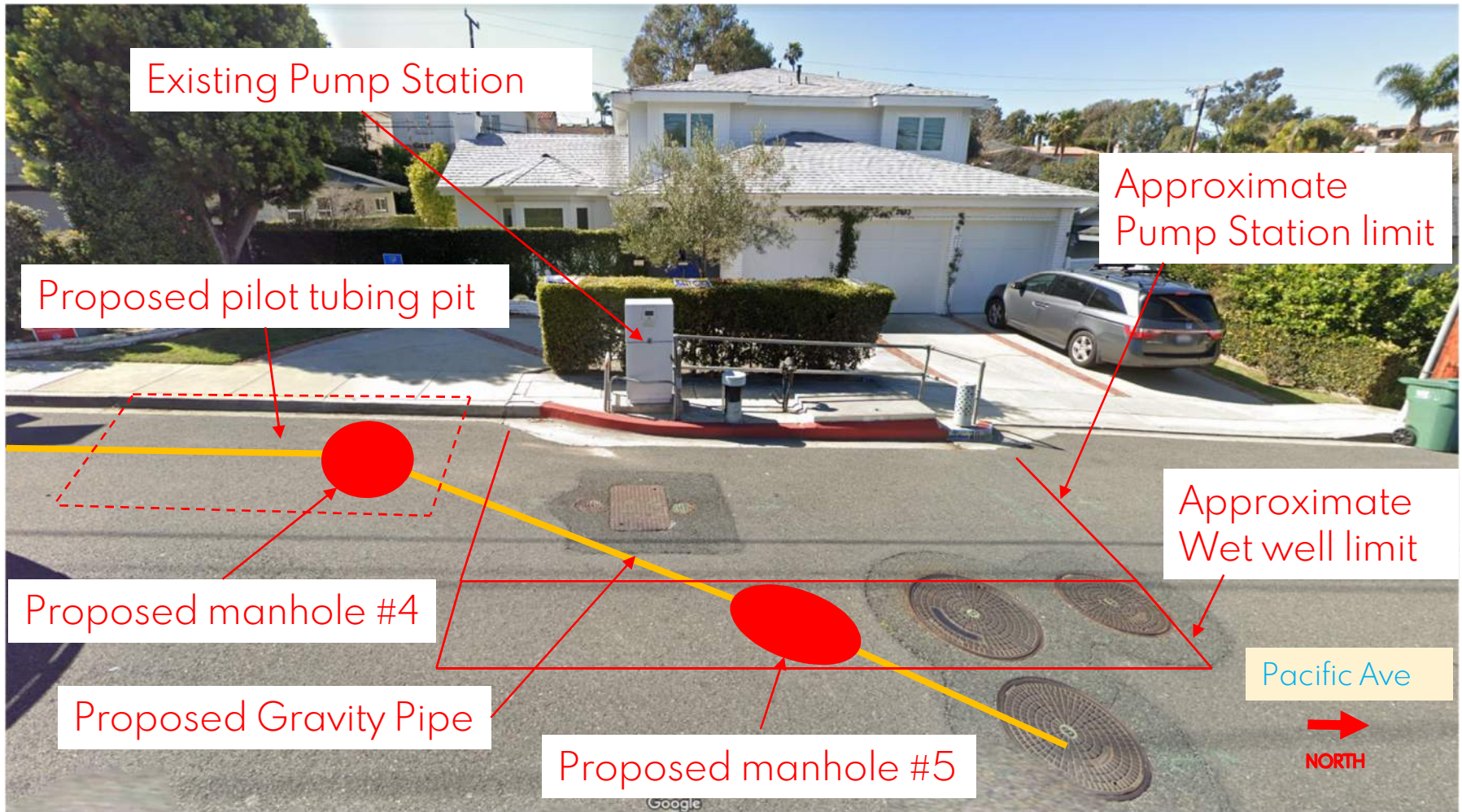
Proposed Gravity Line – Manhole #2



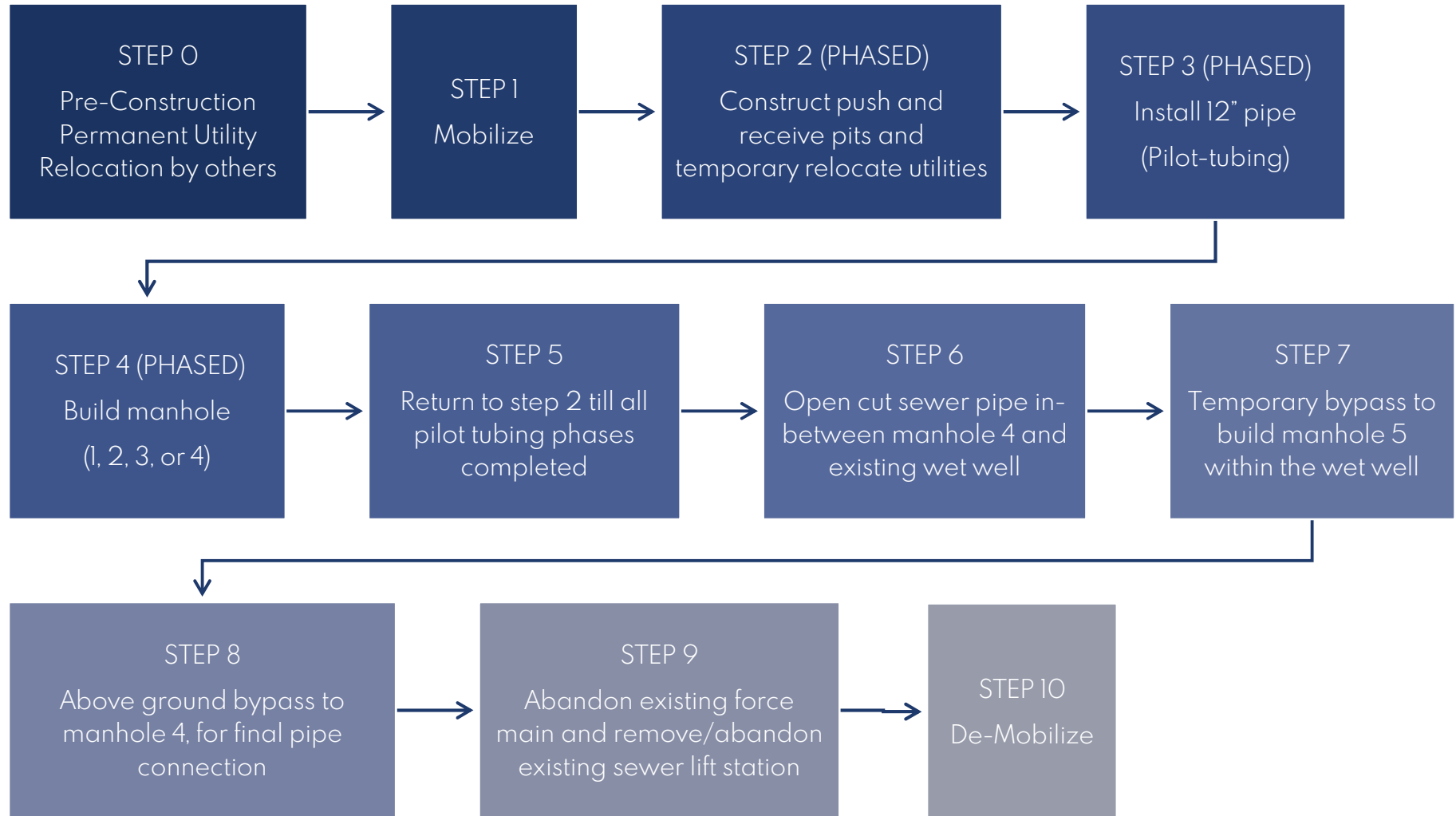
Proposed Gravity Line – Manhole #3



Proposed Gravity Line – Manhole #4 & 5



Preliminary Construction Sequence



Utility Relocation by SoCal Gas #1

- What: SoCal Gas 2-inch gas line relocation from west to east side of Pacific Ave
- Where: Pacific Ave from Valley Drive to 27th Street
- When: Started late February 2024 – ongoing – end April 2024
- Why: Interfering utility with gravity line push/pull pits.



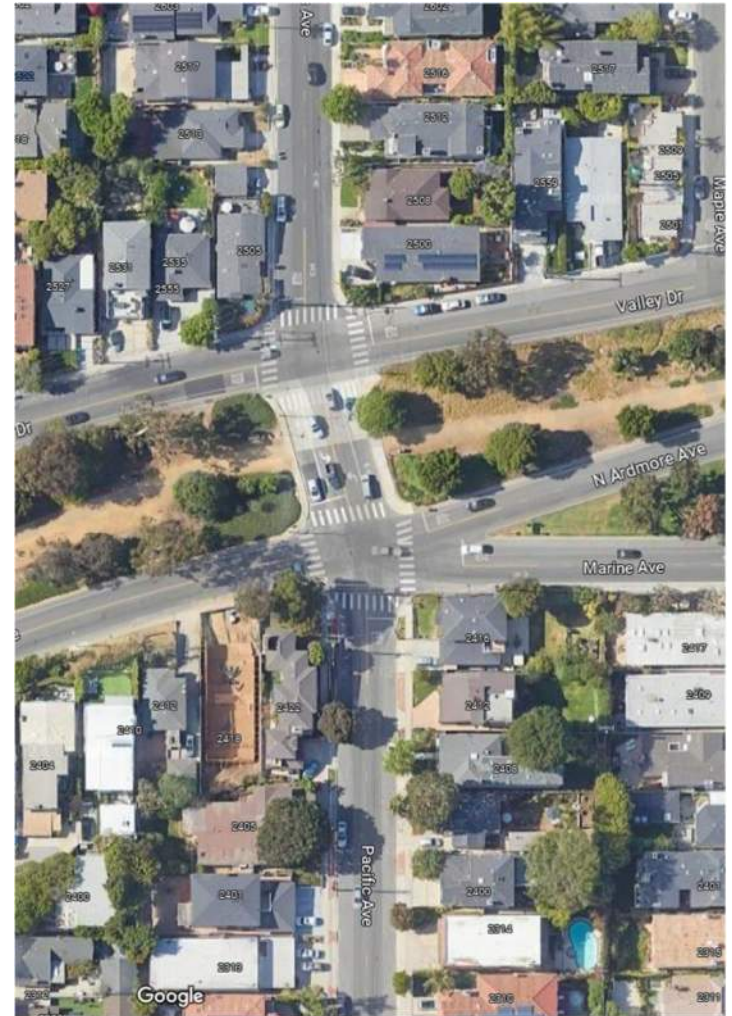
Utility Relocation by SoCal Gas #2

- What: SoCal Gas 4-inch gas line relocation
- Where: North-West corner of Ardmore Ave and Pacific
- When: May 2024 (earliest) – August 2024 (latest)
- Why: Interfering utility with gravity line push/pull pits.



Potential Impacts & Mitigations #1

- Construction Noise
 - Excavators
 - Dump trucks
 - Host / Crane
 - Compactor
 - Other typical construction vehicles / equipment
- Mitigations
 - Follow ROW permit and allowed construction hours.



Potential Impacts & Mitigations #2

- Traffic Related
 - No Parking Signage
 - Driveway Access
 - Traffic Pattern Modifications per Project Phase
- Mitigations
 - Follow ROW permit allowed traffic modification hours.
 - Follow Approved Traffic Control Plans



Proposed Gravity Line - Preliminary Schedule



Questions and Answers



Questions? Contact... Marzena Laskowska

E: mlaskowska@manhattanbeach.gov

O: (310) 802-5325



CITY OF
MANHATTAN BEACH

PACIFIC AVE SEWER LIFT STATION CONVERSION TO GRAVITY LINE PROJECT
MARCH 28, 2024

16

Note: This PowerPoint presentation is intended solely as a visual aid to an oral staff presentation of an agenda report topic. In the event of any differences between the presentation and the agenda report, the information in the agenda report prevails.