

Voorhees Avenue Sewer Lift Station Improvements Project

PPIC Meeting – March 28, 2024



Note: This PowerPoint presentation is intended solely as a visual aid to an oral staff presentation of an agenda report topic. In the event of any differences between the presentation and the agenda report, the information in the agenda report prevails.

Existing – Background & History

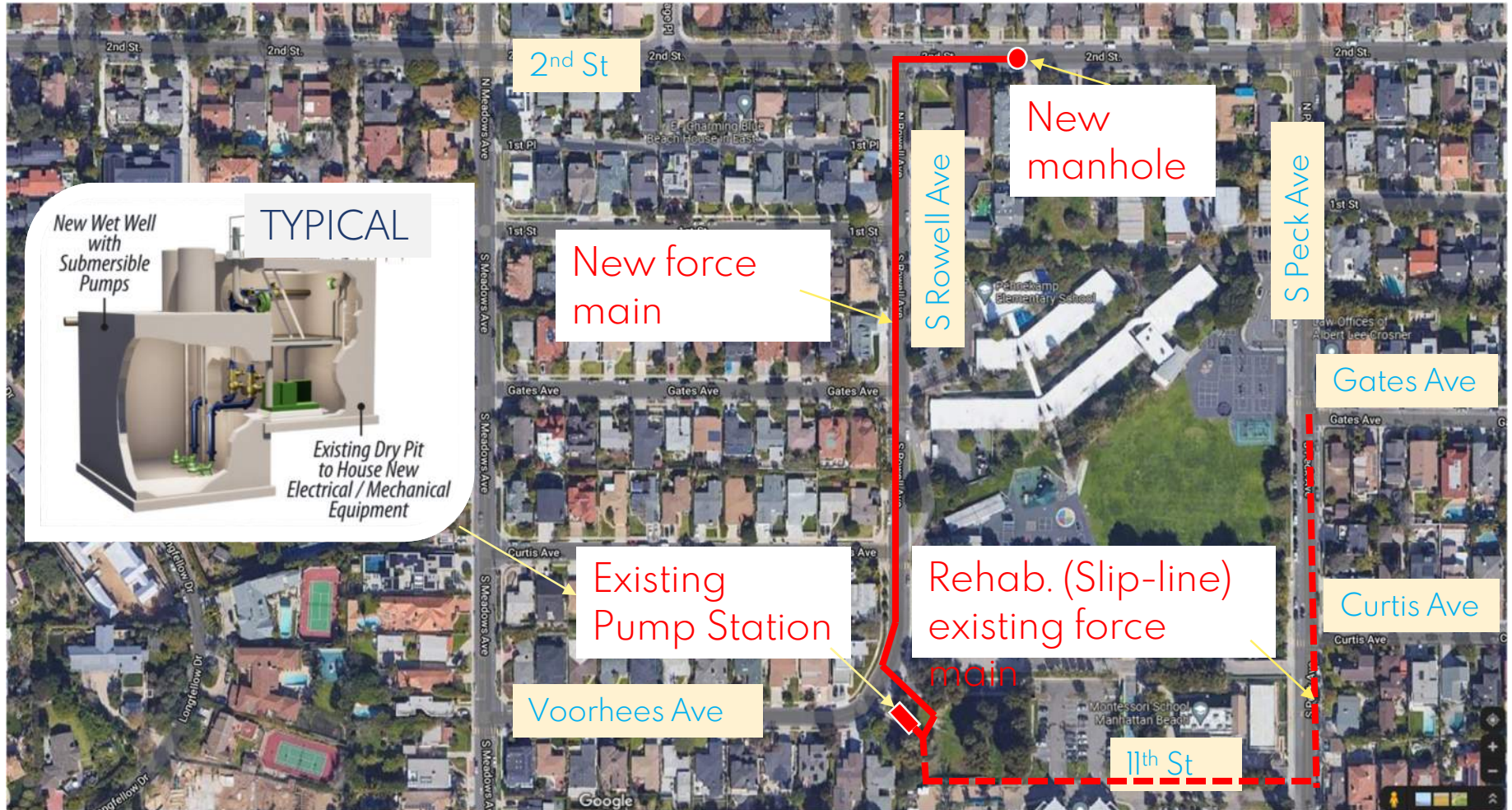
- 1960s Voorhees Ave Sewer Lift Station and force main was constructed
- 1990s Mechanical and electrical upgrades
- 2010 Wastewater Master Plan identified the facility as approaching the end of useful life and this aging system further exasperated by periodic power outages
- 2019 Preliminary Engineering began with Basis of Design Reports for three Sewer Lift Station including Voorhees
- 2022 Basis of Design Reports received by City Council
- 2024 Final Design



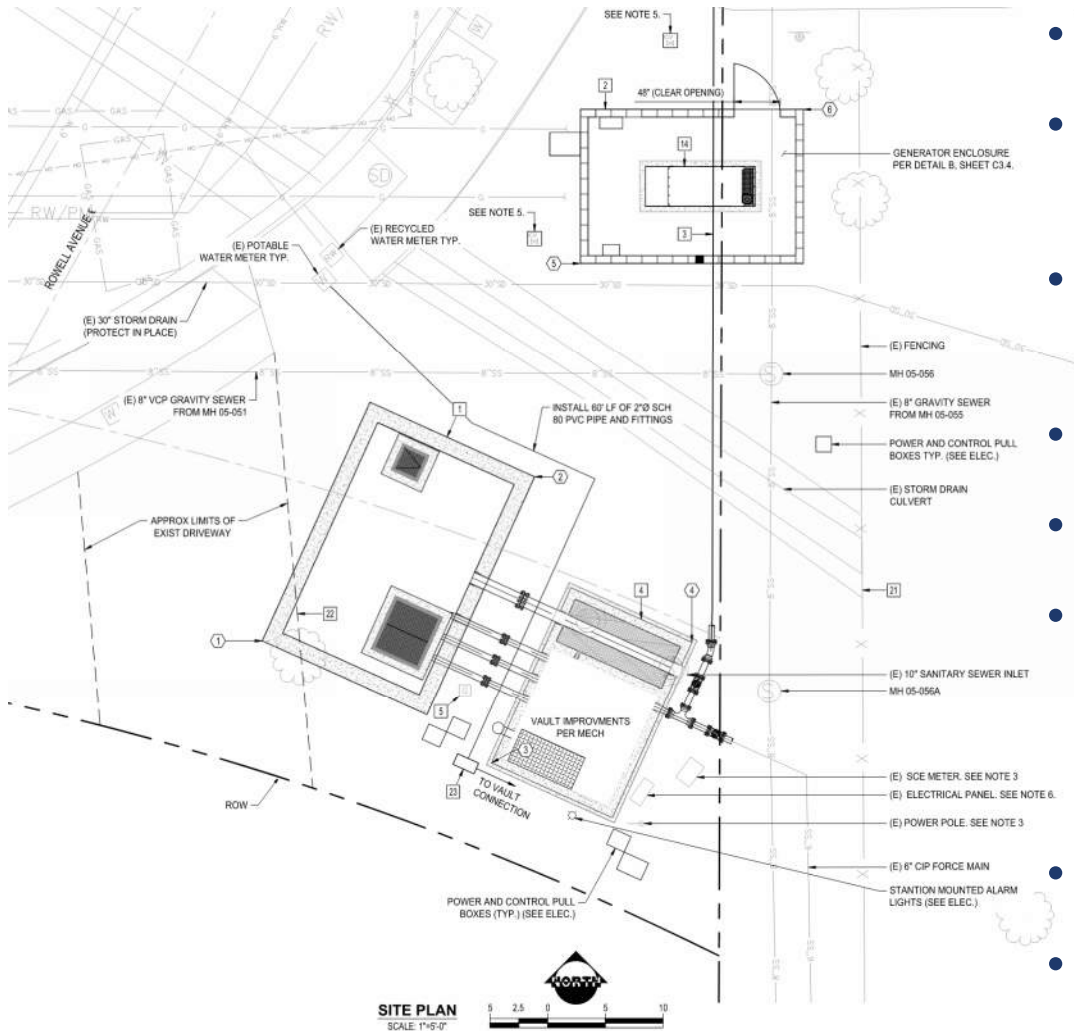
Existing - Location



Proposed - Location



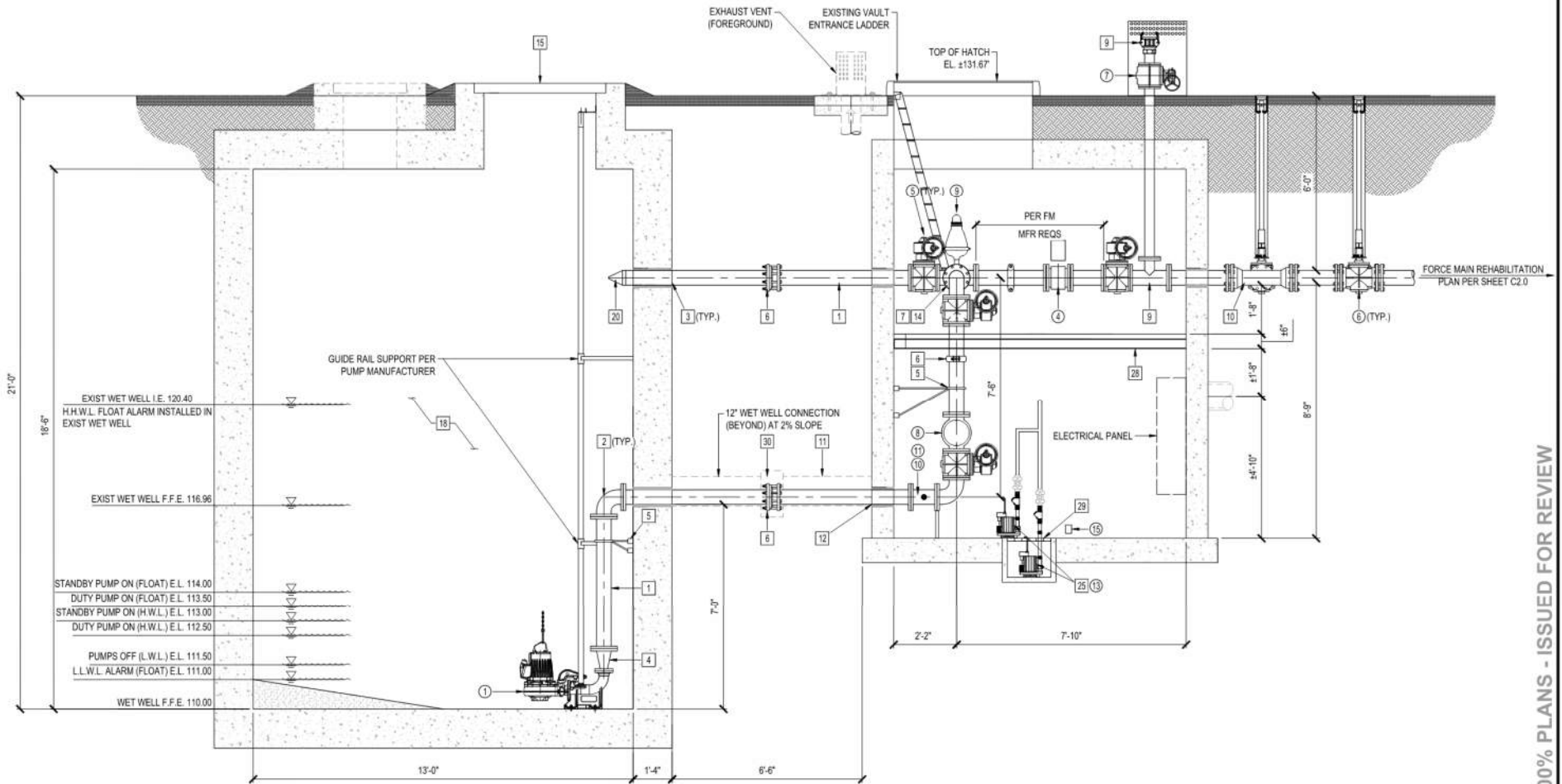
Proposed – Scope of Work Plan View



- New Edison Feed
- New above-ground CMU enclosed standby generator
- New larger wet well
 - (>30 minutes emergency storage)
- New submersible pumps
- New 6-inch force main
- Rehab of existing dry vault pit
 - Piping, valves, ventilation system, equipment control & alarm system.
- Slip-line of existing force main
- New landscape



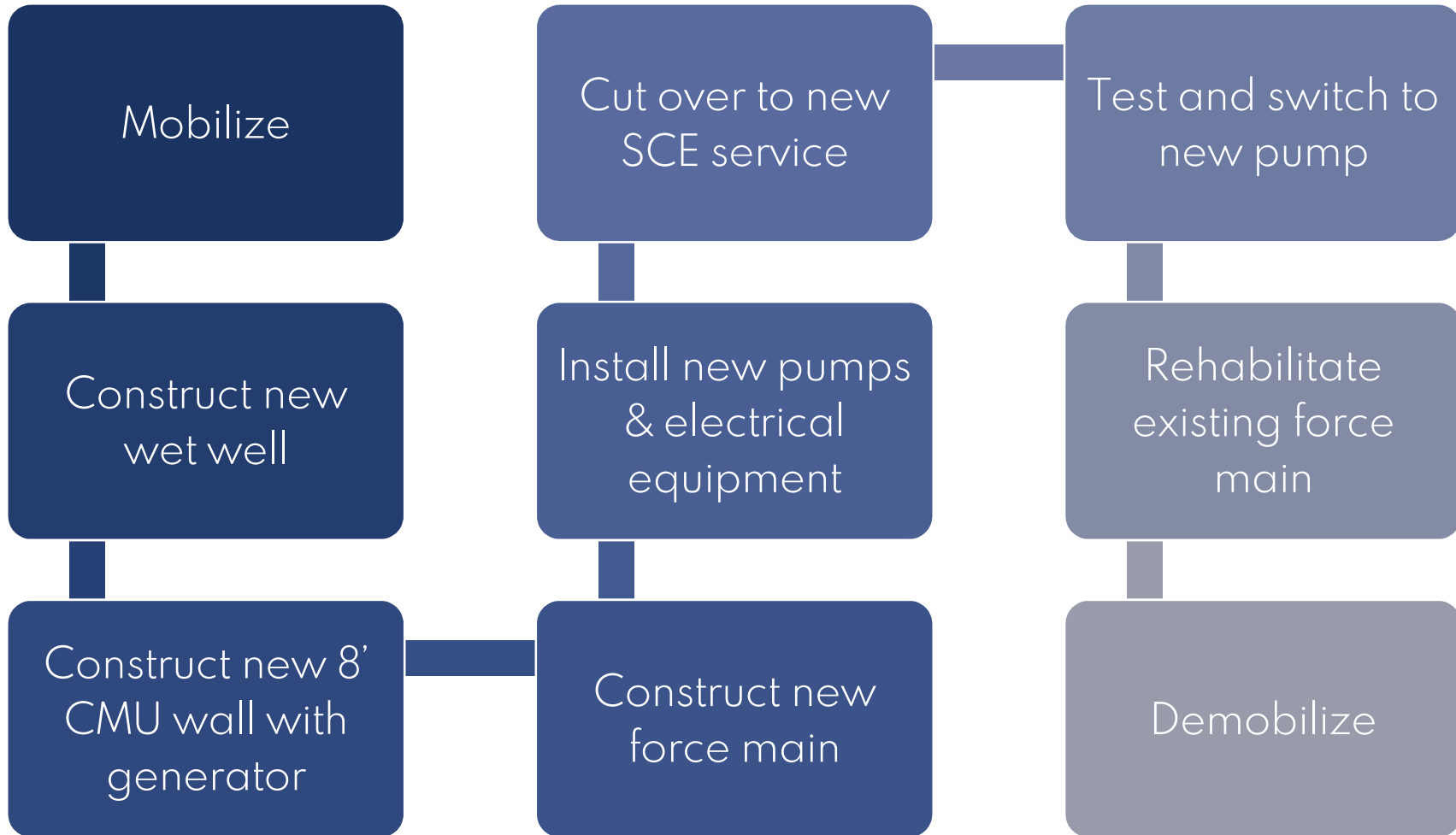
Proposed – Sewer Lift Station Section View



100% PLANS - ISSUED FOR REVIEW



Preliminary Construction Sequence



Potential Impacts & Mitigations

- Construction Noise
 - Excavators
 - Dump trucks
 - Hoist / Crane
 - Compactor
 - Other typical construction vehicles / equipment
- Mitigations
 - Follow ROW permit and allowed construction hours.



Potential Impacts & Mitigations

- Traffic Related
 - No Parking Signage
 - Driveway Access
 - Traffic Pattern Modifications
- Mitigations
 - Follow ROW permit allowed traffic modification hours.
- Potential Mitigations
 - Portion of construction outside the site (i.e. street) may take place in summer.
 - New force main installation.
 - Existing force main slip-lining.



Potential Impacts & Mitigations

- Removal of interfering shrubs and/or trees
- Mitigations
 - Kept electrical panels in existing dry vault.
- Potential Mitigations
 - Plant new trees
 - New landscape



Proposed Upgrades – Preliminary Schedule



Questions and Answers



Questions? Contact... Marzena Laskowska

E: mlaskowska@manhattanbeach.gov

O: (310) 802-5325



CITY OF
MANHATTAN BEACH

VOORHEES AVENUE SEWER LIFT STATION IMPROVEMENTS PROJECT
MARCH 28, 2024

12

Note: This PowerPoint presentation is intended solely as a visual aid to an oral staff presentation of an agenda report topic. In the event of any differences between the presentation and the agenda report, the information in the agenda report prevails.