

LONG-TERM OUTDOOR DINING PROGRAM DEVELOPMENT STATUS UPDATE

APRIL 16, 2024



BACKGROUND

- Feb. 2024: City Council 2nd status update report
 - Community outreach efforts
 - Preferred program vision (Conceptual Plan)
 - Sidewalk widening
 - Parking reconfiguration
 - Outdoor dining and public flex space identification
 - Potential contract amendment with MIG
 - To development Preliminary Plans
- >> **Council Direction:**
- Report back with ROM estimates on implementation



ROM ESTIMATE

- Based on Conceptual Plans of 6 street segments in Downtown and North Manhattan Beach
- Assumptions:
 - Sidewalk widening will occur in front of Eating and Drinking Establishments only, as indicated on the Conceptual Plans
 - Blue sidewalk tiles will be eliminated from each block that is modified as part of the Outdoor Dining plan implementation



ROM ESTIMATE

- Potential range of total project cost:
\$7.5 - \$12.5 Million (per AACEI Guidelines)

Includes, but not limited to,

- Removal of parking meters
- Existing trees to be protected/re-planted
- Additional street lighting
- ADA-compliant pedestrian access
- Necessary retaining walls and railing along sloped portion of Manhattan Beach Blvd.



ROM ESTIMATE

- Potential funding sources:
 - Construction:
 - Certificates of Participation (COP)
 - Grant funding opportunities
 - Cost Recovery:
 - Impose outdoor dining permit fees
 - Increase parking meter fees
 - Increase parking citation fines
 - Explore ballot measures (e.g., local sales tax measure)



MIG CONTRACT AMENDMENT

- Additional Scope: Preliminary Design

- Purpose:

- Assess feasibility of the conceptual plan and prepare for construction documentation

- >> Enables City to proceed with regulatory process of establishing an outdoor dining ordinance

- Amendment Amount

- Original PSA: \$400,000 → \$491,726.33



TASK FORCE RECOMMENDATIONS

Live Outdoor Entertainment and Amplified Music

- Allow both with permits on public and private property from 9 a.m. to 10 p.m.

However,

- Restrict live outdoor entertainment in public right-of-way to special events only w/o further encroachment
- Prohibit both activities on second floor dining areas that are not fully enclosed; no exceptions for permits
- Place speakers on private property
- Set quantitative noise level standards for enforcement



STAFF RECOMMENDATION

Noise-related Enforcement

- Based on field observation and experience, do NOT recommend quantitative noise level standards
 - Multiple external factors affect how noise levels are perceived versus how they are measured
 - Not currently equipped with necessary sound level meters and training/certified officers
- Will continue to use “reasonable person test”

Alternative recommendation: Continue to prohibit live outdoor entertainment and amplified music in public outdoor dining areas; allow exception with permit (Title 5)



TASK FORCE RECOMMENDATIONS

Enforcement of Outdoor Dining Regulations

- Revoke outdoor dining permit on 4th enforcement action for repeat violators and prohibit reapplying for one-year



1 st Violation	Notice of Violation
2 nd Violation	Administrative Citation No. 1
3 rd Violation	Administrative Citation No. 2
4 th Violation	Administrative Citation No. 3 >> Permit revoked

- Future staffing options for better enforcement after hours:
 - Consider new part-time staff for active patrol; or
 - Authorize overtime of existing staff (complaint-based)



DIRECTION ITEMS

1. Potential amendment to MIG's PSA to develop preliminary plans (Additional \$91,726.33)

2. Task force-recommendations:
 - a) live outdoor entertainment and amplified music in outdoor dining areas
 - b) code enforcement mechanism for outdoor dining permits



LONG-TERM OUTDOOR DINING PROGRAM DEVELOPMENT STATUS UPDATE

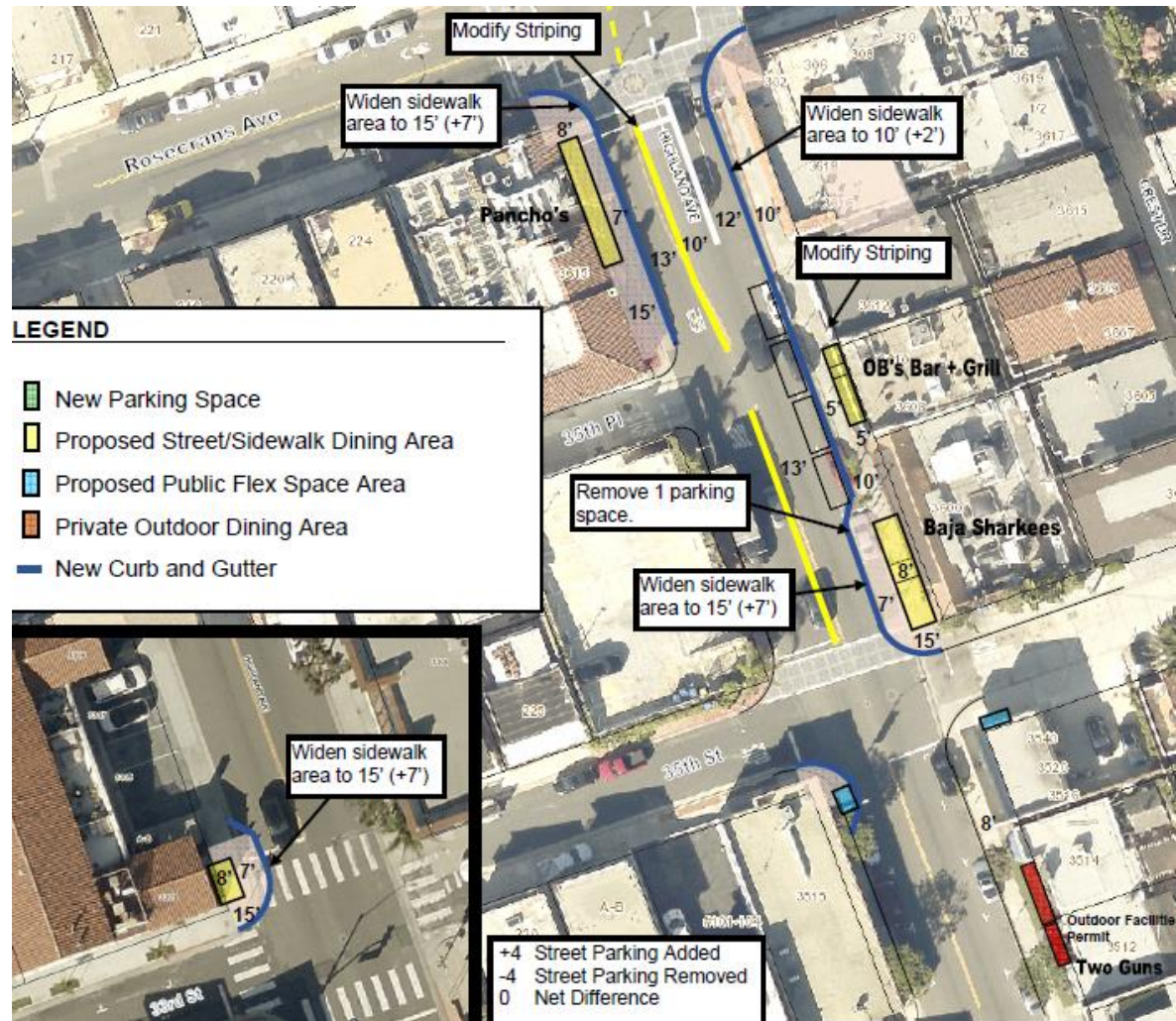
APRIL 16, 2024



CONCEPTUAL PLAN

North MB Highland Avenue 2

Net Parking
Count: 0



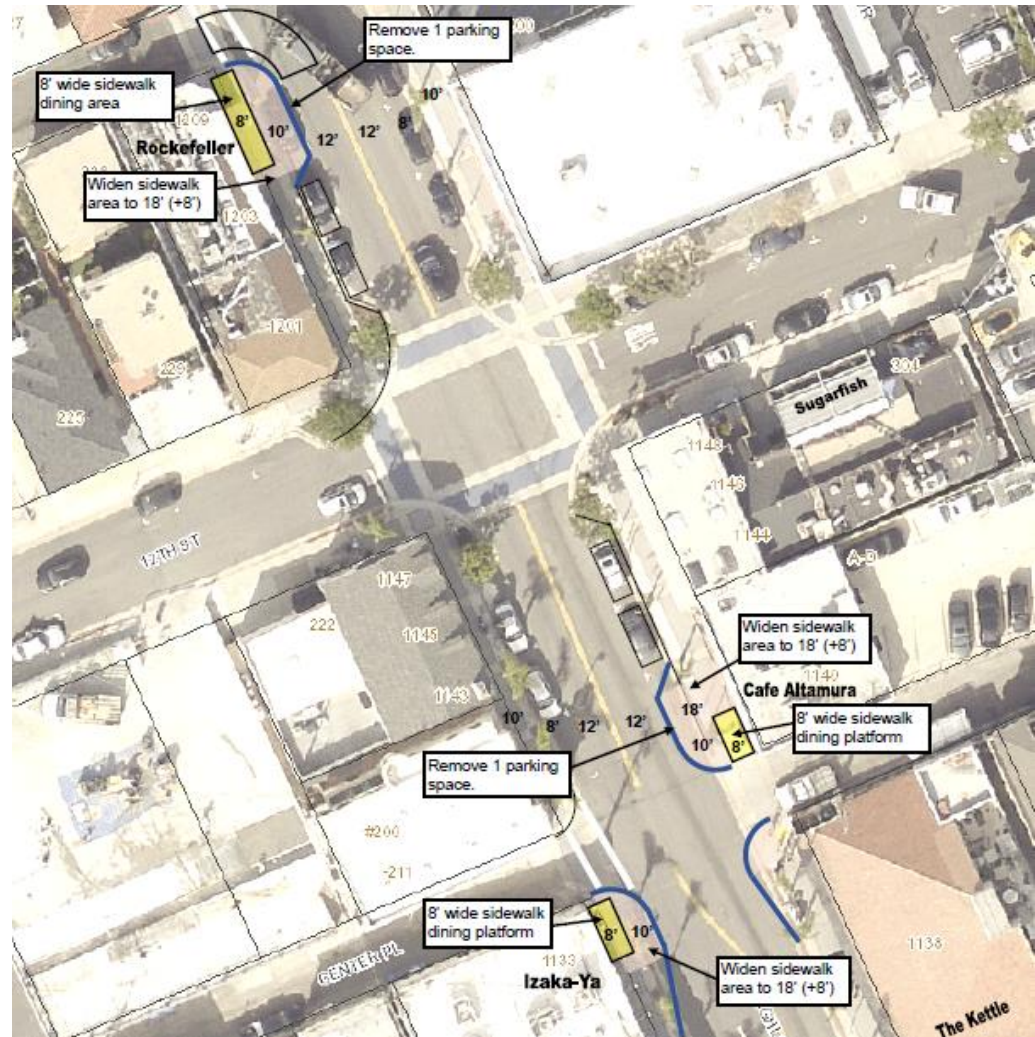
CONCEPTUAL PLAN

Highland Avenue

Net Parking Count: -2

LEGEND

-  New Parking Space
-  Proposed Street/Sidewalk Dining Area
-  Proposed Public Flex Space Area
-  Private Outdoor Dining Area
-  New Curb and Gutter



CONCEPTUAL PLAN

Manhattan

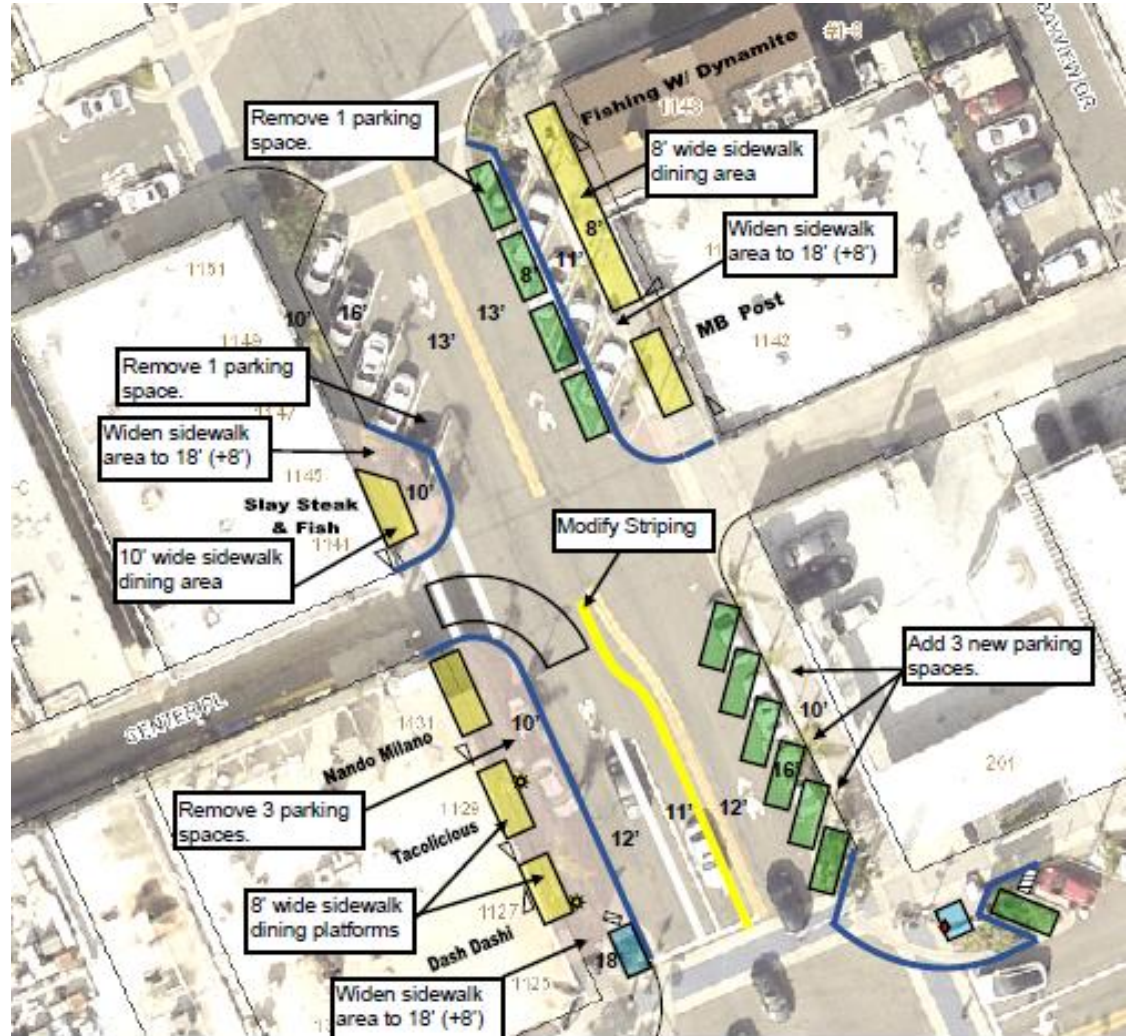
Avenue

- North

Net Parking
Count: -2

LEGEND

-  New Parking Space
-  Proposed Street/Sidewalk Dining Area
-  Proposed Public Flex Space Area
-  Private Outdoor Dining Area
-  New Curb and Gutter



CITY OF
MANHATTAN BEACH


LONG-TERM OUTDOOR DINING PROGRAM DEVELOPMENT STATUS UPDATE REPORT
APRIL 16, 2024

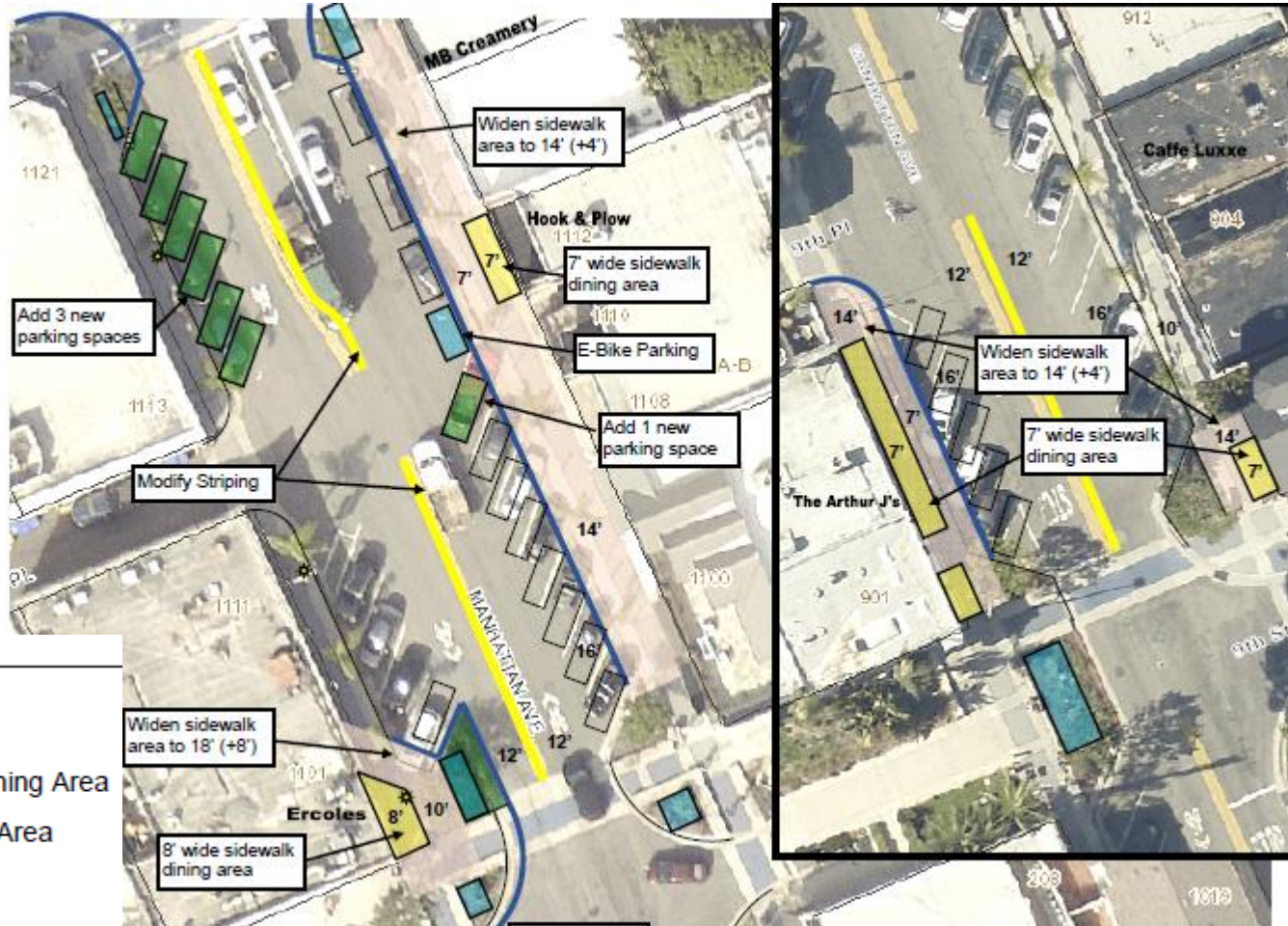
CONCEPTUAL PLAN

Manhattan Avenue - South 1

Net Parking
Count: +6

LEGEND

-  New Parking Space
-  Proposed Street/Sidewalk Dining Area
-  Proposed Public Flex Space Area
-  Private Outdoor Dining Area
-  New Curb and Gutter



CONCEPTUAL PLAN

Manhattan Beach Boulevard - East

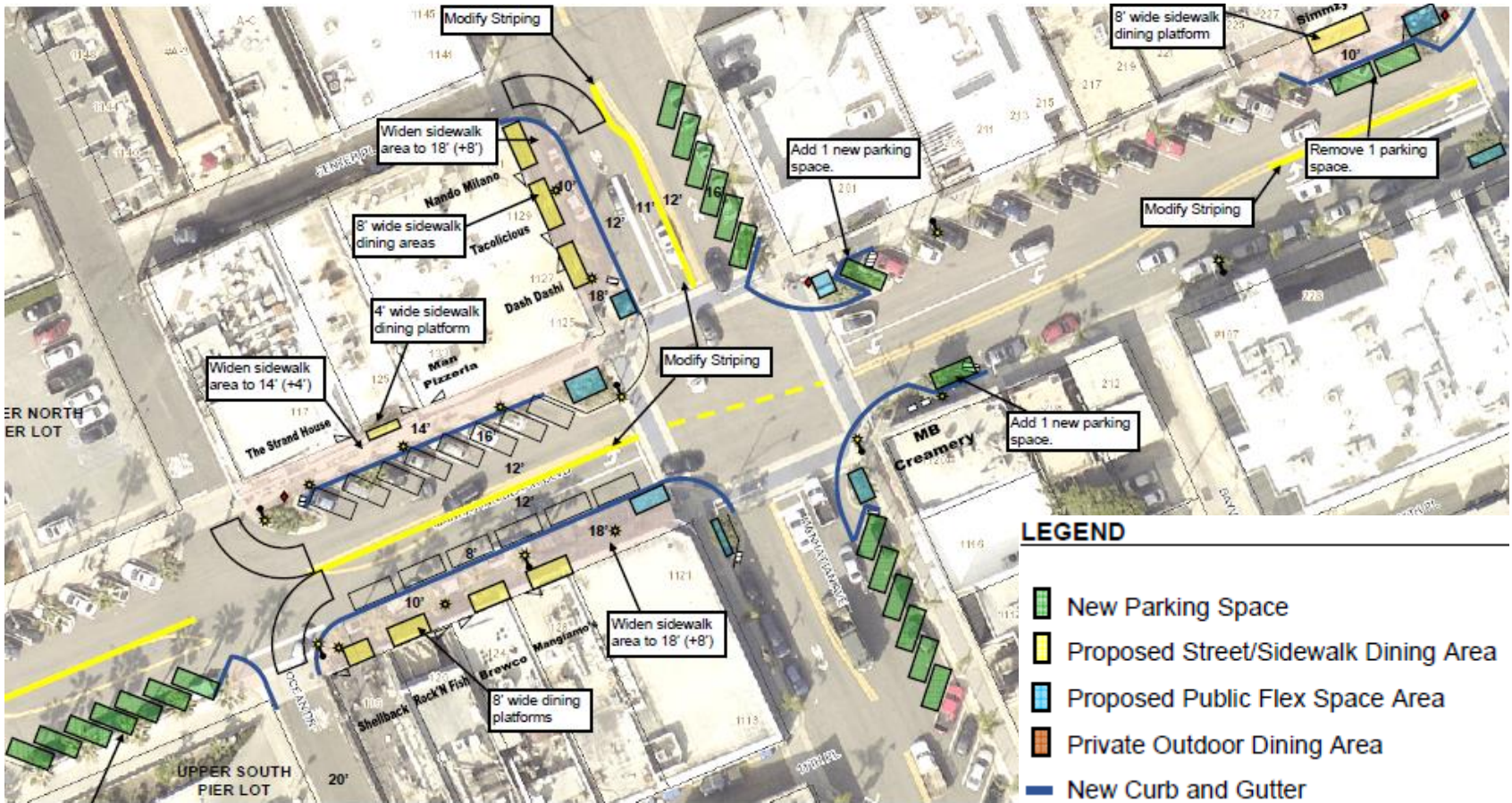


Net
Parking
Count:
-4



CONCEPTUAL PLAN

Manhattan Beach Boulevard – West (Option 1)



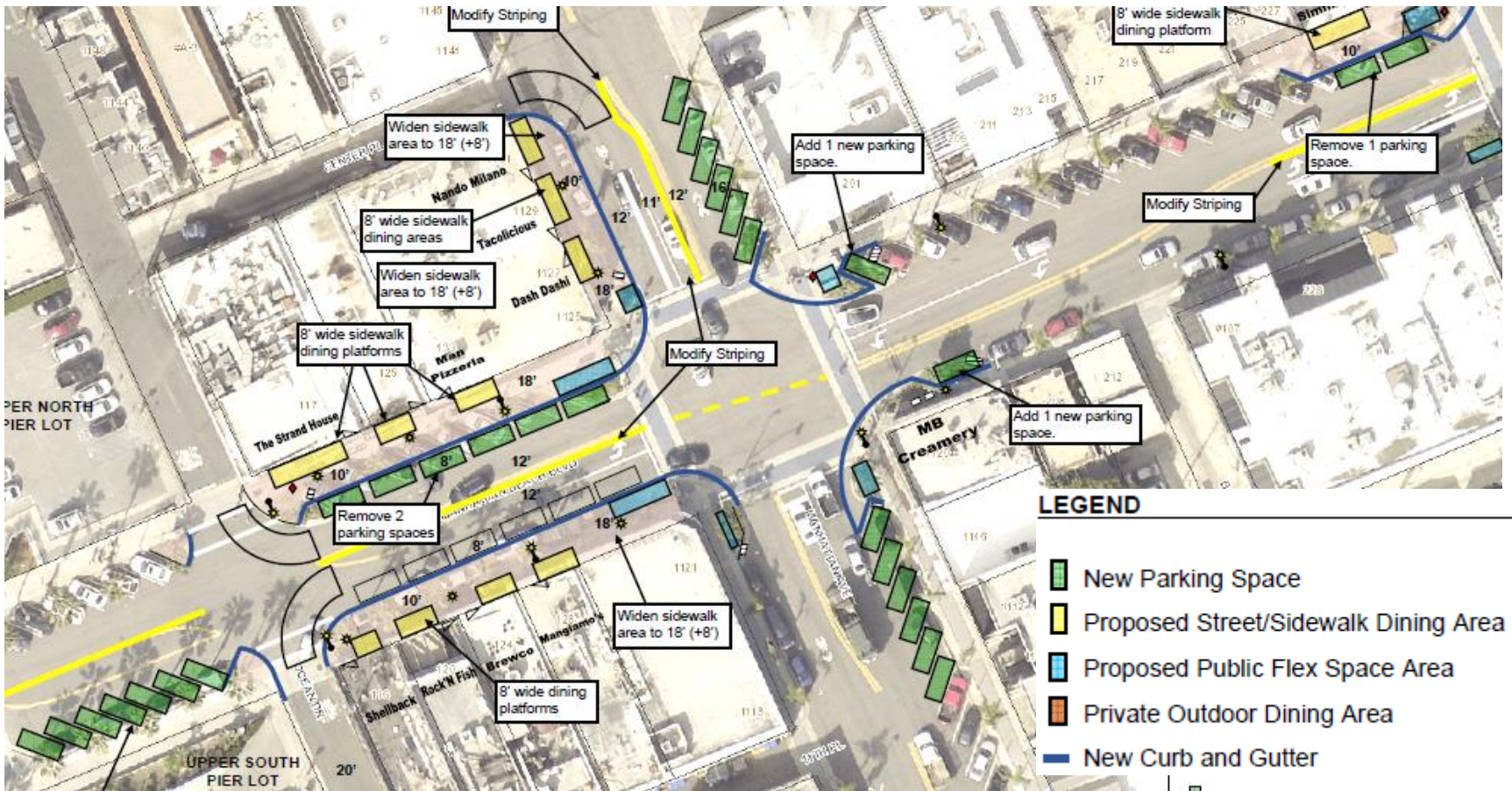
CITY OF
MANHATTAN BEACH

LONG-TERM OUTDOOR DINING PROGRAM DEVELOPMENT STATUS UPDATE REPORT
APRIL 16, 2024

Net Parking
Count: +4

CONCEPTUAL PLAN

Manhattan Beach Boulevard – West (Option 2)

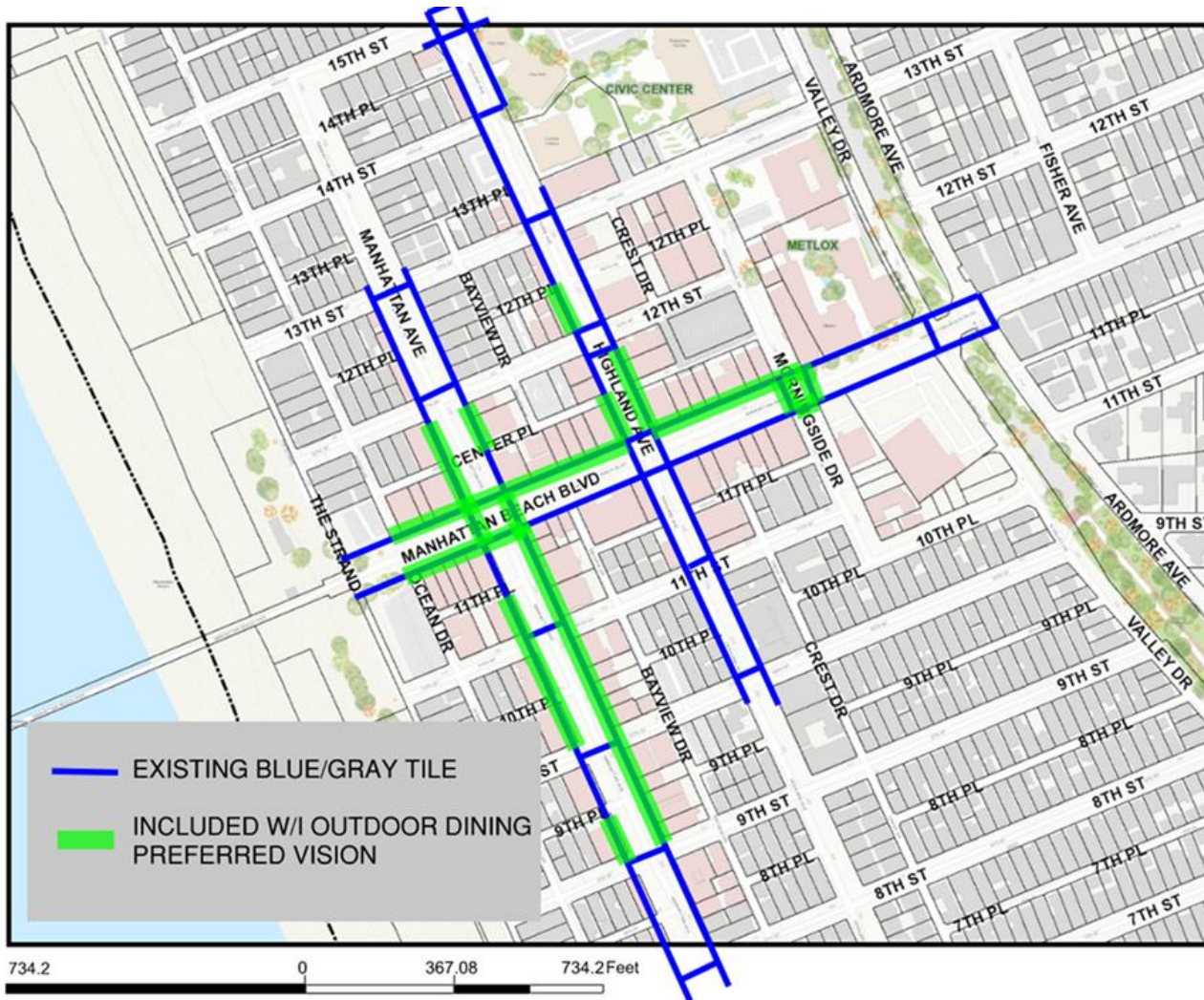


LEGEND

- New Parking Space
- Proposed Street/Sidewalk Dining Area
- Proposed Public Flex Space Area
- Private Outdoor Dining Area
- New Curb and Gutter

Note: This PowerPoint presentation is intended solely as a visual aid to an oral staff presentation of an agenda report topic. In the event of any differences between the presentation and the agenda report, the information in the agenda report prevails.

CONCEPTUAL PLAN



PREFERRED PROGRAM VISION

Manhattan Beach Blvd. Example

